



**THE**  
*Cresset*

September 2015



News, views and what's on, in and around Bottisham



**EADONSTONE**  
KITCHENS • STONE • CERAMICS

## Beautiful new showroom

Now Open

Eadonstone Limited launched their brand new  
showroom on Friday 26th September

Our showroom features premium quality kitchens by Charles Yorke and Mereway  
Kitchens, as well as an extensive range of quality stone and ceramics.

Order a Charles Yorke kitchen and have Alex Rushmer of 'The Hole in the Wall'  
host a dinner party in your new kitchen!

The Stone Yard, Whitelands Farm, Newmarket Road, Bottisham, Cambridge CB25 9BD

T: +44(0) 1223 811 111 • E: sales@eadonstone.co.uk • www.eadonstone.co.uk

MerewayKitchens®



**EADONSTONE**  
KITCHENS • STONE • CERAMICS

### Welcome back dear reader!

Well, that was a nice break. I had forgotten what it was like not to have the regular 'Cresset' clock ticking. However, at the same time, I felt as if something was missing. I emailed all our regular contributors to let them know that there would not be a magazine in August, and I was delighted that everyone took the opportunity to take the break.



I am also delighted that they have all remembered how valuable their contributions are, and we have a goodly bunch of articles back this month as usual.

September is always the time when the delights of summer can still make us think that the warm weather is set to last and sometimes we are rewarded with a couple of months of Indian summer. However given the vagaries of this summer, it may be that we are still hoping for a glimpse of the summer we had hoped for. Mind you, as I write, August is not too bad.

Is it just me, or were the summers of our childhood always hot and sunny? Here speaks a child born and brought up in the West of Scotland, not renowned for tropical weather! I sometimes think our memories play cruel tricks on us.

Some that know say that we need to get used to milder and wetter summers, and milder and wetter winters. Others say that we can expect more extremes of weather with freezing winters and dry arid summers. Conflicting experts! For me, I think it simply means more weather!

Village matters now and it is sad to record the passing of Tony Newman a couple of weeks ago. Tony was a prominent and involved 'Bottsamite'. His family's history of farming in Bottisham and involvement with the village goes back for generations, indeed centuries. Tony's involvement was long, both as Councillor, Church warden and involved resident. Readers will have seen the detail last month of Tony's connection with the church bells which have recently been refurbished. This month's cover of the refurbished clock face highlights the fact that time does not stand still for any of us. Installed in the 1870's, the Newmans are recorded in the original dedication on the back of the clock. Our thoughts are with Will and the boys who carry on the family farming tradition.

Mike Young' who took the cover photograph while bravely perched on the contractor's 'cherry picker' crane, updates us on more about the refurb' elsewhere in the magazine.

September matters now and after a most enjoyable trip to the Outer Hebrides we are back again and things are getting busy already.

Firstly the Annual Gardening Club Show, where we are all invited to get involved with what we do in our garden, kitchen and hobby room. If you have a product of your hobby, whether that is in the garden or elsewhere, share your enjoyment with the rest of us. You may feel that "I am not good enough", but you should know that what you think is only good enough for your eyes would give delight to others and surpass your expectations. And we are not talking about Chelsea flower show here. If you don't win first prize, it's not the end of the world. Given the proliferation of classes and the 1st/2nd/3rd/commended prizes to win, it is likely that there will be something there for your efforts!



Finally, Alicia Hatley sent me a lovely picture to prove that everybody loves the Cresset! Bessie is obviously happy to have been re-homed from Cambridge Cats protection with her mother Blossom.

*Enjoy your month.*

*PW*

## David Simmons

David Simmons passed away peacefully on 7th Aug, aged 82. A funeral will take place at Cambridge crematorium Wed 2nd Sept 11.30 followed by a reception at Madingley Hall, Madingley, Cambridge to celebrate his life. Donations to the RNLI or UCL Amyloidosis research fund would be preferred to flowers.

David had lived in Bottisham since 1980 and over the years had enjoyed a number village activities including the Bottisham players and village library duty. He will be missed but remembered fondly by his family and friends.

Copy deadline for the next issue is 14 September.

Please send material to the editor at [cresset@bottishampc.org.uk](mailto:cresset@bottishampc.org.uk)

Have you thought of advertising your business in **The Cresset**?  
Email the Editor for details: [cresset@bottishampc.org.uk](mailto:cresset@bottishampc.org.uk)

SUMMIT



# LANDSCAPES

PAVING - DRIVEWAYS - BRICKWORK  
CARPENTRY - GROUNDWORKS





[www.landscapingpaving.co.uk](http://www.landscapingpaving.co.uk)  
PHONE: 01223-929394

## Contents

Holy Trinity Bells .....	5	WEA.....	45
Services @ Holy Trinity Bottisham.....	7	Cambs Fire & Rescue .....	45
TRBL Bottisham & District.....	8	Jolley Old World .....	49
The Royal British Legion Social Club ...	9	Bottisham Medical PPG.....	51
Parish Notes .....	13	Anglesey Abbey & Wicken Fen .....	53
District Councillor's Report.....	15	Bottisham Comm Library Assoc.....	53
Bottisham Carpet Bowls Club .....	17	Bottisham/Burwell Photo Club .....	57
Gardening Club Annual Show Entry ...	33	Bottisham WI .....	59
BAMG.....	34	Public Transport Matters.....	60
RE:NEW .....	35	Bottisham/District Gardening Club .....	61
Bottisham Players .....	37	Cambridgeshire Police .....	63
Sales, Wants and Swaps .....	41	Useful Information.....	68
Thoughts of a Sports Nut.....	43		



# J&J DRAKE



**Fully approved electrical contractor**

- All Work Certificated in Accordance with NICEIC
- Free no obligation quotations
- All aspects of electrical work undertaken such as re-wires, Periodic test and inspections, maintenance calls, New build Installations.
- However small you may consider your job it will be treated with the same attention to detail as every one of our jobs.

## Your Local Electrician

Unit 24, Hall Barn Road Industrial Estate, Isleham, Ely, Cambs. CB7 5RJ  
Contact us on: 01638 781567 / [enquiries@jandjdrake.co.uk](mailto:enquiries@jandjdrake.co.uk)

# HARRISONS OF BURWELL LTD

(Previously N. E. & S. Harrison)

## Plumbing and Heating

**FREE ESTIMATES GIVEN**

Gas Boiler Servicing

Clarence House, 7 Ness Road, Burwell, Cambs CB5 0AA  
Telephone: Newmarket 01638 742873 - Mobile 07932 773515

e-mail: [nigel.harrison@ntlworld.com](mailto:nigel.harrison@ntlworld.com)

C.O.R.G.I. Registered

Marshall's Award Winning Driveway Installer

### Our areas of expertise include:

- Driveways and Paving
- Patios and Paths
- Fencing, Trellis Work and Decking
- Turfing and Seeding
- All Building work and Property Maintenance



Office: 01638 721893 or Site: 07789261266

[www.amsbuildingandlandscaping.co.uk](http://www.amsbuildingandlandscaping.co.uk)

We are fully insured and work to the highest standards.



## k-domestic electrical solutions

Complete installations & rewires  
Small and large alterations  
Lighting  
Internal & External work  
PAT Testing  
Periodic Inspection & Reports  
Full Inspection, Testing,  
Verification & Certificate Issue  
LED  
Under Floor Heating  
Voltage Optimisation

your local electrical service of choice and recommendation

**Karl Howe**

**01638 610438 M: 07541 008613**

Email: [enquire@k-elec-solutions.com](mailto:enquire@k-elec-solutions.com) Website: [www.k-elec-solutions.com](http://www.k-elec-solutions.com)

Fully qualified Part P and 17th Edition

City &  
Guilds  
Qualified



## Holy Trinity Bells

### The inner and outer of the tower of Holy Trinity - Bells and clock faces

'The best laid schemes o' mice an' men, gang aft agley' wrote Robert Burns. Go awry they do. The bell that featured on the cover of the last issue of Cresset bearing the name of Tony Newman was due to be returned to us on 24th August and when this paragraph was originally penned we had hoped to have a service of celebration and re-dedication of the bells on 6th September. Sadly, it was the Memorial Service for Tony himself that took place on 24 August. The sad passing of a well respected man. This then, has had a knock-on effect on the return and re-hanging of the bells and the special Songs of Praise service will now be held at 6 pm on Sunday 11 October. Happily we shall not be left, like Burns's mouse, with 'nought but grief and pain' (see below).

In contrast to the long drawn out project to restore the bells, a rather more speedy and instantly dramatic refurbishment has occurred on the outside of the tower of Holy Trinity, although it too had a gestation period. A number have commented on how dull, dirty and shabby the two clock faces had become - difficult to remember when you look at them now (cover photo). They have been repainted, as they were the last time, in memory of Peter Green, who died in the crash of the Turkish Airlines Boeing 747 near Paris in March 1974. We are most grateful for generous support from donors towards the cost. The colour scheme, blue with the numerals in gold-leaf, is traditional and I am grateful to Steve Allen for going into the history to establish the exact shade of blue to use and making me aware of the edict of Henry VII that clock faces on churches should be 'blew with the signs upon them gilt'. There is a suggestion that this colour scheme derives from the description in chapter 39 of the Book of Exodus of the cloak to be worn by Aaron, the first Jewish High Priest: 'entirely of blue cloth ....bells of pure gold ..round the hem'. An alternative explanation is that in the middle ages artists had no simple way of producing a strong blue colour; the only vivid blue came with the use of lapis lazuli, largely from Afghanistan, which was both rare and expensive. Hence, in this period this blue was only used for objects of special value or importance. Irrespective of its historical origins, the combination of blue and gilt still looks stunning. Curiously, the clock faces, presumably contemporary with the clock mechanism, i.e. 1870, originally had a 'black ground, with gold figures and rims', to quote the Trustees Report on completion. Does anyone remember when the colour scheme changed?

Producing the finished job was rather more difficult than may be obvious, since the numerals are not raised above the surface of the disk. This made applying the gold-leaf much more difficult and even more so when it had to be done 13.3 metres up on the arm of a lorry-mounted extending platform in a breeze. The faces are simply nailed to the tower wall, so removing them without causing significant damage would have been a nightmare. We were also surprised when it turned out that the numerals on the west face had been gold paint, whereas those on the south face were gold-leaf. The most likely explanation is that the south face was removed when the walls of the tower was repaired in 1980 and then repainted and gilded at ground level, whereas, as can be seen in the photograph on the cover, the west clock face is still wholly on the original clunch (just) and would probably have been left *in situ*. At least we were blessed with a week of dry weather for the repainting and a splendid result. And by the time this appears the clock may even be showing the right time.

There is a plaque on the clock bearing the names of the Trustees of Clock Fund, including that of the then Churchwarden, Edward Newman, one of a long line of Newmans who filled that office from the late 18th century. With the passing of Tony Newman an era has come to an end. Tony served the church and the village over many years. Others will have their particular memories, but I think of the dark years in the early 1980s, *Holy Trinity Bells continued on page 7.*)



**Body Image • Beauty • Tanning • Gifts**

**We are a well-established  
Beauty & Tanning Salon  
Incorporating a Gift Shop**

Beauty Vouchers  
Starting from £5

**SALON & GIFT SHOP OPENING HOURS**  
 MON, WED & THU 10am - 7pm  
 TUE & FRI 10am - 6pm  
 SAT 10am - 2pm

www.bodyimage-cambridge.co.uk

**T: 01223 880 881** 10A High St, Fulbourn, Cambridge CB21 5DH



**ANDY'S**  
 MEN'S HAIR DESIGN  
 LONGMEADOW

55 LONGMEADOW • LODE • CB25 9HA  
 (opposite phone box)

*Appointments*  
**01223 812444**

  
 The Hairdressing Council  
 State Registered Hairdresser  
 Master Craftsman

**EASY PARKING**

**L BOTTISHAM**  
**SCHOOL OF MOTORING**  
 Tel: 811556

*All qualified instructors  
 with extremely high  
 1st time pass rates*

**Holy Trinity Bells continued.)**

when the congregation of Holy Trinity fitted easily into the chancel and met there for services. Tony had rigged up an industrial-grade piece of plastic sheeting to separate the chancel from the nave. It came complete, high up, with a very clear footprint of a farmyard boot; Tony's mark. He left his mark on Holy Trinity in less obvious ways with years of loyal and devoted service; an example which is difficult to live up to. We mourn his passing, but give heartfelt thanks for his life. *Tony Newman, 1924 - 2015, Rest in Peace.*

*Mike Young*

**Services in Holy Trinity Bottisham in September**

- Wednesday 2nd 8 pm Compline by Candlelight** *Led by Dr Sarah Maxwell*
- Sunday 6th 11 am Morning Prayer** *Dr Sarah Maxwell*
- Sunday 13th 10 am Benefice Communion** *Revd Elizabeth Caswell*
- Sunday 20th 8 am Holy Communion (Book of Common Prayer)**  
*Revd Lawrie Marsh*
- 11 am Holy Communion** *Revd Elizabeth Caswell*
- Sunday 27th No service in Bottisham**
- 10 am Benefice Communion in Lode**

Details of other services in the Anglesey Group of Churches (The Benefice) are on the notice board in the church.

**Copy deadline for the next issue is 14th September.**

*Please send material to the editor at [cresset@bottishampc.org.uk](mailto:cresset@bottishampc.org.uk)*

**ART CLUB**  
 Bottisham Community Library

**FOR RECEPTION +**

Saturday mornings

10:15 to 11:15

£15 per term

For more info  
 please contact:

Liz 811692 or

[BottishamArtClub@yahoo.co.uk](mailto:BottishamArtClub@yahoo.co.uk)



**PET TIME**

[www.pettime-petcare.co.uk](http://www.pettime-petcare.co.uk)

- Cat, dog and small animal feeding visits
- Dog walking
- Dog and small animal home boarding
- Doggy day-care (crèche)
- House and pet sitting
- Pet taxi

Contact us:

07595 997206

01223 813494 (Swaffham Bulbeck)

[info@pettime-petcare.co.uk](mailto:info@pettime-petcare.co.uk)

All animals from hamsters to horses cared for just as you would want.  
 Fully insured, first aid trained and police-checked.

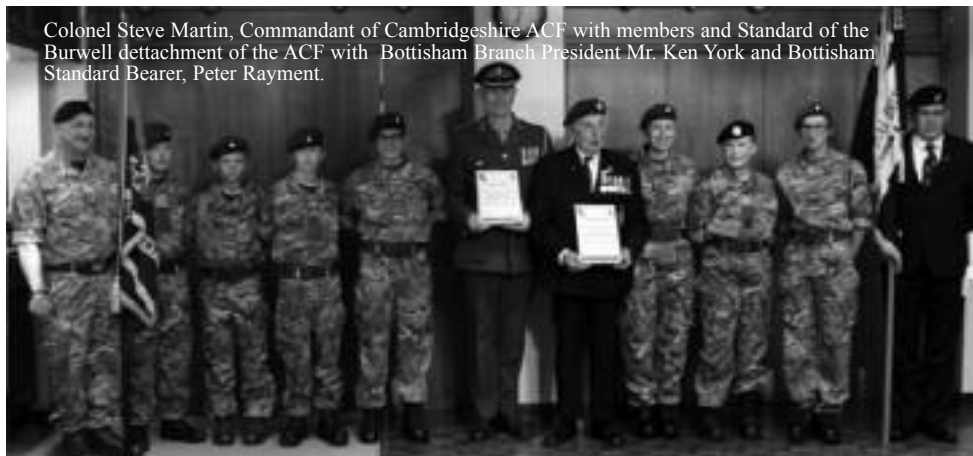
## ***TRBL Bottisham & District Branch***

On Sunday 28th June, Bottisham & District Branch of The Royal British Legion held their Armed Forces Day Service at Holy Trinity Church. A good turnout for the service witnessed 8 Standards including Cambridge County Standard and 3 Branch Standards, together with Standards from the Cambridgeshire Army Cadet Force.

After the service a reception was held at The Legion Social Club, where a warm welcome was made for guests and members of the Burwell detachment of the Cambridgeshire ACF.

Following much work done by Branch member Trevor Cox, who is a Major in the Cambridgeshire ACF, Certificates of Youth affiliation were exchanged between Bottisham & District Branch of the Royal British Legion and the Burwell detachment of the Army Cadet Force. It is hoped that this should bring a more youthful interest to the activities of Bottisham Branch in the future.

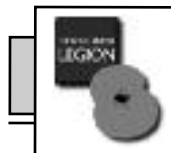
Colin Elsdon DL, TRBL Cambridgeshire County President and Cambridgeshire DL, together with Colonel Steve Martin who is the Commandant of Cambridgeshire ACF, presented affiliation medals to the members of the Burwell detachment of Cambridgeshire ACF.



Colonel Steve Martin, Commandant of Cambridgeshire ACF with members and Standard of the Burwell detachment of the ACF with Bottisham Branch President Mr. Ken York and Bottisham Standard Bearer, Peter Rayment.



County President Colin Elsdon DL inspecting the Standards of the Royal British Legion and the Banners of the Cambridgeshire ACF at Holy Trinity Church in Bottisham. AFD service 28th June.



## ***The Royal British Legion Social Club***

### **WHAT'S ON THIS MONTH AT THE LEGION SOCIAL CLUB**

Line Dancing every Tuesday and Wednesday  
(except the first Wednesday in the month.)

Bingo every 1st and 3rd Sunday

OPENING TIMES

Mon-Thurs 5-11pm : Fri 5-12pm : Sat-11.45-12pm : Sun 12.-11pm  
(Sunday may close at 10pm with the discretion of the staff on duty)  
Live premier league games & Sky sports are shown at the club

----  
7th ANNUAL BEER FESTIVAL

Friday 18th September to Friday 25th September

with a wide range of Guest Ales and cider

Musical Entertainment & BBQ on Saturday 19th September.

----  
Coming up..... Saturday 31st October 4pm 'till 8pm

Halloween Disco for all the family.

Entry £2 per Adult & £1 per Child

Fancy Dress Competition with Prize for the Best Dressed Boy, Girl and Adult.

----  
NOVEMBER IS POPPY APPEAL MONTH!

Saturday 7th – 8 'till Late - Live Music with Re Trio.

Entry £2 per with all monies to the Poppy Appeal.

----  
Saturday 14th - Race Night with the first Race at 8pm.

All proceeds to the Poppy Appeal.

----  
Saturday 21st - The Poppy Appeal Meal.

6.30pm for Dinner at 7pm. Live Music from The Kings of Swing.

Tickets £20 each must be purchased from The Club before 18th November.

----  
Further Dates For Your Diary – watch this space

Sunday 6th December is "Tacky Dangle Day"

24th December - Christmas Eve Disco 8 'till Late. Free Entry.

----  
Don't Forget The Regular Activities For You To Join In And Enjoy  
Darts / Pool / Snooker / Billiards / Cribbage / Dominoes / Bar billiards  
Also

Hall and Poppy Lounge room hire available for all your functions

**The Royal British Legion, Bottisham & District Branch,**  
31 Downing Close, Bottisham, Cambridge CB25 9BA  
Tel. 01223 812063 [www.britishlegion.org.uk/branches/bottisham](http://www.britishlegion.org.uk/branches/bottisham)





# The Carpenters Arms

Brew Pub & Restaurant Great Wilbraham



Cambridge District Local  
Pub of the Year 2014




- *Cosy bar - enjoy a pint, a chat, & good value bar meals*
- *All food cooked on the premises from locally sourced ingredients*
- *French influenced evening dining*
- *Sunday roast menu*
- *Our own beer brewed in our own on-site micro brewery*

For more information, sample menus, prices and opening times :  
 Website: [www.carpentersarmsgastropub.co.uk](http://www.carpentersarmsgastropub.co.uk) ☎ 01223 882093  
 The Carpenters Arms, 10 High Street, Great Wilbraham, CB21 5JD



# Ristorante Il Piccolo Mondo

Telephone 01223 811434 for reservations

85 High Street Bottisham Cambridge CB25 9BA  
 OPENING TIMES  
 MONDAYS & TUESDAYS - CLOSED  
 WEDNESDAYS / THURSDAYS / FRIDAYS / SATURDAYS  
 12.00- 2.30pm & 6.30- 9.30pm  
 SUNDAYS 12- 2.30pm



# THE WHITE SWAN

AT QUY

MODERN BRITISH FOOD IS BACK ON THE MENU  
 (NOT TO MENTION THE GREAT LOCAL BEER,  
 EXCELLENT WINE AND GOOD COMPANY)

OPEN DAILY FROM 12:00  
 (FOOD SERVICE FROM 12:00-3:00PM AND 6:00PM TO 9:00PM)

- ❖ SEASONAL BAR MENU
- ❖ FULL RESTAURANT MENU
- ❖ WEEKDAY LIGHT BITES
- ❖ FANTASTIC SUNDAY ROASTS
- ❖ CASK CONDITIONED ALES
- ❖ PRIVATE DINING AND FUNCTIONS
- ❖ BOOKING NOW ADVISED FOR SUNDAYS AND RESTAURANT



MAIN STREET, STOW-CUM-QUY,  
 CB25 9AB TEL: 01223 811821  
[WWW.WHITESWANQUY.CO.UK](http://WWW.WHITESWANQUY.CO.UK)  
[INFO@WHITESWANQUY.CO.UK](mailto:INFO@WHITESWANQUY.CO.UK)

# The Six Bells Fulbourn



9 High Street, Fulbourn  
 Telephone 01223 880244

*Home cooked fresh food  
 Open for lunches every day,  
 evening meals Tuesday to Saturday*

*Separate function room  
 catering for weddings, parties and other  
 occasions*

*Resident music - Hugo's Disco*

*Traditional Jazz  
 every first and third Wednesdays with the  
 Riverside Jazz Band*

*Senior Citizens Lunches every Thursday*

*Fresh Fish Night - Thursday  
 Eat in or Take-away*

*Curry Night - Fridays*

*Lindy's Quiz Night - Thursdays  
 Starting at 9.15 pm - Prizes to be won*

*Large selection of real ales  
 Wines from around the world*

## SN Handyman Services

A friendly and reliable service for all your general home and garden maintenance.

- ▶Painting & Decorating (interior/exterior) ▶Garden Maintenance ▶Tiling & Glass Splashbacks ▶Gutters Cleared & Repaired ▶Power Washing Patios ▶Sealant Replacement (bathroom/kitchen) ▶Curtain Poles & Blinds
- ▶Flat Pack Furniture (assembly) ▶Shelf Fitting ▶Small Glazing
- ▶Conservatory Cleaning ▶**and more...**!

**Free estimates & advice given on all work**

References available upon request.

PLEASE CALL

**Steven Newton** ▶07713 859712 ▶01223 813701  
Bay Tree Cottage ▶74 High St ▶Swaffham Bulbeck



Parish Council do not meet in August so I have not much to report until our September meeting as it has been a quiet summer.

At our last meeting in July we co-opted Mr Tony Jolley onto Parish Council, this means we now have our full compliment of 11 councillors. Tony was a parish councillor once before and we welcome him back.

The last electrical recycling collection which was back in May collected almost half of previous collections and generated an income of £89.48. A new date had been set for November but councillors felt we should have it a bit later, after Christmas and this has now been changed to 13th January so if you have the space, please keep any old electrical items until this date. It is a free service and does generate a small income for Parish Council.

The County Council are running a consultation until 21st October on the Draft Rights of Way Improvement Plan in line with the requirements of the Countryside and Rights of Way Act 2000. The Rights of Way Improvement Plan was adopted in 2006 as part of the Cambridgeshire Local Transport Plan 2006-2011. The draft updated plan can be viewed on the County Council's website and comments are invited via email to [transport.plan@cambridgeshire.gov.uk](mailto:transport.plan@cambridgeshire.gov.uk). The draft document will be finalised for publication in November 2015.

The District Council will soon be delivering rolls of 52 black refuse sacks which are intended to last each household for the year. These will be delivered week commencing 7th September. Please contact the District Council if you have not received your sacks by the 14th September. Any claims for non delivery of sacks must be made by the 9th October.

I have been asked to remind people that if they advertise an event please could you make sure you remove the advertising posters afterwards. It looks so untidy and a local resident has been spending a lot of time going round removing offending items from lamp posts around the village. Also on the subject of lamp posts, if you notice that a light is out it is very easy to report this to the County Council and they will come out and repair very quickly. You can either ring on 0800 7838247 or click on 'report a streetlight repair' on the Cambs County Council website.

### PLANNING NOTES

15/00392/FUL 49 Bell Road Porch to front of house APPROVED BY ECDC.

15/00543/OUT Bottisham Police Station, 12 Bell Road Conversion of existing police service building to residential and erection of a pair of semi-detached two storey dwellings NEW APPLICATION

15/00709/FUL 95 High Street Proposed first floor extension and alterations to rear dormer and ancillary works NEW APPLICATION.

15/00840/FUL 83 Ox Meadow Erection of a small single storey extension NEW APPLICATION

**Copy deadline for next issue is 14 September.**

Please send material to the editor at [cresset@bottishampc.org.uk](mailto:cresset@bottishampc.org.uk)

Have you thought of advertising your business in **The Cresset**?  
Email the Editor for details: [cresset@bottishampc.org.uk](mailto:cresset@bottishampc.org.uk)



# DG COMPLETE PROPERTY MAINTENANCE

- CARPENTRY
- PAINTING/DECORATING
- FITTED KITCHENS
- TILING/BATHROOMS
- GLAZING
- PATIOS/PATHS
- FASCIAS/GUTTERING
- DRAINS

[desgoody@gmail.com](mailto:desgoody@gmail.com) Mobile: 07542 757234  
Tel./Fax: 01223 811911



# ANGLIA TREE CARE

**LARGE ENOUGH TO COPE • SMALL ENOUGH TO CARE**

80% OF OUR WORK IS VIA RECOMMENDATIONS  
TREE SURGERY & FELLING • HEDGE MAINTENANCE  
STUMP GRINDING • FULLY QUALIFIED  
FULLY INSURED • 24/7 SERVICE  
All work carried out to BS 3998

Free Estimates Given within 7 days



Tel. 01223 424454 • INFO@ANGLIATREECARE.CO.UK

**M E M B E R**  
Guild of Master Craftsmen

## PETER FISHER

CARPETS - WOODS - VINYL

*(District Councillor's Report continued on page 16.)*



A wide range of floorings supplied and fitted.  
Please call for a free estimate and select in your home.

Tel: (Bottisham) 01223 811321  
Mobile: 07879 494 685

Great service for  
**30** years

## *District Councillor's Report*

The strains and efforts of April/May are truly confined to the bin together with the information overload endured over the immediate aftermath. Subsequently our new Councillors, Campbell & Chaplin are now firmly in a position to launch themselves effectively at all tasks, knowing the overall plan, their various roles in the overall plan, what resource they have available to them, where to find such resource and how best to utilise such support, allowing our elected Ward Councillors to deliver results which reflect the interests of all our constituents.

The message to all Conservative members from Council Leader James Palmer was clear, "No longer can any of us fight a hard, successful election campaign to simply sit back and vote for the policy presented before us, those days are gone. We all, without exception, must be pro-active whilst delivering a sustainable long term service to the council and the people of East Cambridgeshire".

Campbell was hard on this ethos from day one after the election. Prior to thrusting his character to the various positions on the council and Outside Bodies, as promised on the doorstep in May, doors in every Parish have been knocked on as the ongoing campaign to increase the quality of life for Bottisham Ward residents continues. Several constituents have touched base with Campbell with personal issues to be resolved. The success rate throughout the Ward has proved to be high in a fashion which should now be taken as the given template. All constituents who took the opportunity to engage in debate will be pleased that they are indeed not to be abandoned in the days, months and years of this term.

### **Irresponsible Parking**

All residents in Bottisham will be aware of the school/college term daily outdoor madness. This practice involves parents/guardians parking in the most inappropriate fashion whilst attempting to ensure the safety of their children at the end of each educational day. The plain facts are that the very chaos this behaviour creates simply further endangers the well-being of those who we wish not to hear tragic news. In addition to this issue, the residents of Pound Close, Jenyns Close and Arber Close either run the gauntlet attempting to gain access to Lode Road or feel compelled to implement a self-imposed curfew during this period of each educational day. Furthermore, this chaotic behaviour detracts the speed and efficiency of any emergency service who need to access these areas or choose this area of Lode Road to access elsewhere.

Albeit a matter more so for the County Council to be concerned with, Campbell will deal with this issue. Pleas from the School and College to parents seems to have had little effect, therefore Campbell has initiated the assistance of Cambridgeshire Police who have been present on the ground and are willing to continue in the future to resolve this issue of the utmost importance. A meeting of several governing groups will be called in due course on a date suitable to the safety officer of Bottisham Village College. One way or another, this madness will cease. Our Lucy Frazer MP has been most helpful in this matter. County Council will be approached and their assistance will be taken as readily available. Campbell is not here to make friends, but to serve.

### **Amey Cespa Waste Management Plant**

Mark Shelton, Waste Education Manager of the AmeyCespa waste/recycling plant is eager as always to run tours of this site for groups of no less than 6 free of charge. Children are welcome and have a number of recycling activities to make this a worthwhile visit as the parents can be easily convinced to improve *(District Councillor's Report continued on page 16.)*

(District Councillor's Report continued.)

their recycling management with a glad and happier mind-set. The sheer size, cost and mechanism of this service will truly astound anyone who wishes to attend. Of course, it is advisable dress suitable for the environment which can be stuffy accompanied by an odour. Many schoolchildren have visited from all over the County and participated in competitions to improve the way they view their outlook on recycling. Let's not get left behind! Please contact Mark at AmeyCespa East, Ely Road, Waterbeach, Cambridge, CB25 9PG or telephone on 01223 815467 or 07917 405246.  
*Vince Campbell*



**Alan Heath ADI**



Fully Qualified Driving Instructor.  
Dual Control Car Very Competitive rates  
All Enquiries: 01223 811181 or 07824 905177

Professional Cleaning of Carpets,  
Upholstery, Rugs & Leather




*The furnishing care specialists from GUARDIAN*

Safe Organic  
Cleaning 

Organic based cleaning solutions  
Allergy-Out anti allergy treatment  
Guardman anti-stain protection  
Spot cleaning & stain removal  
Free advice & estimates

Safeclean Cambridge Ltd  
08700 465 528  
www.safeclean.co.uk



**SANICLEAN**  
DRAIN & PLUMBING SERVICES

**R. BRISTLEY** Est. 1974  
9 Collings Place, Newmarket

- Drains Unblocked Fast
- Toilets, Baths and Sinks
- Guttering and Downpipes
- Drain repairs and CCTV Surveys
- High Pressure Water Jetting
- Domestic and industrial
- All Work Guaranteed

Telephone:  
Newmarket (01638) 662439  
Mobile 07970 038404

## ***Bottisham Carpet Bowls Club***

### ***An Insight into Carpet Bowls***

For bowlers, the iconic image of summer is a warm, sunny afternoon spent on the bowling green. However, as we know winter brings differing weather and for keen bowlers, this presents a major problem – how to pursue their favourite sport during the closed season. For many bowlers the answer has been carpet bowls.

Carpet bowls is a game adapted to the need to bowl in venues such as village halls, church halls and clubhouses. The playing surface is a portable carpet 30 feet long by 6 feet 6 inches wide. This means that any clear space of about 40 feet by 8 feet is sufficient. All equipment is provided by the club and an individual's cost is normally an annual subscription.

All bowls disciplines are by their nature competitive and this is certainly true of carpet bowls. Suitable for men, women and the disabled, it is essentially a drawing game encouraging skill and accuracy from its players .

**Bottisham Carpet Bowls Club** welcomes new members. It meets at Bottisham Village College on Wednesday and Thursday evenings. We play in the East Cambs League against other local clubs and enjoy club nights and social events. We are having an open evening on Wednesday 16 September from 7.15pm and we will be pleased to see you.

If you would like to give it a try (four weeks free) please give me a ring and I'll answer any queries you may have. Peter Hofton, 01223 811191, peterhfton@btinternet.com



**Property Maintenance Ltd**

**For the best in  
Renovation,  
Redecoration  
& Repair**

Contact Joel Clarke-Morgan  
On 07885 586229  
or e-mail; JCM@weyr19.co.uk

www.jcmpropertymaintenance.co.uk  
47 Edinburgh Rd, Newmarket CB8 0QE

**R. BRISTLEY** Est. 1974  
9 Collings Place, Newmarket CB8 0EX



**BRUSH ELECTRIC SWEEP**

- All Chimneys Swept
- Solid Fuel, Oil and Gas
- Cows, Nets and Pots Fitted
- Firebacks Replaced
- Carpets Cleaned
- Competitive Prices
- Very Clean
- Family Business
- Public Liability Insurance



Telephone:  
Newmarket (01638) 662439

www.cambridgeshirechildrenscentres.org.uk  



**WHAT'S ON FOR FAMILIES WITH CHILDREN UNDER FIVE**

**Stay and Play (£2 charge per family)**  
 Bottisham Children's Centre: Mondays 9.30 - 11.30am  
 St Andrew's School, Soham: Mondays 9.30 - 11.30am  
 Burwell Sports Centre: Thursdays 9.30 - 11.30am

**Little Movers (Free)**  
 Soham CC: 1.00 - 2.00pm (under 1's) and 2.00 - 3.00pm (ages 1-2)  
 Bottisham CC: from 12.30 - 2pm (ages 0-2)

**Sun Dads (£2 charge per family)**  
 Burwell Sports Centre: 3<sup>rd</sup> Sunday of month, 1 - 3pm.

**NHS Well Baby Clinic (Free)**  
 Mandeville Hall, Burwell: 2<sup>nd</sup> and 4<sup>th</sup> Tuesday of the month, 1.15 - 2.45pm.

**Rhyme Time (Free)**  
 Soham Children's Centre: Mondays 2 - 3pm.

To see our full timetable or get more information call us on 01353 727188 or email [sohamchildrenscentre@cambridgeshire.gov.uk](mailto:sohamchildrenscentre@cambridgeshire.gov.uk)

**Little legs of Lode**  
**Montessori Nursery**

  
 Passage Hall  
 Lode

We have spaces for children aged from 2 years onwards each morning in term time.

The Montessori method allows children the freedom to be creative, to learn and to develop at their own pace in a calm environment.

Please contact Sharon for a prospectus or to arrange a visit.

[sharon.maskall@virgin.net](mailto:sharon.maskall@virgin.net)  
 Tel: 07572 121463

**RNIB** supporting blind and partially sighted people

**There's nothing quite like a good cup of tea ...**  
 Especially if it raises money for a really good cause!

That's why we're inviting you to host a Tea for RNIB party this summer. Join hundreds of people across the UK raising money to support blind and partially sighted people.

Call 0845 345 0054 and we'll send you everything you need to get your Tea for RNIB party started. You just need to invite your friends to your house, garden, street or anywhere else you fancy.

There's a serious side to the party. Did you know that in the next 15 minutes, someone in the UK will be told: "You are losing your sight"? But right now, we can only reach one in three of the people who need our help the most. Your support can help more blind and partially sighted people to face the future with confidence.

You could support us by:

- Asking guests to donate for a slice of cake and a cup of tea
- Selling raffle tickets for donated prizes
- Asking for donations to guess the number of sweets in a jar
- Selling home crafts or yummy delights

Remember, it's easy and fun to run a Tea for RNIB party. There's loads more ideas in our free party pack, just call 0845 345 0054 or visit [www.rnib.org.uk/tea-rnib](http://www.rnib.org.uk/tea-rnib) to order yours today.

*Hayley Newton, Area Fundraising Manager - East Anglia*

**RNIB (Royal National Institute of Blind People)** • Bakewell Road, Peterborough, PE2 6XU • t: 01733 375 372 • m: 07908 473 043 • e: [hayley.newton@mib.org.uk](mailto:hayley.newton@mib.org.uk) w: [www.rnib.org.uk](http://www.rnib.org.uk) • Join us on Facebook: [www.facebook.com/mibuk](http://www.facebook.com/mibuk) • Follow us on twitter: [www.twitter.com/rnib](http://www.twitter.com/rnib)

  
**Saplings**  
 Pre-School Playgroup

**Saplings**  
**Pre-school Playgroup**

Based in Bottisham Primary School grounds,  
 we offer lots of fun & structured play  
 with caring qualified staff in a safe environment

Playgroup for 2 yrs. Onwards, Monday to Friday  
 Morning Sessions 9.00am - 12 noon  
 £10 per session

Places now available  
 Call 01223 813226 for more information



**Anglesey Benefice For Samaritan's Purse**  
**Operation Christmas Child - Shoe Boxes**  
**Saturday 17th October, 2015**  
 At St Cyriac's Church, Swaffham Prior, 11am - 2pm

We will be packing Christmas Shoe Boxes to send to needy children overseas. Bring along your donation and we will do the rest from filling boxes to arranging their despatch (completed boxes also gratefully received).

Enjoy a cuppa and a piece of cake, the proceeds of which will go towards buying items to make up incomplete boxes and shipping costs.

If you are able to spare an hour on the day then your help would be very much appreciated to sort the gifts and pack boxes (please contact Janet Willmott, details below, if you are able to assist with these)

**Yes please to:**

-Toys: bear, soft toy, finger puppet, jigsaw, yo-yo, building blocks, small musical instrument, trucks, cars, dolls, clip on earrings, tennis ball, etc.

-Educational supplies: felt pens, pens, pencils, colouring book, notepad, puzzle book, stickers etc

-Hygiene items: toothbrush, hairbrush, hair clips, bar of soap, flannel etc

-Other: sweets (sell by date to be at least March 2015) gloves, scarf, sunglasses, hat, bangles, etc

All items should be new

**No thank you to:**

Food, especially chocolate; Medicine or vitamins of any kind; War related items; Toy guns, soldiers or knives of any kind; Clothing other than hats gloves or scarves; Fragile items or liquids; Dangerous items, sharp objects, scissors or razors; Novels or anything of a political nature; Hand-knitted stuffed toys

Contributions are required to cover the suggested £3.00 "shipping" donation of each box, which can be gift aided making every £1 worth 25p more. Boxes are made up for either a boy or girl with the age categories being 2-4 years, 5-9 years and 10-14 years.

If you are unable to pop along to St Cyriac's on 18<sup>th</sup> October but have a contribution, please do contact me, Janet Willmott, on 01638 743472 or 07833 960678, and I will arrange for collection. - Thank you so much!

# JOHN JARVIS

## BUILDERS

Property Maintenance, Extensions,  
Alterations, Painting, Brickwork, Roofing

All building work carried out

Prompt friendly service

Insurance work undertaken

**01638 751826**

**Mobile 07802 659283**

No job too small

## Fed up Repairing Your Flat Roof?

Does your roof suffer with any of the following?

Leaks • Moss Growth • Cracks or Bumps

Over 10 Years Old? Stop! Replace it now



You can't always see what is happening to your flat roof so, Replace it Once and for All with our unique RubberBond EPDM Flooring System, guaranteed not to leak or crack and tough enough to stand on.

### Money Back Guarantee

Proven to last over 20 years and guaranteed not to leak - or we'll give you your money back

CALL NOW for your FREE, advice, survey and no obligation quotation

**FREE**  
Quota & Guarantee  
with every  
Replacement Flat Roof

Thank you to the  
100,000+ happy  
customers who have  
chosen RubberBond

**01223**

**258049**

PROJECTS 4 ROOFING

[www.projects4roofing.co.uk](http://www.projects4roofing.co.uk)

RubberBond  
100% EPDM  
20 Year Guarantee

100% EPDM  
20 Year Guarantee

## LINCE & HOSTLER

YOUR LOCAL PAINTERS & DECORATORS

*With over 20 years experience we pride ourselves in offering an exceptional quality of workmanship at a reasonable price*

### NO JOB TOO BIG OR SMALL

- ✦ Domestic and Commercial Work
- ✦ Interior and Exterior Painting
- ✦ Coving Supplied & Fitted
- ✦ Specialist Painting
- ✦ Wallpapering
- ✦ Tiling

Call now for a free no obligation estimate...

**01223 812 227 / 01954 211 673**

**07952 130 571 / 07952 130 570**

## C. G. Gardiner

*Heating and Plumbing Services*

*For all your domestic heating  
and plumbing needs contact*

☎ **01223 811883**

*Howgar House, 41 Bell Road, Bottisham, Cambridge, CB25 9DF*

## Saffron Salt Supplies

**Water Softener Salt**  
Salt tablets in 25 or 10kg bags

Block salt in 2x4kg packs

**Dishwasher Salt**

Granules in 10kg bags

**De-icing Salt**

White crystal in 25kg bags

delivery **FREE** to your door  
visit our website for full listing  
[www.saffronsalt.co.uk](http://www.saffronsalt.co.uk)

Place your order by phone

**07980 581815** or email

[info@saffronsalt.co.uk](mailto:info@saffronsalt.co.uk)



## N.C.S.

**BRUSH ELECTRIC SWEEP  
ALL CHIMNEYS SWEPT**

- BIRDS NESTS REMOVED
- OIL & GAS BOILERS
- SOLID FUEL, STOVES FITTED
- SMOKE PRESSURE TESTING
- INSECT MESH, POTS, COWLS
- FLUE LINERS SUPPLIED & FITTED
- BIRD GUARDS & TERMINAL FITTED
- GUTTERS CLEANED & REPAIRED
- GENERAL PLUMBING WORK

**FOR FREE QUOTE CALL  
07824 727277 or 01638 662760**

EMAIL  
[NCS.NEWMARKET@YAHOO.CO.UK](mailto:NCS.NEWMARKET@YAHOO.CO.UK)

WEBSITE  
[www.ncsnewmarket.co.uk](http://www.ncsnewmarket.co.uk)

\*Send text or e-mail for 10% discount  
Answers within an hour. • Waiting time approx. 1-2 weeks

**VERY CLEAN • Public liability insurance**  
- Competitive rates -

# R & S SERVICES

## PICTURE FRAMING

For all your framing requirements including  
Tapestries, Notice Boards, Certificates,  
Ready-made Frames and Mount Cutting

Rear of:  
128 Fulbourn Old Drift  
Cherry Hinton  
Cambridge CB1 4LR

Proprietor:  
Roy Northrup  
Tel: (01223) 243077

# Grow

**How does your garden grow?**  
Whatever the size, whether you require a  
complete re-design or ongoing tending,  
**I can help.**

I offer a personal, reliable & experienced  
service. Fully insured, references available.

*Chelsea medal winning  
garden design & gardening  
by Paul Herrington*

Telephone: 01223 882981  
Email: paul@growcambridge.co.uk  
Website: www.growcambridge.co.uk  
Facebook: www.facebook.com/GrowCambridge

## Beauty By Abi

*Qualified and insured Beauty Therapist  
Master Technician in Eyelash Extensions*

*Treatments include: Gel Fix 2 week manicures, manicures and pedicures, eyelash extensions,  
eyelash and brow treatments, waxing, massage, tanning, facials and more*

*Phone 07969495073 for an appointment*

## GCSE Maths Tutor Ben Horwood MA

22 Woodditton Rd  
Newmarket  
01638 662079  
07753 264135

## ALAN R. COOPER

BSc(Hons)Pod. M.Ch.S  
Podiatrist/Chiropodist • Newmarket  
(Est. RC Cooper SR Ch.1934)

Routine Chiropody & Home Visits  
Ingrown Toenails by Local Analgesia  
& Footwarts by Cryosurgery (freezing)  
Biomechanical Assessment + Orthosis  
Instruments sterilised by Autoclave

**TELEPHONE 01638 662840**  
**4 Market St., Newmarket CB8 8EE**

## GERMAN LANGUAGE COACHING

Native German Speaker  
Qualified Teacher  
Coaching to GCSE level

Karin Hulme 812669

## ALL OCCASION CARDS

Hand made to order  
and personalised  
by

*JOAN CRESSWELL*

*Tel: 01223 811783*



## The Beauty Room (est. 10 Years)

At 54 Station Road, Fulbourn. Tel. (01223) 574406

**Beauty Treatments For Women  
in a Professionally Fitted Treatment Room**

*Manicures Pedicures Gel Manicures Facials  
Waxing Eyelash & Eyebrow Treatments*

**Opening Hours:** Tues, Wed & Thurs 9.15am - 3.30pm (Fridays – please enquire)

**Receive a 20% discount on your first appointment when you  
mention this advert (Excludes Gift Vouchers & Retail Products)**

**Call Alison Rogers (IHBC Qualified) on 01223 574406**



Website: [www.bakingessentials.co.uk](http://www.bakingessentials.co.uk)  
 Email: [claire@bakingessentials.co.uk](mailto:claire@bakingessentials.co.uk)  
 Telephone: 01223 812167

Baking Essentials is an online shop selling a variety of products to inspire all generations from cake toppers to baking equipment for the younger bakers.

We are based in Bottisham and offer a click and collect service.

Fit to live life - for the rest of your life!

# MOVES Fitness

**QUY VILLAGE HALL**  
 Mondays 8:00pm - 9:00pm

**FULBOURN TOWNLEY HALL**  
 Thursdays 8:00pm - 9:00pm

**EVERYONE WELCOME**  
 £5.00 per session

Exercise really can be this much fun!

Contact Mel Wilson for more information: 01223 811108

Find me and Moves Fitness on Facebook



[mel@mwilson04.plus.com](mailto:mel@mwilson04.plus.com)  
[www.movesfitness.com](http://www.movesfitness.com)

## FINISHING TOUCH

*Jewellery*  
*Candles*  
*Fashion*  
*Gift wrap*  
*Handbags*  
*Scarves*  
*Jellycat Baby*  
*Cards*  
*Lazy Jacks*  
*clothing*



Open: Mon-Fri : 10am - 5pm Sat : 10am - 4pm  
 59 High Street, Burwell Tel: 01638 744377



### My love for dogs An alternative to Kennels

A personal, caring approach to dog care.

In our home, your dog will receive two hour-long walks every day as well as treats, socialisation with other dogs and the administration of any required treatments.

- o Fully insured and police checked
- o Licensed by Sth. Cambs. District Council.

For further details call Amanda on  
 07903 806750

Based in Steeple Morden near Royston.

## BURY CATTERY

*Offer*  
*Full Boarding*  
*Services for*  
*Cats only*

**CAMBRIDGE**  
**811945**

T  
P  
M



**Taylored  
Property  
Management**

Your letting property is a key asset in your life, ARE you getting full value from it?

If you are not and you want a service that will release it's full potential and a free rental appraisal then come to the people that are able to offer you a "Taylored" package to suit your needs.

We offer a full comprehensive property management service, just as though the property was our own all at affordable rates to suit you:

**FREE** Energy performance certificate

**FREE** Initial letting fee

For your own personal service contact  
 Steve Taylor on 01638 741717 or 07753 272765 or email [steve@tayloredpm.co.uk](mailto:steve@tayloredpm.co.uk)  
 9 Station Gate, Burwell, CB25 0BZ.

# Fed up Painting Your Roofline?

Does your roof suffer with any of the following?  
**Flaking Paint - Rotten Timbers - No Ventilation**  
**Blocked or Leaking Gutters - Nesting Birds**  
**Over 10 Years Old?**



**Stop! Replace it now**  
 Replace it with long-lasting, highest quality fascia, soffits & cladding with a 50 years product guarantee  
 Full replacement - no capping over  
 Ventilation, guttering, downpipes

CALL NOW for your FREE, advice, survey and no obligation quotation

**01223 258049**

**PROJECTS 4 ROOFING**

[www.projects4roofing.co.uk](http://www.projects4roofing.co.uk)



## P. Marsh Electricals & Household Maintenance

(Kitchen & Bathroom Refits)

### Part-P NICEIC registered Electrician

Testing and certification of electrical systems  
 Periodic Inspections  
 Fault finding and repairs  
 Fuseboard upgrades  
 New installations  
 Full / partial rewiring  
 Sockets  
 Lighting  
 Showers (all types)  
 Power to sheds / garages  
 Security and outdoor lighting



General household maintenance from a dripping tap to a full kitchen/bathroom refit



01638 744 281

07941 107 321

(Based in Burwell)

[www.pmarshelectricals.co.uk](http://www.pmarshelectricals.co.uk)

## OvenPad Cleaning Services

I will professionally & efficiently clean ovens, ranges, Agas, ceramic hobs, extractors, microwaves and BBQs.

**It's a dirty job, why not give me a call?**

Contact **Paddy Kelly** on

Tel: 01638 742703

Mob: 07752 631343

Email: [info@ovenpad.com](mailto:info@ovenpad.com)

Website: [www.ovenpad.com](http://www.ovenpad.com)

## JEFF HUNT

01954 780 999

[jeff@mcarpetcare.com](mailto:jeff@mcarpetcare.com)

- ✓ Carpet Cleaning
- ✓ Upholstery Cleaning
- ✓ Tile & Grout Cleaning
- ✓ Leather Cleaning
- ✓ Oriental Rug Cleaning
- ✓ Carpet & Fabric Protection
- ✓ Allergy Relief Treatment
- ✓ Odour Eradication
- ✓ Stain Removal
- ✓ Carpet Fitting

A Family business since 1980



WINDOWS, DOORS & CONSERVATORIES

- UPVC Windows & Doors
- Conservatories
- Cladding
- Fascias
- Guttering
- Family Run Business
- 20 Years Experience

Call Gary 07889 769131 or 01638 717448

[www.gwwindowsdoorsuffolk.co.uk](http://www.gwwindowsdoorsuffolk.co.uk)

Charles Melrose Close, Mildenhall, Suffolk IP28 7BA



# K.J.P.

## Building/Maintenance



Including:

Design, landscapes, patios, fencing, gardening, decking, painting, decorating, tiling, all interior work, etc.

Tel: 01223 812021 or mobile 07799 504043

## ANGLIA GAS & ELECTRICAL SERVICES



Sales - Service - Repairs - Installation

- Gas Boiler/Central Heating Systems
- Domestic Gas / Dual Fuel Appliances
- Nat. Gas/LPG Landlord safety checks
- Electrical /Portable appliance Testing
- Electrical and Plumbing Maintenance

Contact: Jim Perry on

01638 741432 or 07768 856456

**Electrician**  
**J.W.Electrical**  
**Competitive Prices**  
**Free Estimates**  
**Fast Friendly Service**

**Part P Approved for Building Regulations**

**07804 896861**

**01223 574262**



**TV AERIALS**

**SATELLITE**

**DIGITAL FREEVIEW**

Installations  
Extra points etc.  
Tuning in of TVs, Digiboxes etc.

Experienced local engineer  
**RICHARD FORTEY**  
**01638 662119**  
No Call Out Charge

## **Hilton Park Care Centre**

**BARCHESTER HEALTH CARE**

We cater for:

*Young Physically Disabled • Elderly Nursing • People living with Dementia • Mental Health*

A Centre of Excellence • Newly Refurbished Spacious Accommodation

Ensuite with all Amenities • Beautiful Views • Spacious Grounds with Wildlife

Wide Selection of Delicious Food • 24-hour Qualified Staff on Duty

Specialised Equipment: Hoists, Assisted Baths, etc.

Activities Tailor-made for the Individual • Nursing Care Planned using the Activities of Daily Living

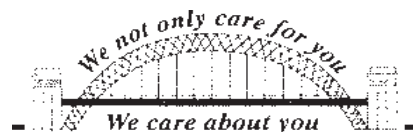
Open Visiting Times

**Our Home is Your Home**

Tel: (01223) 811256

Fax: (01223) 812692

Please contact:  
Home Manager



Bottisham  
Cambridge  
CB25 9BX

## **SWIMMING LESSONS**

**Enrolling now for all abilities**  
**Call now on: 01223 811121**

 [facebook.com/BottishamSportsCentre](https://www.facebook.com/BottishamSportsCentre)  
[www.bottishamvc.org/sportscentre](http://www.bottishamvc.org/sportscentre)

 **Bottisham  
Sports Centre**

Bottisham Sports Centre  
Lode Road  
Cambridgeshire  
CB25 9DJ



**A. J. PRINCE**  
Painter and Decorator  
Interior and Exterior



*No Job too large or small  
Free estimates and advice*

24 Hall Lane Burwell  
Tel: 01638 741 420  
Mob 07880 622933

**D.S. FREEMAN**  
*Painters &  
Decorators*

- Residential & Commercial
- Interior & External
- Fully Insured
- All Aspects Undertaken

duncanfreeman@hotmail.co.uk  
**Tel: 01223 812920**

43 Mill Road, Lode, Cambridge CB25 9FN

**COMPLETE PLASTERING**

TILING • DRYLINING • ALL BUILDING WORK  
CARPENTRY • SCREEDING  
LIME PLASTERING • PAINTING & DECORATING

Covering all of Cambridgeshire

CONTACT: GLENN WARDER

TEL. 01223 811991  
MOB 07734 904050

E-MAIL: COMPLETEPLASTERING@MSN.COM  
RELIABLE SERVICE FREE ESTIMATES

**E.J. DENSTON**  
KITCHENS & CARPENTRY

All aspects of Carpentry & Joinery  
New Build 1st & 2nd fix carpentry  
Purpose made cupboards, wardrobes  
& Bookcases  
Kitchens supplied & fitted  
Renovations & small build works



**BOTTISHAM 01223 813323**  
Mobile 07711578687

**Carpentry Services**  
**TONY MARTIN**

Over 30 years experience

*Any carpentry jobs  
undertaken — BIG or small*

Call Tony  
for a free estimate  
**Tel: 01223 812786**  
**(Bottisham)**  
**Mobile: 07767475987**



**DRAIN-PLUMB**

*Plumbing, Heating & Drain  
Services*

**BLOCKED DRAINS CLEARED**

- Gas Boiler Service & Maintenance
- Power Flushing of Boilers & Heating Systems
- Home Buyers CCTV Drain & Plumbing Surveys
- All Plumbing & Heating Repairs/Alterations
- All work Guaranteed

TEL: 01638 742873  
MOB: 07932 773515

7 NESS ROAD,  
BURWELL,  
CAMBRIDGE, CB25 0AA



# BOTTISHAM & DISTRICT GARDENING CLUB



## ANNUAL SHOW

\*\*\*\*\*

**SATURDAY, 12 SEPTEMBER 2015**

**from 2 to 4 p.m.**

**at Bottisham Royal British Legion**

\*\*\*\*\*

**To be opened at 2 p.m. by KEN YORK  
President, Bottisham Gardening Club**

\*\*\*\*\*

**Refreshments available throughout the afternoon**

\*\*\*\*\*

### Categories include:

**Fruit and Vegetables; Flowers; Baking & Preserves;  
Crafts; Painting & Drawing; Photography; and  
Children (age groups: under 5; 5-7; 7-11 and 11-16)**

**Something for everyone – give it a go!**

[www.bottishamgardeningclub.co.uk](http://www.bottishamgardeningclub.co.uk)

## BOTTISHAM & DISTRICT GARDENING CLUB

### ANNUAL SHOW 2015 - ENTRY FORM

Completed entry forms (no exhibits) with entry fees should be sent to:  
**Valerie Leake, 16 Beechwood Avenue, Bottisham, CB25 9BE**  
no later than 12 noon on Thursday 10 September 2015

**Members:** first 5 entries free, 50p per exhibit thereafter.

**Non-members:** 50p per exhibit      **Children:** Free

**Maximum fee: £5** (members and non-members)

**Late entries** may be accepted up to 9.30am on the Show Day and will be charged at £1 per exhibit.

**Member:** YES / NO      Name: \_\_\_\_\_

Address: \_\_\_\_\_

Telephone number \_\_\_\_\_ Age (if still at school) \_\_\_\_\_

Email \_\_\_\_\_

See July Cresset for class numbers

<i>Class number</i>	<i>Class name</i>	<i>Fee</i>
<b>TOTAL FEE ENCLOSED</b>		<b>£</b>

The **Bottisham Airfield Museum** has been busy putting the building blocks in place for future success. We are now a registered charity, the charity now owns the land and buildings and we have just been granted planning permission to change the use of the buildings to a museum and erect a Nissen hut in its original 1944 position.

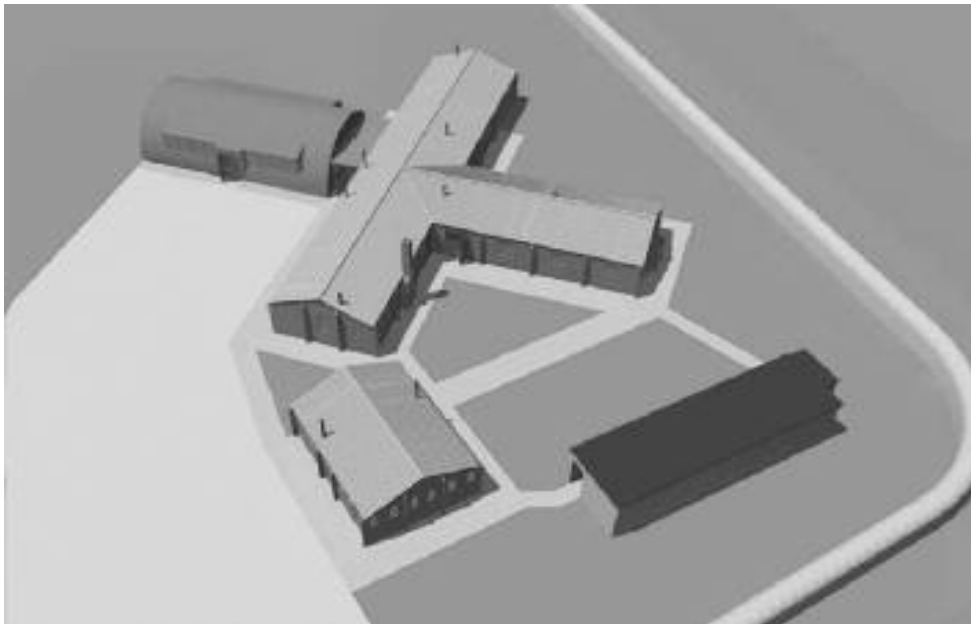
Phase 1 of the work will include the erection of the Nissen hut which will provide a multi-functional museum space and a show home for our future efforts. We will also refurbish the original wartime latrine buildings which will give us proper facilities for the site including disabled toilets. It is hoped to complete this phase by September this year so we can begin to open the site to visitors.

For the refurbishment of the main buildings we are applying to the Heritage Lottery Fund and this could take up to 3 years. Once completed we hope to have a museum that we appeal to all including school children. Part of its appeal will be a balance of traditional displays and audio visual presentations that will make more of an immersive experience.

Our recent focus has been returning the buildings to their original 1944 configuration and there has been much work (most of it carried out by volunteers) removing the modern fittings and fixtures associated with the Smokery. However we also planning some events. The foremost of which will be another Open Day on Sunday 27th September 2015 where we hope to have all the usual attractions including 1940's music, re-enactors, military vehicles and perhaps even a small scale air display.

To make this all happen we need volunteers to help us. If you are interested in helping us whether its couple of hours serving teas and coffees or whether its administering our membership records or helping run our website – any help would be greatly appreciated!

Please get in touch with Jason Webb, Chairman of the Trustees on 07791 971799 or email [jasonwebb@bottishamairfieldmuseum.org.uk](mailto:jasonwebb@bottishamairfieldmuseum.org.uk)



## Looking back ... and looking forward!

RE:NEW has a new minister! This month Rev. Alan Brand, his wife Tammy, and four children, Faith, Reuben, Benjamin and Grace, will be joining the RE:NEW Church family. They are moving down from Stockton-on-Tees and will be living in Lode. We are really excited about what God may have in store for us as we set out on this next stage of our RE:NEW journey together.

Our church has its roots in the history of Lode Chapel going back over more than 200 years. The first minister at Lode was Rev. Thomas Reynolds, who presided over the building of the original chapel in 1810. The fellowship grew rapidly in the early years, with new converts being baptised in the river by Drover Bridge in Lode. By 1828 the original building needed to be enlarged, and in 1855 the Sunday School rooms were added to the building.

Over the years the church has known periods of growth and also of decline. It has known times of great joy, but also times of upset and division. All of this is reflected in the church archives which record that several times in the past the church has needed to be re-formed, and a fresh start made.

However, our aim and purpose is not to be looking back to the past, but moving forward into the future. The church which Alan and Tammy will be joining is a lively, outward looking group of people of all ages, who enjoy being together and are learning how to live as followers of Jesus in the topsy-turvy world in which we live.

RE:NEW holds its regular Sunday morning services at Bottisham Primary School, while continuing to have a monthly traditional evening service in Lode Chapel.

The church family continues to grow, and Lode Chapel remains a focal point within the village of Lode, with a traditional service once a month, and the building being used by various community groups and organisations during the week.

Alan Brand will be bringing new gifts and ministries, a new vision and new challenges to us all at RE:NEW. We are looking forward to it! If you are looking for something new and different; if you are looking for a challenge; if you are wanting a new sense of purpose and direction in your life, then RE:NEW might be just what you are looking for! Why not come along and give us a try? You'll receive a warm welcome, and a cup of coffee! There's nothing to lose, and maybe a lot to gain!

*Peter Wells*

### RE:NEW Services in September 2015.

*We have activities for children and young people at all our morning services, and a crèche is available if required. All are welcome.*

*6th September. 10.30am – RE:NEW The Bigger Picture*

*(Bottisham Primary School) With Holy Communion*

*13th September. 10.30am – RE:NEW Café style (at the School)*

*13th September. 6.20pm – Traditional service. (Lode Chapel)*

*20th September. 10.30am – RE:NEW The Bigger Picture (at the School)*

*27th September. 10.30am – RE:NEW The Bigger Picture (at the School)*

***Please note that owing to the closure and sale of Great Wilbraham Chapel there will be no more services held there.***

*For more information about any of the activities of RE:NEW please contact:*

*Rev. Keith Morrison on C.813055*

*or Peter Wells on C.812388. Email: [pandawells@cheerful.com](mailto:pandawells@cheerful.com)*

*Or visit our website at [www.re-new.me.uk](http://www.re-new.me.uk)*

**Contact details for Rev. Alan Brand will be given in next month's magazine.**

## Trevor's Local Gardening Service

For general garden care and carpentry maintenance

We are pleased to support

**THE CRESSET**

OUR VILLAGE MAGAZINE

## Dale Parker

Landscape Gardener and Tree Surgeon

Turfing, Seeding & Planting, Patios and Drives Block Paving & Natural stone

Trees Topping, Lopping, Shaping and Felling Hedge Cutting Fencing

FREE ESTIMATES  
Tel: 01284 728497  
Mob: 07799 671010

## Bottisham Players

It's September and the children are back at school and you are counting the shopping days until Christmas! Well, Bottisham Players are thinking even further ahead than that to our next production, our popular pantomime for January 2016. We know that it is early days, but we are already looking at scripts and planning dates for the auditions.

We need lots of friendly faces both young and old to help make this next production as popular as ever. We are looking for actors, chorus members and backstage boys and girls. If you would like to help out but don't want to 'tread the boards' we would welcome front of house helpers.

We hope that you will be interested in joining our friendly group and hope that you will want to find out more.

Please contact via [www.bottishamplayers.org.uk](http://www.bottishamplayers.org.uk). Don't forget to look us up on our Facebook page where you can also message us and find updated information.

Get together for a cuppa and cake to support local patients with breast cancer  
Friday 23 October 2015

Can you host a tea party to help raise money for the Addenbrooke's Breast Cancer Appeal?



Invite friends, family and colleagues on Friday 23 October (or a date convenient to you) for tea and fun 'boobie' bakes. How about bakewell tarts, Chelsea buns or macaroons? It's as easy as A, B, C! Your support will help fund clinical research into personalising treatment for patients with breast cancer. To find out more please call Emily at Addenbrooke's Charitable Trust (ACT) on 01223 349297, email [communityfundraising@addenbrookes.nhs.uk](mailto:communityfundraising@addenbrookes.nhs.uk) or go to [www.act4addenbrookes.org.uk/ABCappeal](http://www.act4addenbrookes.org.uk/ABCappeal)



ONG

Designers of

**Cresset**

codge.com  
info@codge.com  
01449 675 548

Design & Origination • Website Design & Maintenance • Email Marketing • Digital Publishing • Logo Creation • Cartoons & Illustrations • Theatrical, Product Photography & Retouching • Business Stationery • Promotional Flyers & Posters • Newsletters & Magazines • Programs & Catalogs • Books & Brochures • Calendars • Reports • Signage, Displays & Banners • Personal & Wedding Stationery • Mac Training



**Les Misérables – The Play** We are excited to present this, our October production, which will be at The Townley Memorial Hall, Home End, Fulbourn, from **Wed 28th- Sat 31st Oct 2015 at 7.30pm.**

Jean Valjean is released on parole, a bitter man, after nineteen years' incarceration. A chance encounter with a kindly priest sets him on a new course, returning good for evil and kindness for cruelty. This is the story of the lives touched by Valjean - unable to save vulnerable Fantine, he promises that her daughter, Cosette, will want for nothing and raises her as his own. We encounter the despicable Thénardiens, the lovelorn Éponine, romantic Marius and many other fascinating characters, but Valjean's greatest challenge comes from Inspector Javert, whose rigorous pursuit of the law shows neither fear nor favour, culminating in an irrevocable confrontation, which changes their lives forever.

We are not allowed to do the West End musical version of **Les Misérables**, which is restricted to youth groups only, but we know that you will find our version, with atmospheric lighting and music, a few appropriate songs and a stupendous and exciting 'barricade scene' with dramatic effects, a memorable and exciting evening.

Tickets are on sale **NOW**, priced at £8 (£7 concessions) from the **Box Office** on **01223 210737** (from 5.00pm-6.30pm) - **NO booking fee** or online: [www.ticketsource.co.uk/stjohnsplayers](http://www.ticketsource.co.uk/stjohnsplayers)  
**Online booking incurs a booking fee**

## PREMIER INVESTMENT MANAGEMENT SERVICES LTD

INDEPENDENT INVESTMENT ADVISERS Authorised &  
Regulated by the Financial Conducts Authority

Specialist in Isa's & Isa Transfer's  
Investment Planning & Portfolio Management

To arrange a free consultation ring **01223-882422** or email  
**pims@globalnet.co.uk** or visit **www.pims-uk.com**



**"Nesslands of Burwell"**

Your local Dog Kennels, Gattery and Doggy Day Care!  
Delivery and Collection Service Available !

Fully Licensed by ECDC and Veterinary Inspected.  
Ness Road, Burwell. CB25 0DB [www.nesslands.com](http://www.nesslands.com)

Call Tim or Anya on **01638 720623**



**1st Bottisham Scout Group  
Hiring Service**

Bottisham Scout Headquarters is available for hire for  
children's parties, dance lessons, meetings, keep-fit,  
jumble sales, drama, music practice sessions etc.

*For hall hire contact Adam Paul*  
***adampaul@btopenworld.com • 01223 813531 • MOB 07841 930065***

We also have a trailer and a trailer tent available for hire.  
***For equipment hire contact Peter Terry: 812684***



## For All Your Property Needs

Your Local Independent Property Agent  
Honest, Professional & Proactive

01223 352170

John Lorimer 07712 864332 or Kane Astin 07711 629300

Residential Sales, Lettings, Property Investment,  
Estate Management & Development

[sab.co.uk](http://sab.co.uk)

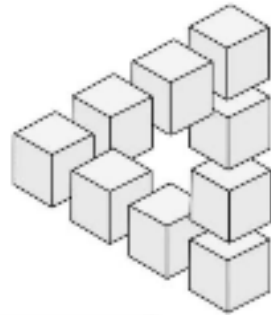
London  
0208 4330032

Cambridge  
01223 352170

Hereford  
01302 501752

Foyston  
01763 242222

Longstanton  
01354 781563



## INDEPENDENT FINANCIAL SOLUTIONS

- You know that the State Pension is not enough, but you don't know what it will provide!
- You want to save for your retirement, but you don't know what you will need!
- You wish to protect your family against financial disaster, but don't know what cover you require!
- You need to make your money work hard, but don't know which option is best for you!
- You would like to reduce your tax bill, but you don't know how!

- 
- **Whether you own a company, are self employed, employed or retired, we can help!**
  - **We don't believe in adding to your problems.**
  - **We believe in clear and simple solutions.**

Let us provide you with an **INDEPENDENT** review of your financial situation.

Tel: 01638 615343

Fax: 01638 615342

E-Mail: [qc@independent-financialsolutions.co.uk](mailto:qc@independent-financialsolutions.co.uk)

Website: [www.independent-financialsolutions.co.uk](http://www.independent-financialsolutions.co.uk)


Nowham Farmhouse, 16 Low Road, Burwell, Cambs, CB25 0EJ  
Partners: Quentin Cooke (authorised Independent Financial Adviser) & Alison Cooke

## Sales, Wants and Swaps



**IF YOU HAVE ANYTHING TO SELL OR WANT TO BUY OR EVEN TO SWAP, THEN THIS PAGE IS YOURS TO USE.** Please e-mail details of item, price and landline phone number to the Editor at the Cresset. E-mail details to [Cresset@Bottishampc.org.uk](mailto:Cresset@Bottishampc.org.uk). Entries by 12th of the month for next months issue. Max 5 items.

DESCRIPTION	PRICE	TEL
Coach built Marmet pram in bottle green. Do come and see it.	£30	812676
Mamas and Poppas buggy, only owned by granny, so underused. Grey/white check, rain cover, cosy toes, and full instructions. Can adapt from pram to pushchair.	£20	812676
Wall clock with pendulum, dark wood. Chimes.	£30	812676
Computer Keyboard (Logitech)	£5	880491
"Pergo" laminate flooring planks. Blue/grey wood effect. 7 planks each 15 cm x 119 cm + approx. 25 planks of varying lengths. Ideal for utility room etc	£50	880491
Luxury vinyl flooring planks - (Camaro - white limed oak). 24 planks, area 3.34 sq m) Brand new, in unopened box. (Retail at £52).	£50	880491
Mamas and Papas CD. Excellent condition.	£2	880491
Electric cooker and Cooker hood, less than 18 mths. old, 50cm wide	£65	811378
Five Drawer chest 31"W 42"H 18"D, cream with brass handles.	£5	812123
TRAIN TABLE by IMAGINATION: incl. over 7m of track, trains, crane, helicopter pad and tunnels. Also features lights and sounds.	£65.00	811450
Black leather coat size 10, as new	£30ono	811783
Cashmere & wool mix ¾ coat, black as new	£40ono	811783
Windproof padded blue/black ski jacket, hooded, medium, as new	£25ono	811783
Tommy Hilfiger purple hooded jacket, white faux fur lining, size 10/12 as new	£25ono	811783
Airbrush kit with compressor and braided extension airline as new, never used.	£30ono	811402



**BOTTISHAM  
MEETING POINT**

every  
**WEDNESDAY**  
10.30am - noon

in The Poppy Lounge  
at The Legion

A place where you can meet old friends, make new friendships, relax, chat and enjoy coffee, cake and biscuits in a friendly relaxed atmosphere.

**EVERYONE WELCOME**

**ADMISSION FREE**

## Grants for Landlords in Cambridgeshire

- from your Local Authority!



For insulation plus a choice of 24 other energy saving measures from boilers to windows!

For full details go to [www.actionenergy.net](http://www.actionenergy.net) or call 0800 093 3303 quoting reference LL3



## Lode Sports Injury Practice



*Treatments for sports injuries and painful muscular & skeletal conditions*

A fully qualified sports massage practitioner based in Lode. Treatment is not exclusively for sportsmen and sportswomen

Treatment is priced at: - £25 for 30 minutes - £45 for 1 hour  
**Special introductory offer available.**

Web [www.karenabouzar.co.uk](http://www.karenabouzar.co.uk) Email [karenabouzar@hotmail.co.uk](mailto:karenabouzar@hotmail.co.uk)  
Tel :- 07872 499209

## Thoughts of a Sports Nut

While most of us have been waiting for the meteorological summer to begin, I must say that we have been served up a bountiful season of sport in the last couple of months.

The Tour de France, for instance, was an absolute epic, and the resulting victory of Chris Froome supported by the tenacious Sky team, was the third English triumph in four years! Oh, how the French hated that! And oh, how they tried to undermine the validity of that effort, with their smears and innuendos about chemical assistance. In this respect, 2015 has got to have been the cleanest Tour in living memory and it was heartwarming to see our boys treat the naysayers with the contempt they deserve and maintain a dignified, respectful – yes, British – stance throughout. (What a shame other sports have not been as robust as cycling in eradicating the drugs cheats.)

Froome did the damage - both to his opponents and to his place in French affections - with a blistering attack in the first day in the Pyrenees on Stage 10. I remember writing in my nerdy private notes on the day "Tour won today?" Well it was, but the drama of Sky defending their leader's advantage for the remaining week and a half, was a nail biting tale of repeated attacks by the teams of his rivals, culminating in an incredibly plucky two-day offensive by the Colombian Quintana who clawed back half his lost time to finish a close second with Froome on his knees. Thus, Brailsford's team of outstanding talent, relentless training and marginal gains - not to mention Geraint Thomas, who survived a 'head-on' collision with a telegraph pole on Stage 16 - prevailed again. Incidentally, I might add that although I have no axe to grind with Quintana's honesty, I find it ironic that he can scoot up the steepest mountains two days running without a hint of criticism, whilst our lad had poison (not to mention punches, spit and urine) raining down on him for a single day's effort.

There were times during the Tour when the armchair sportsmen - er, sportspeople - had to multi-task as the main event of the cricketing year took shape! Having rescued some of our confidence in the entertaining mini-series against the Kiwis, England launched into a rollicking Ashes campaign with a conviction that surprised everyone, including the hapless Aussies. With Root in imperious form, England simply outscored the visitors in Cardiff to go one up. But we all know how dangerous a wounded animal can be and, true to type, Australia leveled the series with a 405 run thrashing of the equally clueless England. Then it was England's turn to bounce back. In front of an effervescent crowd at Edgbaston, first Broad, then Finn turned the screw on the Aussie batsmen, leaving Bell (possibly saving his test career) and Root to mop up the runs for a 2-1 series lead.

At the time of writing, it remains to be seen whether England prolong their bizarre sequence of alternating win/lose Test match results – seven matches so far – but, whatever the outcome of the series, it's a spectacular advertisement for Test cricket. Some would question the quality of the batting and bowling alike and some would even suggest a reduction to four day tests if the players cannot make four innings last. Whoever heard of 5 runs an over at this level and matches completed in three days? But I say, live for the moment; the name of the game is 'Entertainment', and so far, it's breathtaking!

In fact, it's just what we need isn't it? Something to inspire us and give us the impetus to give sport a go? We've heard a lot recently about the failure of the 2012 Olympics to create a legacy of increased participation and all the media men are jamming the airwaves speculating as to why sports have failed to engage with today's participants. Even the nation's favourite activities like swimming (yes - that's our number one apparently!) and football are suffering a mortal decline. We hear that sports are selling the next generation short by not offering sufficient opportunities or adequate facilities. "Build a new pool/court/pavilion/stadium: people will come..." But will they? They didn't in Lode. (*Sports Nut continued on page 45.*)

# Bottisham

## Post Office and Village Stores

12 High Street Bottisham Cambridge CB25 9DA  
Tel: 01223 811281 PO Tel: 01223 812863

Shop opening: 5.30am-8pm 7 days  
Post Office: 9am-5.30pm Sat 9am-12.30pm

### Your All-in-One Shop

Groceries, chilled & frozen food, delicatessen, confectionery, off-licence, haberdashery, household, healthcare, stationery and greeting cards.

Free local delivery of grocery orders

TV licence, Top-ups, elec/gas keys/tokens, money transfer, phone cards, congestion charges.

Newsagency with home delivery to Bottisham, Lode, Longmeadow, Quy, Six Mile Bottom and Swaffham Bulbeck. Dry Cleaning & Floral Service

### FREE TO USE ATM MACHINE

Vehicle Licences • Personal Banking • Foreign Exchange  
Phone Cards & Mobile Top-Ups • On-line Lottery.

## Rothwell's Carpet Cleaning

**Thorough, professional cleaning of Carpets, Upholstery, Rugs, Tile & Grout and Natural Stone floors.**

- 'Truck mount' cleaning system
- Family firm est 1993
- Great customer service
- We move all the furniture
- Fully Insured
- Highly trained & experienced
- **100% satisfaction or its free**

*If you use us,  
you'll recommend us!*



For a quote  
or advice please  
**07545 962 026**  
**01223 832 928**  
[www.rothwells.biz](http://www.rothwells.biz)

*(Sports Nut continued.)*

Could it be that the obstacles are far more powerful than the commentators think? Surely they are more cultural than anything. And culture is about people, is it not? What participants need is people to lead them, people to set an example and people to inspire them to be the best they can be. But successive generations have found easier ways to have fun. They have drifted into a technological age of instant thrills for least effort, together with saturation coverage of broken role models who are a million miles removed from the kid in the street.

Have a look locally. We are now a village of what - 2300 or thereabouts? What is everyone doing? You'd think the open spaces for which we clamour would be hives of activity? Why are the greens at Ox Meadow, Ancient Meadows, the Dirt Hills and BVC playing field almost always empty? It's about time folks of all ages stopped asking what sport can do for them and start thinking what they can do for sport.

*TTFN - Gerry Daish*

## WEA

Our course for the Autumn Term will commence on the Thursday 24th September at the Royal British Legion at 10.00am. Members and anyone else wishing to join us will be welcome and introduced to "**Russians and the Russian Culture in the USSR**" by **Marina Burrell**, a native Russian who will be sharing with us her experience of living, studying and working in the USSR and the Estonian Soviet Republic during the "Cold War" period. She will also be introducing us to their lifestyle and culture, including art, cinema, pop-culture and the Russian Language.

The Spring Term will commence on Thursday 7th January 2016. Entitled "**A Brave New World?**" **Wendy Barnes** will be exploring all the difficulties facing the English in 17th Century Virginia.

Should you wish to book a place or require any further information on either of these courses please do not hesitate to contact Shirley Ellis on 01223 811 891.

If you would like to do additional courses or do not fancy our topics, details of other courses available in the area can be found in the WEA brochure available from Bottisham Library or on the WEA website at [www.eastern.wea.org.uk](http://www.eastern.wea.org.uk)

*Gerry Cowley*



CAMBRIDGESHIRE  
FIRE & RESCUE SERVICE  
[www.cambridgeshire.gov.uk](http://www.cambridgeshire.gov.uk)



### Alarms 4 Life for Landlords

LANDLORDS of privately rented properties in Cambridgeshire can pick up free smoke and carbon monoxide alarms at forthcoming distribution events. New safety laws will make it compulsory for all landlords to fit, or have fitted, smoke alarms in rented homes. These laws, currently subject to Parliamentary approval, are expected to come into effect from October 2015. Under the new laws, smoke alarms **must** be fitted on **every** floor of each and every relevant property. Additionally, carbon monoxide alarms must also be fitted in properties where solid fuels are burnt.

Cambridgeshire Fire and Rescue Service has a limited number of free alarms to distribute to relevant landlords and will be doing so at distribution events at its fire stations on the first

*(CF&RS continued on page 46.)*



(CF&RS continued on page 46.)

Mondays of July, August and September. For full details of dates and where alarms may be available for collection please log on to [www.cambsfire.gov.uk/firesafety/alarms4life.php](http://www.cambsfire.gov.uk/firesafety/alarms4life.php)

TENNANTS of privately rented properties – please ensure your home is fully protected. Ask your landlord if you do not have suitable working alarms. For owner/occupier and rented properties – keep testing – that alarm may save lives.

Follow us on Facebook, Twitter and Instagram for the latest news and updates.

Michael White



## Bottisham Early Morning Swimming Club


A new club has recently been formed since the week-day closure of the pool and we are seeking new members.

We currently open from 0645 to 0830 hrs.  
2 days a week and plan to increase to 5.

For more details please contact: Colin Marshall - Secretary  
Tel. 01223-847047 E-mail: [colinm@btinternet.com](mailto:colinm@btinternet.com)

### STEPWISE FOOTCARE

Vivien Honeyborne-Martins  
MA(Camb) BSc(Hons) MCPS HPC Registered



#### Clinic-based Chiropody/Podiatry

- Chiropody
- Biomechanical assessment
- Insole/orthotic therapy
- Children's foot problems

7 Swaffham Road,  
Burwell,  
Cambridge,  
CB25 0AN

Tel: 01638 741973 / Mobile 07980 286876  
[stepwise-footcare.co.uk](http://stepwise-footcare.co.uk) [vrmpost@hotmail.com](mailto:vrmpost@hotmail.com)

# Jasmine

Chinese & Thai Food to Take Away

Telephone  
**01223 811642**

Fish & Chips also Available

**OPENING HOURS**  
Tuesday to Thursday 4.30pm-10.00pm.  
Friday and Saturday 4.30pm-10.30pm.  
Sunday 4.30pm-10.00pm

OPEN AS USUAL ON BANK HOLIDAYS

2 HIGH STREET • BOTTISHAM •  
CAMBRIDGE CB25 9DQ

## LOCAL ELECTRICIAN

### Bottisham based 20+ years experience

All domestic work undertaken:

- ❑ Rewires
- ❑ Lighting
- ❑ Burglar alarms
- ❑ Security lighting

Free quotations, NICEIC registered

Power Control Panels, est. 1969  
TELEPHONE 01223 212 054



**spoton**  
BODYWORK

### PAINT SCRATCHES BUMPER SCUFFS DENTS ALLOY WHEELS

Save your no-claims bonus,  
by calling us direct.

For a free estimate  
**07796 231414**  
**01284 811236**

We come to you.  
[www.spotonbodywork.co.uk](http://www.spotonbodywork.co.uk)



## WHITSTABLE Kent Coast

Three bedroomed  
Victorian Terrace available for  
self-catering holidays

Situated in the heart of the  
conservation area  
two minutes stroll from shops,  
restaurants, beach  
and the harbour

Phone 811447  
[dawnrahman1@hotmail.com](mailto:dawnrahman1@hotmail.com)

### BED AND BREAKFAST THE MEADOW HOUSE

2A High Street, Burwell,  
Cambridge. CB25 0HB



- En-suite rooms with colour TV.
- Large car park and grounds.
- Family rooms, children welcome.
- English Tourist Board 4 Diamonds.

Self catering cottage also available  
at Swaffham Prior.

Brian and Hilary Marsh  
Tel: 01638 741926  
Fax: 01638 741861  
Website: [www.themeadowhouse.co.uk](http://www.themeadowhouse.co.uk)

**jaze accountancy limited**

Management Accounts  
 Statutory Accounts  
 Bookkeeping  
 Payroll  
 CIS  
 VAT  
 Personal Tax  
 Corporation Tax  
 Accountancy Systems  
 Company Secretarial Services

Competitive rates to save you time and money  
**Call Julie on 07801 735012**  
 or  
 e-mail: [books@jazeaccountancy.co.uk](mailto:books@jazeaccountancy.co.uk)  
[www.jazeaccountancy.co.uk](http://www.jazeaccountancy.co.uk)  
Julie Stearn is a Fellow Member of the Association of Accounting Technicians

**footprint**  
 Signs & Graphics

The Complete Local Signmaking Service

- All aspects of Vehicle Signage
- Window Graphics & Etching
- Safety Signs
- Shop Fascia's
- Labels, Stickers & Magnetic's
- A-Boards
- Banners
- Full Colour Digital Printing
- Solar Films & Etched Vinyl

Have you a picture you would like on Canvas?  
**07900 606400**  
**01223 214294**  
[www.footprintsignsandgraphics.com](http://www.footprintsignsandgraphics.com)  
[info@footprintsignsandgraphics.com](mailto:info@footprintsignsandgraphics.com)

**Jolley Old World**

**Onward and Upward...**

I trust you all had a good summer break either at home or abroad, or even both if you were lucky. And took time out to share it especially with family and friends – where would we be without them! But sadly as I write this piece I've just received a poignant phone call from Tony Newman's daughter to say that Tony slipped away in the early hours of this morning - Wednesday 12th August 2015.

I was fortunate and privileged to have had a few chats with Tony about the history of the village and about the role the Newman's had and still have in the life of this community. Listening to how others spoke of him and from my own experience Tony was beyond measure the quintessential English 'gentleman' farmer who devoted many years of public service to Bottisham and, I'm sure, to the immense gratitude of villagers past and present. Coincidentally it was through talking with Tony that the idea of a renaissance of Bottisham village traditions was talked about and out of these tête-à-têtes the 'Bottisham Forum/Society' seed was planted.

Well, your opportunity to submit your responses to the 'survey' came to an end in June and so it's a big thanks to those of you who took the trouble to offer some very constructive comments and observations. Not a vast response by any means but at least a refreshing 'can do' attitude came through with a number expressing their frustration at what other villages around us are able to accomplish.

The interest shown and comments offered suggest to me that it would be appropriate to take the idea of a 'Forum or Society' to the next stage. This proposed step would be to meet with all those who expressed a willingness to help grow the concept; the idea being to consider the benefits such an enterprise would bring to the village and how collectively we might take bring this scheme to fruition. But before a get-together of interested parties can be planned I would appreciate having some contact details for you. Therefore please email me so that I can update you; [burytenor@gmail.com](mailto:burytenor@gmail.com) or alternatively leave a message on 812911.

As I have mentioned in previous articles; it seems that much needs to be accomplished if we are to stand any chance of closer communal involvement in community events and activities. Playing its part in mid twentieth century history has dealt Bottisham a cruel blow that has left the village devoid of benefactors and without a feeling of 'villageness' once enjoyed by previous generations – the sort of 'villagey' things that seem commonplace elsewhere. Yes, hindsight is a wonderful thing and looking back in time it was perhaps naïve of our forebears to have had faith in 'gentlemen's agreements' and in 'reciprocal arrangements' for, although officially recorded, these have all now been conveniently forgotten by successive local government and educational administrations. Personally I don't hold with the 'progressive' view that we are now a secular society and thus should let go of our traditions and folklore. A new and just balance must somehow be found to claw back what has been involuntarily forfeited...

But now to a topic that will have considerable ramifications for this village if it ever gets approval. Some may have read about or heard of a proposal to introduce a Cambridge Congestion Charge during commuting hours - the idea being to 'force' people out of their cars onto bicycles or onto public transport. I don't know about you but I always marvel at how accessible Cambridge is by car during peak hours when the City schools are on holiday! This one simple fact alone suggests commuters' cars are not the real problem here...

What seems to have been naively forgotten in this debate is that Cambridge's economy serves and is served by people other than those who live in the City of Cambridge. Unless Cambridge can provide an efficient, reliable and affordable rural (*Jolley Old World continued on page 50.*)

**TIM PHILLIPS**  
**& Co.**  
**Accountants**

Independent, specialist service for:  
**Small Business • Self Assessment**  
**Personal Taxation**

Free initial consultation – no obligation  
**EASY, FREE PARKING**

Copley Hill Business Park, Cambridge Rd., Babraham  
 Off A1307 between Wandlebury and Babraham  
**Tel: 01223 830044. [www.tpaccounts.co.uk](http://www.tpaccounts.co.uk)**

and urban public transport infrastructure Cambridge's economy will falter and furthermore you will not persuade motorists out of their cars. For goodness sake, it's cheaper to drive four people into Cambridge and park than to use Park & Ride. The millions being spent on the Huntingdon Road for a tiny section of the City's population and the millions proposed to be spent on the 'City Deal' are beyond a joke. Surely it's obvious that traffic congestion in Cambridge is the result of over engineering accompanied by an unhealthy bias in favour of the City cycling lobby. At a time of austerity these 'nice to have' initiatives continue to appear unabated whilst the 'must have' needs of hard pressed community services are being deprived of basic cash. Install as many cycle lanes, road narrowing schemes and traffic lights as you like – they will only continue to make the congestion problem worse. Can you remember the uncomplicated yet exceptionally effective 'tractor tyre' in the middle of the road serving as a mini roundabout! I'm sure Will Newman has one or two he can surreptitiously place at particular junctions in the village!

I'm no transport expert but at the risk of being accused of unoriginality might I suggest a 'radical' rethink on transport rather than the current narrow-minded approach such as the 'City Deal' adopted by local politicians and planners. Smarter rationality; as exemplified by CambridgeBOLD, linking outlying towns and villages with Cambridge's commuting infrastructure involving the reintroduction of branch lines, tram networks, possibly a metro system, and a 'standalone' cycle grid (one that doesn't spill over onto the road network) must all go into the melting pot. To my mind we should also include reducing A14 traffic by using other transport options. Perhaps John Austin has some views he might like to share? The repetitive diatribe from a particular Cambridge business leader (so called) about the road being 'unfit for purpose' is becoming rather banal. And now we have a new Cambridge MP but we read that he too is a massive 'cycling' supporter. When will Cambridge get some respite and a chance to effect some damage limitation? *TJ*

*"Every blade of Bottisham grass built upon is another bit of England lost"* Anon.

**Copy deadline for the next issue is 14 September.**

*Please send material to the editor at [cresset@bottishampc.org.uk](mailto:cresset@bottishampc.org.uk)*

## **D.K.TILL & SON IN LAW**

### **COAL AND SOLID FUEL MERCHANTS**

**Family run business for 40 years**  
**Coal, Logs, Charcoal, Gas, Compost**

**TEL: David Till; 01223 232947 - Kevin Crisp; 07523044521**  
**Email: [dktil@hotmail.co.uk](mailto:dktil@hotmail.co.uk)**

**Red Bucket Appeal:** We will be purchasing a child pulse oximeter (an external device for measuring blood oxygen saturation) for the Practice and will then fundraise to provide another 24 hour ABPM as the first one, provided by a patient following an appeal by the Patients' Group, is well used and there is a waiting list, such is the demand!

**Staff:** Dr Kubacka and Dr Sanderson have been contracted for 12 months to cover the maternity leave of Dr McGrath and Dr Thijskens. Carol Miles has recently been appointed as practice nurse and you may see a new face on reception; Laura is providing maternity leave cover for approximately 9 months.

**Flu Clinics:** These will take place during the mornings of Saturdays 17th and 31st October 2015. Members of the Patients' Group will be on hand to assist and will have a tombola for the Red Bucket Appeal. If you would like to donate a prize or help on the day please contact our Chairman Steve Gilson on 01223 811021.

**Surgery Closure:** The surgery will be closed from 1pm on Thursdays 17th September and 26th November for training and clinical governance purposes. Patients will need to contact the Out of Hours service during these times, if their need is urgent.

**Skin Cancer:** Sadly there are over 100,000 new cases of all skin cancers diagnosed in the UK each year and the rate of the most dangerous, malignant melanoma, is rising faster than any other type of common cancer, and is also affecting 15 -34 year olds. Protection in the form of high factor sunscreen against UVA and UVB, keeping in the shade on sunny days between 11am – 3pm and wearing a sun hat and clothing to protect the skin are all ways to help prevent this disease. For further helpful information see website [www.ittakesseven.org.uk/skin-cancer-facts](http://www.ittakesseven.org.uk/skin-cancer-facts)

**Blood Donation:** There is a national shortage of blood donors so if you can help by becoming a donor for further information see website [www.blood.co.uk](http://www.blood.co.uk) or ring 03001 232323 for details of giving blood locally. Someone, somewhere, will be thankful you did.

**Carers:** Carers are people who, without payment, provide help and support to a family member, friend or neighbour who cannot manage on their own due to physical or mental illness, disability, substance misuse or frailty brought on by old age. Caring roles can include administering medication, lifting and handling, personal or emotional care. Please contact the surgery if you are a carer; the surgery will endeavour to assist you as much as they can and signpost you to supporting organisations.

Carers can also contact Carers Trust Cambridgeshire and receive a free newsletter via email. This can be accessed by logging into: [www.carerstrustcambridgeshire.org](http://www.carerstrustcambridgeshire.org) or telephone 01480 499055.

**Walks:** The next walks with our accredited walk leader Steve Gilson start at 11.00 am from the surgery car park on 4th and 30th September, 14th and 30th October, 13th and 25th November and 11th December. Anglesey Abbey walks continue on Thursdays at 10am from the reception area.

**Next Meetings:** The committee will meet on 24th September and 19th November at 6.30pm at Downing Court, Swaffham Bulbeck. Come along if you would like to join us.

*Bottisham Patients' Group Committee*

## Need glasses?

### Save money, buy direct

(Frame & lenses) Single vision from only £9\*

- ~ Bifocals from £39\* – Varifocal from £59\*
- ~ Prescription Sunglasses from £49\*
- ~ Specs repairs & emergency supply\*
- ~ Reglaze your own specs save ££
- ~ Premium specs at internet prices
- ~ Excellent customer service
- ~ FREE NHS glasses; specs for all sports/trades



**SAVE UP TO 75%** – Especially on high/complex prescription:

**ALL EYES Specs Makers** ([www.all-eyes.co.uk](http://www.all-eyes.co.uk))

20 Norman Way Ind. Park, Over, Cambridge CB24 5QE

**Tel: 01954 231545 07824 706969**

Opening hours: Mon - Fri (9am - 5pm)

\*T & C's apply; for customers aged 18 and over only (Please ring for an appointment)

Copy deadline for the next issue is 14 September.

Please send material to the editor at [cresset@bottishamvc.org.uk](mailto:cresset@bottishamvc.org.uk)



## BOTTISHAM VILLAGE COLLEGE

### Adult and Community Learning

ENROL NOW FOR COURSES STARTING IN THE AUTUMN

You can enrol at any time by visiting our website, or come along to the Community Office to enrol on **Tuesday, 8 September, 7.00-9.00pm**

All courses are listed on our website, but NEW courses include:

**Art from History of Art / Baking for Christmas / British Sign Language  
Cake Decorating / Calligraphy / Feltmaking / Mediterranean Cookery  
Singing for Fun / Tai Chi**

Saturday Workshops include:

**Cook with your Kids (parent plus child) / Flowers for Christmas  
Indian Street Food (cookery) / Make a Stained Glass Suncatcher  
Make an A-line Skirt in a Day / Website in a Day / Wedding Flowers  
Willow Weaving – Willow Baskets or Plant Climbers**

For further details visit: [www.bottishamvc.org/adultlearning](http://www.bottishamvc.org/adultlearning)

**Tel: 01223 811372 email: [adultlearning@bottishamvc.org](mailto:adultlearning@bottishamvc.org)**

Facebook: [BottishamAdultCommunityLearning](https://www.facebook.com/BottishamAdultCommunityLearning) or Twitter: [@CommunityEdBott](https://twitter.com/CommunityEdBott)



## Anglesey Group Mothers' Union

In July we invited members from our link branch at Impington to join us. Our guest speaker Libby Aluwahlia, Chairperson of The Friends of Whitworth House came to tell us more about the charity which is supported by Ely Diocese Mothers' Union. Whitworth House was opened in

1998 after a major fundraising appeal to provide a home for homeless young women aged 16-25. The House provides a home for fifteen young women. The accommodation has twelve small units and an extension of two small flats which provide moving on accommodation before moving out to independent living. Today the day-to-day running of the house is managed by the Orwell Housing Association. The Friends of Whitworth House serves to support residents in the absence of any other existing agency. This can involve grants for transport, work clothes, education and training, amongst other things. It also provides items to make living units more homely such as bed linen and table lamps, as well as personal items and toiletries. The Friends also ensure that each occupant receives a present at Christmas. This very worthwhile charity is run by a very small committee of four members. They have almost achieved their latest project target to obtain a mini-bus which will provide transport for outings. Members made a collection during tea and presented Libby with over £50 that will go towards licence fees for the vehicle. For more information please visit their website: [www.friendsofwhitworthhouse.org](http://www.friendsofwhitworthhouse.org).

Our meetings usually take place on the third Thursday of each month starting at 2.30 at Lode Chapel. On September 17th Ruth Pym is coming to talk to us on "Fine Cell Work". You are most welcome to come along and join us.

*Ann Langran*

## Bottisham Community Library Association

We are so pleased that our Saturday Morning Art Club can continue. Liz Cook and a friend have volunteered to jointly run it. We hope they enjoy it and that the members enjoy it too. Kate Vadhia and her helpers Indy Vadhia and Ashleigh Leech were presented with vouchers at our recent AGM for running the Club so well for the last four and a half years.

The committee and all volunteers were thanked by Jill Terrell from Cambridgeshire Library Service who spoke at the AGM. Our statistics are good and contrary to belief the advent of e-books has not replaced the physical book. The value of the Library Service is recognized throughout the County but the service is looking to save 40% next year!

The AGM was well attended – finances have been helped by a successful Jumble Sale and a Quiz Night in January (we hope to hold another one) and we have been fortunate in having several people come forward as volunteers during the last year

The National Library Service Summer Reading Scheme entitled "Record Breakers" continues to run until late September. Several young readers have joined and those successful in reading at least 6 books will receive medals later in the month.

We have many new books, the Biographies are now more accessible and we are one of the few volunteer run Libraries that can offer non-fiction titles as we are based in the College Library.

Come to the Library, browse and borrow and help make sure it is there tomorrow.

*Sylvia Overton*

# REFLEXOLOGY

For Health and Vitality

Reflexology has been  
an effective treatment for:

- Migraine • Back Pain • Infertility • Arthritis
- Sleep Disorders • Hormonal Disorders (Including PMT) • Sports Injuries • Digestive Disorders • Relaxation • Stress Related Conditions (exams,work,home,life) • Little people in nappies! (BabyFlex) • Men and Women, young and old.

**Jennie A Fatibene** MAR MBFVEA

Tel: 01223 811045

or 07821 611315

\*\* Gift vouchers available \*\*

[www.alecslearn2drive.co.uk](http://www.alecslearn2drive.co.uk)



# ARCHITECTURAL DRAWINGS

FOR

PLANNING & BUILDING REGULATION APPLICATIONS  
NEW PROPERTIES, EXTENSIONS, LOFT CONVERSIONS ETC

CONTACT US now to arrange a FREE on-site meeting at your  
convenience to discuss your project.

**ELY DESIGN GROUP**  
*'Architecture by Professionals'*

[www.elydesigngroup.co.uk](http://www.elydesigngroup.co.uk)

01353 649649

[mail@elydesigngroup.co.uk](mailto:mail@elydesigngroup.co.uk)

**CHRIS CLARKE**  
Hairdressing

Phone 01223

**811966**

for an appointment.


## Morgans Hairdressers

*Creative styling for all the family*

Tel: 01223 811646

Creative cutting  
Colouring  
Perming  
Hair up  
Bridal packages  
Gelish nails

Manicure &  
pedicures  
Facial waxing  
Eyebrow/lash  
tinting & shaping  
Mink eyelash  
extentions

 Open: Tuesday - Saturday, Wednesday until 8:00pm  
10 Herschel Court, High Street, Bottisham, CB5 9QQ

[www.morgansbottisham.co.uk](http://www.morgansbottisham.co.uk)

## JEFFREY D. WICK

PAINTER / DECORATOR

INTERIOR / EXTERIOR

30 YEARS EXPERIENCE

FREE ESTIMATES

OAP Discount

Reliable & Professional service

Phone: 01223 813762

Mobile: 07788 165676

11 Heath Road  
Swaffham Bulbeck  
Cambridge  
CB25 0LS

## N & G Marsh of Burwell

Engineers

For all your metalwork requirements

- ❖ Welding Services
- ❖ Handrails
- ❖ Security Bars
- ❖ Gates
- ❖ Mower Repairs
- ❖ Tow bars
- ❖ Metal Railings
- ❖ RSJs Supplies

Services to the Building Industry  
Tractors & Agricultural Machinery  
Repaired

Tel: 01638 741354 or 741 926



**JANE NEWBURY** AISTD(CB)  
**SCHOOL of DANCING** Ex Royal Ballet

Dance classes in Swaffham Bulbeck School Hall

Mondays

Nursery Movement 3.00-3.30pm  
 Junior Ballet 3.45-4.15pm  
 Junior Tap 4.15-4.45pm  
 Intermediate Ballet 4.45-5.15pm  
 Senior Tap 5.15-5.45pm  
 Senior Ballet 5.45-6.30pm  
 Ladies Ballet 6.30-7.30pm

Wednesdays

Dance Club for Teenagers 6.00-7.30pm

Website : [www.newburysdance.co.uk](http://www.newburysdance.co.uk)  
 email :- [jane@newburysdance.co.uk](mailto:jane@newburysdance.co.uk)  
 Tel:- 01223 812154

Classes also available in Burwell on Thursdays

...all that  
**JAZZ** and Tap  
 and ballet  
 and theatre  
 and gym

**SPLITZ** Arts  
 Theatre

Dance classes for all children at the Fulbourn centre  
 Tots Tap, Ballet and NEW Tumbletastics 2-5 year olds  
 Junior, intermediate and senior classes in Ballet, Tap, Jazz and Gym.  
 IDTA Exams taken.  
 To apply for a free taster session and prospectus  
 Tel. 01638 577095  
 Mobile. 07941289648  
 Email. [clare@splitz-ta.net](mailto:clare@splitz-ta.net)  
[www.splitz-ta.net](http://www.splitz-ta.net)

***Bottisham & Burwell Photographic Club***

The club will be commencing its 43rd year on 8 September 2015 7:30pm at Lode Chapel CB25 9EW. This evening, as with all our meetings, new members are welcome to attend and bring some prints taken in the summer (any size). Current members are asked to bring 3 prints or digital images that they have taken during the summer for viewing. Last year's award winning prints will also be displayed.

If you are new to photography or would like to develop your knowledge further, why not try our club? This may help you to achieve your aims and have an enjoyable evening, at our comfortable venue. Members use a wide range of cameras to take their photographs— DLSR's, Smartphones, Mirrorless and Compacts. They also have a very wide range of experience over a number of years and can offer guidance to newcomers.

Early next year the club is supporting a new venture in which club members will be asked to donate photographs to the long running Burwell Community Print Centre (Registered Charity No.1053026). Hopefully this will enable the charity to raise additional funds to support their valuable work for people with learning disabilities. Further details to follow later in the year.

Our programme for the year 2015/16 is wide and varied, which is always our aim. The initial programme will be:

**Tuesday 8 September;** *See above.*

**Tuesday 15 September;** Permajet Colour Management Presentation by Ian Windebank from The Imaging Warehouse, Stratford-upon-Avon. During this evening, monitor and printer profiling will be discussed along with Permajet papers and their uses.

**Tuesday 22 September;** 'Taken on the Club Outing'. A new competition for this year— 'The Metcalfe Trophy' donated by Gerry Metcalfe DPAGB, who has been Chairman for the past ten years. The competition is to consist of four projected digital images taken on the day of the annual club outing.

Further details of our programme for the year can be viewed at, [www.bottburpc.org](http://www.bottburpc.org)

The club welcomes guests to any meeting at our venue, Lode Chapel **CB25 9EW** from 7:30 – 9:30pm. Fee £3.00 including refreshments, refunded on joining. Annual subs: Adult: £40.00, Joint Membership: £67.00, Student: £21.00. Refreshments 50p.

For further details contact: Hon. Secretary. **Mrs Daphne Hanson** T: 01638 741106

BOTTISHAM COMMUNITY LIBRARY ASSOCIATION  
**SATURDAY MORNING ART CLUB**

The Library Association is looking for 1 or 2 volunteers with experience of working with children to run the thriving Art Club from September.

Our well established Art Club has been running for the last ten years every Saturday morning during term time from 10.15-11.15. It is held in Bottisham Library for children aged 4-10 years.

If you are interested please contact:  
 Valerie Leake 01223 811324 or Helen Cole 01223 812573 for further details.

## **LODE HALF MARATHON & 3 MILE FAMILY FUN RUN**

(AFC Race Permit No. 15/294)

### **\*\* NEW FOR 2015 HALF MARATHON – ONLINE ENTRY & CHIP TIMING \*\***

The 5<sup>TH</sup> Lode Half Marathon is fast approaching and this year our charity is the National Kidney Federation (charity no. 1106735). Over the last 4 years we have had great support and raised over £11000 for charity and local causes.

**ENTRY is now open** so if you are a runner please get your entry in as soon as possible. If you are not a runner but would like to help with **stewarding** please get in touch.

It is being held on **Sunday 1st November 2015** at 10 a.m. - our race HQ is the Passage Hall in Lode. The Family Fun Run will start at 10.15 a.m.

The course is flat and takes you from Lode village, along the "Lodes Way" to Wicken Fen and back, with water stations along the way. Trophies will be awarded and each runner who completes the course will receive a medal. (see our website for further details - [www.loderunners.co.uk](http://www.loderunners.co.uk) or contact Tessa Shrubbs on 01223 811812 or email: [lodefarm@aol.com](mailto:lodefarm@aol.com))

Many thanks to the following companies who are sponsoring this year's event:  
**Mead Construction & Plant Hire**, Swafham Prior, **Iceni Water**, Duxford  
and **SAB**, the property specialists.

## **MOBILE FOOT HEALTH PRACTITIONER**

For professional treatment of ALL foot conditions including:

- Toe nails trimmed & filed
- Corns and hard skin removal
- Ingrowing toe nails
- Athletes foot & fungal nail infection
- Verrucas & warts



For an appointment in the comfort of your own home contact:

**HELEN BRATTEN, MCFHP, MAFHP**  
Tel... 01638 724865 or 07776 172056

Member of the British Association of Foot Health Professionals

## **Bottisham WI**

We have had 2 meetings since I last wrote a report.

In June Sarah Oliver a Lady Plumber entertained us with a talk on Beating the Cistern explaining the water and drainage systems in our homes. She had trained once her children started school and was 1 of only 20 females doing this job. She gave us many tips – the most important one was to turn the stopcock tap every 3 months to stop it seizing up, WD40 or olive oil would loosen it. The outside water tap must be turned off in the winter months in case we have a severe winter.

In July we had a talk on EMMAUS by Selwyn Image one of the Founder members of the Charity based at Landbeach. the first in the UK. The charity began in France after the Second World War by Abbe Pierre who cared for homeless and impoverished people in his own home. When the French Parliament reduced the rough sleeping allowance and a lady was found dead in the street in the freezing winter with an eviction notice in her hand he appealed for funding in a radio broadcast and the Charity was formed. Selwyn went to work in 1960 in one of the branches mainly to improve his French.

In 1989 beggars appeared in the streets of Cambridge and soup kitchens opened. A beggar who was a graduate told him that "he needed somewhere he belonged, some meaningful work and his self respect back" so Selwyn with others including the Lord Mayor George Reid decided to do something. They purchased a field with cowsheds for £45,000 at Landbeach from the County Council and have never looked back. Accommodation was built and items from house clearance sales were collected and repaired as necessary and sold. There are now 25 communities in Britain which are all economically viable and profits are passed on to promote new communities. It is a non secular international organisation but they have yet to be set up in the USA where 25% of the population are below the poverty line. This was a most interesting talk. Do visit the shop— the cafe is known for its large pieces of cake

We have recently had a most interesting tour of the American War Cemetery at Madingley and a walk through Bottisham Park with a meal at The Black Horse .

We are looking forward to Afternoon Tea at Bottisham Hall (by kind permission of Jill and Roger Jenyns) on 19th September to celebrate the Centenary of the WI, our shopping trip to Norwich in November and a Christmas Meal in December at Newmarket Golf Club

The darts team played really well, winning the Cambridgeshire Federation quarter final and semi final matches against Chrishall and Wimpole respectively. Unfortunately our team lost in the final against Cottenham. Although the score was 2-0 it was a close match and could have gone either way. The Cambridge News gave good coverage of the event held at the Royal British Legion in Bottisham. We shall keep practising and try again next season!

Malcolm Busby will be Telling Cambridgeshire Tales on 15th September at 7.30pm in the College Lecture Room.

Please think about joining the WI. Come as a visitor and see what you think. We are a friendly group of women with varying interests and backgrounds who support and encourage one another, learn new things, help the local community and have fun while doing it!

*Sylvia Overton*

**Copy deadline for next issue is 14 September.**

Please send material to the editor at [cresset@bottishampc.org.uk](mailto:cresset@bottishampc.org.uk)

## Public Transport Matters

I hope you have all had a good summer with convenient public transport as required. People are complaining about the use of self-service ticket machines at railway stations. I prefer direct contact and we have recently had an extremely efficient - and surprising - experience with Voyages SNCF (0844 848 5848 voyages-sncf.com) for a short visit to central France. I explained that we wanted to go to Poitiers via Lille using Eurostar from St. Pancras and then their TGV trains to Poitiers. She checked through the times that I had already researched and then said that she could do a round trip fare which would involve keeping all the tickets together. She then laughed and said was it OK to return from Poitiers to Lille Europe First Class as that was the cheapest option – we thought that was indeed OK. I usually use Deutsche Bahn for our German trips as the national railways know all the special deals. The only snag was that on our way to Poitiers we had to change at Lille Europe and walk through to Lille Flandres – about 15 mins. at our pace. Returning from Poitiers 3 days later we enjoyed the First Class comfort but the train was slightly late but did go direct to Lille Europe. As we alighted, 2 chaps in red sweaters, who were helping a lady in a wheelchair, saw that we weren't the most agile couple, commandeered a luggage trolley and said to follow them. My husband is not too keen on handing over responsibility to young men and when one of them asked for our Eurostar tickets at the Eurostar entrance and then disappeared he suggested they were now being handed to some immigrants! However, the chap reappeared with our tickets and a little Eurostar Assistance form and promptly ushered us to the head of both the passport check queues and through customs. We were then handed over to a young woman at our carriage and shown to our seats. Then a chap with a tiered trolley appeared and started handing out 'plats du jour', bottles of water and tea or coffee – all gratis! I checked with the company later and it turned out that we had had a higher grade of ticket on Eurostar as part of the deal. We were met at St. Pancras and escorted to King's Cross, where a very organised chap took over, when I enquired at Information, and got us seats on the already nearly full 19.14 commuter train by requesting that two young men vacate theirs! Kind fellow travellers offered to help us to a taxi at Cambridge but by then we were quite happy to potter along at our own pace! Quite an interesting day! We were not affected by the Calais problems. Eurostar are threatening to sue for £200 million if the govt. decide to close the tunnel overnight due to the threat from the immigrants. They have had a record quarter this summer carrying 2.8 million passengers in the three months to the end of June - its highest ever in one quarter and a 3pc year on year increase. I wrote recently of the trolley service on our trip to Portsmouth - Southern have now announced, to commuters dismay, that this service is to cease!

London is due to have Chinese electric double-decker buses from October to add to the present green buses to cut the pollution on London's streets.

Plans for increased and improved rail and bus services throughout the UK and locally continue to feature in the press. A 'Brain train' to reach Oxford from Cambridge in one hour and to include a station at Addenbrooke's should be decided on in 2016 - possibly via Bedford and Hitchin. In our area there is £750 million scheduled under the City Deal - stations at Addenbrooke's, Cherry Hinton and Fulbourn? Soham train station - March 2018 - £6.2 million? Double tracking of line between Ely and Soham - March 2019 and improved parking and interchange facilities at Ely station - 2018 - £1 million. Leaflets have been distributed around Haverhill to gain support for a Rail Haverhill to be presented to Suffolk, Essex and Cambs. Councils. Boris Johnson is pushing forward Crossrail 2, a north/south route - it was interesting to see the underground construction of Crossrail east/west in the recent BBC TV programme 'Britain beneath your feet'. Bikebus from Cambridge south to places like Wimpole NT celebrates its first year of operation.

*(Public Transport Matters continued next page.)*

*(Public Transport Matters continued.)*

Network Rail faces criticism and fines for delays and conditions. Rail info.: 08457 484950  
Traveline: 0871 2002233

Happy travelling!

*Paddy James*

*PS. There is a happy get-together on Wednesday mornings from 10.30 -12 midday for tea or coffee and biscuits at the British Legion. Interesting discussions - holidays, local history, books, family matters, general chat. Open to all - nice view of the bowling green - do come and join us! See you there?*

## Bottisham and District Gardening Club

Our summer activities included an evening visit in June to Don and Sally Edwards' beautiful gardens at Abbots Way, Horningsea, overlooking meadows to the Cam. Club members and guests rounded off the evening with refreshments and cake. The July trip took us by coach to Castle Ashby near Northampton, where we had a guided tour of the 25 acres of gardens and enjoyed the plant centre and tea rooms.

Our speaker for the August meeting will be Andrew Harper-Scott, from Scotsdales at Horningsea, who will be giving us advice and a demonstration on *Container Plants for Autumn and Winter*. He will also judge this year's Members' Competition for the best begonia, grown from a corm provided to members by the club.

Preparations are well in hand for our Annual Show on 12 September 2015, with seven sections covering Fruit and Vegetables, Flowers, Baking, Crafts, Painting and Drawing, Photography and the Children's categories. Our motto this year is 'Something for everyone – give it a go' and we hope you will. This is a major event in the village and we are hoping for a record number of exhibits and visitors on show day. Schedules were published in the July issue of *The Cresset*, further copies are available in village stores, at the library, and on our website at [www.bottishamgardeningclub.co.uk](http://www.bottishamgardeningclub.co.uk).

New members to the club are always welcome; we have a wide variety of speakers and social occasions including the Spring Lunch, the trips as outlined above, and the Christmas Social. We meet on the fourth Tuesday of the month in the Poppy Room at the Royal British Legion, Bottisham.



**HAYDEN**  
THE CLEANING SPECIALIST

WOULD YOU LIKE YOUR CARPETS  
OR UPHOLSTERY CLEANED?

HAYDEN IS LOCAL TO THE AREA,  
OFFERING FREE QUOTATIONS  
AND ADVICE.

**MERRYWOOD**

8 LODE RD., BOTTISHAM CB25 9DJ  
01223 813766 OR 07919 561665





Cambridge Timber Buildings Ltd

Need extra space?  
Have you considered a Garden Building?

We Design, Manufacture & Install  
Superior Quality Garden Buildings

Sheds  
Workshops & Garages  
Summerhouses  
Garden Rooms  
Offices & Studios  
Bespoke Garden Buildings  
Kennels & Runs

01353 667268  
info@cambridgetimberbuildings.com  
www.cambridgetimberbuildings.com

## PAINTING AND DECORATING

## PROPERTY AND GARDEN MAINTENANCE

CALL STEVE

on  
**01223 812434**  
or  
Mobile 07445 459957

Free  
Estimates

Quick response  
to all repairs

# Cambridge Roofers

## YOUR LOCAL ROOFING COMPANY ALL REPAIRS TO FULL RE-ROOFS

Quality Workmanship - Affordable prices - Peace of Mind

Slating - Tiling - Flat Roofs - Guttering - Chimneys - Ridges - Leadwork



City  
Guilds

CALL US ON: 01223 782382

44 Hertford Street, Cambridge, CB4 3AG

## Cambridgeshire Police

### Mobile phone use at the wheel can devastate lives

Using a handheld mobile phone while driving could have devastating consequences, that's the message from police running a month-long Think! campaign. Not only does it cost people their lives but those who cause collisions and survive can receive long jail sentences.

This month, the Bedfordshire, Cambridgeshire and Hertfordshire Road Policing Unit will be out looking for motorists breaking the law. Driving while using a phone is one of the 'fatal four' driving offences, along with speeding, not wearing a seatbelt and drink or drug driving.

Inspector Mark Rogers said the mobile phones of drivers involved in crashes could be analysed to determine whether they had been used at any point before the collision.

In March 2013, a 31-year-old woman from Peterborough caused a fatal collision on the A47 at Thorney Toll, near Peterborough, after texting and making calls from two phones. She drove her Jaguar X-Type into the back of a Peugeot 206, shunting it into the path of an oncoming articulated lorry, killing the driver, a 27-year-old man from Leicester. Police seized her mobile phone, which she had denied using, and a second phone from the car. Examinations showed she had sent and received both texts and calls shortly before the crash. The woman, who had previously been caught using a mobile phone at the wheel twice, pleaded guilty to causing death by dangerous driving and was jailed for six years at Peterborough Crown Court in July last year. She was also banned from driving for eight years.

Insp Rogers said: "This case demonstrates the potentially horrifying consequences of being distracted from driving by mobile phones. "And it shows that any use of mobile phones will be picked up by officers investigating the causes behind the collision.

"If you don't end up seriously or fatally injured, you may well end up serving a significant time in prison; either way it will ruin your life."

The penalty for using a mobile phone while driving is three penalty points and a fine of £100.



# LET'S DANCE

Come and join us dancing on Saturday evenings in the Main Hall at Bottisham Village College. We will have music for Ballroom, Latin American and popular Sequence dancing.

12th September (Hawaiian Theme) • 10th October •  
14th November and 12th December (Black Tie optional).

Time: 7.30pm to 10.30pm.

The cost is £10 per couple, which includes interval tea/coffee. You are welcome to bring along your own refreshments. There is ample parking on site. For further information please contact: Frank and Sue Hancocks, 01638 741159 or check out our website: [www.letsdanceclub.org.uk](http://www.letsdanceclub.org.uk)

\*Let's Dance Club is a "not for profit" organisation established to provide dances for the community.

### PC Problems?

Can't connect to the Internet?  
Got a virus? Lost some data?  
Can't send an email or attachment?  
Printer stopped working?  
Want a wireless LAN?  
Worried about security?



"IT MAY BE YOUR KEY TO USABILITY"

Let me come and sort it out for you.  
*Fast and friendly service,*  
with everything explained.

*Sensible rates - most software is free!*  
Practical tuition also available.  
20 years PC & Mac experience.

Phone Jeff Mochridge on 01223 811609  
or 07730 760892 (new number)

## BURWELL COMPUTERS

We provide a full range of  
computer repairs and information  
technology support services to  
businesses and home users.

- VIRUS & SECURITY • EMAIL & INTERNET
- BROADBAND • WIRELESS • ROUTERS
- NETWORKS • SERVERS • UPGRADES
- REPAIRS • NETWORK CABLING

Tel/Fax: 01638 742702

Mobile: 07901 556895

support@burwellcomputers.co.uk  
www.burwellcomputers.co.uk

## ANDREW HULME

Chartered Accountant



12 Tunbridge Lane  
Bottisham  
Cambridge  
CB25 9DU

Tel. 01223 811323  
andrew@hulmeacc.co.uk

- Accounting
- Bookkeeping
- Club Accounts & CASC Assistance
- VAT Returns
- Management Accounting
- Personal Tax
- Business Advice

## Stitchshed Sewing

(Formerly Little Stitches)

### Repairs and Alterations

I am based locally and can help you with  
clothing alterations & repairs, curtains,  
blinds and cushions

### Sewing Classes

If you wish to learn to sew, then please  
call for a chat.  
Classes at the Stitchshed or private home  
tuition available for:  
Dressmaking  
Patchwork and Quilting  
General craft sewing  
Getting to know your sewing machine!

Tel: 01638 745160  
Mobile: 07449 954590  
Email: [stitchshed@gmail.com](mailto:stitchshed@gmail.com)  
Web: [www.stitchshed.blogspot.com](http://www.stitchshed.blogspot.com)

At Wired we don't have problems - only solutions



We offer solutions for all your Aerial, Freesat, CCTV, Telephone  
and Data Cabling needs.

No job is too big or too small for our engineers.

With no call centres, you will be able to speak directly to the engineer.

We offer an efficient, cost effective and friendly service.

Contact us now for a no obligation quote.

Contact us NOW for a free no obligation quote

01638 281234 / 07761 572186

[www.allwired.co.uk](http://www.allwired.co.uk)

[info@allwired.co.uk](mailto:info@allwired.co.uk)

wired

Our Once A Year Fabric Sale  
Saturday 19th September. 10am to 1.00pm  
End of rolls remnants etc. From just £1.00  
Make sure to put this date in your diary



Showroom opening hours:  
Mon to Thurs; 9am—4pm  
Fri and Sat; 10am—2pm

23 years of British expertise and craftsmanship  
Come and buy direct from our factory  
Beautiful fabrics – superb quality – great prices  
Friendly efficient fitting service.  
Curtains – Blinds – Poles – All soft furnishings

Enjoy free parking outside our showroom, just off the A14  
2B Swan Lane Business Park, Easing, Newmarket, CB8 7FN

Tel: 01638 578700 [www.starcurtains.co.uk](http://www.starcurtains.co.uk)





# My Village Handyman Services

- DIY repairs and odd jobs
- Painting & Decorating
- Tiling, Flooring & Patios
- Gardening, Landscaping, Fencing & Decking
- Kitchen & Bathroom installation
- Brickwork, Dry Walling and Small Builds
- Carpentry and Plumbing
- Window and Gutter cleaning
- Jet wash and Patio cleaning
- Rubbish clearance and Tip runs
- Carpet cleaning and Wood Floor staining
- New doors or locks
- TV and Audio Installations
- Security and Garden lighting
- **No job is too Small or too Big!**



Free no obligation quotes and advice provided  
Your very local Handyman from Great Willbraham

Contact me Steve to arrange a visit or quote  
**07500 876376** or **01223 881700**

Email: [steve@myvillagehandyman.com](mailto:steve@myvillagehandyman.com) | [www.myvillagehandyman.com](http://www.myvillagehandyman.com)

## BOTTISHAM DENTAL PRACTICE

NHS & PRIVATE TREATMENT

CLAIRE JACKMAN BDS & ASSOCIATES

Tunbridge Lane, Bottisham, Cambs., CB5 9AE

**OPEN:** MONDAY 9.00 am to 5.00 pm  
 TUESDAY 9.00 am to 5.00 pm  
 WEDNESDAY 9.00 am to 5.00 pm  
 THURSDAY 9.00 am to 5.00 pm  
 FRIDAY 9.00 am to 5.00 pm  
 SATURDAY Private 9.00 am to 1.00 pm

*New Private & Denplan Patients Welcome*

Please phone for an appointment

**01223 811844**

### Bottisham Parish Council

#### CHAIR

CHRISTINE BRYANT 127 High Street 811767

#### PARISH COUNCILLORS

SARAH BROWN 19 Beechwood Avenue 813203

HILDA BUCHANAN 55 Beechwood Avenue 811689

MARIA DICKSON 5 Jenyns Close 812499

ROS HALL 18 Spring Lane 811819

NICK JERMAN 28 Tunbridge Lane 813044

JULIA LATIF 22 Beechwood Avenue 07584 352332

ROMAN MACZKIEWICZ 12 Peacock Drive 811561

STEVEN O'DELL 23 Downing Close 812230

JON OGBORN 3 Woodward Drive 812631

TONY JOLLEY 141 High Street 812911

#### COUNTY COUNCILLOR

MATHEW SHUTER The Old Maltings, High St, Brinkley 01638 508729

#### PARISH CLERK

CLAIRE FULLWOOD 26 Peacock Drive 07914 219732

#### EAST CAMB DISTRICT COUNCILLORS

VINCE CAMPBELL 11 Jenyns Close 811490

DAVID CHAPLIN Tunbridge Hall, 60 Tunbridge Lane

#### MP FOR CAMBS SOUTH EAST

Lucy Frazer House of Commons, London SW1A 0AA  
[lucy.frazer.mp@parliament.uk](mailto:lucy.frazer.mp@parliament.uk)  
[www.lucyfrazer.org.uk](http://www.lucyfrazer.org.uk)

### BOTTISHAM COMMUNITY LIBRARY ASSOCIATION

#### LIBRARY OPENING HOURS

Monday Closed  
 Tuesday 3-5pm and 6-8pm  
 Wednesday 10-11.30am  
 Thursday 3-5pm  
 Friday 6-8pm  
 Saturday 10am-12noon

*Working in Partnership with the County Library Service.*

## Useful Information

<b>Bottisham Website:</b> .....	WWW.BOTTISHAMPC.ORG.UK
<b>Holy Trinity Church:</b> Revd Sue Giles.....	812726
<b>Roman Catholic Priest:</b> Monsignor Eugène Harkness. Parish of St Philip Howard.....	01223 211235
<b>RE:NEW/Lode Chapel:</b> Rev. Simon Goddard.....	01223 812881
<b>Bottisham Surgery:</b> .....	
Enquiries and Appointments.....	810030
Out of Hours only – Urgentcare Cambridge.....	111
<b>Bottisham Library:</b> .....	812354
Library hours: Monday Closed; Tuesday 3-5pm and 6-8pm; Wednesday 10-11.30am Thursday 3-5pm; Friday 6-8pm; Saturday 10am-12noon	
<b>Cambridgeshire Police HQ:</b> .....	01480 456111
<b>Cambridgeshire Police:</b> .....(NON-URGENT MATTERS) ring 101 - In EMERGENCIES ring 999 Police community support officer Ian Hawkins PCSO 7274 at Ely Police Station.....	Contact through 101
<b>1st Bottisham Rainbows/1st Bottisham Brownies:</b> Kay Pearce.....	811055
<b>Bottisham Bowling Club:</b> Keith Gibson, Secretary.....	811049
<b>Bottisham Boys Football Club:</b> Jim Tideswell.....	812591
<b>Bottisham Carpet Bowls Club:</b> Nora Watson.....	812121
<b>Bottisham Community Primary School:</b> Headteacher Paul Belzar.....	811235
<b>Bottisham Cricket Club:</b> Graham Barker/Charles Fletcher.....	812087 / 811039
<b>Bottisham Football:</b> John Turner/Tim Sale.....	07841592203 / 07743862836
<b>Bottisham Pharmacy:</b> .....	812321
<b>Bottisham Pool Association:</b> Manager - Jason Rye.....	811121
<b>Bottisham Royal British Legion Club:</b> Secretary - Suzy Woolley.....	812063
Branch Chairman: Dave Frost.....	www.britishlegion.org.uk/branches/bottisham
<b>Bottisham Scout Group:</b> Group Contact: Linda Jones.....	813040
<b>Bottisham Sports Association:</b> Graham Barker.....	812087
<b>Bottisham Village College, School:</b> .....	811250
Evening Classes, Clubs and Youth Club Information.....	811372
<b>Bottisham W.I.:</b> Secretary - Jenn White • mrandjw@btinternet.com.....	811600
<b>Cambridgeshire County Councillor:</b> Mathew Shuter.....	01638 508729
<b>East Cambridgeshire District Offices:</b> .....	01353 665555
<b>East Cambridgeshire District Councillors:</b> Vince Campbell, 11 Jenyns Close.....	811490
David Chaplin, Tunbridge Hall, 60 Tunbridge Lane	
<b>Girlguiding Bottisham District:</b> Cambs East County office • www.cambseastguides.org.uk.....	01223 813917
<b>Parish Council Chairman:</b> Christine Bryant.....	811767
<b>Parish Council Clerk:</b> Claire Fullwood.....	07914 219732
<b>Queen's Court Day Centre:</b> .....	811905
<b>MP for Cambs South East Constituency:</b> Lucy Frazer, House of Commons, London SW1A 0AA.....	
E. lucy.frazer.mp@parliament.uk W. www.lucyfrazer.org.uk	
<b>Cambridgeshire Trading Standards Helpdesk:</b> .....	0845 3030666
<b>Saplings Playgroup Playhut:</b> .....	813226
<b>Milton Road Tip:</b> Apr to Sept - Weekdays 9.00am-8.00pm; Weekends 9.00am-6.00pm.....	860674
Oct to Mar - 9.00am-4.00pm	
<b>CRESSSET Editor:</b> .....	email: cresset@bottishampc.org.uk
<b>Treasurer, Advertising rates and payment:</b> Rhona Walker, 94 High Street, Bottisham.....	811402
<b>Distribution:</b> Ian & Helen Cole.....	812573
<b>Design/Artwork:</b> ONG (Old Newton Graphics) • codge.com • info@codge.com.....	01449 675548

*The Cresset: While every effort is made to ensure accuracy we cannot accept liability for any mistakes or misprints. The views of, or any opinions expressed, are not those of the EDITOR. The Editor cannot accept any responsibility for statements made in advertisements.*

# Bottisham Vehicle Services Ltd

Reliable, Friendly, Professional

Service and repairs to all makes,  
MOT testing, tyres, air conditioning  
Courtesy car available  
Local collection and delivery

10 Tunbridge Lane, Bottisham, Cambridge CB25 9DU  
01223 811919 • simon@bvsltd.net • www.bvsltd.net

# MANCHETTS

Cambridgeshire • Suffolk  
Rescue & Recovery



*"For all your rescue & recovery needs at the roadside,  
motorbikes, vans, cars, and commercial vehicles alike"*

www.manchetts.co.uk e-mail: recovery@manchetts.co.uk

Broads Road Burwell Cambs CB5 0BQ

# E.C. AUTOCARE

(Est. 1980)



**SERVICING & REPAIRS**  
Cars & Light Commercial  
Diesel & Petrol



## MOT TESTING STATION

**Servicing to all makes of Cars  
& Light Commercial**

- ✦ ENGINE MANAGEMENT DIAGNOSTICS
- ✦ TYRE - BRAKES - EXHAUSTS
- ✦ AIR CONDITIONING SERVICING
- ✦ GEARBOX SPECIALISTS MANUAL & AUTOMATIC

## **FAST, FRIENDLY, FAMILY BUSINESS**

**56 HIGH STREET, BOTTISHAM**

Also at

**A1303 SERVICE STATION, BOTTISHAM**  
(behind Brian McKay)

Tel.01223 811122 or 01223 812357

