

December 2023

THE 
Cresset



News, views and what's on, in and around Bottisham



Do you use No.11 or No.12 bus service?

Would you like to travel by bus more and visit more places than you can currently?

Do you think improvements to the service could be made?

Then we want to hear your views

Improve Your Journey Along the B1102 Corridor

The A to B1102 Group, a cross-parish working group, wants to better understand the travel needs of people living in local villages.

The feedback will be used to lobby the authorities to make improvements to our bus services.

The survey will take 10-12 minutes. No personal data is collected.

You can fill the survey in by visiting:

<https://www.surveymonkey.co.uk/r/ZQQPPVL>

or

Pick up a paper copy at Bottisham Co-op or Bottisham Medical Practice or Holy Trinity Church & Please 'post' your responses by 15th December



December here and Christmas weeks away. Where does the time go? A couple of months ago we were talking about an Indian summer and concerned about lack of water etc. Now with morning frosts and floods all around, we are well into winter. To make the time go even quicker, you may want to consider that in a couple of weeks' time we will start to head back to summer with the days getting longer even in Christmas week! Talk about feeling older!



So enough of that and let's look forward to the festive season and the chance to catch up with friends and family.

If not with family, there is plenty of activity going on in the village and around to put us in the mood.

The Social Club have their enjoyable Christmas night with Newmarket town band bringing a festive night of carols as well as the clubs Big Christmas Draw night. Draw tickets on sale now at the club.

For the young ones there is the children's Christmas party on the 2nd, and an invite to see the New Year in with a live band playing.

Other organisations have their own festive activities as well.

The bus survey has been extended through to 15th December so if you haven't done so, do go online and have your say. Survey forms are also available from and collected by the shop and Bottisham surgery.

Linda Jones writes a justified appreciation of the time Peter Rayment, aka "Bosun", has spent as Leader of the 1st Bottisham Scouts. However, she is also doing a shoutout for somebody to take his place! It would be a great shame if the scouts and our village youth were to lose out because there was nobody to take over. Better still, as Linda says if two or more people were able to share the task. An enjoyable task it is, as well.

You will notice that the copy deadline for the next magazine is a bit earlier than usual. This is because we need to get it printed before the printers shut down over Christmas and New Year. So if you have something to go in, then do please get it in early.

All the other Clubs and organisations also have their articles to update you on what is going on.

I would at this time want to say a big thank you to all those hard-working individuals who give up their time to help with the distribution and organisation of The Cresset. You are all a great credit to this village, so thank you.

There is little of cheer in the wider world, and difficult not to feel down about it. Whether that is in Ukraine or the middle East, Taiwan or Afghanistan, I am sure there will be a way forward and Christmas must offer the best time to reflect and find solutions. This, especially in the modern-day country which was the birthplace of what Christmas should all be about, Israel. So for my part I wish everybody Christmas cheer with peace and goodwill to all.

Your Editor

News From Holy Trinity Church Bottisham

During the morning of the final day of October Richard Ayres (our organist and former Head Gardener of Anglesey Abbey) joined me to plant 550 small bulbs in the 'Spring Meadow' area of the churchyard, adjacent to the footpath. We planted 250 snowdrops and 100 each of Wood Anemone, Winter Aconite and Native English Bluebells. In the afternoon Ian Cole joined me and following a good scarification of the 'Summer Flower' area we sowed 1kg each of Native British Wildflower and Yellow Rattle. (Rattle is a small yellow flowering plant which feeds on grass and so encourages wildflowers to flourish) In addition, a beetle/bee/insect box, kindly built for us by Red2Green was prepared, to install close to the wildflower area. This additional planting and management will help us towards obtaining the Bronze award for the Wildlife Trust Churchyard Conservation Award. More details are posted on the church noticeboard. If anyone would like to help with tasks in the churchyard from time to time (you do not have to be a churchgoer, just someone who cares for our environment) then please contact me. (Details at the back of the Cresset).



By the time you read this we will have interviewed for the vacant post of vicar and I will post the result on the Community Facebook page.

Sadly, we have had a further number of Bottisham residents pass away recently and the funerals of James Fitch, George Cooke and Brenda Boal were held in the church during November. I am extremely grateful to visiting clergy who take these services during our interregnum. Graham Caswell, husband of Rev Elizabeth Caswell, who helps us out with services from time to time, also passed away suddenly and his funeral was held in the United Reform Church in Cambridge.

As we enter the time of Advent and Christmas the number of services will increase. On Sunday December 3rd, Advent Sunday, the Archdeacon of Cambridge, the Venerable Alex Hughes will return to lead our Benefice Holy Communion Service at 10.30am. In the evening Julie Bristow will conduct a candlelight concert involving her adult and children's choirs. More details and tickets from Julie bristowjulie6@gmail.com Instead of our normal Morning Prayer service on December 17th, Bottisham resident, Rev Keith Morrison will lead the Benefice Holy Communion Service at 10.30am. On the evening of Friday 22nd December Sarah Maxwell will lead our candlelit Carol Service of lessons and carols, which, as with all our services, everyone is warmly welcome to attend.

On Christmas Eve, Sunday December 24th we break with tradition and are holding our Holy Communion Service at 6.30pm which we hope will be more appealing to older folk and others who find the traditional 'Midnight Communion' rather too late and tiring – this service will be led by Rev Elizabeth Caswell. Finally we will be welcoming back our Primary School for their Carol Service at 6pm on Tuesday 12th December. Details of all the Anglesey Benefice Services are listed elsewhere in the Cresset and on the church noticeboard.

I am hoping that with a change of Supplier for our Electricity, the heating and lighting costs over the next year will be lower than we currently pay.

Contents

Services in the Anglesey Benefice.....5	Bottisham and District
Parish Council Report.....7 & 9	Gardening Club.....27
Planning Notes.....9	Bottisham Community Library
Lucy Frazer MP for South East	Association.....29
Cambridgeshire writes11	East Anglian Air Ambulance31
District Councillors' Report.....13	Bottisham Community Sports and
Cambridge, Past, Present & Future 15	Social Club.....33
Thermal Imaging for a Cosy Home17	Bottisham WI.....35
Bottisham Adult Learning Association	Bottisham Airfield Museum Group
(BALA).....19	(BAMG).....37
Bottisham Village College19	News from Wicken Fen Nature
Public Transport Matters21 & 23	Reserve.....39
1st Bottisham Scout Group are Hiring	Bottisham Bird Brain.....41 & 43
- Volunteers!!23	The Bell Pub Function room45
News from Bottisham Medical	
Practice Patients'	
Participation Group.....25 & 27	

We are planning a Carol Service for Hilton Park and Oaklands residents on Wednesday 13th December and if you would like to join us to sing or read a lesson, please let me know.

We look forward to welcoming you to any of our services, particularly over the Christmas period.

May I wish you a very joyful Christmas and a Happy New Year.

Stuart Field - Churchwarden



Anglesey Group Mothers' Union

Our October meeting began with feedback from the Trustee reports of the Autumn Diocesan Meeting held in Waterbeach on 14th October. After our usual short service of worship members enjoyed a social afternoon playing Bingo. The 'Bring and Buy' stall raised over £50.

Mothers' Union takes an active part in The United Nations' 16 Days of Activism Against Gender-Based Violence and Abuse. This runs from 25th November, the International Day for the Elimination of Violence against Women, until 10th December, Human Rights Day. This is the topic of our November meeting. More information can be found on the MU website <https://www.mothersunion.org/what-we-do/policy/16-days-global>

At our next meeting on Thursday 14th December, we will have a short Advent Service followed by Christmas craft and mince pies. You are always welcome to come and join us.

We wish all readers a blessed and peaceful festive season.

Ann Langran

Reconnect to your life

Whatever your hearing difficulty, angli-EAR Hearing uses the most up-to-date tests and equipment to find the best solution for you.

Where to find us:
Audiology House (Cambridge)
15 Woollards Lane
Great Shelford
Cambridge
CB22 5LZ



Book your
FREE
ear health
check today

**Independent audiology
experts you can trust**



Hearing
Assessments



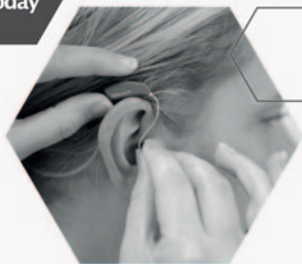
Ear Wax
Removal



Hearing
Aids



Tinnitus
Solutions



BOOK ONLINE

www.angliearhearing.co.uk



01223 661399

info@angliearhearing.co.uk

Services in the Anglesey Benefice

Sun Dec 3rd	9am	Online service on Zoom
	10.30am	Holy Communion - Bottisham
	4pm	Village Worship - Quy Village Hall
Wed 6th	8pm	C by C (a short contemplative service) - online via Zoom
Sun 10th	9am	Online service on Zoom
		Holy Communion - Quy
	10.30am	Christingle Family Worship - Swaffham Prior
Sun 17th	9am	Online service on Zoom
	10.30am	Holy Communion - Bottisham
	3pm	Carol Service - Quy
	4.30 pm	Carol Service - Swaffham Prior
	6.30 pm	Carol Service - Swaffham Bulbeck
Thur 21st	10.30am	Carol Service - Lode
Fri 22nd	10am	Nativity and Crib Service - Lode
	6pm	Carol Service - Bottisham
Sun 24th	9am	Online service on Zoom
	6.30pm	Holy Communion - Bottisham
	11.30pm	Midnight Communion - Swaffham Bulbeck
Mon 25th	8am	Holy Communion, Quy
	10am	Holy Communion - Swaffham Prior
Sun 31st	9am	Online service on Zoom
	10.30am	Holy Communion - Lode
Every Thur	10.30am	Holy Communion - Lode

**Please check the Church notice board for up-to-date information;
or email admin@angleseygroupparishes.co.uk, which is also the address to request
the Zoom link.**

THE CANTILENA SINGERS

Is a well-established chamber choir that performs regularly in Cambridge and the surrounding villages, often in churches. The Cantilena Singers brings its 40th anniversary year to a close with an evening of seasonal music for Advent, featuring works by William Byrd, in commemoration of the 400th anniversary of his death.

Christus natus est

Saturday 9 December 2023, 7.30pm - St James's Church, Lode.

Refreshments will be served during the interval.

No need to book, just come along. - There will be a retiring collection



Village Litter Picks

Fresh air, friendship and looking after our wildlife

Bring your gloves and suitable clothes for the outdoors!

Starting Location	Date	Month
2024		
Bottisham Village College (<i>sports centre car park end</i>)	13 th	January
Queens Court Care Home	10 th	February
Bottisham Community, Sports & Social	16 th	March
Bottisham Village College (<i>sports centre car park end</i>)	20 th	April

Further Information: All events, once a month on a Saturday, starting at 10:00am for approx. 1.5 hours, refreshments 11:15am (donations welcome!)

Ways to keep in touch with updates:

- ✓ Join the Bottisham Village Litter Pick WhatsApp Group
- ✓ Visit the Bottisham Events Facebook Page
- ✓ Visit the Bottisham Community Group Facebook Page

Parish Council Report

October was a busy month, with the retirement village planning appeal consuming many hours of Parish Council time. I would like to put on record my appreciation of the submissions made by District Cllr Cane and Dr. Keith of the Medical Practice in support of the decision by East Cambs not to grant approval. May I also thank County Cllr Daunton (from an adjoining ward) whose submission was read out by Cllr Cane. Grateful thanks also to residents who listened in and interacted with the Council during the week, making some valuable points. All the sessions were recorded and can be accessed from the East Cambs web-site. Good bed-time viewing?

I felt a good case was made by all the parties against the application. But I would not dare to put on paper my prediction of the outcome. We should know the result by the end of this month. Maybe an early Christmas present - who knows??

The start of the Appeal coincided with our follow-up Community Forum - making for a packed day. I will comment on the outcome from the Forum next month. However, this month I would like to focus on two matters of great immediate importance - the BUS SURVEY and the BOTTISHAM GREENWAY.

PLEASE FILL IN THE BUS SURVEY!

The AtoB 1102 group (www.atob1102.org) is a cross-Parish body co-ordinating efforts to influence the development of our bus services, in liaison with our County/District Councils and the Mayor. It is the Mayor who holds final responsibility for our bus services.

While the No.12 bus is a completely commercial service (and should remain largely unchanged), the No.11 is subsidised by the Mayor and the contracts for any further subsidised services are up for renewal end of March. So we are approaching a critical point, as decisions are made about future funding of services. There is a high level of confidence that the No.11 will continue to receive funding. But the vexatious issue of the connection between Bottisham and the surrounding villages has yet to be resolved.

In order to help us guide the Mayor in developing an optimal service, there is a need to generate good quality data as to the travel needs of residents. To that end, the B1102 group has instituted a resident's survey across the local villages. We were working to a cut-off of 24th November. However it has been decided to extend this until 15th December, as some of the villages have been a little slower getting off the ground with the survey.

So, if you have not done so yet, please fill in the survey. An online version can be accessed via the Parish Council web-site or this link: www.surveymonkey.co.uk/r/ZQQPPVL

A hard copy version is also available in the COOP, Bottisham Medical Practice and Holy Trinity Church - where there are also boxes to post your responses. Please could we have all responses back by 15th December, to give the group time to analyse the results to present to the Mayor.

Continued on page 9

D.S. FREEMAN

Painters & Decorators

- Residential & Commercial
- Interior & External
- Fully Insured
- All Aspects Undertaken

duncanfreeman@hotmail.co.uk

Tel: 01223 812920

Longmeadow

Morgans Hairdressers

Tel: 01223 811646

Creative styling for the family

- Creative cutting
- Hair up
- Colouring
- Colour correction
- Perming

Open: Tuesday - Saturday, Wednesday
until: 8.00pm



10 Herschel Court, High Street,
Bottisham, CB25 9DQ



Follow us on facebook

E.J. DENSTON

KITCHENS & CARPENTRY

All aspects of Carpentry & Joinery
New Build 1st & 2nd fix carpentry
Purpose made cupboards, wardrobes
& Bookcases
Kitchens supplied & fitted
Renovations & small build works



Tel: 01223 813279
Mobile 07711 578687

Carpentry Services

TONY MARTIN

Over 30 years experience

*Any carpentry jobs
undertaken — BIG or small*

Call Tony
for a free estimate
Tel: 01223 812786
(Bottisham)
Mobile: 07767475987

Continued from page 7

I would urge all our readers fill in the survey - whether you are a current bus user or just a potential user. Our objective is to see a service developed that will encourage us all to use the buses more - to help reduce congestion and our carbon footprint. For this to happen we need your input now.

BOTTISHAM GREENWAY INFORMATION EVENING

Many of you will be aware that the Greater Cambridge Partnership (GCP) is developing a number of “Greenway” routes around Cambridge. These are new or improved walking, cycling and, where appropriate, horse riding routes. It is planned that these will help us travel in a pleasant and sustainable way into and out of Cambridge and make local journeys both safer and easier. One of these is the “Bottisham Greenway”, which will be coming to our village soon. A broad outline of the project can be found at the link below:

<https://www.greatercambridge.org.uk/sustainable-transport-programme/active-travel-projects/greater-cambridge-greenways/bottisham-greenway> or <https://tinyurl.com/3r67bt4f> should save typing on most browsers.

However, the detailed plans have moved on some way from what is on the web-site and we would like to share these with residents. So this is to give you advance warning of an upcoming information evening and ask you to put this date in your diary.

**DATE: Tuesday 30 January, LOCATION: Bottisham Sports & Social Club,
Time: 7.30 pm**

Jon Ogborn, Chair of Council

Check out our website for the latest news, minutes, agendas, and features at bottisham-pc.gov.uk.

Planning Notes

a) New applications:

23/01061/FUL. 33 Jenyns Close Bottisham. Single storey rear extension to replace existing conservatory, rear box dormer to create 2 bedrooms at first floor.

23/01170/FUL , 6 Cedar Walk Bottisham. Ground floor rear extension. first floor extension and new entrance porch to front

22/01291/ESF, Newmarket Road Bottisham. Installation of Renewable Energy Park between A14 and A11

b) Planning Applications approved by ECDC:

23/00961/CLP. 61 Bell Road Bottisham. Garage conversion

23/00255/FUL. 68 High Street Bottisham. First floor rear dormer.



Are You Paying Too Much For Your Medical Insurance?

Independent And FREE Advice

- **Switch to an alternative scheme** – If you are currently insured, switching to a competitor can mean ***substantially lower rates***
- **Pre-existing conditions covered** – It is often possible to include pre-existing medical conditions currently covered by your existing provider
- **Improve your coverage** – We can frequently improve your cover whilst also lowering the cost of your premium
- **Complexities of different schemes** – In many cases, people are over insured – we can ensure you are covered with a scheme that meets your individual needs and requirements
- **Full cover for cancer treatment** – Many policies do not cover cancer in full – we are able to advise on your current level of coverage



For further information, please call Simon Lively at
M&L Healthcare Solutions -

FREEPHONE 0800 145 5838 or 07710 993990

Email: simon.lively@mlhs.co.uk

quoting ref: **The Cresset**

M&L Healthcare Solutions Ltd is authorised and regulated by the Financial Conduct Authority. (FCA Reference number 943748)

Lucy Frazer MP for South East Cambridgeshire writes

As we approach the end of 2023, I wanted to look back on the year and let you know about some of the work I have been doing for you as your local Member of Parliament.

2023 has been a year of highs and lows. I think most people would join me in recognising the coronation of Charles III and Camilla in May as a memorable highlight. As the first coronation in seventy years, the event always bound to be a special occasion, but I was moved by the many displays of national unity and celebration I witnessed over the Bank Holiday weekend.

However, for all of its wonderful moments, the year has presented us with challenges. Not only have we had a second year of war in Ukraine, but another conflict has commenced in the Middle East. At home, the high cost of living remains a concern for many, despite the government's work to drive down inflation from 11.1% to 6.7% in recent months. I remain committed to helping my constituents across South East Cambridgeshire get the support and advice they need.

I also know how important quality healthcare is to my constituents. That's why I have been working with my neighbouring MP, Anthony Browne, and senior leaders at Addenbrooke's Hospital to secure a new cancer hospital at Cambridge Biomedical Campus, which will enable better diagnosis and precision treatments from 2026-27. I continue to campaign for the funding required to deliver a new children's hospital on the same site, which would be a world-first specialist facility for children and young people.

More locally, I know that there is a real desire to rebuild the bus links between the B1102 villages. In response, I have written more than once to the Mayor to make the case for this, especially since the government gave the Combined Authority an additional £2.3 million extra for our region's bus network this year. I am currently working with the parish council to establish which solution best serves local residents and would welcome your input on this.

I have campaigned for better broadband for many years, so I am pleased that Bottisham is due to benefit from the first phase of the government's £5 billion 'Project Gigabit' in the next few months. The project to instal next-generation broadband will break ground this quarter, with connections starting early next year.

I have enjoyed several visits to Bottisham this year. Back in January, I visited Bottisham Village College to discuss environmental issues with young scout leaders. In April, I then went along to Bottisham Airfield Museum, where I discussed with Jason Webb, the Chairman of Trustees, the importance of cultural offerings in South East Cambridgeshire and how the museum could improve its outreach in future.

Finally, in this special anniversary year for Bottisham Community Library, I met Treasurer Margaret Coles and local volunteers, Barbara Harwood and Guyatri Chivali, at the library over the summer to inspect the superb facilities and to understand how the location has been utilised to serve the wider community in recent times.

I wish you all the best for the rest of the year. And, as always, please do not hesitate to contact me on lucy.frazer.mp@parliament.uk if I can support you in any way.



HILTON PARK

BARCHESTER HEALTHCARE

Care as unique as you are



A place where your loved one matters

When looking for a care home it's important to know your loved one will be valued for the unique person they are, surrounded by caring people who understand their routines, know their favourite foods, and support them to enjoy the hobbies and interests they love most.

You'll find all this and more at Hilton Park Care Home.

Call 01223 633900 to find out how we can help you.

Bottisham, Cambridge, CB25 9BX

barchester.com

Nursing care • Residential care • Respite breaks

District Councillors' Report

Bin collections will change over the Bank Holidays. For Bottisham, Brinkley, Lode and Westley Waterless the black sack and green/brown bin will be collected earlier than usual on Saturday 23 December and the black sack and blue bin will be collected later than usual on Tuesday 2 January.

In January, the crews will collect real Christmas trees for recycling – please remove all decorations and cut them so that they are no higher or wider than your Green bin and put them out beside your green bin before 4 February. There's useful information about how to recycle other Christmas waste on the website at <https://www.eastcambs.gov.uk/east-cambs-street-scene/christmas-recycling>.

Full Council updated the Local Plan by adopting a single-issue review on housing growth. This sounds rather dry, but it has significant impact on planning matters across the District. Because the Plan dates back to 2015 Planning Inspectors were increasingly questioning its validity in planning appeals. Now that Council have updated the housing growth, the Plan is more robust and should last until the new Plan is in place. The review found that the Council needed to increase house building by about 50% over the growth in recent years but will still miss its targets for affordable housing. We will need to address the challenge of building houses which people can afford in the new Local Plan. Many Parishes are already trying to address this challenge in their Neighbourhood Plans.

We have been pressing Sanctuary about various issues locally, not least houses which have been empty for a very long time. At the October meeting of Full Council, a colleague from Ely noted the growing number of properties let by Sanctuary housing that are empty and have been so for over a year. Although the Council's leadership rejected a request to ask Sanctuary Housing to attend a meeting of the Council's Operational Services Committee to answer questions from members about its empty properties. They have organised members' seminar instead. There is a high level of public interest in the shortage of social housing in the district, so we would have preferred a meeting open to the public, but at least we will be able to raise concerns with senior management at Sanctuary.

Prices are rising at a slower rate now, with inflation coming down. But they are still rising and food and fuel remain expensive. A survey by Cambridgeshire County Council shows that 86% of us are concerned about cost of living increases and almost half of us – 48% - have cut back on heating use. If you are struggling, or know anyone who is struggling, there is help from advice through to grants and food vouchers. You can find out more at <https://www.eastcambs.gov.uk/cost-living/cost-living>, call the Housing and Community Advice team on 01353 665555, or you can ask John or Charlotte who will put you in touch with the Council's team.

We have no meet your Councillors in December, but you are welcome to contact us any time john.trapp@eastcambs.gov.uk, charlotte.cane@eastcambs.gov.uk

We hope you all have a good break with your friends and families across the Christmas period and thank those of you who work over the holidays to keep services available.



My love for dogs
An alternative to Kennels

A personal, caring approach to dog care.

In our home, your dog will receive two hour-long walks every day as well as treats, socialisation with other dogs and the administration of any required treatments.

- Fully insured and police checked
- Licensed by Sth. Cambs. District Council.

For further details call Amanda on
 07903 806750

Based In Steeple Morden near Royston.

C & BLINDS

Specialists in Blinds
 Any Size, Any colour

Vertical Blinds
 Roller Blinds
 Venetian Blinds
 Wooden Blinds
 Roman Blinds

Repairs

Free estimates

01223 211171
 07761 262070



ONG

“Successful entrepreneurs are givers and not takers of positive energy.” ANONYMOUS

codge.com
info@codge.com
01449 675 548

Design & Origination • Website Design & Maintenance • Email Marketing • Digital Publishing
 • Logo Creation • Cartoons & Illustrations • Theatrical, Product Photography & Retouching •
 Business Stationery • Promotional Flyers & Posters • Newsletters & Magazines • Programs &
 Catalogues • Books & Brochures • Calendars • Reports • Signage, Displays & Banners •
 Personal & Wedding Stationery • Mac Training

Cambridge, Past, Present & Future

- A colourful month of activities



Ghost Stories by In Situ: at the Leper Chapel; Fri 1 & Sat 2 Dec | 8pm | £15

Deliciously scary stories in the atmospheric Leper Chapel. Bookings:
www.insitutheatre.co.uk

Winter Tree Walk at Wandlebury; Wed 6 Dec | 10am - 12pm | Free

Guided walk to learn how to identify various tree species in winter. Meet in car park.

Winter Wreath Making at Wandlebury | £35 per wreath

Fri 8 Dec | 1pm & 4pm

Sat 9 Dec | 10.30am, 1.30pm & 4.30pm

Sun 10 Dec | 10.30am, 1.30pm & 4.30pm

Make a beautiful wreath for your door from 100% natural materials.

Earlier sessions are open to all, and the last session on all dates is for adults. Each session is 2 hours long.

Book online at www.wildthymeandembers.co.uk

Tales of The Uncanny Demon Lover by In Situ: at the Leper Chapel; Fri 8 Dec & Sat 9 Dec | 8pm | £15

Tales of the ghostly, the uncanny and the erotic performed in the Leper Chapel. Bookings:
www.insitutheatre.co.uk

Christmas Carol Singing at the Leper Chapel Sun; 10 Dec | 4pm & 5pm | Free

Two Christmas carol services led by Christ the Redeemer Church with brass band and mulled wine. Book in advance: www.ctrbarnwell.org

Midnight Communion at the Leper Chapel; Sun 24 Dec | 11.30pm - 12.30am | Free

Simple Christmas service in the atmospheric Leper Chapel

Once Around Wandlebury; Fri 12 Jan | 10am - 12pm | Free

Gentle guided walk with our warden to explore the park in winter. Meet in the car park.

Winter Tree Walk at Wandlebury; Wed 17 Jan | 10am - 12pm | Free

Guided walk to learn how to identify various tree species in winter. Meet in car park.

Copy deadline for next issue is 11 December.

*Please send material to the editor
at BottishamCresset@gmail.com*

SECURE CONTAINER STORAGE

10ft and 20ft

IDEAL FOR BUSINESS OR PRIVATE STORAGE.
CONVENIENTLY LOCATED IN BOTTISHAM

Call 07841 930065



Rothwell's
Carpet Cleaning

01638 428 060

01223 832 928

www.Rothwells.biz

Carpet Cleaning

Stone Floor, Upholstery & Rug Cleaning.

A few points that make us stand out from the others,

Rothwell's has been in business since 1993.

We're an honest local family firm.

Our large truck mounted machines mean more cleaning
& drying power for the best results possible.

Members of both the NCCA and TACCA.

We will move the furniture for a thorough clean.

100% satisfaction or it's FREE.

Call Oliver and Max Campbell for expert help today.

Rothwell's, Malting End, Kirtling, Newmarket, CB8 9HH

Thermal Imaging for a Cosy Home

Dear Bottisham Cresset,

Cambridge Carbon Footprint are once again delighted to offer to residents, and organizations, across Cambridge and South Cambs the opportunity to borrow and learn how to use a thermal imaging camera, for free, to help create more cosy and efficient homes. Learn how to interpret thermal images, to discover draughts, gaps in insulation, heating problems, etc. Having this information is great for deciding on home improvements, and making fixes, both for homeowners and renters.

“really useful tool for assessing the home’s heat loss and for planning improvements”

The Project also encourages individuals or organizations to undertake training to survey multiple homes. In 2022 a Heydon Parish Councillor borrowed a camera and undertook a survey of 20% of the Village’s homes and intends to do more this year.

TRAINING SESSIONS:

Three free training sessions will take place online from 7:00-8:30 pm on, Thu 14 Dec, Mon 22 Jan, Thu 29 Feb

Camera Borrowing:

We only lend cameras to people already trained. Bookings for cameras will open on 1st Nov, after the training session. Free Loans of 14 cameras will start on Fri 3rd November, till early April:

Each loan: Fri pm to Mon am, or Mon pm to Fri am, from 14 volunteer camera hosts around South Cambs and Cambridge City.

Information, and Interviews with experts, volunteers and organisers can be organised on request.

Contact Fran Sutton: fran@cambridgecarbonfootprint.org 07713841391

or **Tom Bragg:** tom@cambridgecarbonfootprint.org 01223 844291, 07990 548755

Copy deadline for the next issue is 11 December.

Please send material to the editor at BottishamCresset@gmail.com

Have you thought of advertising your business in *The Cresset*?
Email the Editor for details: BottishamCresset@gmail.com



DRAIN-PLUMB

*Plumbing, Heating & Drain
Services*

BLOCKED DRAINS CLEARED

- Gas Boiler Service & Maintenance
- Power Flushing of Boilers & Heating Systems
- Home Buyers CCTV Drain & Plumbing Surveys
- All Plumbing & Heating Repairs/Alterations
- All work Guaranteed

TEL: 01638 742873
MOB: 07932 773515

7 NESS ROAD,
BURWELL
CAMBRIDGE, CB25 0AA

TV AERIALS

SATELLITE

DIGITAL FREEVIEW

Installations
Extra points etc.
Tuning in of TVs, Digiboxes etc.

Experienced local engineer
RICHARD FORTEY
01638 662119

No Call Out Charge

Bottisham Adult Learning Association (BALA)

SPRING TERM COURSES 2024

We are looking forward to welcoming back Julian Sedgwick for a new 5-week course. This course on Japan: Japanese History and Culture: A Deeper Dive will explore 5 specific threads – Japan now, history, film, the role of women and literature with the aim of understanding more deeply key elements of modern Japanese society. Illustrated with many images and video clips and presented by an expert on Japan.

The course will start at 10.00am on Thursday 18th January and run until Thursday 15th February

The last session will be followed by a short agm

The cost of the course is £20 for members with an additional one off £5 charge for non-members. We meet at Bottisham Sports and Social Club in Downing Close. We take a break midway through the session and ask that you bring your own tea and coffee - we provide the biscuits.

Starting at 10.30am on Thursday 24th February 10.30 for 5 weeks

A return visit by Stephen Poulter to present a course entitled Becoming a House Detective – Researching the Story of Historic Buildings. A local historian, Stephen will reveal the research process he followed when uncovering the 350 year old story of his 17th century cottage in Norfolk. More details of this course to follow in the next magazine. We look forward to seeing you again. New members are always welcome. For more information email Bottishambala@btinternet.com

Helen Cole



Bottisham Village College

Adult Learning

Are you interested in learning something new?

Our full range of courses for the Spring term is now available and you can book a course at any time by visiting our website.

Calligraphy Beginners and Intermediate /
Dressmaking (Daytime and Evening class) / Pattern Cutting
Indian Cookery Thali / Traditional Italian Cookery / Italian Language
Yoga /Dance Fitness / Pottery / Introduction to Felt Making
English Speaking for Other Languages

Tel: 01223 811372 or email: adultlearning@bottishamvc.org

Centre open Monday to Wednesday 8.30am – 2.30pm, Thursday 8.30am– 1.00pm

Facebook: [BottishamAdultCommunityLearning](https://www.facebook.com/BottishamAdultCommunityLearning) or Twitter: [@CommunityEdBott](https://twitter.com/CommunityEdBott)

ANGLIAN LEISURE BOTTISHAM BRINGS YOU THE FEELING OF LIVING FITTER, HEALTHIER AND HAPPIER!

Activities:

- Children's swimming lessons.
- Judo lessons.
- Fitness classes.
- Swim sessions.
- Fitness suite.
- Women's only football for wellbeing.
- Hardcourt bookings.
- Sports hall bookings.
- Gymnasium bookings.
- Dance studio bookings.
- 3G bookings.
- Pool bookings. Please see our website for more information!
- Party packages.
- Membership schemes. Email: bottisham@anglianleisure.co.uk
- CarBoot Sales.



Or
Phone: 01223 811121

Visit us: 1 Lode Road, Bottisham, Cambridge, CB25 9DJ



Public Transport Matters

There are two pieces of very good news this month. Firstly, as part of the new government money that has resulted from the abandonment of the northern section of HS2 (between Birmingham and Manchester), the £2 maximum single bus fare cap, financed by the government, has been extended to continue until the end of 2024.

Secondly, the proposals to significantly reduce rail station ticket office opening hours and, in several cases, close rail station ticket offices completely, have been abandoned. The government, which exercises a huge amount of control, through both regulation and finance, over the rail industry, has come to realise that there was enormous public disquiet about the ticket office closure proposals, and is now instead seeking alternative ways of reducing rail industry costs.

Some of our readers will know that I work in the transport industry, and as part of my job I was privileged to attend at the beginning of November an excellent and very well-attended conference in Leicester on Quality Bus Services. Leicester has a very high-specification 'Enhanced Partnership' between the City Council and the 7 bus operators in the area, and this involves several legal obligations, lots of bus priority on city streets – which delivers high bus speeds and high bus reliability – and extremely good and easy-to-understand information at bus stops, with strong network branding. Not only does this involve just the City Council, but it also covers fringe outer suburbs that are actually in other Leicestershire district council areas. Bus usage in Leicester is growing significantly as a result.

A key element of the Enhanced Partnership in Leicester is a major move to bus electrification, and as part of the Conference I participated in a fascinating visit to a large bus depot designed specifically for electric buses, where the bus engineering staff all have specialist electric vehicle maintenance qualifications. They all seem to really appreciate working on these new electric vehicles, compared to new diesel buses. More information on the Enhanced Partnership there is at www.leicesterbuses.co.uk

Closer to home, much work has been done by local activists and by elected representatives recently to try to find a way to provide a public transport link between Bottisham (with its popular local facilities) and the Swaffhams, Lode and Burwell. All this is being done while recognising that, actually, many users of the current 11 bus route between Cambridge and Burwell appreciate the fact that it is now faster because it avoids Bottisham.

Efforts continue to develop viable solutions to this challenge, and the A to B1102 Group's Travel Survey, which the Bottisham Parish Council Chair has mentioned in his 'Parish Council Notes' article in the Cresset, is a vital part of this. The Group, in conjunction with local Parish Councils, is in active discussions with CPCA, which provide financing for the non-commercial bus services in the area; and the Group is very keen to understand people's complete travel needs better. So I do plead with you to complete the survey, available online at <https://atob1102.org/> and in paper form from the Bottisham Co-op, Bottisham Medical Practice, and Holy Trinity Church: make sure that you complete the questionnaire by 15th December (a new extended deadline to ensure that we get the maximum level of response).

Continued on page 23

M&P

LANDSCAPE AND DESIGN

Patios, Block Paving, Fencing,
Turving and all Gardening needs.

References available on request.

Local tradesman • Free estimates

PLEASE CALL

01223 811144

MOB **07837 358550**

N & G Marsh of Burwell

Specialising in bespoke metalwork
and engineering

- ❖ Welding services
- ❖ Handrails
- ❖ Gates
- ❖ Metal railings
- ❖ Tow Bars
- ❖ Mower repairs
- ❖ RSJs supplies

Services to Building
and Agricultural Industries

Brian Marsh Engineer

Tel. 01638 741354 Mob. 07519 493664

Email: Brian@n-g-marsh.co.uk

Website: www.n-g-marsh.co.uk

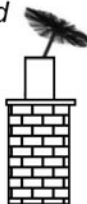
Unit 12, Meadow Ind. Estate
Reach Rd., Burwell, CB25 0GH

R. BRISTLEY Est. 1974

9 Collings. Place Newmarket CB8 0EX

BRUSH ELECTRIC SWEEP

- All Chimneys swept
- Solid Fuel, Oil and Gas
- Cows, Nets and Pots fitted
- Carpets Cleaned
- Stoves Serviced
- Competitive Prices
- Very Clean
- Public Liability Insurance



also Classic Wedding Car Hire
White Citroen DS21

Tel: 01638 662439
www.rbristley.co.uk

BED AND BREAKFAST

THE MEADOW HOUSE

2A High Street, Burwell,
Cambridge. CB25 0HB



- En-suite rooms with colour TV.
 - Large car park and grounds.
 - Family rooms, children welcome.
 - English Tourist Board 4 Diamonds.
- Self catering cottage also available
at Swaffham Prior.*

Brian & Hilary Marsh

Tel: 01638 741926 Mobile: 07519 493664

Fax: 01638 741861

Email: Bookings@themeadowhouse.co.uk

Website: www.themeadowhouse.co.uk

Continued from page 21

Note that questions 4 to 8 of the Survey relate to journeys within a 20-mile radius of your home: these can include the under-20 mile part of a longer journey - (e.g. driving to Cambridge North Station in order to catch a train to London). Please use the space provided in the box at Question 16 to include more details if your answers need explanation to make them fully understandable.

Happy travelling!

**National Traveline Enquiries (for bus services) - www.traveline.info
or 0871 200 22 33 (a Premium-rate service).**

National Rail Enquiries - www.nationalrail.co.uk or 03457 48 49 50

John Austin

1st Bottisham Scout Group are Hiring - Volunteers!!

Dear Editor,

I write in response to Peter Rayment's article 'The adventure of a lifetime' where he describes his wonderful Scouting journey over the last 18 years. As a previous Cub Leader of many years, I had the pleasure of being at Peter's side for several of the adventures he describes plus many more. Always greeted with a 'Jonesy', I'll miss his humour and sense of fun within the group, and I know the Scouts will too. Thanks Peter, for everything you've done within 1st Bottisham Scout Group. You are a legend!

And so the search goes on for a new Scout Leader. So far, we have had zero response to Peter's article and our Facebook post. Please do think if this is something you could do. Without someone stepping forward to take on the role then we will have to close down the Scout section of the group. We are always on the lookout for assistants too for any of the sections. As an assistant you don't have to commit to every week but if 4 people came forward doing 1 week a month the load can be spread. But we do need a Scout Leader to keep the Troop going.

Peter described the fun and adventure he has had over the last 18 years. Don't forget, it means scores of our children have been able to take part in all that fun too. It would be really sad if our current young people aren't able to have those adventures. Contact details below or at the back of the Cresset to discuss this or any other opportunities within Scouting. Thank you.

Linda Jones - Chair 1st Bottisham Exec Committee
lindakinglouis@aol.com

Copy deadline for the next issue is 11 december.

Please send material to the editor at BottishamCresset@gmail.com



FOUR SEASONS

PROFESSIONAL TREE SERVICES

Qualified & Professional Tree and Client Care

PRUNING ◊ LOPPING ◊ FELLING ◊ PLANTING ◊ REDUCING & RESHAPING
CROWN RAISING ◊ HEDGETRIMMING ◊ THINNING ◊ POLLARDING ◊ STUMP REMOVALS
OVERGROWN GARDENS PUT BACK IN SHAPE ◊ FRUIT TREES TREATED
LOG & WOODCHIP SALES

FREE ESTIMATES & ADVICE WITH NO OBLIGATION

For quality jobs at a competitive price call:
01353 721665 – Mob 07771707921

All work carried out to BS 3998 Standard
A genuine family business est. for over 30 years – Fully insured

The Name you can trust.
We offer a 7day cooling off period

WANTED

**ALL TYPES OF ANTIQUES, CURIOS & COLLECTABLES
POLITE, LOCAL BUSINESS EST. OVER 25 YEARS
IS LOOKING TO BUY THE FOLLOWING:**

- Old watches, clocks, scientific instruments ● Quality jewellery, costume jewellery, even items in need of repair ● Silver, silver plate, old copper & brass ● Glass, ceramics, china ● Militaria, weapons, medals, badges, uniforms, paperwork & photos ● Tribal art – masks, weapons ● Walking canes, sword sticks ● Sporting memorabilia ● Old toys, games and train sets ● Vinyl albums and singles ● Woodworking tools ● Furniture – antique up to 1970s

Anything considered – give me a call before you throw it away
POLITE & CONFIDENTIAL SERVICE. GOOD PRICES PAID.

STEVE DURRANT 01638 507037 OR 07740 591194

Email: svdservices51@gmail.co.uk

News from Bottisham Medical Practice Patients' Participation Group

Update from Bottisham Medical Practice: UK Health Surveillance Agency respiratory virus swabbing project. We have signed up to this project whereby any patient with viral or infective symptoms will be offered a nasal and throat swab. This is posted away and results are sent to the patient. The aim of the project is to see what are the prominent viruses circulating to help assist in planning for future viral treatments and vaccines.

IMPORTANT: Patient access to medical records through the NHS app. The NHS wants to give people better ways to see their personal health information online. We know that people want to be able to access their health records. It can help you see test results faster. It also lets you read and review notes from your appointments in your own time.

From 31 October 2023 you will be able to see all the information within your health record automatically. For most people, access will be automatic, and you won't need to do anything.

It's important to remember that these documents may, at times, contain information that could be upsetting, especially if they contain news of a serious condition. Some patients may prefer not to have access to their records. Some entries may cause distress surrounding recent or past medical events.

Great care is also needed in case private details might cause harm at home, should people in a difficult or pressured relationship be forced to show their medical record to an abusive partner. Anyone in such a position should make this clear to us at the practice, so we can take steps to keep you safe. This might mean removing access through the NHS app for the time being, or through a careful process where we hide sensitive things.

If you do not wish to have access please let us know. Either contact your GP or email via admin.bottishammedicalpractice@nhs.net

Keep up to date on our latest information <https://www.bottishammedicalpractice.nhs.uk>

Survey on Access to Primary Health Care: Healthwatch Cambridgeshire and Peterborough is launching a survey on 1st November 2023 to gather people's experiences of accessing Primary Care services, such as GP services.

This survey, which will remain open until 17th December 2023 is being conducted independently by Healthwatch Cambridgeshire and Peterborough with the support of NHS Cambridgeshire & Peterborough.

NHS Cambridgeshire & Peterborough understand how important local access to health services are, such as your GP Practice, and are keen to hear your experiences, feedback and thoughts on ways in which you currently access local GP services and how these could be improved.

This valuable insight will be used to help NHS & Cambridgeshire & Peterborough to shape how our local services are developed for the future to ensure they continue to meet local needs.

<https://www.healthwatchcambridgeshire.co.uk/form/primary-care-access-survey>

Continued on page 27



CAMBRIDGE ACUPUNCTURE

Dr Liang – Chinese Acupuncture Specialist

Migrain • Anxiety • Depression • Neck and Shoulder Pain • Back Pain • Sciatica • Arthritis
• Ankle Spring • Asthma

If you are suffering the problems mentioned above, please do not hesitate contact **CAMBRIDGE ACUPUNCTURE** by email or mobile phone to sort it out as soon as possible.

Opening Hours from 10am to 5pm, Monday to Friday.

APPOINTMENT ONLY.

MOBILE: 07375 331048

Email:

Bottishamacupuncturetherapy@gmail.com

Web: <https://cambridgeacupuncture.uk>

BURWELL COMPUTERS

SUPPORT • SALES • REPAIRS

 **01638 505930**

 **07901 556895**

support@burwellcomputers.co.uk

www.burwellcomputers.co.uk



An accountancy service that covers everything your business needs

For more details contact Paul on

 info@cb25accounting.co.uk

 07803 782423  [cb25accounting](https://www.facebook.com/cb25accounting)



Sales, servicing, repairs and sharpening of all types of garden machinery.

Collection and delivery available.

Friendly, local and professional service.



C.W.KIRK LAWMOWERS

01638 744 349

CWKIRKLAWMOWERS.CO.UK

44 NEWMARKET ROAD BURWELL CAMBRIDGESHIRE CB25 0AE

Continued from page 25

Christmas and New Year: Please remember to order your medications in good time to allow for the bank holidays over this period, also to ensure you have enough to last you over this time.

The Patient Participation Group: As usual we are looking for new members to join the committee, all patients of this Practice are eligible. Please contact our chairman as below to find out more information and how you can be involved.

Facebook: Bottisham Medical Practice is now on Facebook.

Change of Meeting: We have postponed the next meeting from December. This will now be at 6.30pm 25 January 2024 in the Surgery waiting room. If you wish to join our meeting, please email our chairman s.j.gilson@btinternet.com.. Or speak to reception.

We wish you all a Happy Christmas and good health for 2024.

NAAFI Break: Next one 6th December at Anglesey Abbey Redwoods Restaurant 10am. See message from Gary below.

The NAAFI Break coffee morning for Veterans and their families is almost one year old and it would not have succeeded were it not for those that come along on the first Wednesday of each month for a brew and a laugh. I would like to take this opportunity to express my huge gratitude to all who have supported me and my fellow comrades enabling us to feel connected within our community. Special thanks go to the Bottisham Medical Practice for allowing us to promote this in the Village magazines, to the Social Prescriber Chloe who has provided support, along with Steve and Jenny from the Patients Group. None of the above would have happened if it wasn't for Anglesey Abbey who allowed us to meet there so we veterans had a welcoming safe place to meet, all the staff have been kind and helpful and make us feel very welcome. So, a massive thank you to everyone and I wish you all a very merry Christmas and look forward to a successful 2024.

Gary.

Bottisham and District Gardening Club

At our AGM in October it was reported that we have had a successful year with interesting speakers and membership has increased. Funds are healthy. Several members and their partners attended a Spring lunch at Newmarket Golf Club and the summer outing on a lovely sunny day to Helminghan Hall was enjoyed. The committee were re-appointed en bloc but Margret Cole is the new Secretary replacing Julia Green. The committee were thanked for their hard work.

We did not sit in orderly rows but around the large table in the Poppy Room and were served wine and nibbles. We enjoyed 2 games of Bingo which caused a lot of amusement.

Our Christmas party will be on **Tuesday 19th December** (*note the change of date*). The competition will be a Christmas table decoration.

Meetings are held in the Poppy Room at 7.30pm.

Sylvia Overton

Have you ever stopped of a morning to sit down to have a cup of coffee in the house on your own, and thought it would be nice to talk to somebody?
Well you can and very easily too. Come along to Meeting point on a Wednesday and have that cup of coffee with like-minded company



**in the Poppy Room at the
Bottisham Community Sports
and Social Club**

A place where you can meet old friends
make new friends, relax, chat and enjoy
coffee, cake and biscuits in a friendly
relaxed atmosphere.

**EVERYONE WELCOME
ADMISSION FREE**

PREMIER INVESTMENT MANAGEMENT SERVICES LTD

INDEPENDENT INVESTMENT ADVISERS Authorised &
Regulated by the Financial Conducts Authority

Specialist in Isa's & Isa Transfer's
Investment Planning & Portfolio Management

To arrange a free consultation ring **01223-882422** or email
pims@globalnet.co.uk or visit **www.pims-uk.com**

BOTTISHAM

SCHOOL OF MOTORING

Tel: 811556

*All qualified instructors
with extremely high
1st time pass rates*

Bottisham Community Library Association

Just dates this month as Cambridgeshire Libraries have provided an information sheet which is included below in this month's magazine.

Story and Rhyme Time on Saturday 2nd December

Lego Club Saturday 9th December Christmas.

We shall be closing for the Christmas period after the session Thursday 21st December and reopen on Tuesday afternoon 2nd January 2024

INFORMATION FROM CAMBRIDGESHIRE LIBRARIES

Libraries provide a warm and welcoming space for everyone in our community. This winter, visit your local library and sign up to the free membership - if you haven't done so already. You will find many resources to borrow for free, activities for you to join in and a place to meet people or to simply sit and read.

Services and facilities at Cambridgeshire Libraries include:-

- Free WiFi, computers and internet access.
- Laptops and smart devices for loan, free of charge.
- Free social activities and events for all ages -- rhyme times, talks, board games, drop-in coffee mornings, craft groups etc.
- Free books, learning resources and online references.
- Free e-magazines, e-newspapers, e-books and e-audio books.
- Information about county-wide and national services, community resources and local support.
- Free ferrule replacement service for walking-aid users.
- Safe Space for victims of domestic abuse.
- Vibrant and inclusive arts events offered by The Library Presents.
- Support and advice to small business, entrepreneurs and inventors provided by the Business & IP Centre Cambridgeshire (BIPC).

In addition:

- Library@Home service visiting people who are eligible and bringing them books and other library resources.
- Mobile libraries making over 380 stops in rural areas across the county.
- St Ives, Histon, Soham, March and Rock Road Libraries offering extended hours via Open+.

Ask your local library to find out more.

Check our website: www.cambridgeshire.gov.uk/library

Call us on 0345 045 5225 or email Your.Library@cambridgeshire.gov.uk



Copy deadline for next issue is 11 December.

Please send material to the editor at BottishamCresset@gmail.com

ANGLIA TREE CARE

LARGE ENOUGH TO COPE • SMALL ENOUGH TO CARE

80% OF OUR WORK IS VIA RECOMMENDATIONS
TREE SURGERY & FELLING • HEDGE MAINTENANCE
STUMP GRINDING • FULLY QUALIFIED
FULLY INSURED • 24/7 SERVICE
All work carried out to BS 3998

Free Estimates Given within 7 days

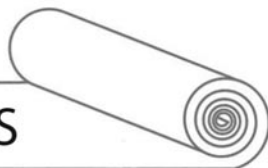


Tel. 01223 424454 • INFO@ANGLIATREECARE.CO.UK

M E M B E R
Guild of Master Craftsmen

PETER FISHER

CARPETS - WOODS - VINYL



A wide range of floorings supplied and fitted.
Please call for a free estimate and select in your home.

Tel: (Bottisham) **01223 811321**
Mobile: **07879 494 685**

Great service for
30 years

Whilst always 'touting for business' (appealing for ever more financial support) I am mindful of just how much the people of our area already regularly support EAAAA.

You make a HUGE difference to each and every one of our patients. Your donations funded over 2500 critical care missions we carried out over the previous year.

Over the year we have welcomed over 2400 new supporters giving regularly. Consequently, we now have almost 5000 amazing people sending us monthly gifts and over 125,000 of you play our weekly lottery. Our lottery alone has brought us in a record-breaking £6.3m, accounting for a substantial and vital part of our annual income.

Your ongoing generosity fuels our service - we receive no regular government or NHS funding and our costs are rising. We rely on your support to enable us to continue delivering - and improving - our service in such difficult circumstances. Regular unrestricted donations are the lifeblood of our operation - whether from our lottery, raffle, regular giving, or funding a mission outright as a Navigator Donor. It all combines to fund the lifesaving work we deliver together. With your ongoing support, we are confident that we are well placed to meet the challenges ahead and that we will continue to be there for local people across the four counties of East Anglian for many decades to come.

To find out more about EAAA logon to www.eaaa.org.uk - together we really do help to save lives.

Michael White

NEWMARKET COMMUNITY CINEMA

The Stable, 65 High Street, Newmarket. CB8 8NA

December 11th

Miracle on 34th Street (U)

Doors open at 6.30pm with the film starting at 7.30pm.

Admission is £6 which includes free refreshments.

If you would like to reserve seats, please ring 07756 853714.

Copy deadline for the next issue is 11 December.

Please send material to the editor at BottishamCresset@gmail.com



SG LAW

Plumbing & Heating Services

01223 803444

hello@sglawplumbing.co.uk

www.sglawplumbing.co.uk

BATHROOMS

HEATING

PLUMBING

SERVICING



Caring with head and heart.

AWARD-WINNING SUPPORT

From the leading local homecare provider

Reliable and flexible visiting care

Our individually-tailored packages are designed for adults of any age who require regular help or support in their own home. We cater for a wide range of needs, including:

- Assistance with personal care
- Administration of medication
- Companionship and sitting service
- Shopping and meal preparation
- Transport to medical and other appointments



**GREAT BRITISH
CARE AWARDS**
REGIONAL WINNER
2020



Live-in care – the simple and cost-effective alternative to residential care

We provide a bespoke live-in care service across Essex, Cambs, Suffolk and Herts. Each client benefits from their own unique blend of companionship, cooking and house-keeping and personal care designed to help them maintain their independence and continue living happily and safely in their own home. We also offer short-term respite care to allow family or private carers to take a well-earned break.

Call us in confidence 7 days a week on:

0800 411 8636

chesterfordhomecare.co.uk

Bottisham Community Sports and Social Club.



OPENING HOURS

Weekdays – 5pm to 11pm
Saturday - 12 noon to 11pm
Sunday - 12 noon to 9pm

Come along and enjoy!
Our outside games – Jenga- Connect 4, Quoits.
Plus, do not forget we show sporting events on
BT/TNT Sport.

HALL HIRE
Do you need a venue for a party or a
meeting in our newly refurbished
Poppy Room?
Contact the club for
details of our facilities for hire.

WHAT'S ON?

Saturday 2nd December - Christmas Party with Calamity Jane

Fun & Games for only £3 per child for members £5 for nonmembers - 4-6pm
Family Christmas Party, an afternoon of fun and laughter

Monday 18th December - Newmarket Town Band and our big Christmas Draw

Entrance - Free!

Come and join the band for a sing along.

NEW YEARS EVE - See the New Year in with 'Let's Get it on'

£10 a member or £15 for a non-member includes chilli supper.

A great band with great sounds. GET YOUR TICKETS NOW!

2024 events are being booked.

Monday 15th January Club - AGM

Are you interested in helping to run the club - Join the committee!

We need new people and new ideas.

Watch out for the 'The Numbers' in March.

Other events planned are quiz nights, cheese & wine evening, family fun days and
much much more.

Please refer to the website. www.bottishamsocialclub.co.uk for the latest information. If you wish
to be updated with the latest news, please email bottishamcsasc@gmail.com
31 Downing Close, Bottisham, Cambridge CB25 9DD Tel. 01223 812063

MARTIN BALL
♦♦♦
FIREWOOD & TIMBER

www.martinballfirewood.co.uk

sales@martinballfirewood.co.uk

Office • 01799 586 513
Woodyard • 01371 830 503
Mobile • 07980 258 003

Blunts Farm Yard
Thaxted
CM6 3PX



LM

GROUNDWORKS & LANDSCAPING

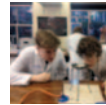
- Patios • Paving • Footings
- Drainage • Fencing & More

Tel: 01638 743627

Mobile: 07934 642716



**LANDMARK
INTERNATIONAL
SCHOOL**



A small international school in Fulbourn, South of Cambridge,
welcoming pupils aged from 4 to 16 years.

We have experienced and enthusiastic teachers delivering a broad and engaging curriculum to small classes of pupils from Britain and beyond. We offer excellent pastoral care and are non-selective academically. Transport via school minibuses from central Cambridge and surrounding villages.

To arrange a visit, please call:

Mary Greer on 01223 755100/07400 584015

or email mary.greer@landmarkinternationalschool.co.uk

www.landmarkinternationalschool.co.uk

Landmark International School is a registered charity.

The October meeting was not as arranged as our speaker Lucy Lewis was on duty in Cambridge and Pat Howard our President was ill, but fortunately we had a surprise speaker.

Gerry Bangs happily told us of his early years, growing up in a pub in Tottenham during the war and then detailing his National Service. He remembers seeing London on fire in the distance when the Germans came at night with their incendiary bombs, the noise from the anti-aircraft guns, spending time in the cellars. A hard beginning with a lack of men folk about - no dads, no uncles. He had to take or wear a gasmask to primary school and was aware of doodlebugs and V1 and V2 rockets. He was eventually evacuated to stay with an aunt and uncle in Newmarket but was glad to return home in 1945 and fondly remembers the street party to celebrate the end of the war. He won a scholarship to Tottenham Grammar School which he enjoyed and began as a trainee surveyor for the princely sum of £104 a year. He was then called up to do his National Service in the RAF. He spent 8 weeks at Cardington receiving drill training with a week of fatigues (peeling Spuds) and did his trade training at Compton Bassett as a radar operator. He was fortunate(?) to be sent to Hong Kong on the steamship Devonshire. The 5 week convoyed journey out meant he saw a lot of the world - elephants, flying fish, porpoises and went through the Suez Canal 3 months before the military action there. They had a few weeks stop off in Singapore staying at RAF Changi.

The entrance to Hong Kong harbour was most spectacular but the servicemen were soon sent up to the Nissen huts and radar station, their home for the next 20 months. There was very sophisticated equipment used 24/7 monitoring a 400mile radius and watching China, Formosa and Hawaii. All movements were recorded and sent both to Melbourne and the United States. Free time was strictly regulated but it did mean they were able to socialise and understand that people are the same all over the world. And all for the princely sum of 20p a day!

After a 4 week return journey he came home and met his wife!!! Most interesting.

Next meeting is our Christmas meeting with seasonal refreshments on Tuesday 12th December. Please bring your wrapped Secret Santa present(value £3) if you wish.

Meetings are held at 7.30pm in the Poppy Room.

Sylvia Overton

Our Aspirations and Options services invite you to our

Red2Green

6TH DEC

CHRISTMAS CAROL SERVICE

St. Mary's Church
98 High St
Swaffham Bulbeck
GB25 0LX

Carol service at the church will be followed by a fair in our barns
Light refreshments will be served
Christmas crafts made by learners available for purchase
Timings for the day to be released soon

OvenPad Cleaning Services

I will professionally & efficiently clean ovens, ranges, Agas, ceramic hobs, extractors, microwaves and BBQs.

It's a dirty job, why not give me a call?

Contact **Paddy Kelly** on

Tel: 01638 742703

Mob: 07752 631343

Email: info@ovenpad.com

Website: www.ovenpad.com

ANDREW EVANS

01954 780 999 – 01223 864335

email: andrew@omegaclean.co.uk

www.omegaclean.co.uk

- ✓ Carpet Cleaning
- ✓ Upholstery Cleaning
- ✓ Tile & Grout Cleaning
- ✓ Leather Cleaning
- ✓ Oriental Rug Cleaning
- ✓ Carpet & Fabric Protection
- ✓ Allergy Relief Treatment
- ✓ Odour Eradication
- ✓ Stain Removal
- ✓ Carpet Fitting

Family Business Since 1980



PEST PROBLEM?

CALL DRE PEST CONTROL

01954 230708

07789 502556

- Commercial & Residential
- One - off Call Outs
- Management Contracts

Cambridge & surrounding areas
www.drepestcontrol.co.uk





By the time you read this Newsletter the sun will have set on our Mustang (*see photo*) and the museum will have closed for this year. And what a year it has been, with our Wednesday opening being a great success.

Our events were also successful: Bottisham At War Forties Weekend in July drawing in the crowds, the classic car show in August brought approximately sixty vehicles, and the show in October was our best attended event ever with over 900 adults +children to see 142 classic cars, 9 military vehicles, 4 military bikes, and 66 assorted bikes and scooters.

On other open days 64 Hot-rods turned up, we also had a number of motor bike clubs that used our museum and café as a pit stop on their trips around East Anglia. We also opened for group bookings and hosted the Mighty Eighth Museum group from Savannah USA, a group of Canadians, the Scouts, and some school parties. We also started helicopter pleasure flights which will happen again next year.

The highlight for me was meeting 101 years old Captain John Luckadoo, a B17 Flying Fortress pilot who flew with the 100th Bomb Group at Thorpe Abbots Airfield in Norfolk and meeting Norman, a 102 year old Royal Engineer who worked at Bottisham Airfield laying the metal tracking on the runways in 1941. An honour to meet them both.

The museum opens again on Easter Sunday, March 31st 2024. On behalf of the museum, I would like to wish you all a happy Christmas and New Year and thank you for your support.

Charles Cook - Museum Volunteer



Fresh Flowers for All Occasions - Your local FLORIST

bouquets : weddings · funerals · workshops · parties · events

www.millblossomflowers.com

email: millblossomflowers@gmail.com

Tel: 07749 770286

Support local small business

33 Mill Road, Lode, CB25 9EN

SUMMIT



LANDSCAPES

PAVING - DRIVEWAYS - BRICKWORK
CARPENTRY - GROUNDWORKS



www.landscapingpaving.co.uk

PHONE: 01223-929394

News from Wicken Fen Nature Reserve

WINTER WILDLIFE WATCHING

Groups of winter thrushes are creating colourful sights and chattering sounds around the reserve. Corvids can be seen swirling overhead, particularly in the later afternoon just before dusk. There have been regular sightings of short-eared owls and large numbers of lapwing too, so it's a great time for getting your binoculars out, pulling on some wellies, and heading to the Fen for some wildlife watching.



FATHER AND MOTHER CHRISTMAS

At the time of going to press we have a few tickets left for midweek and Mother Christmas dates. See our website 'What's On' section for more details and to book.

WICKEN FEN'S TWELVE CREATURES OF CHRISTMAS

Explore the Woodland Walk and experience our new Winter Trail – our take on the classic carol, "The Twelve Days of Christmas". No French Hens or Gold Rings, but lots of the creatures that call Wicken Fen home.

Can you spot all the animals from each line of our carol? Games and activities to enjoy along the way.

No need to book, drop in with family and friends to enjoy some festive fun.

CHRISTMAS AND NEW YEAR OPENING

As usual, we are open every day over the festive season apart from Christmas Day. The Visitor Centre and shop are open from 10am to 4:30pm, and the Docky Hut Café is open from 10am to 4pm. It's a great time to get together with family and friends to stretch your legs in a beautiful place, and warm up afterwards with a hot drink and a snack or treat in the café.

WICKEN 125 PROJECT: FUTURE ARTEFACTS CERAMICS EXHIBITION

We had a great response to the ceramics workshops held over the summer at a variety of locations including Wicken Fen, Ely Market and Burwell Carnival. Over 300 artefacts were created, and we are holding an exhibition at Babylon Gallery in Ely for the month of January. You'll be able to see the artefacts and artwork by local creatives that were inspired by Wicken Fen and the fen landscape. If you came to a workshop, your piece will be displayed at the gallery, and there will be the opportunity to collect your artwork at the end of the month. See our website for more information about the exhibition



Hello neighbour

Bottisham's Co-op is open



Find us here:

12 High Street, Bottisham,
Cambridge CB25 9DA

Open 6.30am - 10pm, daily



It's what we do

Bottisham Bird Brain



I have a Christmas bonus for you this month! We're going to cover two species of 'Columbidae' which frequent our parks and gardens in considerable numbers: the Wood Pigeon and the Collard Dove. These characters may even be waking you up in the mornings with their relentless cooing!

The Wood Pigeon - *Columba palumbus* – is the UK's largest member of the Columbidae family and is easily distinguishable from its closest relative – the Stock Dove – by not only its size, but also by distinctive white patches on the adult's neck and wings. Vermin to some people and cute or funny to others, Woodies are pretty keen breeders, as you may have gathered from their enthusiastic mating habits, and they might breed year round if food is in abundant supply. But their usual timing is to lay eggs in August and September so that their chicks can be fed on the ripening grain the following year. Their courtship is an amusing affair which includes a wing-clapping display flight by the male, followed by a spell of strutting, bowing, necking and caressing with the bill before the female succumbs to his charms. This traditionally takes place on the ground but I can tell you that the Spring Lane residents often seem to prefer performing on the garden walls!

Its present ubiquity in the UK (five million pairs) is primarily due to its flexible diet. Mostly vegetarian, it favours fleshy leaves, seedlings and buds as well as any type of seeds and grain and even acorns, but will also take ants, larvae and worms where available. The tendency to devour cereal crops renders the Wood Pigeon an agricultural pest and it is legally shot in most European countries. However, before you reach for your shotgun or catapult, remember that all wild birds and their nests and eggs are protected by UK law, and you would be prosecuted under the Wildlife and Countryside Act for shooting pigeons in your garden unless you can prove that the birds are causing a specific problem in the area. You would be expected to employ other methods of discouragement first, e.g. netting, wall/roof spikes, decoy kites and, apparently, WD40...!

On to another of the commonest birds in our parks and gardens: the Collard Dove, *Streptopelia decaocto*. This is a more delicate bird in stature and colour; a pinkish buff-grey with a distinctive thin black collar and a red eye. They weren't always common though. With a current UK population of c. 800,000 pairs, they are responsible for one of the most remarkable expansions of range in the whole history of ornithology, despite being non migratory!

(Continued on page 43)

Foot Works FHP Ltd

MCFHP MAFHP CPD NT

Mobile foot health professional in the comfort of your home

Services include...

Nail cutting / filing
Corns / Callus / Verruca
Ingrowing toenails treatment
Thick nail reduction
Fungal infection
Dry/Hard skin/Special treatment for cracked heels
Assessment of the diabetic foot

Weekends Available Mobile:07708 386396

E-Mail: wilmasonia@hotmail.co.uk



Insured, Accredited and DBS checked

Member of the British association of the foot health professional

Stitchshed Sewing

(Formerly Little Stitches)

Repairs and Alterations

I am based locally and can help you with clothing alterations & repairs, curtains, blinds and cushions

Sewing Classes

If you wish to learn to sew, then please call for a chat.

Classes at the Stitchshed or private home tuition available for:

Dressmaking
Patchwork and Quilting
General craft sewing

Getting to know your sewing machine!

Tel: 01638 745160

Mobile: 07449 954590

Email: stitchshed@gmail.com

Web: www.stitchshed.blogspot.com

Little Legs
MONTESSORI



Fassage Hall, Lode

*A calm, child led
environment
where children
learn through
meaningful play.*



- Montessori Preschool For children aged 2-4 years
- All types of government funding accepted
- Experienced, highly qualified staff.
- Using the Montessori method of education
- Weekly Forest School sessions

GET IN TOUCH:

07572 121463

littlelegsmontessori@gmail.com

littlelegsoflode.com



OPENING TIMES

Monday and Wednesday

9am-3pm

Tuesday, Thursday, Friday

9am-12.30pm

(Continued from page 41)

Originally an Asiatic bird, the Collard Dove was virtually unheard of west of the Balkans before World War II. The cause of their proliferation is not known, but Collard Doves appeared in Germany in 1945, the Netherlands in 1947, Scandinavia in 1949 and Belgium in 1952. The first UK bird was recorded in Lincolnshire in 1952 and the first nest was found in Cromer, Norfolk in 1955. Now they occur in every corner of Britain and throughout the entire Western Palearctic – including Morocco, the Canaries, the Faroes and even Iceland (although not breeding there yet). They have colonised most states of America, too, but this is thought to have resulted from the escape of a collection of captive birds in Nassau in the 1970s.

Like the Wood Pigeon, the Collard Dove is an unwary, gregarious bird and not over-fussy about diet. Predominantly a seed and grain eater, it will also take fruit, small insects and whatever is on offer on your garden bird table. It is also a keen breeder, raising up to three or even four broods per year, which may possibly be a clue as to why it has so energetically sought out ‘pastures new’ in its extraordinary push westwards.

And for an extra Christmas bonus: we must just spare a moment to think about the Collard Dove’s close relative, the beautiful, dainty Turtle Dove (*Streptopelia turtur*), a real British favourite of the past. Whilst ‘Decaecto’ was enjoying the freedom of Europe and beyond, poor ‘Turtur’ has suffered an alarming decline over the past few decades and is now classified as officially ‘vulnerable’. In fact, it’s probably 20 years since I have seen one, even though I believe they are present in East Anglia, albeit in extremely low numbers. Contrary to the belief of some, this is not a case of one species driving out another; it is simply that Turtle Doves are particularly fussy eaters (seeds only) and are also susceptible to a parasite called *Trichomonas* which infects the trachea and oesophagus causing an early demise. The Turtle Dove has another threat not applicable to other Columbidae, too. It is the only migratory member of the family and is heavily persecuted in Africa and south Europe by hunters. Together with the increasingly intensive farming of its feeding grounds on both continents, this bird’s struggles are hardly a surprise.

As with other troubled species, there is an official support group working towards improving things for the Turtle Dove. If you’d like to know more – including what you might do to help the recovery – go to www.operationturtledove.org.

Anyway, whatever your feelings about any of the birds in the Columbidae family, may I take this opportunity to express the hope that you are visited by the White Dove of Peace for the forthcoming Christmas season.

TTFN Gerry Daish

**Turn me loose from your hands
Let me fly to distant lands
Over green fields, trees and mountains
Flowers and forest fountains
Home along the lanes of the skyway.**

from Skyline Pigeon, Bernie Taupin & Elton John

Tutor



Experienced tutor:
Fully qualified former primary school
teacher and home educator based in
Little Wilbraham

Expertise in:
Primary
Key Stage 3: Maths, English,
History & Geography
Study skills & revision techniques

For information and to arrange a free
meeting/consultation contact:

Anne-Marie McCubbin BA(Hons) PGCE
email: info@wingstoflyeducation.co.uk
tel: 01223 811939

SHANE MAUREL HANDYMAN SERVICES

ALL TYPES OF DOMESTIC WORK
UNDERTAKEN

From:
**Plumbing,
Carpentry
Gardening
Electrical
Tiling**
to
Moving Furniture



**I WILL DO THE
LOT!**

Tel: 07518 644537
Email: shapiemau@gmail.com

STEPWISE FOOTCARE



Clinic-based Podiatry

ALONGSIDE GENERAL FOOTCARE WE OFFER A
RANGE OF SPECIALIST TREATMENTS INCLUDING:

- *Children's foot problems*
- **Lunula Laser™** fungal nail treatment
- **Swift Microwave** for verrucas
- *Biomechanical assessments*
- **MotionMetrix** gait and running analysis
- **SIDAS** bespoke orthotic insoles
- *Diabetic foot care*
- *Nail and minor skin surgery*
- **Wilde-Pedique** toenail reconstruction

Tel: 01638 741973

HCPC Registered | RCoP Accredited Practice
stepwise-footcare.co.uk

Unit 1, 10 Ness Road, Burwell, Cambridge CB25 0AA

The Upholstery Barn



- Fulbourn-based upholsterer offering traditional and modern reupholstery, repairs and re-covers
- Bespoke footstools & soft furnishings

Contact:

Anne McGarvey
T: 07986027807

E: camupholsterybarn@outlook.com
www.theupholsterybarn.co.uk

THE BELL PUB FUNCTION ROOM AT 7:30PM

BOTTISHAM BOOK CLUB

Every 1st Wednesday of the Month - A relaxed social gathering

.....

BOTTISHAM BAKING CLUB

Every 2nd Wednesday of the Month

.....

WOOL & WINE WEDNESDAYS

Every 3rd Wednesday of the Month

.....

KEEN KNITTER?

CRAZY ABOUT CROCHET?

MAD FOR MACRAME?

Bring your needles and balls of wool!

A relaxed social gathering for all levels of skill and interest

.....

BOTTISHAM BOARD GAME CLUB

Every 4th Wednesday of the Month



Need a little extra Financial Help?

We don't have a magic money tree, but we may be able to help!

BOTTISHAM LOCAL CHARITIES

***Bottisham Local Charities can offer support to people with a minimum of two years residence in the village**

For further information or an application form contact the Clerk:

bottishamlocalcharities@gmail.com

01223 813774 or 0792 042 5154

ARCHITECTURAL DRAWINGS

FOR

PLANNING & BUILDING REGULATION APPLICATIONS

NEW PROPERTIES, EXTENSIONS, LOFT CONVERSIONS ETC

CONTACT US now to arrange a FREE on-site meeting at your convenience to discuss your project.

ELY DESIGN GROUP

'Architecture by Professionals'

www.elydesigngroup.co.uk

01353 649649

mail@elydesigngroup.co.uk

Chiropody

In your own home

Save £5

off your first treatment
when you present this advert.

Call **01638 814174** for an appointment

Daniel Harris BSc Hons MChS

Fully qualified and Registered with Health Care Professions Council

Bottisham Vehicle Services Ltd.

Reliable, Friendly, Professional
Service and repairs to all makes,
MOT testing, tyres, air conditioning
Courtesy car available
Local collection and delivery

10 Tunbridge Lane, Bottisham, Cambridge CB25 9DU
01223 811919 • simon@bvsltd.net • www.bvsltd.net

Bottisham Vehicle Services Ltd.

Reliable, Friendly, Professional
Service and repairs to all makes,
MOT testing, tyres, air conditioning
Courtesy car available
Local collection and delivery

10 Tunbridge Lane, Bottisham, Cambridge CB25 9DU
01223 811919 • simon@bvsltd.net • www.bvsltd.net

0%
FINANCE AVAILABLE

How will your fence look after another UK Winter?



Install a ColourFence before the Spring and you'll be maintenance-free until 2048!

PREVENTION IS ALWAYS BETTER THAN CURE.

The moment a fence falls or breaks, you have to deal with third party damage, security and privacy issues, neighbour quotes, the expense and inconvenience - all at once. Alternatively, a simple call to ColourFence can head off all your problems for the next 25 years! Virtually maintenance-free, before the Spring growing season starts, now is the best time to see our great value, colours & designs. Free phone today.

The product is just what we were looking for and wish we had discovered it years ago. No more annual painting or waking up to fallen panels! We are very pleased with our new fence.

Mr & Mrs Green, Sandy

25

years!

Brown

Cream

Green

Blue

For a free, no-obligation quote, find out more via:
01223 811 160
colourfencecambs.co.uk

 **5 STAR**

25 YEAR
CLEARANCE

To see our wide choice of sizes, colours and designs - contact us today!

(Hose down) everal times a year. Terms & conditions apply. Ifreed Fencing Ltd. is a manufacturer appointed representative of Ideal Safety Solutions Ltd. (UK) Limited. Local Sales Solutions is a credit broker and not a lender. (FBN 844209). Finance available subject to status. *The rate offered is always provisional and will depend upon your personal circumstances, the loan amount and term.

MADE IN BRITAIN 

Deal
A Finance





J&J DRAKE



Fully approved electrical contractor

- All Work Certificated in Accordance with NICEIC
- Free no obligation quotations
- All aspects of electrical work undertaken such as re-wires, Periodic test and inspections, maintenance calls, New build Installations.
- However small you may consider your job it will be treated with the same attention to detail as every one of our jobs.

Your Local Electrician

Unit 24, Hall Barn Road Industrial Estate, Isleham, Ely, Cambs. CB7 5RJ
 Contact us on: 01638 781567 / enquiries@jandjdrake.co.uk



N.C.S.

**BRUSH ELECTRIC SWEEP
 ALL CHIMNEYS SWEPT**

- BIRDS NESTS REMOVED
- OIL & GAS BOILERS
- SOLID FUEL, STOVES FITTED
- SMOKE PRESSURE TESTING
- INSECT MESH, POTS, COWLS
- FLUE LINERS SUPPLIED & FITTED
- BIRD GUARDS & TERMINAL FITTED
- GUTTERS CLEANED & REPAIRED
- GENERAL PLUMBING WORK

**FOR FREE QUOTE CALL
 07824 727277 or 01638 662760**

EMAIL
NCS.NEWMARKET@YAHOO.CO.UK
 WEBSITE
www.ncsnewmarket.co.uk

*Send text or e-mail for 10% discount
 Answers within an hour. • Waiting time approx. 1-2 weeks

**VERY CLEAN • Public liability insurance
 - Competitive rates -**

The Lake District - Eden vale



HOLIDAY COTTAGE

Nr. Penrith Cumbria CA10 1QW
 AVAILABLE ALL YEAR ROUND

Immaculate and well-equipped modern holiday house, sleeps six, full central heating, double glazing and double garage.

Our holiday home offers every comfort, a real 'home from home' at reasonable rates, in a lovely village location with panoramic views.

**T: 01638 741926 or 741354
 M: 07519 493664
 for details**

All weeks £325.00

DB Electrical & Building Services

Dale Badcock

07718 122538

dbelectricalandbuilding@gmail.com

All domestic work undertaken

- Rewiring
- Lighting
- Burglar alarms
- Security Lighting
- Lighting design
- Controls specialist
- Renovations
- Alterations
- Kitchens & Bathrooms

91 Northfield Park

Soham

CB7 5XA

01353 720570

www.DBElectricalandbuilding.co.uk



Rebecca Golding

*now has her new salon
in Burwell*

Tues

9.30am-8pm

Thurs

9.30am-8pm



30 Years'

Experience

All aspects of

Hairdressing

Tel. 07742 997474

Free Parking at

67 Silver Street

Burwell, CB25 0EF



TIM PHILLIPS & Co.

Accountants

Independent, specialist service for:

Small Business • Self Assessment

Personal Taxation

Free initial consultation – no obligation

EASY, FREE PARKING

Copley Hill Business Park, Cambridge Rd., Babraham

Off A1307 between Wandlebury and Babraham

Tel: 01223 830044. www.tpaccounts.co.uk



My Village Handyman Services Ltd

- DIY Repairs & Odd Jobs
- Painting & Decorating
- Tiling & Flooring
- Gardening & Landscaping
- Patios & Decking
- Fencing, Sheds + Garden Studios
- Kitchen & Bathroom Installation
- Gutter Clear and Jet Washing
- Leaking Taps & Plumbing Jobs
- Carpentry & Repairs
- Light Fittings, Sockets & Electrical Works
- Studio & Summer House Builds
- Brickwork & Small Builds
- New Doors or Locks
- Security & Garden Lighting



If your job is not listed, get in touch I'm sure we can help
Free no obligation quotes and advice provided
Your very local Handyman

Contact us to arrange a visit or quote

Call: **07500876376** or **01223 881700**

Email: info@myvillagehandyman.com Web: myvillagehandyman.com

K.J.P.

Building/Maintenance



Including:

Design, landscapes, patios, fencing,
gardening, decking, painting,
decorating, tiling, all interior work,
etc.

Tel: 01223 812021 or
mobile 07799 504043



SANICLEAN

DRAIN & PLUMBING SERVICES

R. BRISTLEY Est. 1974

9 Collings Place, Newmarket

- *Drains Unblocked Fast*
- *Toilets, Baths and Sinks*
- *Guttering and Downpipes*
- *Drain repairs and CCTV Surveys*
- *High Pressure Water Jetting*
- *Domestic and industrial*
- *All Work Guaranteed*

Newmarket (01638) 662439

Mobile 07970 038404

www.rbristley.co.uk

**FREE
Estimates &
Advice**



BRADSTONE

- All Driveways & Block Paving
- Site & Garden Clearance
- Driveway Cleaning & Sealing
- Fencing, Trellis Work & Decking
- Patios & Paths
- Turfing & Seeding
- Concrete Crushing
- Grab Hire & Digger Hire

amsbuildingandlandscaping.co.uk

OFFICE: 01638 721 893 | SITE: 07789 261 266

HARRISONS OF BURWELL LTD

Plumbing and Heating

FREE ESTIMATES GIVEN

Gas Boiler Servicing

Clarence House, 7 Ness Road, Burwell, Cambs CB25 0AA
Telephone: Newmarket 01638 742873 - Mobile 07932 773515
email: harrisonsofburwell@gmail.com

Gas Safe Registered

HAYDEN

THE CLEANING SPECIALIST

Merrywood
8 Lode Rd. Bottisham CB25 9DJ
01223 813766 or 07919561665
Email: hayden.woodruff@btinternet.com

WOULD YOU LIKE YOUR CARPETS
OR UPHOLSTERY CLEANED?

HAYDEN IS LOCAL TO THE AREA,
OFFERING FREE QUOTATIONS
AND ADVICE

WE ALSO CLEAN WINDOWS WITH
OUR NEW REACH AND WASH
SYSTEM OR TRADITIONAL, YOUR
CHOICE

k-domestic electrical solutions



Complete installations & rewires
Small and large alterations
Lighting
Internal & External work
PAT testing
Periodic Inspection & Reports
Full Inspection, Testing,
Verification & Certificate issue
LED
Under Floor Heating
Voltage Optimization

your **local** electrical service of choice and recommendation

Karl Howe
01638 610438 M: 07541 008613

Email: enquire@k-elecsolutions.com Website: www.k-elecsolutions.com

Fully qualified Part P and 17th Edition

**City &
Guilds**
Qualified





Sam's Mobile
Hairdressing

07905722058

S. NEAL
Carpentry and Small Works

Offering a high quality
carpentry and small works
service in Bottisham and
the surrounding area.

FLOORING · HANGING NEW DOORS
KITCHEN RENOVATIONS · DECORATING ·
TILING · LANDSCAPING
BESPOKE CARPENTRY



07703 043243

SNealCarpentry@Gmail.com
@S.Nealcarpentry

**HAVE YOU
THOUGHT OF
ADVERTISING
LOCALLY?**

**YOUR CUSTOMERS MAY BE
CLOSER THAN YOU THINK.**

This space could be yours
at very reasonable rates,
both long term (cheaper) or
short

*Email the Editor for details:
BottishamCresset@gmail.com*

**BOTTISHAM COMMUNITY
LIBRARY ASSOCIATION**

LIBRARY OPENING HOURS

TUESDAYS

3.00-5.00 and 6.00-8.00

WEDNESDAYS

10.00-11.30

THURSDAYS

3.00-5.00

FRIDAYS

6.00-8.00

SATURDAYS

10.00-12.00am

*Working in Partnership with the
County Library Service.*

'Your Friendly, Local Wood Burning Stove Specialist'



VISIT OUR SHOWROOM!

Whitelands Farm
Newmarket Road
Bottisham
Cambridge
CB25 9BD

Mon – Closed

Tues – Closed

Wed – Closed

Thurs – 12.30 – 3.00pm*

Fri - Closed

Sat – 1.30 – 3.30pm (1st and 3rd Sat of the month only)*

Sun – Closed

(*Please phone or check our social media pages for changes during school holidays)

- Email & telephone enquiries dealt with Monday – Friday 9am – 5pm

 01223 703184

Email: sarah@cambridgestoves.co.uk

www.cambridgestoves.co.uk

CALL NOW FOR YOUR FREE, NO OBLIGATION SURVEY AND QUOTATION, OR MAKE AN APPOINTMENT TO VISIT OUR SHOWROOM

ALL ASPECTS OF BUILDING WORKS TO YOUR FIREPLACE UNDERTAKEN

FAST, RELIABLE AND EFFICIENT SERVICE CARRIED OUT BY QUALIFIED HETAS ENGINEERS

LARGE SELECTION OF WOOD BURNING STOVES ON DISPLAY

NOW SELLING SEASONED FIREWOOD!!



MOBILITY EQUIPMENT

STAIRLIFTS, SCOOTERS, WHEELCHAIRS, RISING CHAIRS AND
BEDS, WALKERS, TOILET & BATHING AIDS, KITCHEN &
HOUSEHOLD AIDS, CONTINENCE CARE, FOOTWEAR

SPARES, SERVICE, HIRE OF EQUIPMENT
HOME VISITS AVAILABLE
FRIENDLY AND CONSIDERATE SERVICE GUARANTEED



SCOTSDALES GARDEN CENTRE
HORNINGSEA
CB25 9JG
01223 863908
www.orchard-mobility.co.uk

Monday to Saturday 9.00 – 5.00

BOTTISHAM PARISH COUNCIL

CHAIR - JON OGBORN _____ jon.ogborn@bottisham-pc.gov.uk

VICE CHAIR - JOHN WILSON _____ john.wilson@bottisham-pc.gov.uk

PARISH COUNCILLORS

NADENE CUNDELL _____ nadene.cundell@bottisham-pc.gov.uk

MARK OVERTON _____ mark.overton@bottisham-pc.gov.uk

STEVEN O'DELL _____ steven.odell@bottisham-pc.gov.uk

NEIL WINKCUP _____ neil.winkcup@bottisham-pc.gov.uk

JAWAHAR SWAMINATHAN _____ jawahar.swaminathan@bottisham-pc.gov.uk

JOHN AUSTIN _____ john.austin@bottisham-pc.gov.uk

SAVANNAH LAURENT _____ savannah.laurent@bottisham-pc.gov.uk

MARIA SOCEA _____ maria.socea@bottisham-pc.gov.uk

REHANA SHAKER _____ ehana.shaker@bottisham-pc.gov.uk

PARISH CLERK

SAM CHAMBERS-TURNER - 41 Stow Road, Quy, CB25 9AD
_____ clerk@bottisham-pc.gov.uk - Tel: 07369248998

DISTRICT COUNCILLORS

CHARLOTTE CANE _____ charlotte.cane@eastcambs.gov.uk - Tel: 07976 607512

JOHN TRAPP _____ john.trapp@eastcambs.gov.uk - Tel: 01223 812120

COUNTY COUNCILLOR

ALAN SHARP _____ alan.sharp@cambridgeshire.gov.uk - Tel: 07794 292941

Useful Information

Bottisham Website:	www.bottisham-pc.gov.uk
Parish Council Chairman: Jon Ogborn, jon.ogborn@bottisham-pc.gov.uk	07486 372780
Parish Council Clerk: Sam Chambers-Turner, clerk@bottisham-pc.gov.uk	07369 248998
Holy Trinity Church: Stuart Field, Churchwarden	01223 604019
Roman Catholic Priest: Monsignor Eugène Harkness. Parish of St Philip Howard	01223 211235
RE:NEW/Lode Chapel: Rev. Alan Brand	01223 812558
Bottisham Surgery: Enquiries and Appointments	810030
Out of Hours only - Urgentcare Cambridge	111
Bottisham Library: Library hours, <i>see advert previous page</i>	01223 812354
Cambridgeshire Police HQ:	01480 456111
Cambridgeshire Police: (NON-URGENT MATTERS)	ring 101
In EMERGENCIES	ring 999
Local East Cambs Policing info: www.cambs.police.uk/Neighbourhood-Policing/East-Cambs	
Neighbourhood watch co-ordinator: kevin.g.evans@ntlworld.com	01353 614892
Bottisham Pharmacy:	812321
Bottisham Community Sports and Social Club: Secretary Bev Clowes, Bottishamcsasc@gmail.com	812063
Bottisham Community Primary School:	811235
Bottisham Village College, School:	811250
Evening Classes, Clubs and Youth Club Information	811372
Bottisham W.I.: Secretary - Jenn White • mrandjw@btinternet.com	811600
Bottisham Scout Group: Group Contact: Linda Jones	813040
1st Bottisham Rainbows/1st Bottisham Brownies: Kay Pearce	811055
Girlguiding Bottisham District: Cambs County office • www.cambseastguides.org.uk	01223 813917
Bottisham & District Gardening Club: Secretary: Julia Green	811467
Bottisham Bowling Club: Peter Clowes, Secretary	811565
Bottisham Carpet Bowls Club: Nora Watson, nora@gandnwatson.uk	812121
Bottisham Cricket Club: Chairman: Will Allen, Chairman@bottlodecricket.co.uk	07713 007757
Bottisham Youth Football Club: Adam Bridgland, adambridgland@hotmail.com	07764 488599
Bottisham Local Charities Trustees: secretary - Jonathan Barrett	07920 425154
Bottisham Pool Association: Manager - Harry Bubb	811121
Bottisham Royal British Legion Branch: PoC, Peter Walker;	811402
www.Britishlegion.org.uk/branches/bottisham	
Queen's Court Day Centre:	811905
East Cambridgeshire District Offices:	01353 665555
East Cambridgeshire District Councillors:	
Charlotte Cane, 34 Swaffham Road, Reach	07976 607512
John Trapp, 104 Commercial End, Swaffham Bulbeck	01223 812120
Cambridgeshire County Councillor: Alan Sharp, Alan.sharp@cambridgeshire.gov.uk	
.....	01638 507485/07794292941
MP for Constituency: Lucy Frazer, MP, lucy.frazer.mp@parliament.uk	
www.lucyfrazer.org.uk	
Cambridgeshire Trading Standards Helpdesk:	0845 3030666
Milton Road Tip: Apr to Sept – Weekdays 9.00am-8.00pm: Weekends 9.00am-6.00pm	860674
Oct to Mar - 9.00am-4.00pm	
CRESSET Editor: email: BottishamCresset@gmail.com	
Treasurer, Advertising rates and payment: Rhona Walker, 94 High St	811402
Distribution: Ian & Helen Cole	812573
Design/Artwork: ONG (Old Newton Graphics) • www.codge.com	01449 675548
Printing: Falcon Printing Services, www.falconprinting.co.uk, jason@falconprintingservices.com	891286

The Cresset: While every effort is made to ensure accuracy we cannot accept liability for any mistakes or misprints. The views of, or any opinions expressed, are not those of the EDITOR. The Editor cannot accept any responsibility for statements made in advertisements

MANCHETTS

Car Truck & Van Centre



Van Hire from £49

01638 661113

www.manchetts.co.uk

1 Victoria Way Studlands Industrial Estate Newmarket Suffolk CB8 7SH

E.C. AUTOCARE

(Est. 1980)



SERVICING & REPAIRS
Cars & Light Commercials
Diesel & Petrol



MOT TESTING STATION

**Servicing to all makes of Cars
& Light Commercials**

- ✚ **ENGINE MANAGEMENT DIAGNOSTICS**
- ✚ **TYRE - BRAKES - EXHAUSTS**
- ✚ **AIR CONDITIONING SERVICING**
- ✚ **GEARBOX SPECIALISTS** MANUAL & AUTOMATIC

FAST, FRIENDLY, FAMILY BUSINESS

56 HIGH STREET, BOTTISHAM

Also at

A1303 SERVICE STATION, BOTTISHAM
(behind Brian McKay)

Tel.01223 811122 or 01223 812357

