

June 2023

THE 
Cresset



News, views and what's on, in and around Bottisham



What a lovely month May was. I don't mean the weather which was so-so. I mean the happy aura which surrounded the coronation of King Charles 3rd. For those who remembered the last one in 1953, it would have been a time which brought back memories of childhood and what they were doing the time before. Nowadays we take it for granted that we would be able to see the whole event laid out for us on TV. Back in '53 it was a big thing being able to watch it from our homes. Back then it was only people who lived in London who could watch TV and only 2 million sets had been purchased by the public. Yet 20 million people watched it! That is 10 people per set. It was very much family viewing with families crowding round the very small (by today's standards) screens showing very grainy black and white pictures.



This time, we all sat in front of our big screens (saw one in Curry's the other day - 75"!!) on the Saturday and watched the spectacle unfold. We sympathised with all the poor soldiers getting soaked in the persistent rain that fell.

Then on the Sunday, Bottisham had a party in the Sun! The organisers did a wonderful job and should not have had their doubts about people turning out. They did in droves. From Lunch picnics on the dirt hills to BBQ's and music in the evening, from mid-day fun at Queen's Court to afternoon Teas at the Social Club, people came out and had a great day. At the Social Club, there was a Children's entertainer and Morris dancers in the afternoon. Then in the evening, music and singing at the Social Club. It proved a very satisfying day all round. The Collage of pictures opposite show how much fun was had by all. If you see yourself in any of the picnics and want a copy, email the editor at Bottishamcresset@gmail.com.

One other event over the weekend was the wonderful display of flowers done by the ladies in the church. They were magnificent. Tea and cake there as well. They gave me the excuse to use one of the displays as our front cover this month with pictures, thanks to Stuart Field.

The magazine this month also has all the usual articles and reports.

Bird Brain's lovely article gives me several flash backs to my youth. Every year we used to go up to the NW of Scotland and stay next to a farming croft right on the coast. We were always there when they were making the hay and we used to be given the job of raking up the hay for it then to be stacked up in the little 'houses' which were then transported by tractor to the barn for the winter. Wonderful memories.

The constant soundtrack to those long hot days was the song of the Skylark high up above. You could look all you liked, but seldom saw them until they would drop quickly to the ground.

John Austin gives us the second of his very useful articles, which gives us lots of information on local transport and more.

I hope you enjoy this month's read and **please note the early submission date for next month's magazine.**

Your Editor.



Please note that due to holidays, the copy deadline for a combined JULY/ AUGUST magazine is the 12th June.

Please send material to the editor at BottishamCresset@gmail.com

News From Holy Trinity Church Bottisham

Highly Successful Coronation Celebration Service.

Wow! What an amazing weekend. On Saturday, while it poured with rain, most of us sat watching the television relay of the splendid sights in Westminster Abbey while our King and Queen were crowned and the throngs of people celebrating along the Mall. Then on Sunday it was the turn of Bottisham. It was with some trepidation that I entered the church on Sunday morning, magnificently adorned for our fantastic flower festival; 'Will they come?' I said to myself. But I need not have worried. They came, and by 10.15am



numerous people were pouring into the church to admire our wonderful display and subsequently partake in the specially created service to celebrate the Coronation.

Magnificently led by Bottisham resident Rev. Keith Morrison, we sang our favourite hymns while admiring our surroundings and listening to relevant Bible readings. I am delighted to report that the occasion was one of the best attended worship services since before the pandemic. No one was in a hurry to leave - chatting and enjoying tea and coffee after the service. Even later there was a constant stream of people coming to admire the flowers throughout the rest of the day. Very many thanks to all those who helped make it such a very successful part of the Village Coronation Celebrations.

I am delighted to report that as of the time of writing this article, the sum raised by our Easter Gift Day has risen to nearly £6,000, donated to the church, which is a magnificent response to our Appeal. I would like to thank each and every one of you who has donated. This sum will help to support employing an architect to survey the roof, prior to getting an estimate for the much needed repairs and probable replacement of the lead on the roof.

For the next couple of months our church services will revert back to our normal pattern. Revd. Keith Morrison will lead us for Holy Communion on the first Sunday of the month while Sarah Maxwell will take a service of Morning Prayer on the third Sunday. Our toddler group will continue to meet on a Tuesday morning starting around 9.30am. All are very welcome to attend. A small team continue to take a service monthly at Hilton Park and Oaklands.

I hear on the grapevine that at least one person is interested in applying to be our new vicar and so I hope that I will be in a position to report some good news in the July edition of the Cresset.

We look forward to welcoming you to any of our services.

Stuart Field - Churchwarden

Contents

Services in the Anglesey Benefice.....5	New Phone App to Help Addenbrooke's and Rosie Patients Navigate Hospital.....25
Sales, Wants and Swaps.....5	Bottisham Airfield Museum.....27
Parish Council Report.....7 & 9	Public Transport Matters29 & 31
Planning Notes.....9	News from Wicken Fen Nature Reserve.....31
District Councillors' Report.....11	Bottisham and District Gardening Club.....33
History of the Cresset.....13 & 15	Bottisham Bowling Club35
Bottisham WI.....15	Anglesey Group Mothers' Union....37
Neighbourhood Watch17	Bottisham Bird Brain.....39 & 41
Bottisham Community Sports and Social Club.....21	Community Herb Bed News.....49
News from Bottisham Medical Practice Patients' Participation Group23	Anglesey Abbey51



Dear friends in our local community,

Lode Chapel will be open from **10am to 1pm on Saturday 10th June**. We will have a large Scalextric track set up - why not challenge your family, friends and neighbours to a race!? We will also have lots of cake, tea, coffee, juice for you to enjoy, and a table-top sale with some things that may be of interest to you.

You will find us just set back from Lode High Street, opposite the Post Office.

We would love to see you!

**Saturday 10th June:
Cars, Cake and Company
at Lode Chapel.**

Reconnect to your life

Whatever your hearing difficulty, angli-EAR Hearing uses the most up-to-date tests and equipment to find the best solution for you.

Where to find us:
Audiology House (Cambridge)
15 Woollards Lane
Great Shelford
Cambridge
CB22 5LZ



Book your
FREE
ear health
check today

**Independent audiology
experts you can trust**



Hearing
Assessments



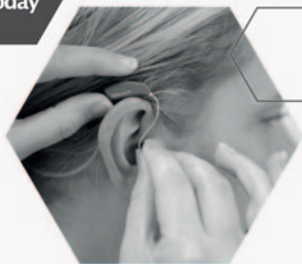
Ear Wax
Removal



Hearing
Aids



Tinnitus
Solutions



BOOK ONLINE

www.angliearhearing.co.uk



01223 661399

info@angliearhearing.co.uk

Services in the Anglesey Benefice

Sun June 4th	9am	Online service on Zoom
	10.30am	Holy Communion - Bottisham
	4pm	Village Worship - Quy Village Hall
Wed June 7th	8 pm	C by C (a short contemplative service) – online via Zoom
Sun June 11th	9am	Online service on Zoom
		Holy Communion – Quy
	10.30am	Family Worship - Swaffham Prior
Sun June 18th	9am	Online service on Zoom
		Morning Prayer – Quy
	10.30am	Holy Communion, Swaffham Bulbeck
		Morning Prayer – Bottisham
Sun June 25th	9am	Online service on Zoom
	10.30am	Holy Communion (BCP) - Swaffham Prior
Every Thurs	10.30am	Holy Communion - Lode

**Please check the Church notice board for any changes to these details;
or email admin@angleseygroupparishes.co.uk, which is also the address to request
the Zoom link.**

You are very welcome to attend any of these services.

Sales, Wants and Swaps



IF YOU HAVE ANYTHING TO SELL OR WANT TO BUY OR EVEN TO SWAP, THEN THIS PAGE IS YOURS TO USE. Send details of Item, price and landline Phone Number to BottishamCresset@gmail.com. Max. 5 Items. Entries by 12th of the month for next months issue.

DESCRIPTION	PRICE	TEL
Edinburgh crystal trifle/salad bowl as new	£20	811026
Dartington Glass punch bowl, as new, in box	£20	811026



CALLING ALL COMMUNITY HEROES



People of all different ages, backgrounds & experiences make up a community

Enjoy living in Bottisham?

Think changes could be made?

Like a worthwhile & rewarding role in your community?

Then
BOTTISHAM NEEDS YOU!

Make a change & become a parish councillor

TO FIND OUT MORE EMAIL:
clerk@bottisham-pc.gov.uk

Parish Council Report

Firstly, I would like to thank everyone involved in planning and executing the very successful coronation celebrations. An enormous amount of work was put in by many volunteers and organisations to produce an excellent day - blessed with beautiful weather. It was great to see so many residents out and about meeting each other and enjoying the sunshine. Well done to everyone involved and especially to Tony Jolley, who took the initiative in setting up and steering the working group that oversaw the day.

Now to some key matters following on from the May Council meeting:

ELECTIONS

The recent District Elections took place on 4th May 2023, with a good turnout of 40.3% in Bottisham ward. Councillors Cane and Trapp have both been duly re-elected. 8 Parish Councilors stood for uncontested Parish Council re-election, leaving 4 seats vacant. I would ask you to consider if you could serve your community by filling these vacancies. We need people from all backgrounds and experiences, who reflect the community, so please don't discount yourself. If you feel that this is a way in which you might be able to support your community, please email the Clerk (clerk@bottisham-pc.gov.uk) and we would be pleased to discuss further with you.

The Parish Council would like to thank the retiring Councillors for all their efforts over the years and wish them well for the future.

BOTTISHAM GREENWAY

The plans for the Bottisham Greenway were discussed in Council after a recent online meeting with the Greater Cambridgeshire Partnership (GCP) - at which the detailed proposals were presented to us and we were able to suggest some improvements. Concern was raised that there was a lack of awareness within the wider community of the project and the Council is requesting improved consultation by GCP with residents. We have particular concerns about the plans for the Triangle and are hoping to have an on-site meeting with the project team to discuss these in more detail.

PROJECT PLAY

I am grateful that a resident has volunteered to lead the working group to explore options to purchase land and install a new play area. A first meeting of the group will take place on 12th June 2023. While a number of other residents have also volunteered to be part of the group, we would welcome additional members. Anyone interested in getting involved should contact the Clerk in the first instance.

NEW CEMETERY

After some final amendments requested by the County Flood Risk Officer, all the relevant parties have now approved our plans and I am optimistic that, by the time you read this, we will have obtained planning consent. Then commences the process of compulsory purchase by ECDC (which will take some months), during which time we will be inviting tenders for the construction phase. As I have learnt over the years nothing moves fast with this project, but I am hopeful we could be opening the new cemetery in 2025 - which may be just as our current cemetery reaches capacity!!

Continued on page 9

PROJECT PLAY VOLUNTEERS NEEDED

We all know that community playgrounds offer so many benefits to children; emotional, social and physical growth and help improve collaboration skills as just a few. They can be the heart of a community and a gathering space that can benefit everyone.

Unfortunately, as you know, we are severely lacking in space for this provision within Bottisham! Despite all best efforts to secure identified areas we have faced opposition by residents and landowners.

But we're envious of those in our neighbouring villages with play areas, aren't we?
So, how do we fix this?

Bottisham Parish Council are securing funds for the purchase of land but can't do all the work alone.

The Parish Council is asking you for your help?

Would you like to help and be part of a "Project Play" taskforce?

For more information or to volunteer email: clerk@bottisham-pc.gov.uk



SWAFFHAM BULBECK SUMMER THEATRE - proudly presents:

THE SORCERER

by W.S. Gilbert and Sir Arthur Sullivan

Wednesday 14th – Saturday 17th June 2023

Evening performances at 7.30pm and a Saturday matinée at 2.30pm

Doors open 45' before each performance

Downing Farm, Station Road, Swaffham Bulbeck, Cambridge CB25 0NW

Ticket prices Wednesday £9, Thursday £10, Friday and Saturday £12, matinée £8

via our website www.sbsummertheatre.com;

e-mail sbst.tickets@gmail.com or call 07708 577570

On-site parking; facilities for wheelchair users; licensed bar

For further information (not tickets) contact Ruth Dennis on 01638 730659

or by e-mail via the website

Continued from page 7

PARISH COUNCIL NOTICEBOARD

The village noticeboard by the Triangle has recently been damaged. An inspection has taken place and it was felt that the board was beyond repair. Therefore the Parish Council resolved to purchase a new recycled material board to replace the current provision. We intend in time to also review what upgrades may be required to other signs and notice boards around the village.

Jon Ogborn

CHAIR OF BOTTISHAM PARISH COUNCIL

Check out our website for the latest news, minutes and agendas, <http://bottisham-pc.gov.uk>

Planning Notes

a) New applications:

23/00421/FUL - Howgar House 41 Bell Road Bottisham Cambridge CB25 9DF.
Construction of one 3/4 bedroom, two storey dwelling, with off-street parking for two vehicles on garden land

b) Planning Applications approved by ECDC:

23/00179/FUL – 22 High Street, Bottisham. Relocate front door, replace and alter windows and doors, replace corrugated plastic roof to plain tile, install photovoltaic panels and internal alterations

22/01307/FUL – Temporary access to Ox Meadow building site from Bell Road

**HAVE YOU THOUGHT OF
ADVERTISING LOCALLY?**

YOUR CUSTOMERS MAY BE CLOSER THAN YOU THINK.

This space could be yours at very reasonable rates,
both long term (cheaper) or short

Email the Editor for details: BottishamCresset@gmail.com



Fresh Flowers for All Occasions - Your local FLORIST

bouquets : weddings · funerals · workshops · parties · events

www.millblossomflowers.com

email: millblossomflowers@gmail.com

Tel: 07749 770286

Support local small business
33 Mill Road, Lode, CB25 9EN

Chiropody

In your own home

Save £5

off your first treatment
when you present this advert.

Call **01638 814174** for an appointment

Daniel Harris BSc Hons MChS

Fully qualified and Registered with Health Care Professions Council

District Councillors' Report

Thank you to everyone who voted and especially to those who voted for us to continue as your Councillors. We are looking forward to continuing to represent Bottisham ward residents at the District Council.

Across the District the Lib Dems won the most votes - 18,831, the Conservatives came second with 18,226 votes and Labour won 8,489 votes. But the Conservatives won the most seats and the Council is made up of 15 Conservatives and 13 Lib Dems.

The Council's AGM will be on 25 May, where Committee membership, Chair of Council etc will be decided. This report is a brief review of the 2022/23 year.

REFUSE COLLECTION AND STREET SWEEPING

The service has now improved, but there are still issues. For example, there were some missed/late bin collections in January, because of problems with vehicles. And the delivery of the black bin bags was significantly delayed and was very patchy – we were still getting residents with no black bags in May. Despite these many shortcomings with the service, the Conservatives agreed an additional £500,000 fee to ECSS for the 2022/23 financial year and budgeted for a similar extra sum in the current financial year.

EAST CAMBS TRADING COMPANY

In April the Conservatives agreed a £7.5M loan to the Council's Trading Company. ECTC has drawn down £6m of this loan, leaving £1.5m to cover their cash flow going forward. The loan is due to be repaid in full by 31 March 2026

BUSES

In October, we nearly lost the number 11 and 12 buses. After a strong local campaign the Combined Authority funded the number 11 run by Stephensons, who also continued the number 12 route as a commercial route. We now have these routes for at least another year, but continue to press for improvements, not least to get the number 11 stopping at Bottisham.

MEET YOUR COUNCILLORS

We enjoyed our conversations with residents during the past few months, and listening to your views, your misgivings and your suggestions. We hold meetings most months, which are open to any resident without booking. People come to discuss ideas for making our villages even better to live in, concerns about Council services, or raise their own problems. Our next District Councillors' meeting is on Tuesday 20 June at 6.30pm at Swaffham Prior Village Hall. We have enjoyed going to social events in the ward, such as coffee mornings, and would be delighted to join in social events if invited. We are always happy to be contacted directly:

Charlotte Cane - charlotte.cane@eastcambs.gov.uk - 07976 607512

John Trapp - john.trapp@eastcambs.gov.uk - 01223 812120

FOUR SEASONS

PROFESSIONAL TREE SERVICES

Qualified & Professional Tree and Client Care

PRUNING ◊ LOPPING ◊ FELLING ◊ PLANTING ◊ REDUCING & RESHAPING
CROWN RAISING ◊ HEDGETRIMMING ◊ THINNING ◊ POLLARDING ◊ STUMP REMOVALS
OVERGROWN GARDENS PUT BACK IN SHAPE ◊ FRUIT TREES TREATED
LOG & WOODCHIP SALES

FREE ESTIMATES & ADVICE WITH NO OBLIGATION

For quality jobs at a competitive price call:
01353 721665 – Mob 07771707921

All work carried out to BS 3998 Standard
A genuine family business est. for over 30 years – Fully insured

The Name you can trust.
We offer a 7day cooling off period

WANTED

**ALL TYPES OF ANTIQUES, CURIOS & COLLECTABLES
POLITE, LOCAL BUSINESS EST. OVER 25 YEARS
IS LOOKING TO BUY THE FOLLOWING:**

- Old watches, clocks, scientific instruments ● Quality jewellery, costume jewellery, even items in need of repair ● Silver, silver plate, old copper & brass ● Glass, ceramics, china ● Militaria, weapons, medals, badges, uniforms, paperwork & photos ● Tribal art – masks, weapons ● Walking canes, sword sticks ● Sporting memorabilia ● Old toys, games and train sets ● Vinyl albums and singles ● Woodworking tools ● Furniture – antique up to 1970s

Anything considered – give me a call before you throw it away
POLITE & CONFIDENTIAL SERVICE. GOOD PRICES PAID.

STEVE DURRANT 01638 507037 OR 07740 591194

Email: svdservices51@gmail.co.uk

History of the Cresset

Sylvia Overton remembers.

Having to “hang up my boots” and stop my Cresset delivery round after 40 or more years, (broken femur) Ian Cole reminded me that I had been involved with the magazine since the beginning. Good exercise, a chance to see the many changes each month in both gardens and properties over the years. New volunteers always needed!

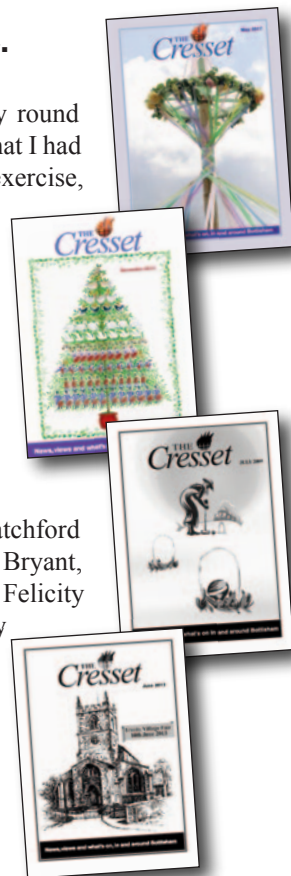
It brought back so many memories of past editors – Christine Bryant, Felicity McMahon, Valerie Leake, Hugh Rogers, Phil Seeney, Frank Shaw, Nick Martin and our present editor Peter Walker. We also had long serving typists, Winifred Clare, Margaret Gardiner and Phyl Shaw (who used an Amstrad word Processor) not to mention several most willing typists who filled in as necessary.

I missed the first meeting on 6th of April 1982 as did Pam Latchford and those involved at the start were Fred Alderson, Christine Bryant, Winifred Clare, James Fitch, Joan Denison, Tom Germany, Felicity McMahon and Susan Threlfall. Granta Press were initially involved with printing and funds were raised from donations and a grant of £100 from the Parish Council.

In October 1982 James Fitch was appointed Chairman, Joan Dennison became Treasurer later replaced by Mary Telfer and more recently by Rhona Walker, and Tricia McLaughlin was the secretary.

At that meeting a constitution was prepared, advertising rates agreed and the decision made that the adverts would be printed for the complete year and inserted monthly en bloc into the main copy. We also compiled a village information sheet which still appears today suitably updated.

There are no records of the number of copies printed and by whom until 1984 when I took over the printing of 700 copies each month (now 1000) and ran them off outside my working hours at the College on an old Roneo Duplicating machine. Winifred Clare from Lode Road typed up the stencils each month often at very short notice probably 12 pages in all. Any fliers representing village events were printed by the group involved and they inserted them into the magazine. Burwell Print Centre acted as printers for a while too. We are grateful to Colin Etheridge who took responsibility for the art work for the layout and presentation of the Cresset on his new Apple Mackintosh Computer. Neil Marshall also did this most ably for the next 4 years.



Continued on page 15



CAMBRIDGE ACUPUNCTURE

Dr Liang – Chinese Acupuncture Specialist

Migrain • Anxiety • Depression • Neck and Shoulder Pain • Back Pain • Sciatica • Arthritis
• Ankle Spring • Asthma

If you are suffering the problems mentioned above, please do not hesitate contact CAMBRIDGE ACUPUNCTURE by email or mobile phone to sort it out as soon as possible.

Opening Hours from 10am to 5pm, Monday to Friday.

APPOINTMENT ONLY.

MOBILE: 07375 331048

Email:

Bottishamacupuncturetherapy@gmail.com

Web: <https://cambridgeacupuncture.uk>

BURWELL COMPUTERS

SUPPORT • SALES • REPAIRS

 **01638 505930**

 **07901 556895**

support@burwellcomputers.co.uk

www.burwellcomputers.co.uk



An accountancy service that covers everything your business needs

For more details contact Paul on

 info@cb25accounting.co.uk

 07803 782423  [cb25accounting](https://www.facebook.com/cb25accounting)



Sales, servicing, repairs and sharpening of all types of garden machinery.

Collection and delivery available.

Friendly, local and professional service.



C.W.KIRK LAWMOWERS

01638 744 349

CWKIRKLAWMOWERS.CO.UK

44 NEWMARKET ROAD BURWELL CAMBRIDGESHIRE CB25 0AE

Continued from page 13

I think at this time the copies were assembled by Pamela and Derek Latchford in their home. and I know that Ken York was there with his trusty electric stapler. Ken was responsible for many years for the distribution to the many volunteer deliverers.

At some date the collation of the magazine was done in the Round Room at the College on the 4th Monday of the month. A very friendly group which included Colin and Pauline Sore, Pam and Derek Latchford, David Bennett and myself as regulars with plenty of further support by other villagers. Ken York did the stapling and we all earned a welcome cup of coffee provided by Pam.

With the appointment of Nick Martin as editor in 2003 we moved to commercial printing with Bury District Council and used Old Newton Graphics to include adverts in with the monthly reports and features. Collating and stapling were also included in the price. We had definitely moved into the 21st century. Inserts are now free for local groups and societies, church and school activities.

Our present printers are Falcon Print and I am pleased to say that under Peter and Rhona's firm leadership we continue to go from strength to strength.

I apologise for any errors or missing out on anybody involved over the years. Corrections would be welcomed by the Editor to update.

Bottisham WI

The speaker at our April meeting was local florist Jackie Lince of 'Mill Blossom Flowers.' Jackie had an administrative job and decided on a complete change of career. She had always been passionate about flowers, making posies and arrangements, so she decided to become a florist - then along came the pandemic and lockdown.

Undeterred she took on the task of learning new skills. She likes natural designs and always keeps the environment in mind when choosing vases, re-using containers and not using oasis. She uses flowers from local farmers wherever possible and in 2021 she acquired a small patch of land in the fen to grow her own too. She is a member of the Flowers from the Farm Network which supports small flower growers to encourage everyone to embrace seasonal British flow-ers. Her business is doing well, providing flowers for all occasions. You may see her at local Farmers Markets where she also sells candles and items she has made.

During her talk Jackie made some lovely arrangements and these were raffled later. Her website address is www.millblossomflowers.com

Arrangements were underway for the Coronation weekend, cakes etc. and the Craft Meeting on 2nd May had afternoon and evening sessions. The Annual Group Meeting in June is at Burwell and the speaker is Dimitra Frangas, a crafter and upholsterer. Several outings & events organ-ised by the Cambridge Federation of WIs were advertised.

OUR NEXT MEETING IS ON TUESDAY 20th JUNE

David Duker will be talking on "One of our own - WW2 Fighter Pilot"

Meetings are held at 7.30pm in the Poppy Room at the Sports & Social Club

If you are not a member and thinking of maybe joining the WI - please join us!

Have you ever stopped of a morning to sit down to have a cup of coffee in the house on your own, and thought it would be nice to talk to somebody?
Well you can and very easily too. Come along to Meeting point on a Wednesday and have that cup of coffee with like-minded company



**in the Poppy Room at the
Bottisham Community Sports
and Social Club**

A place where you can meet old friends
make new friends, relax, chat and enjoy
coffee, cake and biscuits in a friendly
relaxed atmosphere.

**EVERYONE WELCOME
ADMISSION FREE**

PREMIER INVESTMENT MANAGEMENT SERVICES LTD

INDEPENDENT INVESTMENT ADVISERS Authorised &
Regulated by the Financial Conducts Authority

Specialist in Isa's & Isa Transfer's
Investment Planning & Portfolio Management

To arrange a free consultation ring **01223-882422** or email
pims@globalnet.co.uk or visit **www.pims-uk.com**



**BOTTISHAM
SCHOOL OF MOTORING**

Tel: 811556

*All qualified instructors
with extremely high
1st time pass rates*

Neighbourhood Watch

Neighbourhood Watch has suffered with a poor image in the recent past, with members dubbed curtain-twitchers or nosy neighbours. More recently it has become regarded as beneficial to a neighbourhood, helping to reduce crime and helping to create a community spirit amongst neighbours.



For a neighbourhood watch scheme to exist, it needs a coordinator, the person that acts as a leader and administrator and it needs to be registered. The coordinator then sets up a means of communicating with their neighbours, either by email, Facebook or WhatsApp. The aim is to inform the members of crimes and potential crimes and encourage them to take appropriate safety measures. This includes passing on advise on how to reduce their risk of being defrauded by the many types of scams that are now current.

Neighbourhood policing teams have been greatly reduced, and bobbies on beats are now a thing of the past. The police are looking to Neighbourhood Watch members to be their eyes and ears and report suspicious activities. They also look on the members to keep their neighbours informed of risks and pass on advice about safety and security.

Although East Cambridgeshire has low crime figures when compared nationally and continues to be a safe place to live and work, nevertheless, homeowners need to ensure that their homes and vehicles are safe and secure. Most burglars are 'opportunists' and break into homes that are easy targets and thus good security and basic precautions reduce the chance of your home being targeted.

Neighbourhood Watch is not just there to reduce crime but to build local communities and encourage people to be more neighbourly. When Neighbourhood Watch started over 40 Years ago it was not necessary to ask people to chat to their neighbours, most were chatting away over the garden fence. This is no longer part of modern life, people are more isolated in their own homes, often not knowing the names of those that live two or three houses along the street from them. We want people to feel at home in their community, and have neighbours they can call on if they feel the need.

If your part of Bottisham is not covered by neighbourhood watch and you wish to be part of this endeavour, please contact the secretary, Kevin Evans at ecnhwa@hotmail.com or on 01353 614892.

Please note that due to holidays, the copy deadline for a combined JULY/ AUGUST magazine is the 12th June.

Please send material to the editor at BottishamCresset@gmail.com

Have you thought of advertising your business in **The Cresset?**
Email the Editor for details: [**BottishamCresset@gmail.com**](mailto:BottishamCresset@gmail.com)

ANGLIA TREE CARE

LARGE ENOUGH TO COPE • SMALL ENOUGH TO CARE

80% OF OUR WORK IS VIA RECOMMENDATIONS
TREE SURGERY & FELLING • HEDGE MAINTENANCE
STUMP GRINDING • FULLY QUALIFIED
FULLY INSURED • 24/7 SERVICE
All work carried out to BS 3998

Free Estimates Given within 7 days

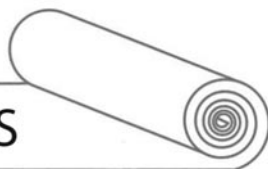


Tel. 01223 424454 • INFO@ANGLIATREECARE.CO.UK

M E M B E R
Guild of Master Craftsmen

PETER FISHER

CARPETS - WOODS - VINYL



A wide range of floorings supplied and fitted.
Please call for a free estimate and select in your home.

Tel: (Bottisham) **01223 811321**
Mobile: **07879 494 685**

Great service for
30 years

M&P

LANDSCAPE AND DESIGN

Patios, Block Paving, Fencing,
Turving and all Gardening needs.

References available on request.

Local tradesman • Free estimates

PLEASE CALL

01223 811144

MOB **07837 358550**

N & G Marsh of Burwell

Specialising in bespoke metalwork
and engineering

- ❖ Welding services
- ❖ Handrails
- ❖ Gates
- ❖ Metal railings
- ❖ Tow Bars
- ❖ Mower repairs
- ❖ RSJs supplies

Services to Building
and Agricultural Industries

Brian Marsh Engineer

Tel. 01638 741354 Mob. 07519 493664

Email: Brian@n-g-marsh.co.uk

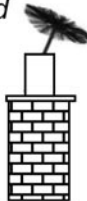
Website: www.n-g-marsh.co.uk

Unit 12, Meadow Ind. Estate
Reach Rd., Burwell, CB25 0GH

R. BRISTLEY Est. 1974
9 Collings. Place Newmarket CB8 0EX

BRUSH ELECTRIC SWEEP

- All Chimneys swept
- Solid Fuel, Oil and Gas
- Cows, Nets and Pots fitted
- Carpets Cleaned
- Stoves Serviced
- Competitive Prices
- Very Clean
- Public Liability Insurance



also Classic Wedding Car Hire
White Citroen DS21

Tel: 01638 662439
www.rbristley.co.uk

BED AND BREAKFAST THE MEADOW HOUSE

2A High Street, Burwell,
Cambridge. CB25 0HB



- En-suite rooms with colour TV.
 - Large car park and grounds.
 - Family rooms, children welcome.
 - English Tourist Board 4 Diamonds.
- Self catering cottage also available
at Swaffham Prior.*

Brian & Hilary Marsh
Tel: 01638 741926 Mobile: 07519 493664
Fax: 01638 741861
Email: Bookings@themeadowhouse.co.uk
Website: www.themeadowhouse.co.uk

SG LAW

Plumbing & Heating Services

Cambridge based plumbing,
heating and specialists in
bathroom installations

Services include

- Plumbing
- Heating & Servicing
- Bathrooms
- Commercial

T: 01223 812280 M: 07747552232 E: hello@sglawplumbing.co.uk www.sglawplumbing.co.uk

Saffron Salt Supplies

Water Softener Salt

Salt tablets in 25 or 10kg bags

Block salt in 2x4kg packs

Dishwasher Salt

Granules in 10kg bags

De-icing Salt

White crystal in 25kg bags

delivery **FREE** to your door
visit our website for full listing

www.saffronsalt.co.uk

Place your order by phone

07980 581815 or email

info@saffronsalt.co.uk



N.C.S.

**BRUSH ELECTRIC SWEEP
ALL CHIMNEYS SWEPT**

- BIRDS NESTS REMOVED
- OIL & GAS BOILERS
- SOLID FUEL, STOVES FITTED
- SMOKE PRESSURE TESTING
- INSECT MESH, POTS, COWLS
- FLUE LINERS SUPPLIED & FITTED
- BIRD GUARDS & TERMINAL FITTED
- GUTTERS CLEANED & REPAIRED
- GENERAL PLUMBING WORK

**FOR FREE QUOTE CALL
07824 727277 or 01638 662760**

EMAIL
NCS.NEWMARKET@YAHOO.CO.UK

WEBSITE
www.ncsnewmarket.co.uk

*Send text or e-mail for 10% discount
Answers within an hour. • Waiting time approx. 1-2 weeks

**VERY CLEAN • Public liability insurance
- Competitive rates -**

Bottisham Community Sports and Social Club.



OPENING HOURS

Weekdays – 5pm to 11pm
Saturday - 12 noon to 11pm
Sunday - 12 noon to 9pm

Ad hoc bar work available, please contact
the club for more details.

Come along and enjoy!
Darts/Pool/Snooker/Billiards/Table Tennis.
**Plus, do not forget we have
BT Sport.**

HALL HIRE
Do you need a venue for a party
or a meeting in our newly refurb-
ished Poppy Room?
Contact the club for
details of our facilities for hire.

What's on

Saturday 3rd June - Pam

Music from Pam, come and join an evening of song and dance.

Saturday 8th July

An evening with a Roy Orbison tribute artist including a Ploughmans.

Saturday 5th August - Karaoke with AJ's disco
Choose your favourite song and entertain us.

Saturday 19th August - Bowling Club Fundraiser
Cheese & Wine Event

Saturday 9th September - The Legionnaires 77
A night of great sounds from a great band.

Saturday 16th September - Charlie Brown
The soul man himself is with us again an evening of soul and Motown.

Saturday 21st October - Bowls Club Fundraiser
Time to test your knowledge with a Quiz Night

Saturday 28th October - Family Disco with AJ
A Halloween special for families, dress up as your favourite character.

Saturday 2nd December - Christmas Party
Family Christmas Party an afternoon of fun and laughter

Please refer to the website, www.bottishamsocialclub.co.uk for the latest information. If you wish to be kept up to date with the latest news, please email bottishamsasc@gmail.com with your email. 31 Downing Close, Bottisham, Cambridge CB25 9DD Tel. 01223 812063

MARTIN BALL
♦♦♦
FIREWOOD & TIMBER

www.martinballfirewood.co.uk

sales@martinballfirewood.co.uk

Office • 01799 586 513
Woodyard • 01371 830 503
Mobile • 07980 258 003

Blunts Farm Yard
Thaxted
CM6 3PX



LM

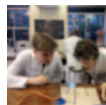
GROUNDWORKS & LANDSCAPING

- Patios • Paving • Footings
- Drainage • Fencing & More

Tel: 01638 743627 Mobile: 07934 642716



**LANDMARK
INTERNATIONAL
SCHOOL**



A small international school in Fulbourn, South of Cambridge,
welcoming pupils aged from 4 to 16 years.

We have experienced and enthusiastic teachers delivering a broad and engaging curriculum to small classes of pupils from Britain and beyond. We offer excellent pastoral care and are non-selective academically. Transport via school minibuses from central Cambridge and surrounding villages.

To arrange a visit, please call:

Mary Greer on 01223 755100/07400 584015

or email mary.greer@landmarkinternationalschool.co.uk

www.landmarkinternationalschool.co.uk

Landmark International School is a registered charity.

News from Bottisham Medical Practice Patients' Participation Group

Volunteer Car Service: We are still looking for drivers for this Service. We have had little response to our previous advertisements.

Outpatient Appointments: Unfortunately, there is a delay in hospital outpatient appointments with long waiting lists.

Paramedic: The Practice paramedic is seeing housebound patients early in the day to try and avoid long ambulance waits and delays at A & E, when this is necessary, as the GPs are busy in clinic in the mornings.

The Patient Participation Group: We are happy to have new members to join the committee, all patients of this Practice are eligible. Please contact our chairman as below to find out more information and how you can be involved.

Regular Meetings: Next meeting is Wednesday July 26th 2023 at 1.30pm. If you wish to join our Zoom meeting, please email our chairman at s.j.gilson@btinternet.com who will send you a meeting invite.

FOR SALE £100 ONO

Classic Peugeot Road Cycle, Reynolds 501 double butted 26" frame, for 6'plus.VGC.
Very High spec. Shimano Dynohub, Buch & Muller Standlights, Mafac Racer centre pull brakes, Stronglight chainset, 21 speed, Shimano Sora Flight Deck STI Levers,
Mavic OPENsport rims, Gatorskin tyres. Brooks saddle.

email the editor; bottishamcresset@gmail.com



OvenPad Cleaning Services

I will professionally & efficiently clean ovens, ranges, Agas, ceramic hobs, extractors, microwaves and BBQs.

It's a dirty job, why not give me a call?

Contact **Paddy Kelly** on

Tel: 01638 742703

Mob: 07752 631343

Email: info@ovenpad.com

Website: www.ovenpad.com

ANDREW EVANS

01954 780 999 – 01223 864335

email: andrew@omegaclean.co.uk

www.omegaclean.co.uk

- ✓ Carpet Cleaning
- ✓ Upholstery Cleaning
- ✓ Tile & Grout Cleaning
- ✓ Leather Cleaning
- ✓ Oriental Rug Cleaning
- ✓ Carpet & Fabric Protection
- ✓ Allergy Relief Treatment
- ✓ Odour Eradication
- ✓ Stain Removal
- ✓ Carpet Fitting

Family Business Since 1980



PEST PROBLEM?

CALL DRE PEST CONTROL

01954 230708

07789 502556

- Commercial & Residential
- One - off Call Outs
- Management Contracts

Cambridge & surrounding areas
www.drepestcontrol.co.uk



New Phone App to Help Addenbrooke's and Rosie Patients Navigate Hospital

Patients have led the way in a project to make it easier to find your way around Addenbrooke's and the Rosie hospitals.

The new CUH Directions app was developed by patients for patients and was the idea of hospital volunteer Mike, a member of the hospital's Outpatient Experience Group, who led on the project with hospital staff.

The app maps out your route from your start to end point in a series of images and words, showing you the shortest route through the hospitals.

Visit the App Store or Google Play Store and download to your mobile device.

Find out more at: www.cuh.nhs.uk/news/new-cuh-directions-phone-app-helps-patients-find-the-way/

Bottisham Adult Learning Association (BALA)

**Wednesday 15th June 7.30pm
at Bottisham Sports and Social Club**

“A FENLAND HISTORY SAVER SHARES ALL”

Presented by Mike Petty

Mike Petty has been helping people discover Cambridgeshire history for 50 years, sharing thousands of photographs and newspaper documents on all areas of the county.

The evening including wine and nibbles is free to members.

There will be a charge of £10 for non- members. This would include £5 membership fee if joining on the evening.

For more details email bottishambala@btinternet.com

Please note that due to holidays, the copy deadline for a combined JULY/ AUGUST magazine is the 12th June.

Please send material to the editor at BottishamCresset@gmail.com

Have you thought of advertising your business in *The Cresset?*
Email the Editor for details: BottishamCresset@gmail.com



LOCKSWIFT CAMBRIDGE SERVICES 24/7

Security expert's local to you 24/7

Emergency Callout
07989 954682



PROFESSIONAL SECURITY SERVICES



LOST OR BROKEN KEYS



LOCK REPLACEMENTS



GAINING ENTRY



LOCK CHANGES

SUMMIT



LANDSCAPES

PAVING - DRIVEWAYS - BRICKWORK
CARPENTRY - GROUNDWORKS



www.landscapingpaving.co.uk

PHONE: 01223-929394

On Sunday 30th April I was looking after visitors in the RAF room when an elderly gentleman in a wheelchair arrived with his family and started reading one of the information boards.

When the gentleman saw the sentence about the laying of the metal planking to improve the runway in 1941, he remarked "I was here in 1941 laying that". His daughter explained that her father had served in the Royal Engineers and was part of a team that was stationed at Quy and marched to Bottisham Airfield each day to lay the temporary metal planking. He went on to serve in Africa, where he also installed the metal planking for Airfields! His name is Norman and he is 102 years old, but still bright as a button. He lives in Comberton and often goes to Cambridge on the bus.



After having his photo taken beside the pile of recovered metal planking which he helped to lay, I shook his hand and wished him well. It was such an honour to meet someone who had worked on the airfield - he must be one of the few that are left, and I won't ever forget the day I met him.

On the 1st and 2nd of July is our 'Bottisham at War' 1940s weekend with battle re-enactments, weapons demo's, wartime singers, military vehicles and trade stalls, including food and drink. This is the largest event at our museum and is always well attended, with so much to enjoy over the course of the two days. Note that for the re-enactments there will be some loud noise associated with blank firing and pyrotechnics.

Times are 10.30am till 4pm both days.

Admission; Adults £12/Weekend £18, Child/concessions £7, Family 2 adults 2 child/concessions £28.

Advance booking is available - for more details please visit our website;
www.bottishamairfieldmuseum.org.uk

Charles Cook, Museum Volunteer



Hello neighbour

Bottisham's Co-op is open



Find us here:

12 High Street, Bottisham,
Cambridge CB25 9DA

Open 6.30am - 10pm, daily



It's what we do

Public Transport Matters

The observant among you will have realised that the westbound High Street bus stop in Bottisham has now moved back to opposite 179 High Street (where it always was before) from the position several yards nearer the road junction where it had been erroneously placed by contractors last summer. The reinstated position of the bus stop is much safer for vehicles turning into the High Street from Newmarket Road. Thanks to a local resident for arranging and funding this.

I thought that this month I'd also cover the subject of buying Train Tickets over the web. There's been a big change in buying train tickets in the last few years, and it's usually now often cheaper to buy them in advance rather than 'over the counter' at the station. In many cases it can also be cheaper to buy two singles rather than a return!

I suggest using nationalrail.co.uk to buy tickets. While I should say that I believe it's a rather badly designed and unattractive website, the plus side is that it doesn't charge any fees for its service. To use it you first select the journey you want (where from and to, what day you want to travel, and at what time - remembering to specify arrival time or departure time). Then, when you've chosen those, nationalrail.co.uk finds the cheapest fare and times for your journey - and there can be some very good deals available on specific trains at specific times. When you have chosen the train times you want, nationalrail.co.uk then diverts you off to a Train Operator's sales website to buy the ticket.

Means of delivery of the ticket you've bought can vary according to which Train Operator sales website you've bought it from. Some, such as Greater Anglia, may promote their own official App (accessed via a mobile device) on which to receive the ticket.

Some sales websites will attach the ticket to an e-mail as a document with a QR code which you can then scan (from your mobile phone) at the QR code reader at the station ticket barrier. Alternatively, you can print the ticket out yourself if you have access to a printer at home, and then scan that paper ticket's QR code at the ticket barrier.

In addition, some sales websites may suggest that you obtain the ticket at a ticket machine at the departure station or (as is often possible) any station you specify. After you've selected this option, you obtain the ticket by first inserting into the machine the payment card you've used to pay for the ticket, and then typing in a special code on the ticket machine's touchscreen. This (usually) results in you receiving a traditional orange card Train ticket.

A final option offered is to have the train tickets posted to you. But a fee is nearly always charged for this.

One feature in buying a Train ticket that can be overlooked is the use of Railcards. Buying a Railcard, which is available for certain specific types of travellers, usually gives 1/3 off the price of the Train ticket (except for journeys at some 'peak' times). Disabled Persons Railcards are available to more people than you might think. Did you know, for instance, that if you have a hearing impairment and consequently have hearing aids prescribed - either by the NHS or privately - that you are entitled to purchase a Disabled Persons Railcard? Disabled Persons Railcards also have an added bonus in that the holder

continued on page 31

Switch to Solar with Confidence

Take control of your energy costs and reduce your carbon footprint with solar energy.



Our expert team guarantees:

- ✓ Specialist roofing skills and building compliance expertise
- ✓ Premium, market-leading products for maximum energy efficiency
- ✓ A 25-year long panel warranty to protect your investment
- ✓ Honest energy calculators to ensure transparency and accuracy
- ✓ Clear and effective communication throughout the process

Switch to solar with confidence and contact us today to schedule your service.



18 Pembroke Avenue, Northbrook, Cambridge, CB25 9JP
Registered in England and Wales, Company No. 09235628 VAT Reg No. 200035782

CALL US NOW 01223-782416

info@roofing-cambridge.co.uk
www.roofing-cambridge.co.uk

Stitchshed Sewing

(Formerly Little Stitches)

Repairs and Alterations

I am based locally and can help you with clothing alterations & repairs, curtains, blinds and cushions

Sewing Classes

If you wish to learn to sew, then please call for a chat.

Classes at the Stitchshed or private home tuition available for:

Dressmaking
Patchwork and Quilting
General craft sewing

Getting to know your sewing machine!

Tel: 01638 745160
Mobile: 07449 954590
Email: stitchshed@gmail.com
Web: www.stitchshed.blogspot.com

little legs
MONTESSORI



Fassage Hall, Lode

A calm, child led environment where children learn through meaningful play.



- Montessori Preschool For children aged 2-4 years
- All types of government funding accepted
- Experienced, highly qualified staff.
- Using the Montessori method of education
- Weekly Forest School sessions

GET IN TOUCH:

07572 121463

littlelegsmontessori@gmail.com
littlelegsoflode.com

OPENING TIMES

Monday and Wednesday
9am-3pm
Tuesday, Thursday, Friday
9am-12.30pm



is entitled to have a companion that travels with them receive the same 1/3 discount, even though the companion may not have a Railcard themselves. More details on Railcards are at railcard.co.uk.

Happy travelling!

National Traveline Enquiries (bus services) www.traveline.info or 08712 002233 (a Premium-rate service)

National Rail Enquiries - www.nationalrail.co.uk or 03457 48 49 50

John Austin

News from Wicken Fen Nature Reserve

The Summer Nature Trail is the longest route around the Sedge Fen. It has been given time to rest to allow the delicate peat soils to recover and will open on 1st June. It's a special part of the reserve, full of lush green foliage and fen plants and flowers. This circular route is approximately 2¼ miles long and is a beautiful place to look out for marsh orchids, dragonflies and butterflies.

Boat trips and cycle hire are in full swing and are great ways to explore the reserve with friends and family. If you'd like more information about what we offer, our Visitor Centre team can always help; we're available from 10am to 5pm daily on 01353 720274.

FAIRS, FEASTS AND FESTIVALS

Our programme of local fairs for June and July includes Waterbeach Feast on 10 June, Gs Open Farm on 11 June, and Burwell Carnival on 1st July! We look forward to meeting our local communities at these celebrations. Come and find us to say hello – we'd love to see you.

BIOBLITZ SATURDAY 8 JULY

We're excited to hold our first BioBlitz at White Fen and the Norman Moore Pond in the wider reserve. If you haven't been to a BioBlitz before, the idea is to find as many different species in a specific location on a specific date. This gives us a snapshot of the nature there that can be used by the team at Wicken Fen, and local and national databases that monitor wildlife. You don't need to be an expert to come along and help us, we'll have spotter sheets and guided walks with experts to help you identify what you find. Save the date and keep an eye on our website and social media channels for more information. Local groups and organisations wanting to come along and get involved can contact Julia Hammond at julia.hammond@nationaltrust.org.uk

Keep an eye on our social media for opportunities to get closer to nature and find out more about the wildlife at the Fen. Local partners including the British Dragonfly Society and local moth recorders will be offering pop-up activities throughout the summer.

For the latest reserve information, please visit our website
www.nationaltrust.org.uk/wicken-fen

Details of our events can be found on our website at
<https://www.nationaltrust.org.uk/wicken-fen-nature-reserve/whats-on>




HILTON PARK
BARCHESTER HEALTHCARE

Care as unique as you are

Imagine a little peace of mind...

...with the reassurance that your loved one is surrounded by caring people who value them for the unique person that they are.

Where they're supported to continue their comforting routines, enjoy their favourite food, and spend time doing the hobbies and interests that they love most.

You can expect all this and more for your loved one at Hilton Park.

Call **01223633900** to find out how we can help you.

Bottisham, Cambridge, CB259BX
barchester.com/HiltonPark

Nursing care • Residential care • Respite care and short breaks



Bottisham Handbells

If you like music you may be interested to know Bottisham Handbells are looking for new members.

We are a small friendly group that enjoy playing a range of music.

We meet every Wednesday evening in Bottisham for practice.

If interested why not give it a try?

No experience needed.

For further information contact:

Ian Cole on 01223 812573

The Lake District - Eden vale



HOLIDAY COTTAGE

Nr. Penrith Cumbria CA10 1QW

AVAILABLE ALL YEAR ROUND

Immaculate and well-equipped modern holiday house, sleeps six, full central heating, double glazing and double garage.

Our holiday home offers every comfort, a real 'home from home' at reasonable rates, in a lovely village location with panoramic views.

T: 01638 741926 or 741354

M: 07519 493664

for details

All weeks £325.00

Bottisham and District Gardening Club

April was a month for outings. Several of our members enjoyed an excellent lunch at the Newmarket Golf Club and had an opportunity to chat about all things horticultural and otherwise among themselves.

Despite the chilly Spring weather our evening outing to Darwin Nurseries was also well attended. Staff and co-workers showed us round their extensive grounds which cover seven acres and where they grow a variety of fruit trees, many of which you won't find in the supermarket. Looking after the animals is always a favourite job for the co-workers and we were allowed to feed some of them. The goats were very lively and Dave, the 10 week old pig, was definitely the star of the show. We were given a demonstration of seed sowing and pricking out and allowed to have a go ourselves. We ended the evening with coffee and a browse in the well-stocked shop where everyone managed to find something to buy.

We have an outing to Helmingham Hall in June which is open to members and non-members. See the poster for contact details if you would like to go.

Margret Coles

BOTTISHAM & DISTRICT GARDENING CLUB



Summer Outing to HELMINGHAM HALL GARDENS

With morning coffee stop at Stonham Barns

Wednesday 21st June 2023

Travel by executive coach with on-board toilet
Departs from Bottisham Village College at 9.15 a.m.
with pick-up in Lode at 9.20 a.m.

Leaving Helmingham Hall at 4.30 p.m.

Members £25.00 per person - Non-members £27.00 per person
Cost inclusive of coach and entrance fee

To book, please send the appropriate payment to Julia Green,
145 High Street, Bottisham, Cambridge CB25 9BB (01223 811467)
or bring to the next meeting.

Cheques payable to Bottisham & District Gardening Club.



Are You Paying Too Much For Your Medical Insurance?

Independent And FREE Advice

- **Switch to an alternative scheme** – If you are currently insured, switching to a competitor can mean *substantially lower rates*
- **Pre-existing conditions covered** – It is often possible to include pre-existing medical conditions currently covered by your existing provider
- **Improve your coverage** – We can frequently improve your cover whilst also lowering the cost of your premium
- **Complexities of different schemes** – In many cases, people are over insured – we can ensure you are covered with a scheme that meets your individual needs and requirements
- **Full cover for cancer treatment** – Many policies do not cover cancer in full – we are able to advise on your current level of coverage



For further information, please call Simon Lively at
M&L Healthcare Solutions -

FREEPHONE 0800 145 5838 or 07710 993990

Email: simon.lively@mlhs.co.uk

quoting ref: The Cresset

M&L Healthcare Solutions Ltd is authorised and regulated by the Financial Conduct Authority. (FCA Reference number 943748)



Bottisham Bowling Club

33 Downing Close
Bottisham
CB25 9DD

Email; bottishambowlingclub@gmail.com. Web; bottishambowlingclub.co.uk



With the hint of spring in the air the long, and very wet, closed season has ended, our green is once more open for play.

This year The Club is focussed on introducing more local people to the fine sport of Lawn Bowls.

Whether you have tried your hand previously or are simply curious to try a game or two for the first time why not contact us using the email address at the head of this page? An informal and friendly “roll-up” is simple

to arrange if you wanted to have a try! All you need is a pair old flat soled shoes, we will supply everything else you need for a trial session!

There is a wealth of information regarding bowling in Bottisham on our website, the details of which can also be found at the head of this page. Come and browse around! There are also contact links on the website for any enquiry you may have.

As an introduction to Bowls if you are hesitant to make that first step towards playing, why not come down to our peaceful club and watch a game or two?

We welcome spectators at the club so why not come down and support your village team? League matches are played on Monday and Friday afternoons and evening matches are played on Thursdays. The fixtures list can also be found on our website so you can check if we have a home or an away match.

FRIENDLY COUNTY BOWLS MATCH

Whilst on the subject of spectating, if you want to see Lawn bowls at a county level, we are hosting a friendly match between Cambridgeshire and Bedfordshire on Tuesday 11th July at 2pm. This match promises to be fiercely competed and one not to miss! Come down and enjoy an afternoon of fine sport!

Bottisham Bowling Club.

S. NEAL
Carpentry and Small Works

Offering a high quality carpentry and small works service in Bottisham and the surrounding area.

FLOORING • HANGING NEW DOORS
KITCHEN RENOVATIONS • DECORATING •
TILING • LANDSCAPING
BESPOKE CARPENTRY



07703 043243

SNealCarpentry@Gmail.com
@S.Nealcarpentry



My love for dogs
An alternative to Kennels

A personal, caring approach to dog care.

In our home, your dog will receive two hour-long walks every day as well as treats, socialisation with other dogs and the administration of any required treatments.

- Fully insured and police checked
- Licensed by Sth. Cambs. District Council.

For further details call Amanda on
07903 806750

Based In Steeple Morden near Royston.



ONG

“Successful entrepreneurs are givers and not takers of positive energy.” ANONYMOUS



codge.com
info@codge.com
01449 675 548

Design & Origination • Website Design & Maintenance • Email Marketing • Digital Publishing
• Logo Creation • Cartoons & Illustrations • Theatrical, Product Photography & Retouching •
Business Stationery • Promotional Flyers & Posters • Newsletters & Magazines • Programs &
Catalogues • Books & Brochures • Calendars • Reports • Signage, Displays & Banners •
Personal & Wedding Stationery • Mac Training



With the Coronation of HRH King Charles III quickly approaching, the topic for our April meeting was the Coronation and special occasion memorabilia in general. Julie Sale began with special prayers for King Charles III and the Royal Family. Members were given printout copies of the King Charles III Coronation 2023 emblem, Coronation Spoon, Invitation to the Coronation on 6th May and Invitation given to Charles on the Coronation of his mother Queen Elizabeth II. Julie shared information she had researched on these items. The emblem is created with the flora of the four nations of the United Kingdom:

the rose for England, the thistle for Scotland, the daffodil for Wales and the shamrock for Northern Ireland. These natural forms combine to describe St Edward's Crown, used for the Coronation of British monarchs. This was designed by Sir Jony Ive KBE and his creative collective, LoveFrom. The Coronation Spoon dates back to 1349. It is used for anointing the sovereign with holy oil, the most sacred part of the coronation ceremony. The Coronation Spoon survived Parliament's destruction of the Crown Jewels in 1649 because it was bought by a man called Clement Kynnersley.

The invitation to the Coronation of Their Majesties King Charles III and Queen Camilla was designed by Andrew Jamieson, a heraldic artist and manuscript illuminator, and features the couple's coats of arms and a motif of the Green Man against a background of the emblematic flowers of the UK and a British wildflower meadow and wildlife. We then compared the similarities between this and the invitation Charles received for the Coronation of his mother Queen Elizabeth II. They are very similar in that they both feature greenery, flowers, lion and unicorn, while cartoon like guard bandmen were featured on the latter for young Prince Charles.

Members had been asked to bring along any commemorative items they owned from past events, and we all enjoyed viewing and sharing the history of these. They included spoons, medal, book, photograph, thimble, and miniature model of golden coach and horses all commemorating Coronation of Queen Elizabeth II, Spoons, pastry forks, biscuit tins commemorating the Coronation of King George VI in 1937. Other memorabilia commemorated Queen Victoria, Winston Churchill and Lord Nelson.

Instead of our usual meeting, on 15th June we will be having an outing to Ely Cathedral to view the 'Threads Through Creation' Exhibition. The exhibition is on until 26th July. For more information visit <https://www.elycathedral.org/events/threads-through-creation-exhibition>

Ann Langran



Please note that due to holidays, the copy deadline for a combined JULY/ AUGUST magazine is the 12th June.

Please send material to the editor at BottishamCresset@gmail.com

Tutor



Experienced tutor:
Fully qualified former primary school
teacher and home educator based in
Little Wilbraham

Expertise in:
Primary
Key Stage 3: Maths, English,
History & Geography
Study skills & revision techniques

For information and to arrange a free
meeting/consultation contact:

Anne-Marie McCubbin BA(Hons) PGCE
email: info@wingstoflyeducation.co.uk
tel: 01223 811939

SHANE MAUREL HANDYMAN SERVICES

ALL TYPES OF DOMESTIC WORK
UNDERTAKEN

From:

**Plumbing,
Carpentry
Gardening
Electrical
Tiling**

to

Moving Furniture

**I WILL DO THE
LOT!**



Tel: 07518 644537

Email: shapiemau@gmail.com

STEPWISE FOOTCARE

Vivien Honeyborne-Martins

MA(Cantab) BSc(Hons) MChS HPC Registered



Clinic-based Chiropody/Podiatry

- *Chiropody*
- *Biomechanical assessment*
- *Insoles/SIDAs bespoke orthotic therapy*
- *Children's foot problems*
- **MotionMetrix** gait analysis
- **Lunula Laser™** fungal nail treatment
- **Swift Microwave** for verrucas

The Burwellness Centre

10 Ness Road, Burwell, Cambridge, CB25 0AA
Tel: **01638 741973** stepwise-footcare.co.uk

The Upholstery Barn



- Fulbourn-based upholsterer offering traditional and modern reupholstery, repairs and re-covers
- Bespoke footstools & soft furnishings

Contact:

Anne McGarvey
T: 07986027807

E: camupholsterybarn@outlook.com
www.theupholsterybarn.co.uk

Last month, we looked at how birds manage to sing continuously and breathe at the same time, none more effectively than the Skylark which, by now, should be adorning the skies everywhere in full voice. They are still abundant, of course, but the Skylark population has suffered more than most over the past 60 years from the disappearance of rural margins due to increasingly intensive farming.



It's a familiar story, I'm afraid, with a 75% reduction in numbers in the 25-year period from 1972, and a halving of the total UK population during the 1990s. So what has been going on? Well, the bottom line is that all birds need three basic amenities: safe place to nest; food in spring and summer for their growing chicks; and food and shelter over the winter. Skylarks like to nest in grass that's long, but not too long! So, as farmers switched from Spring-sown to Autumn-sown cereals, fewer Skylarks found the resulting tall crops suitable for nesting, and the absence of stubbles, together with the increased use of pesticides, meant a scarcity of winter food supplies. Furthermore, grassland sites are also becoming less hospitable to skylarks due to both intensive grazing of animals and an increasing tendency to feed them on silage, rather than hay, resulting in frequent mowing and, therefore, shorter grass.

Please don't think I have any kind of grudge against farmers, though! The demand for more intensive and cost-efficient farming is driven, as always, by the consumer – i.e. you and me! It makes perfect, cost-effective sense for farmers to maximise their acreage and for livestock to be fed on silage, which is more easily digestible than hay, giving much more nutritional value. So – what do we do? There is Hope, in more ways than one...!

If you zoom in on the RSPB's Hope Farm, Knapwell on Google maps, you will see a field of crops containing a number of bare patches. These are what they call 'Skylark Plots': small areas left unsown in Autumn to offer the birds a safe space in which to build nests. Additionally, the fields are left with grass and wildflower margins to support food availability. The RSPB purchased this 180-hectare site in 2000 and use it to research and experiment with various wildlife-friendly farming methods, whilst turning a profit at the same time. Obviously, the RSPB is a charity, but Hope Farm is run as a commercial enterprise and they helpfully publish financial information as well as details of methodologies and results on their website www.rspb.org.uk.

And it doesn't stop there. The Countryside Stewardship Scheme is available to any farmers, woodland owners, foresters and land managers with eligible land. The wide scope

(Continued on page 41)

SECURE CONTAINER STORAGE

10ft and 20ft

IDEAL FOR BUSINESS OR PRIVATE STORAGE.
CONVENIENTLY LOCATED IN BOTTISHAM

Call 07841 930065



Rothwell's
Carpet Cleaning

01638 428 060

01223 832 928

www.Rothwells.biz

Carpet Cleaning

Stone Floor, Upholstery & Rug Cleaning.

A few points that make us stand out from the others,

Rothwell's has been in business since 1993.

We're an honest local family firm.

Our large truck mounted machines mean more cleaning
& drying power for the best results possible.

Members of both the NCCA and TACCA.

We will move the furniture for a thorough clean.

100% satisfaction or it's FREE.

Call Oliver and Max Campbell for expert help today.

Rothwell's, Malting End, Kirtling, Newmarket, CB8 9HH

(Continued from page 39)

of this multi-tiered scheme covers flood risk management and water pollution as well as the maintenance and regeneration of wildlife habitats (which is the main focus of the Entry Level). The applicants can seek grants for provision of nectar and pollen, winter food for birds, habitat improvements, hedgerow & boundary development, and even woodland creation and management. The CSS is due to be replaced by the Environmental Land Management Scheme in 2024 under the new agricultural policy. One sincerely hopes that farmers continue to be effectively incentivised to reverse the post-war destruction of our beautiful wildlife.

Which brings me back to the Skylark, *Alauda Arvensis*. You shouldn't have too much trouble identifying the Skylark, even when it is on the ground or in level flight. It has a striated brown plumage with lighter underparts and shows white on its outer tail and rear edges of the pointed wings. In size, it is between a Finch and a Starling and possesses a (usually) noticeable crest, which it raises when excited or alarmed. Its movement is typically a walk or a run on the ground and it will perch on raised objects but hardly ever in trees (for some unknown reason). Food wise, the Skylark is fairly omnivorous, consuming mainly insects and weed seeds, plus young shoots and leaves, worms, caterpillars, beetles and spiders among the undergrowth.

Could it be confused with any other species? Well, its only close relative in the UK is the Woodlark, a slightly smaller, stockier, flatter-headed bird of coastal or breckland heaths, and it has a completely different (and shorter) song flight, and it is pretty rare. So, I doubt Woodlark is on the Bottisham 'list'! The one bird to be careful of is the Meadow Pipit, another UK resident of farmland, grassland and moorland; but the Pipit is smaller, darker and somewhat busier on the ground than the Skylark, has no crest and, of course, has no sustained song flight.

The Skylark does not always deliver his song from the air... you will occasionally find one singing from an ear of corn, for instance, but, given that the dual purpose of the song is to establish territory and to attract a female, it is usually best to look upwards when you hear the melody. Sometimes the Skylark is little more than a dot in the distance but, stick with it and you'll catch him on the descent within around five minutes. He will invariably cease abruptly upon landing but, if you miss out, there's bound to be another one along shortly. Enjoying this wonderful spectacle, you'll be in good company... William Wordsworth wrote of the "Ethereal minstrel! pilgrim of the sky!" but, in my opinion, no-one has captured the magic of the Skylark as beautifully as Shelley...

TTFN - Gerry Daish

Hail to thee, blithe Spirit!
Bird thou never wert,
That from Heaven, or near it,
Pourest thy full heart
In profuse strains of unpremeditated art.

To a Skylark - Percy Bysshe Shelley (1820)

Bottisham Vehicle Services Ltd.

Reliable, Friendly, Professional

Service and repairs to all makes,

MOT testing, tyres, air conditioning

Courtesy car available

Local collection and delivery

10 Tunbridge Lane, Bottisham, Cambridge CB25 9DU

01223 811919 • simon@bvsltd.net • www.bvsltd.net

0% FINANCE AVAILABLE

How will your fence look after another UK Winter?

Install a ColourFence before the Spring and you'll be maintenance-free until 2048!

PREVENTION IS ALWAYS BETTER THAN CURE.

The moment a fence falls or breaks, you have to deal with third party damage, security and privacy issues, neighbours, quotes, the expense and inconvenience - all at once. Alternatively, a simple call to ColourFence can head off all your problems for the next 25 years! Virtually maintenance-free, before the Spring growing season starts, now is the best time to see our great value, colours & designs. Free phone today.

The product is just what we were looking for and wish we had discovered it years ago. No more annual painting or waking up to fallen panels! We are very pleased with our new fence.

Mr & Mrs Green, Sandy

Guaranteed* not to warp, crack, shrink, rot or peel

Withstands wind gusts of up to 130mph

Saves maintenance, time and money - no annual treatment required

Guaranteed to look good for up to 25 years*

Unbeatable value compared to other fences

Create your look with a choice of designs and sizes in four colours

No risk professional installation

0% Finance Available








For a free, no-obligation quote, find out more via:

01223 811 160

colourfencecambs.co.uk

 **5 YEAR GUARANTEE**

Touse our wide choice of sizes, colours and designs - contact us today!

*Hose down several times a year. Terms & conditions apply. iFreed Fencing Ltd is a manufacturer appointed representative of iDeal Sales Solutions Ltd (a specialist finance, local sales solutions & a credit broker and not a lender) (FRN: 844209). Finance available subject to status. The rate offered is always provisional and will depend upon your personal circumstances, the loan amount and term.

MADE IN BRITAIN 



D.S. FREEMAN

Painters & Decorators

- Residential & Commercial
- Interior & External
- Fully Insured
- All Aspects Undertaken

duncan@dsfreeman.co.uk

Tel: 01223 812920

Longmeadow

Morgans Hairdressers

Tel: 01223 811646

Creative styling for the family

- Creative cutting
- Hair up
- Colouring
- Colour correction
- Perming

Open: Tuesday - Saturday, Wednesday
until: 8.00pm



10 Herschel Court, High Street,
Bottisham, CB25 9DQ



Follow us on facebook

E.J. DENSTON

KITCHENS & CARPENTRY

All aspects of Carpentry & Joinery
New Build 1st & 2nd fix carpentry
Purpose made cupboards, wardrobes
& Bookcases

Kitchens supplied & fitted
Renovations & small build works



Tel: 01223 813279
Mobile 07711 578687

Carpentry Services

TONY MARTIN

Over 30 years experience

*Any carpentry jobs
undertaken — BIG or small*

Call Tony
for a free estimate
Tel: 01223 812786
(Bottisham)
Mobile: 07767475987

ARCHITECTURAL DRAWINGS

FOR

PLANNING & BUILDING REGULATION APPLICATIONS

NEW PROPERTIES, EXTENSIONS, LOFT CONVERSIONS ETC

CONTACT US now to arrange a FREE on-site meeting at your convenience to discuss your project.

ELY DESIGN GROUP

'Architecture by Professionals'

www.elydesigngroup.co.uk

01353 649649

mail@elydesigngroup.co.uk

Lloyds Gardens

Friendly Affordable Reliable Gardening Service

- All aspects of tree surgery
- Stump grinding
- Root ball removal
- Tree houses
- Garden Structures
- Bespoke clay pizza ovens

FULLY ACCREDITED AND INSURED

ALL WORK CARRIED OUT TO BS 3998 STANDARD
MANY HAPPY REFERENCES AVAILABLE ON REQUEST

Tel: 01638 744140

Mob: 07811 132709

WWW.LLOYDSGARDENS.ME.UK





DRAIN-PLUMB

*Plumbing, Heating & Drain
Services*

BLOCKED DRAINS CLEARED

- Gas Boiler Service & Maintenance
- Power Flushing of Boilers & Heating Systems
- Home Buyers CCTV Drain & Plumbing Surveys
- All Plumbing & Heating Repairs/Alterations
- All work Guaranteed

TEL: 01638 742873
MOB: 07932 773515

7 NESS ROAD,
BURWELL
CAMBRIDGE, CB25 0AA

TV AERIALS

SATELLITE

DIGITAL FREEVIEW

**Installations
Extra points etc.
Tuning in of TVs, Digiboxes etc.**

**Experienced local engineer
RICHARD FORTEY
01638 662119**

No Call Out Charge



J&J DRAKE



Fully approved electrical contractor

- All Work Certificated in Accordance with NICEIC
- Free no obligation quotations
- All aspects of electrical work undertaken such as re-wires, Periodic test and inspections, maintenance calls, New build Installations.
- However small you may consider your job it will be treated with the same attention to detail as every one of our jobs.

Your Local Electrician

Unit 24, Hall Barn Road Industrial Estate, Isleham, Ely, Cambs. CB7 5RJ
 Contact us on: 01638 781567 / enquiries@jandjdrake.co.uk

Improve, Don't Move!

Maximise the value of your home

- SPACE-SAVING - MAXIMISE YOUR GARAGE HEADROOM
- SECURITY-ENABLED AUTO-LOCKING SYSTEM
- CHOICE OF 21 COLOURS TO MATCH YOUR HOME
- REMOVAL AND RECYCLING OF YOUR OLD DOOR
- DEDICATED AFTER-CARE TEAM

GAROLLA

01223 902 011

ROLLER SHUTTER DOORS



LINES OPEN 7 DAYS A WEEK

www.garolla.co.uk



BESPOKE ELECTRIC DOORS MANUFACTURED IN THE UK

FREE FITTING
PAYMENT ON
INSTALLATION



PRICED EXAMPLE **£895**
COMPACT • UP TO 2.4M



GAROLLA ★ PREMIUM
Increased Security • Double Insulation
One-Touch Close

PRICED EXAMPLE **£1,990**
PREMIUM • 3.4M • ANTHRACITE

DB Electrical & Building Services

Dale Badcock

07718 122538

dbelectricalandbuilding@gmail.com

All domestic work undertaken

- Rewiring
- Lighting
- Burglar alarms
- Security Lighting
- Lighting design
- Controls specialist
- Renovations
- Alterations
- Kitchens & Bathrooms

91 Northfield Park

Soham

CB7 5XA

01353 720570

www.DBElectricalandbuilding.co.uk



Rebecca Golding

*now has her new salon
in Burwell*

Tues

9.30am-8pm

Thurs

9.30am-8pm



30 Years'

Experience

All aspects of

Hairdressing

Tel. 07742 997474

Free Parking at

67 Silver Street

Burwell, CB25 0EF



TIM PHILLIPS & Co.

Accountants

Independent, specialist service for:

Small Business • Self Assessment

Personal Taxation

Free initial consultation – no obligation

EASY, FREE PARKING

Copley Hill Business Park, Cambridge Rd., Babraham

Off A1307 between Wandlebury and Babraham

Tel: 01223 830044. www.tpaccounts.co.uk



My Village Handyman Services Ltd

- DIY Repairs & Odd Jobs
- Painting & Decorating
- Tiling & Flooring
- Gardening & Landscaping
- Patios & Decking
- Fencing, Sheds + Garden Studios
- Kitchen & Bathroom Installation
- Gutter Clear and Jet Washing
- Leaking Taps & Plumbing Jobs
- Carpentry & Repairs
- Light Fittings, Sockets & Electrical Works
- Studio & Summer House Builds
- Brickwork & Small Builds
- New Doors or Locks
- Security & Garden Lighting



If your job is not listed, get in touch I'm sure we can help
Free no obligation quotes and advice provided
Your very local Handyman

Contact us to arrange a visit or quote

Call: **07500876376** or **01223 881700**

Email: info@myvillagehandyman.com Web: myvillagehandyman.com

Community Herb Bed News

What mixed weather we have been having! At least gardens and the Herb beds are being well watered! The plants are growing well.

Jan and I added a bit more colour to the beds before the coronation weekend, with some red and yellow primulas from Red 2 Green.

Basil, Sorrel and Parsley have been sown in pots and when ready, some will be added to the beds, so do pop along and take snips of any herbs you may need for your dinner!

We will also be adding a curry plant and bergamot when the plants are big enough, which will add further interest. The curry plant gives off a wonderful pungent scent.

Herb of the month; BERGAMOT (the plant that we have is Bergamot Lemon-Monarda citriodora)

Growing - Bergamot enjoys a sunny position in rich and well-drained soil. It can also be grown in pots or tubs.

Bergamot is probably most well-known for flavouring Earl Grey tea. The fragrant flavour comes from the oil of the bitter inedible, citrus bergamot orange fruit.

However, the lemon bergamot plant, which has attractive pink purple flowers, is attractive to bees. In America it was once called Prairie Bergamot, as the native flower was found growing in dry meadows. However, it is now commonly grown in cottage gardens. Its other name is 'wild bee balm'.

Suggestions on the plant label include: "try with fish, use in pot pourri or add leaves to salads or use in tea infusions"



RECIPE A quick search on the internet brings up many results for using bergamot to flavour and decorate (with edible flowers) cookies, cakes and tea, some meat dishes such as game and also fish.

Caution please check carefully that you have correctly identified your plant before using any part for edible usage.

The simplest idea is a bee balm tea infusion:

Ingredients

1 cup of water. 3-4 freshly picked bergamot leaves 4-5 bergamot flower petals.

Method:

Boil the water

Add the leaves and petals to your tea infuser

Add boiling water to the infuser

Allow the tea to steep for 5-10 minutes,

or until it tastes how you prefer

Pour the tea, straining it through the infuser

Add a sweetener if desired such as honey or sugar

Relax and enjoy!

K.J.P.

Building/Maintenance



Including:

Design, landscapes, patios, fencing,
gardening, decking, painting,
decorating, tiling, all interior work,
etc.

Tel: 01223 812021 or
mobile 07799 504043



SANICLEAN

DRAIN & PLUMBING SERVICES

R. BRISTLEY Est. 1974

9 Collings Place, Newmarket

- *Drains Unblocked Fast*
- *Toilets, Baths and Sinks*
- *Guttering and Downpipes*
- *Drain repairs and CCTV Surveys*
- *High Pressure Water Jetting*
- *Domestic and industrial*
- *All Work Guaranteed*

Newmarket (01638) 662439

Mobile 07970 038404

www.rbristley.co.uk

**FREE
Estimates &
Advice**



BRADSTONE

- All Driveways & Block Paving
- Site & Garden Clearance
- Driveway Cleaning & Sealing
- Fencing, Trellis Work & Decking
- Patios & Paths
- Turfing & Seeding
- Concrete Crushing
- Grab Hire & Digger Hire

amsbuildingandlandscaping.co.uk

OFFICE: 01638 721 893 | SITE: 07789 261 266



The garden is fresh with colour and sound, the flowers are blooming, and the birds are singing (very loudly!) The Herbaceous Garden is beginning to show off its annual colour and invite visitors in for a closer inspection of delphiniums, hostas, and alliums. Don't miss this garden looking its very best towards the end of June- early July. That's not all there is to see in the garden, this year the Formal Garden will be looking quite different from previous years with a display of orange and white African Marigolds.

Due to the dahlia plant stock suffering a virus causing a reduction in flowering and a reluctance to root easily from cuttings the team have sent a few dahlia plants to the Plant Conservation Centre to undergo micro propagation. There has been some research into Rose sickness, which shows positive effects of growing a certain species of Marigold in soil previously having had sick roses growing, and we're hoping to have a similar effect on the Dahlias. Don't worry though, our usual Dazzling Dahlia display in the Dahlia Garden has not been affected and displays will begin to look good towards the end of August.

The Magic of Books display is highlighting some beautiful and unusual books from the collection, opening up their pages and revealing some truly unique illustrations and bindings. Each month we are showcasing books chosen by staff and volunteers with the Wonders of the Library display. In May, Beth, our Welcome and Service Assistant, chose two books, both excellent examples of early 20th century book-binding. She is especially fond of the cover of 'The life of Napoleon Vol III' with its Cosway-style binding, elaborate floral design, miniature painting, and framed edge with pearls, and in contrast the simple yet elegant cover of 'Sonnets of Shakespeare.' Come along in June to see this month's Wonder of the library and discover more about the Magic of Books at Anglesey Abbey.

HARRISONS OF BURWELL LTD

Plumbing and Heating

FREE ESTIMATES GIVEN

Gas Boiler Servicing

Clarence House, 7 Ness Road, Burwell, Cambs CB25 0AA
Telephone: Newmarket 01638 742873 - Mobile 07932 773515
email: harrisonsofburwell@gmail.com

Gas Safe Registered

HAYDEN

THE CLEANING SPECIALIST

Merrywood
8 Lode Rd. Bottisham CB25 9DJ
01223 813766 or 07919561665
Email: hayden.woodruff@btinternet.com

WOULD YOU LIKE YOUR CARPETS
OR UPHOLSTERY CLEANED?

HAYDEN IS LOCAL TO THE AREA,
OFFERING FREE QUOTATIONS
AND ADVICE

WE ALSO CLEAN WINDOWS WITH
OUR NEW REACH AND WASH
SYSTEM OR TRADITIONAL, YOUR
CHOICE

k-domestic electrical solutions



Complete installations & rewires
Small and large alterations
Lighting
Internal & External work
PAT testing
Periodic Inspection & Reports
Full Inspection, Testing,
Verification & Certificate issue
LED
Under Floor Heating
Voltage Optimization

your **local** electrical service of choice and recommendation

Karl Howe
01638 610438 M: 07541 008613

Email: enquire@k-elecsolutions.com Website: www.k-elecsolutions.com

Fully qualified Part P and 17th Edition

**City &
Guilds**
Qualified



**BOTTISHAM COMMUNITY
LIBRARY ASSOCIATION**

LIBRARY OPENING HOURS

TUESDAYS

3.00-5.00 and 6.00-8.00

WEDNESDAYS

10.00-11.30

THURSDAYS

3.00-5.00

FRIDAYS

6.00-8.00

SATURDAYS

10.00-12.00am

*Working in Partnership with the
County Library Service.*

**NEWMARKET
COMMUNITY
CINEMA**

The Stable, 65 High Street,
Newmarket. CB8 8NA

Film shows for June 2023

June 19th -

**Reach for the
Sky (U)**

Doors open at 6.30pm with the
film starting at 7.30pm.

Admission is £6 which includes
free refreshments.

If you would like to reserve seats,
please ring

07756 853714



Need a little extra Financial Help?

We don't have a magic money tree, but we may be able to help!

BOTTISHAM LOCAL CHARITIES

***Bottisham Local Charities can offer support to people with a minimum of
two years residence in the village**

For further information or an application form contact the Clerk:

bottishamlocalcharities@gmail.com

01223 813774 or 0792 042 5154

'Your Friendly, Local Wood Burning Stove Specialist'



VISIT OUR SHOWROOM!

**Whitelands Farm
Newmarket Road
Bottisham
Cambridge
CB25 9BD**

**Mon – Closed
Tues – 12.30 – 14.30*
Wed - Appointment Only
Thurs – 12.30 – 14.30*
Fri - Closed
Sat – Appointment Only
Sun – Closed
(*School holidays by
appointment only)**

**- Email & telephone enquiries
dealt with Monday – Friday
09.00am – 5.00pm
 01223 703184**

Email: sarah@cambridgestoves.co.uk

www.cambridgestoves.co.uk

CALL NOW FOR YOUR FREE, NO
OBLIGATION SURVEY AND
QUOTATION, OR MAKE AN
APPOINTMENT TO VISIT OUR
SHOWROOM

ALL ASPECTS OF BUILDING WORKS TO
YOUR FIREPLACE UNDERTAKEN

FAST, RELIABLE AND EFFICIENT
SERVICE CARRIED OUT BY QUALIFIED
HETAS ENGINEERS

LARGE SELECTION OF WOOD
BURNING STOVES ON DISPLAY



MOBILITY EQUIPMENT

STAIRLIFTS, SCOOTERS, WHEELCHAIRS, RISING CHAIRS AND
BEDS, WALKERS, TOILET & BATHING AIDS, KITCHEN &
HOUSEHOLD AIDS, CONTINENCE CARE, FOOTWEAR

SPARES, SERVICE, HIRE OF EQUIPMENT
HOME VISITS AVAILABLE
FRIENDLY AND CONSIDERATE SERVICE GUARANTEED



SCOTSDALES GARDEN CENTRE
HORNINGSEA
CB25 9JG
01223 863908
www.orchard-mobility.co.uk

Monday to Saturday 9.00 – 5.00

BOTTISHAM PARISH COUNCIL

CHAIR

JON OGBORN _____ jon.ogborn@bottisham-pc.gov.uk

VICE CHAIR

JOHN WILSON _____ john.wilson@bottisham-pc.gov.uk

PARISH COUNCILLORS

NADENE CUNDELL _____ nadene.cundell@bottisham-pc.gov.uk

MARK OVERTON _____ mark.overton@bottisham-pc.gov.uk

STEVEN O'DELL _____ steven.odell@bottisham-pc.gov.uk

NEIL WINKCUP _____ neil.winkcup@bottisham-pc.gov.uk

JAWAHAR SWAMINATHAN _____ jawahar.swaminathan@bottisham-pc.gov.uk

JOHN AUSTIN _____ john.austin@bottisham-pc.gov.uk

PARISH CLERK

SAM CHAMBERS-TURNER - 41 Stow Road, Quy, CB25 9AD

_____ clerk@bottisham-pc.gov.uk - Tel: 07369248998

DISTRICT COUNCILLORS

CHARLOTTE CANE _____ charlotte.cane@eastcambs.gov.uk - Tel: 07976 607512

JOHN TRAPP _____ john.trapp@eastcambs.gov.uk - Tel: 01223 812120

COUNTY COUNCILLOR

ALAN SHARP _____ alan.sharp@cambridgeshire.gov.uk - Tel: 07794 292941

Useful Information

Bottisham Website:	www.bottisham-pc.gov.uk
Parish Council Chairman: Jon Ogborn.....	07486 372780
Parish Council Clerk: Sam Chambers-Turner, clerk@bottishampc.gov.uk.....	07369248998
Holy Trinity Church: Stuart Field, Churchwarden	01223 604019
Roman Catholic Priest: Monsignor Eugène Harkness. Parish of St Philip Howard	01223 211235
RE:NEW/Lode Chapel: Rev. Alan Brand.....	01223 812558
Bottisham Surgery: Enquiries and Appointments	810030
Out of Hours only - Urgentcare Cambridge.....	111
Bottisham Library: Library hours, <i>see advert previous page</i>	01223 812354
Cambridgeshire Police HQ:	01480 456111
Cambridgeshire Police: (NON-URGENT MATTERS)	ring 101
In EMERGENCIES	ring 999
Local East Cambs Policing info: www.cambs.police.uk/Neighbourhood-Policing/East-Cambs	
Neighbourhood watch co-ordinator: kevin.g.evans@ntlworld.com.....	01353 614892
Bottisham Pharmacy:	812321
Bottisham Community Sports and Social Club: Secretary Bev Clowes, Bottishamcscas@gmail.com	812063
Bottisham Community Primary School:	811235
Bottisham Village College, School:	811250
Evening Classes, Clubs and Youth Club Information	811372
Bottisham W.I.: Secretary - Jenn White • mrandjw@btinternet.com	811600
Bottisham Scout Group: Group Contact: Linda Jones.....	813040
1st Bottisham Rainbows/1st Bottisham Brownies: Kay Pearce.....	811055
Girlguiding Bottisham District: Cambs County office • www.cambseastguides.org.uk	01223 813917
Bottisham & District Gardening Club: Secretary: Julia Green.....	811467
Bottisham Bowling Club: Peter Clowes, Secretary	811565
Bottisham Carpet Bowls Club: Nora Watson, nora@gandnwatson.uk.....	812121
Bottisham Cricket Club: Chairman: Will Allen, Chairman@bottlodecricket.co.uk	07713 007757
Bottisham Youth Football Club: Adam Bridgland, adambridgland@hotmail.com	07764 488599
Bottisham Local Charities Trustees: secretary - Jonathan Barrett	07920 425154
Bottisham Pool Association: Manager - Harry Bubb	811121
Bottisham Royal British Legion Branch: PoC, Peter Walker;	811402
www.Britishlegion.org.uk/branches/bottisham	
Queen's Court Day Centre:	811905
East Cambridgeshire District Offices:	01353 665555
East Cambridgeshire District Councillors:	
Charlotte Cane, 34 Swaffham Road, Reach	07976 607512
John Trapp, 104 Commercial End, Swaffham Bulbeck	01223 812120
Cambridgeshire County Councillor: Alan Sharp, Alan.sharp@cambridgeshire.gov.uk	
.....	01638 507485/07794292941
MP for Constituency: Lucy Frazer, MP, lucy.frazer.mp@parliament.uk	
www.lucyfrazer.org.uk	
Cambridgeshire Trading Standards Helpdesk:	0845 3030666
Milton Road Tip: Apr to Sept – Weekdays 9.00am-8.00pm: Weekends 9.00am-6.00pm	860674
Oct to Mar - 9.00am-4.00pm	
CRSSET Editor: email: BottishamCresset@gmail.com	
Treasurer, Advertising rates and payment: Rhona Walker, 94 High St	811402
Distribution: Ian & Helen Cole.....	812573
Design/Artwork: ONG (Old Newton Graphics) • www.codge.com.....	01449 675548
Printing: Falcon Printing Services, www.falconprinting.co.uk, jason@falconprintingservices.com.....	891286

The Cresset: While every effort is made to ensure accuracy we cannot accept liability for any mistakes or misprints. The views of, or any opinions expressed, are not those of the EDITOR. The Editor cannot accept any responsibility for statements made in advertisements

MANCHETTS

Car Truck & Van Centre



Van Hire from £49

01638 661113

www.manchetts.co.uk

1 Victoria Way Studlands Industrial Estate Newmarket Suffolk CB8 7SH

E.C. AUTOCARE

(Est. 1980)



SERVICING & REPAIRS
Cars & Light Commercials
Diesel & Petrol



MOT TESTING STATION

**Servicing to all makes of Cars
& Light Commercials**

- ✚ **ENGINE MANAGEMENT DIAGNOSTICS**
- ✚ **TYRE - BRAKES - EXHAUSTS**
- ✚ **AIR CONDITIONING SERVICING**
- ✚ **GEARBOX SPECIALISTS** MANUAL & AUTOMATIC

FAST, FRIENDLY, FAMILY BUSINESS

56 HIGH STREET, BOTTISHAM

Also at

A1303 SERVICE STATION, BOTTISHAM
(behind Brian McKay)

Tel.01223 811122 or 01223 812357

