



Happy  
New  
Year

2023



A  
Bottisham  
Coronation  
Celebration

For  
His Majesty King Charles III  
and  
The Queen Consort

To find out more & help plan village  
initiatives you are cordially invited to  
attend a public meeting  
on  
Tuesday 24<sup>th</sup> January at 7:30pm  
at  
Bottisham Social Club, Downing Close

All are welcome incl.  
village societies & businesses



## HAPPY NEW YEAR



Christmas for us in this country ends with the celebration of Christmas day as being the finale to that exciting period of build-up which excites the kids and gives everybody the excuse to eat and drink more than is good for us. It also is the day that we usually exchange presents and gifts. (Unless you are really posh and do the presents on Christmas Eve.)

But the twelve days of Christmas actually starts on Christmas day and runs through to twelfth night on the 5th of January.

We tend to count that as the date by which we must clear away the decorations and take down the cards, whereas really that is the symbolic day when the three Kings brought their gifts for the newly born Christ child.

So it is then that in Spain and many other countries, that is the day when families get together to celebrate and as the Kings did, that is the day they exchange presents.

Whatever you did yourselves, I hope you had a great time, saw the people you wanted to see and avoided those that you didn't.

A new year now and may I wish all our readers a very Happy New Year.

2022 was a strange year in many ways. We still had that Covid issue to deal with (and still do), but it seems to be controllable. The weather has also had a major impact. Dry drought conditions and high temperatures brought home, I think, as never before, the looming issue of global warming and the inevitable consequences of rising sea levels.

We must all now becoming acutely aware of our own impact on our world, either from use of plastics, the energy that we use, or even the choices we make of the cars that we buy and the way we heat our houses.

The war in Ukraine and Putin's blackmailing of Europe (for that is what it is, and he will pay for that in the end), has focused our eyes on what energy we use and where it comes from.

As I write this, the temperatures have plummeted and today it is -4°C.

In this country we get temperatures like this by exception, but in central Europe, in areas like Ukraine, it can get down to minus 20°C for weeks on end! Add to that the power cuts and damaged power stations and you can't begin to imagine what they are going through.

Let's hope and pray that sense can prevail and there is a resolution to the Ukrainian struggle and that Putin sees the futility of what he is trying to do. One day the Russian population will get the truth and then we will see him brought to account.

In the meantime, back here in Bottisham, there is a new year to get on with and first up is the notice of a public meeting to pull together the ideas and set a plan to celebrate the Coronation of King Charles III. An opportunity not to be missed. All ideas and everybody's involvement would make it a memorable event for Bottisham. Let's not miss the opportunity.

Finally, we now know what Sports nut's other passion is. Whether he calls himself a true twicher, or just like most of us, takes note of what is in the garden, he has a talent for writing it down and sharing his enthusiasm. For his previous passion, I would like to thank him and look forward to hearing more about the local bird life.

Have a great month and I hope 2023 brings you all you wish for.

*Your Editor*

## *News From Holy Trinity Church Bottisham*

By the time you read this the Revd. Sue Giles will probably have taken her final church service in Bottisham, which will be on January 1st. We are hugely thankful for all she has done during the 10 years she has been in the benefice, (not to mention nearly 40 years in the ministry). Her years with us have brought us all great blessings. We will miss her, her hard work, generous spirit, and many gifts immensely, but appreciate that Sue and Jonathan deserve a very well-earned rest together! We wish them every happiness and blessing as they relocate to York. Sue's last service in the Benefice will be at Swaffham Prior on Sunday 22nd January at 10.30am. Why not come and give her a good send off?

We will now enter an 'Interregnum' when we shall be without a vicar for an unknown period (often a year or more) during which time the Parochial Church Council has the responsibility of organising all the church events including the services. I am delighted to report however that for the services on the first Sundays of February and March, Holy Communion will be led by Bottisham resident the Revd. Elizabeth Caswell and Sarah Maxwell will continue to lead the Morning Prayer services on the third Sunday of the month. All these are to be held at the usual time of 10.30am. We have managed however to get a minister to cover all the first Sunday Holy Communion services up to and including 3rd December 2023, including some senior clergy from the diocese – more next month!

We had several most enjoyable events during December. On December 3rd, a packed church enjoyed our final Coffee and Cake Concert of the year with my talk entitled 'The History of our Christmas Carols', the wonderful singing voice of Sarah Maxwell, the marvellous organ playing of Jonathan Giles as well as the audience heartily joining in singing the carols themselves. Sadly, this was the last time that Jonathan will be able to help. Does anyone know of an organist/pianist who may be able to help in future concerts? This was the last of these concerts until the Spring. However, if anyone knows of persons/groups or entertainment suitable for a general audience then please contact me.

Julie Bristow, with her choirs Cloud Nine Community Choir, Eclipse Vocal Group and Rising Up Youth Group gave two highly enjoyable concerts in a packed candlelit church on 10th December entitled 'Winter Hours' - celebrating winter with music and poems by Mary Oliver. The money raised went to supporting local families at Christmas by providing food boxes and vouchers for the local Co-op store.

It was good to welcome back the Primary School for their Carol Service in their last week of term.

We are extremely grateful to William and Steven Newman, of Parsonage Farm, for giving the church a fine Christmas Tree which was enjoyed by those taking part and attending our pre-Christmas events.

You may have noticed scaffolding up the side of the church and onto the roof. This was there to 'patch' one or two holes (which turned out in fact to be many cracks) in the lead roof. Unfortunately, the news is not good. The contractors found extensive deterioration and corrosion on the underside of all the lead roof panels inspected, caused by damp from condensation made worse by wood-borne acids from the supporting oak beams. This was only just discovered at the time of writing but will probably mean we will have to look at

## Contents

Services in the Anglesey Benefice....5	Bottisham Adult Learning Association (BALA).....29
Community Library .....5	Public Transport Matters.....31
Parish Council Report7 & 9	News from Wicken Fen Nature Reserve.....33
Planning Notes .....9	Reasons to be Cheerful... ..35
District Councillors' Report...11 & 13	Bottisham and District Gardening Club.....37
Community Herb Bed News .13 & 15	Anglesey Group Mothers' Union...39
Cambridgeshire Fire & Rescue Service.....17	Bottisham Bird Brain.....41 & 43
Bottisham Bowling Club .....19	East Anglian Air Ambulance .....45
Sales, Wants and Swaps.....19	Ukrainian Family Update.....49
Jolley Old World .....21	Ukrainian Family Update.....51
News from Bottisham Medical Practice Patients' Participation Group .....27	Cambridge, Past, Present & Future.....51
	Red2Green News .....51
	Anglesey Abbey .....57

replacing the whole roof in the not-too-distant future. This of course will be extremely costly and for which we will have to apply for grants from several organisations.

Our toddler group for children and their parents continues to be held on a Tuesday morning – anyone is welcome to join us. The Faculty has now finally been obtained from the Diocese for permanent removal of the unfixed north aisle pews and this will give us a more versatile space. If anyone is interested in purchasing one of the non-damaged pews, then please contact me. The rotten pew which has been cluttering the rear of the church for months has now been removed and we hope to open this space in the not-too-distant future for an informal coffee morning for adults at the same time as the toddler group is meeting nearby.

I hope you had an enjoyable Christmas and may I wish you a happy and peaceful New Year

*Stuart Field, Churchwarden*

## Reconnect to your life

Whatever your hearing difficulty, angli-EAR Hearing uses the most up-to-date tests and equipment to find the best solution for you.

Where to find us:  
Audiology House (Cambridge)  
15 Woollards Lane  
Great Shelford  
Cambridge  
CB22 5LZ



Book your  
**FREE**  
ear health  
check today

**Independent audiology  
experts you can trust**



Hearing  
Assessments



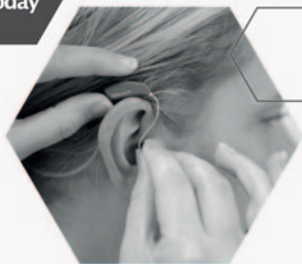
Ear Wax  
Removal



Hearing  
Aids



Tinnitus  
Solutions



**BOOK ONLINE**

[www.angliearhearing.co.uk](http://www.angliearhearing.co.uk)



**01223 661399**

[info@angliearhearing.co.uk](mailto:info@angliearhearing.co.uk)

## *Services in the Anglesey Benefice*

<b>Sun. Jan. 1st</b>	<b>9am</b>	<b>Online service</b> on Zoom <b>Village Worship</b> - Quy Village Hall
	<b>10.30am</b>	<b>Holy Communion</b> - Bottisham
<b>Wed. Jan. 4th</b>	<b>8pm</b>	<b>C by C (a short contemplative service)</b> – online via Zoom
<b>Sun. Jan. 8th</b>	<b>9am</b>	<b>Holy Communion</b> - Quy
	<b>10.30am</b>	<b>Family Worship</b> - Swaffham Prior; also on Zoom
<b>Sun. Jan. 15th</b>	<b>9am</b>	<b>Online service</b> on Zoom <b>Morning Prayer</b> - Quy
	<b>10.30am</b>	<b>Holy Communion</b> , Swaffham Bulbeck <b>Morning Prayer</b> - Bottisham
<b>Sun. Jan. 22nd</b>	<b>9am</b>	<b>Online service</b> on Zoom
	<b>10.30am</b>	<b>Holy Communion (BCP)</b> - Swaffham Prior (Revd Sue Giles' last Sunday)
<b>Sun. Jan. 29th</b>	<b>9am</b>	<b>Online service</b> on Zoom
	<b>10.30am</b>	<b>Holy Communion</b> - Lode
<b>Every Thurs.</b>	<b>10.30am</b>	<b>Holy Communion</b> - Lode

You are very welcome to attend any of these services. Please check the Church notice board for current information; or email [admin@angleseygroupparishes.co.uk](mailto:admin@angleseygroupparishes.co.uk), which is also the address to request the Zoom link.

## *Community Library*

Happy new year. A resolution idea for you and your family – please continue to use the library or join if you are not a member. We have a large number of books to borrow suitable for all ages and reading tastes including lots of large print books.

We have many jigsaws to borrow for free, 500 or 1000 pieces, and several children's ones and always remember, the library is somewhere to come and be in the warm.

We supported the BCSASC Christmas Fair early in December and whilst we did not make a great deal of money, we were pleased to be able to move books so generously donated, to grateful new owners. We have regular book sale customers who come with large bags and go away with them well filled. We then dispose of the remaining books to various charities, local hospices and also to Waitrose, Tesco and Scotsdales at Shelford. Thank you to all who supported us.

We have booked another **Library Quiz night on Saturday 18th February**. Please make a note of the date and start getting your team together.

We shall **re-open** after the Christmas break on **Tuesday 3rd January** for the afternoon and evening sessions.

*Sylvia Overton*



**BOTTISHAM  
COMMUNITY SAFETY OPEN FORUM**

**SAVE THE DATE**

**WEDNESDAY 8TH MARCH 2023 at 7pm**

## **COME & HAVE YOUR SAY**

If you have concerns about any aspect of community safety in Bottisham, whether anti-social behaviour, road safety or anything else then come along to this meeting. It is a chance to meet and ask questions of representatives of some of the key groups and authorities impacting on life in Bottisham and working to keep us safe. The meeting is being hosted by your Parish Council, with support from East Cambs Community Safety Partnership.”

If questions can't be answered immediately, the panellists will get back to you as soon as they can. After the forum, the panel will also take away the issues raised and implement a 3-month plan. There will then be a community update afterwards.

**So, Save The Date: 8<sup>th</sup> March 2023**

### **SUPPORTING RESIDENTS**

#### **SERVING THE COMMUNITY**

**Location:**  
Bottisham Sports & Social Club

**Date & Time:**  
Wednesday 8<sup>th</sup> March 2023  
Doors open at 6.30pm - 7pm start

**Meet Representatives From:**

Cambridgeshire Police  
Constabulary

Bottisham Village College &  
Primary School

East Cambs District Council

County Councillors

Road Safety & Highways



# *Parish Council Report*

May I take this opportunity to wish all residents a very happy and prosperous New Year.

Jonathan Giles retires as Clerk this month after a two week hand-over to our new Clerk. We are immensely grateful for the sterling support Jonathan has given to the Council and the village in his, sadly all too brief, tenure as Clerk. We wish him a long and happy retirement.

We are very grateful to have secured the services of Alice Bettoney as Jonathan's replacement and she very capably took her place as Clerk at our 5th December meeting, where we were also pleased to be able to co-opt John Austin as councillor. John is a long standing resident of the village and will be a very valuable addition to the Council. However, that still leaves us with a remaining vacancy to be filled. If you are reading this, please could I ask you to consider if you might be able to contribute to the life of the village by serving as a councillor. We have a number of important projects coming up in the near future that will contribute to the welfare of the village and we need your support. Please contact the Clerk if you would like to find out more. No specific qualification is required, apart from being a resident who is willing to serve your village - as training is provided to help you in your role.

I recently heard second hand of a criticism being made that councillors "do nothing for all the money they are paid". To be clear, Parish Councillors are completely unpaid and serve simply out of a good heart, but with the reward that they can make a real difference to the lives of fellow residents. If you feel we "do nothing", then please offer your services and you will soon discover the immense amount of work that goes on behind the scenes. Do also thank your councillors on occasion - we tend to only hear from residents with a grumble or complaint!!

Buses continue to dominate our thoughts and representatives from the Council are working with the A to B1102 group in seeking to reconnect Bottisham with other local villages. We are grateful for the support of our MP Lucy Frazer and County and District Cllrs in this. However, we are unlikely to see any changes before 1st April 2023, when the current Combined Authority funding period comes to an end. A matter that was discussed at the December Council meeting was a suggestion by Great Wilbraham PC to make a proposal to the GCP for "a (bus) route that links Lode, Quy, Bottisham, the Wilbrahams and Fulbourn to the Babraham Road P&R or the hub at the Biomedical Campus. This could also connect with buses from Burwell (via Swaffhams) to Cambridge on the B1102."

Great Wilbraham are looking for support from other local Parish Councils to assist them in making the submission by 23rd December. In discussion the Parish Council recognised the importance of this route for local residents making trips to work in South Cambridge and to visit Addenbrookes - and resolved to support the proposal. It might also help make the financial case for reinstating a bus route from local villages into Bottisham.

I would like to draw attention to an advert this month about a planned Bottisham mini-forum on community safety on 8th March. Although hosted by the Parish Council, it is facilitated by East Cambs Community Safety Partnership and follows on from previous

*Continued on page 9*



# The Little Beauty Room

•Based in Bottisham•

•07592 166489•

Services include • Nails • Waxing • Massage •

## Stitchshed Sewing

(Formerly Little Stitches)

### Repairs and Alterations

I am based locally and can help you with clothing alterations & repairs, curtains, blinds and cushions

### Sewing Classes

If you wish to learn to sew, then please call for a chat.

Classes at the Stitchshed or private home tuition available for:

Dressmaking  
Patchwork and Quilting  
General craft sewing

Getting to know your sewing machine!

**Tel:** 01638 745160  
**Mobile:** 07449 954590  
**Email:** [stitchshed@gmail.com](mailto:stitchshed@gmail.com)  
**Web:** [www.stitchshed.blogspot.com](http://www.stitchshed.blogspot.com)

Little Legs  
MONTESSORI



Fassage Hall, Lode

*A calm, child led  
environment  
where children  
learn through  
meaningful play.*

- Montessori Preschool For children aged 2-4 years
- All types of government funding accepted
- Experienced, highly qualified staff.
- Using the Montessori method of education
- Weekly Forest School sessions

#### GET IN TOUCH:

07572 121463

[littlelegsmontessori@gmail.com](mailto:littlelegsmontessori@gmail.com)

[littlelegsoflode.com](http://littlelegsoflode.com)

#### OPENING TIMES

Monday and Wednesday

9am-3pm

Tuesday, Thursday, Friday

9am-12.30pm



**Continued from page 7**

successful exercises in other villages. If you have concerns about any aspect of community safety in Bottisham, whether anti-social behavior, road safety or anything else, then come along to this meeting. It is a chance to meet and ask questions of representatives from some of the key groups and authorities impacting on life in Bottisham and working to keep us safe. If questions or queries can't be answered immediately, the panellists will get back to you as soon as they can. There will then be a community update afterwards.

In the February and March Cresset we will also be including a "Questions & Feedback" form for you to complete either on the day or subsequently. After the forum, the panel will take away the issues raised and implement a 3-month plan. There will then be a community update afterwards.

Readers of the minutes will note that a significant part of the Council meeting was taken up in discussing our 23/24 budget and precept. This will be significantly impacted by a potential ECDC grant we believe we have secured towards the cost of the new cemetery purchase. I will discuss the budget in more depth in the February Cresset, when we will know for certain that the grant has been approved.

Before the recent Council meeting, we had a brief presentation in the public open session by Bottisham Football Club, who are seeking Council assistance in securing funding support to develop the club further. It was encouraging to hear how the club is growing with 45 volunteer coaches. A very good story and we wish it every success.

Finally, I would also like to highlight an opportunity for residents to attend an inaugural meeting to discuss how the village might celebrate the coronation of our King on 8th May. The meeting will take place at 7.30 on 24th January at the Social Club and the aim will be to establish an organising group to drive the celebrations forward. If you would like to find out more, please email: [kc3coronation@gmail.com](mailto:kc3coronation@gmail.com)

*Jon Ogborn*

---

---

## *Planning Notes*

---

---

**a) New applications**

22/01345/FUL – Swynford Manor, London Rd, Six Mile Bottom. Construction of pergola for outdoor wedding ceremony use, and hard and soft landscaping

22/01307/FUL – Site to south & east of Ox Meadow, Bottisham. Construction of temporary construction access located off Bell Rd

22/01291/ESF – Six Oaks Renewable Energy Pk, Newmarket Rd, Bottisham. Installation of a renewable energy park

22/01430/TRE - 1 Bottisham Place Bottisham. T1Oak - Remove damaged sections, shorten over extended branches and reshape

**b) Planning Applications Approved by ECDC**

22/01233/TRE – Bottisham Community Primary School. Removal of dead trees.

22/01234/TPO - Bottisham Village College Lode Road Bottisham. Crown reduction of three trees

**c) Notification of Tree Preservation Order**

TPO/E/11/22 – Howgar House, 41 Bell Road

---

# SG LAW

Plumbing & Heating Services

Cambridge based plumbing,  
heating and specialists in  
bathroom installations

## Services include

- Plumbing
- Heating & Servicing
- Bathrooms
- Commercial

T: 01223 812280 M: 07747552232 E: hello@sglawplumbing.co.uk [www.sglawplumbing.co.uk](http://www.sglawplumbing.co.uk)

## Saffron Salt Supplies

### Water Softener Salt

Salt tablets in 25 or 10kg bags

Block salt in 2x4kg packs

### Dishwasher Salt

Granules in 10kg bags

### De-icing Salt

White crystal in 25kg bags

delivery **FREE** to your door  
visit our website for full listing

[www.saffronsalt.co.uk](http://www.saffronsalt.co.uk)

Place your order by phone

**07980 581815** or email

[info@saffronsalt.co.uk](mailto:info@saffronsalt.co.uk)



## N.C.S.

**BRUSH ELECTRIC SWEEP  
ALL CHIMNEYS SWEPT**

- BIRDS NESTS REMOVED
- OIL & GAS BOILERS
- SOLID FUEL, STOVES FITTED
- SMOKE PRESSURE TESTING
- INSECT MESH, POTS, COWLS
- FLUE LINERS SUPPLIED & FITTED
- BIRD GUARDS & TERMINAL FITTED
- GUTTERS CLEANED & REPAIRED
- GENERAL PLUMBING WORK

**FOR FREE QUOTE CALL**

**07824 727277 or 01638 662760**

EMAIL

[NCS.NEWMARKET@YAHOO.CO.UK](mailto:NCS.NEWMARKET@YAHOO.CO.UK)

WEBSITE

[www.ncsnewmarket.co.uk](http://www.ncsnewmarket.co.uk)

\*Send text or e-mail for 10% discount  
Answers within an hour. • Waiting time approx. 1-2 weeks

**VERY CLEAN • Public liability insurance  
- Competitive rates -**

## *District Councillors' Report*

Happy New Year! Last month we informed residents that the District Council's Advice Bus would visit Burwell every Thursday morning and Bottisham every Thursday afternoon. Unfortunately, this did not happen regularly in December for a variety of reasons. Although we are assured it will be visiting regularly on Thursdays from January, we must advise anyone planning on visiting the Advice Bus to ring ECDC on 01353 665555 first to check it is coming. Alternatively, the CAB in Newmarket offers phone advice Mon-Fri 9.30am-3.30pm on 0808 278 7868, or drop-ins Monday, Tuesday and Thursday 9.30-2.30.

The Operational Services Committee received the Q1 (April to June) performance report on waste and street cleansing services—a reminder of how long it took the Council to get to grips with the problems which led to our rubbish not being collected.

- Overall performance of the waste collection service: target 90 per cent, quarterly performance 33 per cent
- Overall performance of the street cleansing service: target 90 per cent, quarterly performance 21 per cent
- Even by Q2 (July to September) waste collection performance had only recovered to 58 per cent against a target of 90 per cent, and street cleansing to 48 per cent also against a target of 90 per cent. As well as inconvenience to residents, these problems meant the crews were asked to work significant overtime in order to catch up on missed collections. It's hard work collecting our rubbish, and the crews deserve and need their rest days – they shouldn't have to work those days for several weeks in a row.

Another report to the Operational Services Committee on the condition of housing in East Cambridgeshire has produced some interesting headline findings.

- here are 37,556 dwellings in East Cambridgeshire. 72 per cent are owner occupied, 15 per cent private rented, and 13 per cent social rented.
- 5,338 dwellings in the private sector have Category 1 Housing Health and Safety Rating System (HHSRS) hazards. This equates to 16 per cent of properties.
- 951 dwellings in the private rented sector have category 1 HHSRS hazards. This equates to 17 per cent of properties in the private rented sector.
- The average Simple SAP rating (checking energy performance) for all private sector dwellings in East Cambridgeshire is 58, which is worse than both England (60) and East of England (60). For owner occupied stock the figure is 57 and for private rented stock it is 61.
- The total cost of mitigating category 1 hazards in East Cambridgeshire's private sector stock is estimated to be £20 million—16.5 million in the owner-occupied sector, and £3.6 million in the private rented sector.
- 10.7 per cent (3,487) of private sector dwellings, and 8.6 per cent (472) of private rented dwellings in East Cambridgeshire are estimated to have an EPC rating (based on Simple SAP) below band E.
- In the private sector stock, there are an estimated 4,680 dwellings with un-insulated cavity walls, and 3,251 dwellings with less than 100mm of loft insulation.

*Continued on page 13*

# FOUR SEASONS

PROFESSIONAL TREE SERVICES

Qualified & Professional Tree and Client Care

PRUNING ◊ LOPPING ◊ FELLING ◊ PLANTING ◊ REDUCING & RESHAPING  
CROWN RAISING ◊ HEDGETRIMMING ◊ THINNING ◊ POLLARDING ◊ STUMP REMOVALS  
OVERGROWN GARDENS PUT BACK IN SHAPE ◊ FRUIT TREES TREATED  
LOG & WOODCHIP SALES

FREE ESTIMATES & ADVICE WITH NO OBLIGATION

For quality jobs at a competitive price call:

01353 721665 – Mob 07771707921

All work carried out to BS 3998 Standard

A genuine family business est. for over 30 years – Fully insured

The Name you can trust.

We offer a 7day cooling off period

# WANTED

**ALL TYPES OF ANTIQUES, CURIOS & COLLECTABLES  
POLITE, LOCAL BUSINESS EST. OVER 25 YEARS  
IS LOOKING TO BUY THE FOLLOWING:**

- Old watches, clocks, scientific instruments ● Quality jewellery, costume jewellery, even items in need of repair ● Silver, silver plate, old copper & brass ● Glass, ceramics, china ● Militaria, weapons, medals, badges, uniforms, paperwork & photos ● Tribal art – masks, weapons ● Walking canes, sword sticks ● Sporting memorabilia ● Old toys, games and train sets ● Vinyl albums and singles ● Woodworking tools ● Furniture – antique up to 1970s

**Anything considered – give me a call before you throw it away**

**POLITE & CONFIDENTIAL SERVICE. GOOD PRICES PAID.**

**STEVE DURRANT 01638 507037 OR 07740 591194**

**Email: [svdservices51@gmail.co.uk](mailto:svdservices51@gmail.co.uk)**

*Continued from page 11*

- Analysis of the energy efficiency variables indicates that the owner-occupied stock has the highest average figures for the majority of variables (Simple CO<sub>2</sub>, energy and heat demand). The key objectives of the policy are to
- Enable elderly, vulnerable and disabled people to live in comfort and security in their homes.
- Increase the proportion of private sector housing that is of a decent standard, with a focus on those that are occupied by vulnerable households.
- Reduce fuel poverty.
- Support initiatives to bring long term empty homes back into use.
- Provide accessible information to the public to enable them to obtain assistance and advice on all matters around housing disrepair and energy efficiency.

The report concludes: “It is therefore important for East Cambridgeshire to develop suitable targeted strategies, policies and schemes to tackle these issues, working proactively with different departments and partner organisations, using enforcement action, where appropriate.

The Council’s Finance & Assets Committee agreed unanimously last month a new Interim Nature Recovery Network for East Cambridgeshire report and Biodiversity Net Gain document. The former document identifies a number of priority areas for biodiversity, namely Wicken Fen, the Ouse Washes and surrounds, Newmarket chalk grasslands, Chippenham Fen and River Snail, Breckland Edge, Soham grasslands, Boulder Clay woodlands, Chettisham Meadows to Ely North Country Park, and the river corridors of the Great Ouse, Cam, Lark, Little Ouse, and Soham Lode. The latter document is an interim working document prior to the implementation by the Government of mandatory Biodiversity Net Gain expected in late 2023.

For January and February, we will be holding our Councillors’ Surgeries by zoom, to save people coming out in the cold and the dark. Our next Surgery Zoom will be at 6.30pm on Tuesday 17 January – Meeting ID: 865 7631 8040, Passcode: 490667. If you prefer to join by ‘phone, the number is 01314 601196. Or you can contact us directly at any time – [charlotte.cane@eastcambs.gov.uk](mailto:charlotte.cane@eastcambs.gov.uk), 07976 607512; [john.trapp@eastcambs.gov.uk](mailto:john.trapp@eastcambs.gov.uk), 01223 812120

---

---

## *Community Herb Bed News*

---

---

Jan and I gave the herb beds a tidy up on Saturday 12th November, as we had not time to do so before that. We also added a few Violas, as sadly the pansies have paused their flowering for a while, probably due to the amount of rain we had at the end of October. Hopefully they will soon be back in flower, to spread more cheer. It is heartening to see that most of the perennial herbs are still thriving. There have been a couple of casualties including our Lovage plant. We will fill in any gaps, as we obtain more herbs over the next several months.

Herbs doing well, which you can take a snip off now, are the Rosemary, Thyme, Oregano and Sage Please note, we have two Salvias currently in flower, which are a Tangerine and

---

*Continued on page 15*

# NEWMARKET COMMUNITY CINEMA

The Stable, 65 High Street,  
Newmarket. CB8 8NA

## Films for Jan, Feb and Mar 2023

Mon. 16th Jan – **THE DUKE (12A)**

Mon. 20th Feb. –  
**OPERATION MINCEMEAT**

Mon. 20th Mar. –  
**THE ADMIRABLE CRICHTON (U)**

Door open at 6.45pm  
film starting at 7.30pm.  
Admission is £6  
which includes refreshments.

If you would like to reserve  
specific seats,  
please ring **07756 853714**

# BURWELL COMPUTERS

SUPPORT • SALES • REPAIRS

☎ **01638 505930**

☎ **07901 556895**

support@burwellcomputers.co.uk  
www.burwellcomputers.co.uk



An accountancy  
service that covers  
everything your  
business needs

For more details contact Paul on

✉ info@cb25accounting.co.uk

☎ 07803 782423    🌐 cb25accounting



Sales, servicing, repairs and sharpening  
of all types of garden machinery.

Collection and delivery available.

Friendly, local and professional service.



**C.W.KIRK LAWNMOWERS**

01638 744 349

**CWKIRKLAWNMOVERS.CO.UK**

44 NEWMARKET ROAD BURWELL CAMBRIDGESHIRE CB25 0AE



**Continued from page 13**

a Blackcurrant sage. Whilst attractive as a flowering plant, did you know that they also serve a culinary use?

Do look them up and maybe try in your drinks or food? For example, Blackcurrant sage leaves and flowers can add a hint of blackcurrant to your drinks or to baked goods.

### **HERB OF THE MONTH - SORREL**

I have Sorrel in pots on my patio and these grow very well. They are great to be included as a cut and come again leaf, to be added to salads, sometimes in place of spinach. The leaves are best eaten young and tender.



My plant is a variegated Sorrel, which was gifted to me by a relative. It happily spreads itself to other pots. We did plant one in the Community herb beds, however its leaves have died back at the time of writing. If left alone, it usually grows back again. It has a tangy taste and before citrus fruits were introduced to this country, Sorrel would often be used to add a lemony tart like tang to dishes.

**Growing:** Sorrel prefers a sunny or partly shaded spot if planted out in borders, however it is equally good when grown in containers. Existing plants can be easily divided. Water well in dry weather, as this can cause the plant to set seed.

*Please contact us via [brownsjc46@gmail.com](mailto:brownsjc46@gmail.com) if you would like to make suggestions etc. Any favourite herb recipes that you would like to see included, please send them to me.*

*Thank you, Sarah Brown.*

### **RECIPE - SORREL SOUP SERVES 4-6 people:**

#### **Ingredients**

300g Sorrel leaves, stalks and mid ribs removed and shredded / 25g butter / 1 lg onion / 1 clove garlic crushed  
2 Large. potatoes- peeled and diced into 1cm cubes / 2tbs chopped parsley / 1 litre vegetable stock  
Salt and black pepper / 150 ml crème fraiche

#### **Directions**

- Wash the Sorrel well and then transfer to a large pan and cook over a gentle heat until tender. No extra water need be added, just that which is clinging to the leaves after they have been washed.
- Drain well in a colander.
- Dry the pan and melt the butter.
- Cook the onion and garlic over a medium to low heat until just soft but not brown.
- Add the potatoes and parsley and cook for a further 10 minutes.
- Stir in the stock with a little salt and black pepper to taste and simmer for 15 minutes.
- Add the Sorrel leaves and cook for a further 5 minutes.
- Remove from the heat and when the soup has cooled a little, blend or liquidise until smooth.
- Return to the pan and stir through the crème fraiche, reheat, but do not allow to boil.

**Enjoy!**

# **BOTTISHAM BOWLING CLUB**

**100+ CLUB 2022/2023**

**End of November 2022 Prize Winners**

1st Prize £35 Member No. 140 - 2nd Prize £25 Member No. 16

3rd Prize £20 Member No. 94 - 4th Prize £15 Member No. 71

5th Prize £15 Member No. 113 - 6th Prize £15 member No. 112

## **PREMIER INVESTMENT MANAGEMENT SERVICES LTD**

INDEPENDENT INVESTMENT ADVISERS Authorised &  
Regulated by the Financial Conducts Authority

Specialist in Isa's & Isa Transfer's  
Investment Planning & Portfolio Management

To arrange a free consultation ring **01223-882422** or email  
**pims@globalnet.co.uk** or visit **www.pims-uk.com**



# **BOTTISHAM**

## **SCHOOL OF MOTORING**

**Tel: 811556**

*All qualified instructors  
with extremely high  
1st time pass rates*



CFRS is keen to assist the population stay warm and live safely, not just this winter but always. With continuing cost-of-living rises to endure, especially energy, many people are looking at ways to reduce their usage and find alternative ways of heating their homes.

*Here are some general tips to help save safely this winter:*

- Check that all heating appliances are in good working order and not subject to outstanding recall – check the ‘Office for Product Safety and Standards’.
- Keep all flammable furniture and clothes well away from heaters and fires.
- Ensure appropriate fuels are burnt in fires and stoves to avoid chimney fires.
- Keep escape routes clear of clutter – parcels, heaters, shoes etc.
- Keep up servicing routines on gas boilers and appliances to prevent leaks and potential CO poisoning – Homeowners check your energy provider’s website re their Priority Services Register ( if eligible you may qualify for a free annual gas safety check ) – Landlords must arrange an annual gas safety check !

*Key areas and advice to try and help save on costs –*

**OPEN FIRES AN CHIMNEYS** – the Service attends around 100 fires a year involving chimneys, most of which could be avoided by following some simple safety tips:

- Appoint a skilled and technically competent chimney engineer – search HETAS.
- Keep flue shafts clear, well maintained and swept annually before winter lighting to ensure no accumulated debris might cause a fire. Inspect the brickwork and beams.
- Always use a fireguard to protect against flying embers.
- Make sure that embers are extinguished before turning in.

Portable electric heaters

Many may not have been recently used, perhaps kept for emergencies, so check that yours works safely and is plugged into a wall socket – NOT an extension lead or, even worse, an adapter! They must be cooled and switched off before moving, and not across a passageway.

Do not use them, gas or electric, in bathrooms or too near to wet drying clothes.

### **CANDLES!**

Whether being used for cooking (heaven forbid !), lighting ( to save electricity ), decoration, scent or as a religious symbol, these popular accessories can be dangerous.

- Use only a proper candle holder, eg a ceramic dish, on a level heat-resistant surface with plenty of space around it and away from draughts, curtains, furniture and other flammable surfaces.
- Keep candles out of reach of children and pets – dogs wagging tails !
- Never place on televisions or other polished surfaces
- Never attempt to move a lighted candle - or leave alight when going to bed !

On behalf of Cambridgeshire Fire and Rescue Service.

*Michal White*

For more information or to get in touch contact us at [firefire@cambsfire.gov.uk](mailto:firefire@cambsfire.gov.uk) or on 0800 9179994.

Like us on Facebook for regular updates [www.facebook.com/cambsfrs](https://www.facebook.com/cambsfrs) or follow us on Twitter @cambsfrs.



**LOCKSWIFT CAMBRIDGE SERVICES 24/7**  
 Security expert's local to you 24/7

**Emergency Callout**  
 07989 954682



**PROFESSIONAL SECURITY SERVICES**



LOST OR BROKEN KEYS



LOCK REPLACEMENTS



GAINING ENTRY



LOCK CHANGES

**YOUR PERSONAL WEALTH.  
 OUR PERSONAL RESPONSIBILITY.**

At Tilney, we have been helping clients achieve their financial goals for more than 180 years. Whether you are saving for retirement, want to pass on your wealth or would like to have your investments managed by an expert, we can do the same for you.

To find out how we can help you, please call our Cambridge office on **01223 452 840** or email **neil.trickett@tilney.co.uk** for Investment Management or **laura.ingram@tilney.co.uk** for Financial Planning.



**TILNEY**

PLANNING | ADVISING | INVESTING

Investments carry risk –  
 investors can lose money investing.  
**tilney.co.uk**

# *Bottisham Bowling Club*

Unbeknown to many the running of the club is an all-year-round activity and at the time of writing there are maintenance and organisational activities taking place to ready us for the upcoming season which will soon be upon us.

Under the watchful eye of Chris, our professional greenkeeper, our green is recovering nicely from the ravages of the dry summer and our in-house team of volunteers are busily tending to its needs to ensure that, once again, we have our playing area in award winning fettle for 2023.

The committee are also busy, registrations to submit, competitions to enter and so forth, thanks to one and all who are working tirelessly behind the scenes to ready the club for re-opening, which after all, is only some 20 weeks away!

In the closed season no games are played on our green but there are a gaggle of our members that meet on Monday lunchtimes to hone their skills using the indoor facilities at Chesterton, anyone else interested in this fun activity are more than welcome to join in or email Peter via the club email for further details.

This coming season our club is particularly keen to attract new members, young or old, male or female, experienced or novice bowlers. Why not get in touch express an interest now? We may not be at the clubhouse so often in the closed season but our lines of communication remain open and we can be contacted either by email at [bottishambowlingclub@gmail.com](mailto:bottishambowlingclub@gmail.com) or there are links to us on our website which can be found at [bottishambowlingclub.co.uk](http://bottishambowlingclub.co.uk). Our friendly team are always on hand to answer any queries regarding our fine sport or membership.

## **NEWS FROM OFF THE GREEN**

Our Christmas Dinner was particularly well attended this year and we need to offer thanks to The Links Golf Club, Newmarket, for welcoming us along and making the event so memorable.

Our annual quiz, held in The Social Club, was also a massive success, thanks to George and Hilda for bewildering the participants, and congratulations to "The Unhinged" who were first past the post to take the prizes!

Saturday 28th January is a date for everyone's diary, its our Burns Cheese & Wine Night! Tickets available at the bar in The Social Club @£10.00 per head.

*Until next time, B.B.C.*

# *Sales, Wants and Swaps*



IF YOU HAVE ANYTHING TO SELL OR WANT TO BUY OR EVEN TO SWAP, THEN THIS PAGE IS YOURS TO USE. Send details of Item, price and landline Phone Number to [BottishamCresset@gmail.com](mailto:BottishamCresset@gmail.com). Max. 5 Items. Entries by 12th of the month for next months issue.

<b>DESCRIPTION</b>	<b>PRICE</b>	<b>TEL</b>
<b>Beautiful framed print</b> showing the History of Bottisham	£10	811119

# M&P

## LANDSCAPE AND DESIGN

Patios, Block Paving, Fencing,  
Turving and all Gardening needs.

References available on request.

Local tradesman • Free estimates

PLEASE CALL

**01223 811144**

MOB **07837 358550**

## N & G Marsh of Burwell

Specialising in bespoke metalwork  
and engineering

- ❖ Welding services
- ❖ Handrails
- ❖ Gates
- ❖ Metal railings
- ❖ Tow Bars
- ❖ Mower repairs
- ❖ RSJs supplies

Services to Building  
and Agricultural Industries

Brian Marsh Engineer

Tel. 01638 741354 Mob. 07519 493664

Email; [Brian@n-g-marsh.co.uk](mailto:Brian@n-g-marsh.co.uk)

Website; [www.n-g-marsh.co.uk](http://www.n-g-marsh.co.uk)

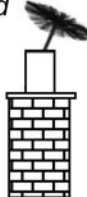
Unit 12, Meadow Ind. Estate  
Reach Rd., Burwell, CB25 0GH

## **R. BRISTLEY** Est. 1974

9 Collings. Place Newmarket CB8 0EX

### **BRUSH ELECTRIC SWEEP**

- *All Chimneys swept*
- *Solid Fuel, Oil and Gas*
- *Cowls, Nets and Pots fitted*
- *Carpets Cleaned*
- *Stoves Serviced*
- *Competitive Prices*
- *Very Clean*
- *Public Liability Insurance*



*also Classic Wedding Car Hire  
White Citroen DS21*

Tel: 01638 662439  
[www.rbristley.co.uk](http://www.rbristley.co.uk)

## **BED AND BREAKFAST**

### **THE MEADOW HOUSE**

2A High Street, Burwell,  
Cambridge. CB25 0HB



- En-suite rooms with colour TV.
  - Large car park and grounds.
  - Family rooms, children welcome.
  - English Tourist Board 4 Diamonds.
- Self catering cottage also available  
at Swaffham Prior.*

Brian & Hilary Marsh

Tel: 01638 741926 Mobile: 07519 493664

Fax: 01638 741861

Email: [Bookings@themeadowhouse.co.uk](mailto:Bookings@themeadowhouse.co.uk)

Website: [www.themeadowhouse.co.uk](http://www.themeadowhouse.co.uk)

Firstly; a very Happy New Year to everyone - I do hope that despite the troubles at home you were able to enjoy the Christmas season in whatever you did, wherever you were and whomever you were with. It is worth reflecting though, that we are not alone in our encounter with societal ills such as strikes, an energy crisis and the cost of living. These impacts are happening all over the world and in the main have a direct link to Russia's illegal invasion of Ukraine!

Moving on; I have just read Sports Nut's article in the December issue of The Cresset and I would like to express my regret and sadness that after ten years he feels he should retire his 'Thoughts of a Sports Nut' column.

If I recall we both started contributing Cresset articles at the same time. To research the chosen topic and then to pen the article is not something that can be achieved by a single stroke of the quill. It often requires checking for authenticity and several drafts over several weeks before the article is ready to be submitted. And so through The Cresset I would like to personally thank Sports Nut for his diligence in authoring his widely informative, enjoyable and thought provoking views on most things 'Sport'.

For my final theme I welcome that at last we have a reasoned response to a JOW article. Although its criticism distorts the narrative, the letter does at least offer an alternate viewpoint rather than proffer insults on social media. I am grateful however that the Editor did at least mention in his editorial that he had "also received positive comments" in support of the article - to which I can gratefully add those that I received personally.

I do however disagree with our Editor in that I would advocate that a healthy, 'grown up' debate is exactly what a village magazine is for - to occasionally stimulate the reader to reflect on something outside of their habitual 'comfort zone'. As James Marriott commented in The Times recently, "an intolerant minority is able to magnify its power with underhand tactics (public denunciation, and defamatory accusations of racism - typically on social media). The tolerant majority tend to view such methods as rather extreme".

My response to the author of the letter and others of like mind is this; there is a widely held view across the country, amongst the general public and the media that the manner in which particular groups and their advocates advance a cause, is in itself divisive and so perhaps the intensity of approach should be moderated.

Like Sports Nut I too have pondered and have concluded there is only so much that one can write that is Bottisham centric. I therefore apologise to The Cresset readership if it should appear that those who have been hostile to JOW have achieved their goal. Perhaps that group would like to muse over whether this lauds their conviction of moral superiority when it comes to tolerance, diversity and inclusion!

*JOW*

**"There are far better things ahead than we ever leave behind." - C.S. Lewis**

Copy deadline for next issue is 14 January.

Please send material to the editor at [BottishamCresset@gmail.com](mailto:BottishamCresset@gmail.com)

# ANGLIA TREE CARE

**LARGE ENOUGH TO COPE • SMALL ENOUGH TO CARE**

80% OF OUR WORK IS VIA RECOMMENDATIONS  
TREE SURGERY & FELLING • HEDGE MAINTENANCE  
STUMP GRINDING • FULLY QUALIFIED  
FULLY INSURED • 24/7 SERVICE  
All work carried out to BS 3998

**Free Estimates Given within 7 days**

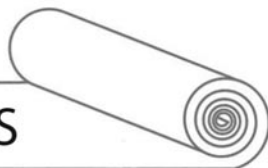


Tel. 01223 424454 • [INFO@ANGLIATREECARE.CO.UK](mailto:INFO@ANGLIATREECARE.CO.UK)

**M E M B E R**  
Guild of Master Craftsmen

## PETER FISHER

CARPETS - WOODS - VINYL



A wide range of floorings supplied and fitted.  
Please call for a free estimate and select in your home.

Tel: (Bottisham) **01223 811321**  
Mobile: **07879 494 685**

Great service for  
**30** years





# Keen Knitter?

Crazy about Crochet?

Mad for Macrame?

*Bring your needles and balls of wool!*

*Here's two local, relaxed social gatherings, for all levels of skill and interest*

## Lode & Bottisham

Day	Date	Month	Location
Tuesday	3rd	January 2023	'Anglesey in Stitches' <b>Lode</b> , The Shed
Wednesday	18 <sup>th</sup>		'Wool & Wine Wednesdays' <b>Bottisham</b> , The Bell
Tuesday	31 <sup>st</sup>		'Anglesey in Stitches' <b>Lode</b> , The Shed
Tuesday	7 <sup>th</sup>	February 2023	'Anglesey in Stitches' <b>Lode</b> , The Shed
Wednesday	15 <sup>th</sup>		'Wool & Wine Wednesdays' <b>Bottisham</b> , The Bell
Tuesday	21 <sup>st</sup>		'Anglesey in Stitches' <b>Lode</b> , The Shed
Tuesday	7 <sup>th</sup>	March 2023	'Anglesey in Stitches' <b>Lode</b> , The Shed
Wednesday	15 <sup>th</sup>		'Wool & Wine Wednesdays' <b>Bottisham</b> , The Bell
Tuesday	21 <sup>st</sup>		'Anglesey in Stitches' <b>Lode</b> , The Shed

### Anglesey in Stitches Further Information:

- Every odd numbered **Tuesday** of the month, **more than once a month at 8pm**
- Email Clare to be added to the distribution list [clarewilkes33@btinternet.com](mailto:clarewilkes33@btinternet.com)

### Wool & Wine Wednesdays Further Information:

- Every third **Wednesday** of the month, **once a month at 7:30pm**
- Keep up to date via the [Bottisham Events Facebook Page](#)





Fresh Flowers for All Occasions - Your local FLORIST

bouquets : weddings · funerals · workshops · parties · events

[www.millblossomflowers.com](http://www.millblossomflowers.com)

email: [millblossomflowers@gmail.com](mailto:millblossomflowers@gmail.com)

Tel: 07749 770286

Support local small business  
33 Mill Road, Lode, CB25 9EN

# Chiropody

## In your own home

**Save £5**

**off your first treatment  
when you present this advert.**

**Call 1638 814174 for an appointment**

**Daniel Harris BSc Hons MChS**

**Fully qualified and Registered with Health Care Professions Council**

# Bottisham Community Sports and Social Club.



## OPENING HOURS

Weekdays - 5pm to 11pm

Saturday - 12 noon to 11pm

Sunday - 12 noon to 9pm

### HALL HIRE

Do you need a venue for a  
party or meeting?  
Contact the club for  
details of our facilities for

Come along and enjoy

Darts/Pool/Snooker/Billiards/Table Tennis.

Plus, do not forget we have

BT Sport.

## Annual General Meeting - **Monday 16<sup>th</sup> January 2023**

Any member wishing to submit an item for the Agenda for the AGM will  
need to write to the Secretary before the **9<sup>th</sup> January 2023.**

Ad hoc bar work available, please contact  
the club for more details.

### What's on

**7th January - Scottish Comedienne on First Home Tour**  
Comedy Night - Entrance £3 members, £5 nonmembers

**28th January - Bowling Club Burns Cheese & Wine Evening**  
Tickets £10 from the bar at the Sports & Social Club

**11th February - Pam is back**  
An evening of music & Dance

**18th February - The Library Quiz night**  
A fundraising quiz in aid of The Library

**18th March - Bowling Club Race Night**

**6th, 7th & 8<sup>th</sup> May - Coronation Weekend**  
Details of events to follow

Please refer to the website. [www.bottishamsocialclub.co.uk](http://www.bottishamsocialclub.co.uk) for the latest information. If you wish to be kept up to date with the latest news, please email [bottishamesasc@gmail.com](mailto:bottishamesasc@gmail.com) with your email.31  
Downing Close, Bottisham, Cambridge CB25 9DD Tel. 01223 812063

**MARTIN BALL**  
♦♦♦  
FIREWOOD & TIMBER

[www.martinballfirewood.co.uk](http://www.martinballfirewood.co.uk)

[sales@martinballfirewood.co.uk](mailto:sales@martinballfirewood.co.uk)

Office • 01799 586 513  
Woodyard • 01371 830 503  
Mobile • 07980 258 003

Blunts Farm Yard  
Thaxted  
CM6 3PX



# LM

## GROUNDWORKS & LANDSCAPING

- Patios • Paving • Footings
- Drainage • Fencing & More

**Tel: 01638 743627      Mobile: 07934 642716**



**LANDMARK  
INTERNATIONAL  
SCHOOL**



A small international school in Fulbourn, South of Cambridge,  
**welcoming pupils aged from 4 to 16 years.**

We have experienced and enthusiastic teachers delivering a broad and engaging curriculum to small classes of pupils from Britain and beyond. We offer excellent pastoral care and are non-selective academically. Transport via school minibuses from central Cambridge and surrounding villages.

*To arrange a visit, please call:*

**Mary Greer on 01223 755100/07400 584015**

or email [mary.greer@landmarkinternationalschool.co.uk](mailto:mary.greer@landmarkinternationalschool.co.uk)

[www.landmarkinternationalschool.co.uk](http://www.landmarkinternationalschool.co.uk)

Landmark International School is a registered charity.

## *News from Bottisham Medical Practice Patients' Participation Group*

**The Pod:** This has been installed into the waiting room and is now hard wired into the computer system and so will record results directly onto the patient's medical records. Issues with the results will flag up and triage will be arranged. The instructions should be easy to follow, but reception staff will advise a patient how to use it.

**Dispensary news:** The dispensary staff have altered how they process prescriptions since August. An audit has been completed to review the outcome of this change. Prior to August 14% of prescriptions were not ready within 5 working days of request. Now 99.8% of scripts are ready by the target 5 days, those that are not ready are due to medication availability rather than anything we can change. Thank you for working with us during this period of change and hopefully our patients are now reaping the benefits of this work.

**Physiotherapy available at the Bottisham Medical Practice:** We now have 2 physios available to see patients. You can book an appointment directly with Alex or Dominic for joint pains, backache and mobility problems without consulting with a GP first. Physios are able to arrange investigations and organise onward referral where required.

**Scarlet fever & invasive Group A streptococcal infection:** Rates of Scarlet fever & Group A streptococcal infection remain unusually high for this time of year in children. Early recognition and prompt initiation of treatment can be lifesaving. Please be alert to symptoms of infection in your children which include sore throat, headache and fever, sometimes with a pale pink rash with a sandpapery feel to it and chest infection symptoms. Signs of severe infection include when a child has a fever which is not responding to paracetamol, when a child is drowsy or lethargic, breathing rapidly or not wanting to play as usual, if they are unable to eat or drink or if they are not passing a usual amount of urine.

**If we are closed and you are concerned, please call 111 for an assessment.**

**Bank Holidays:** The surgery will be closed on these dates 26, 27 December and 2 January. Please call 111 if you need medical help.

**The Patient Participation Group:** We are always happy to have new members to join the committee, all patients of this Practice are eligible. Please contact our chairman as below to find out more information and how you can be involved

**Regular Meetings:** Next meeting is Wednesday 25 January 2023 at 2pm. If you wish to join our Zoom meeting please email our chairman at [s.j.gilson@btinternet.com](mailto:s.j.gilson@btinternet.com) who will send you a meeting invite.



**Copy deadline for next issue is 14 January.**

*Please send material to the editor at [BottishamCresset@gmail.com](mailto:BottishamCresset@gmail.com)*

## OvenPad Cleaning Services

I will professionally & efficiently clean ovens, ranges, Agas, ceramic hobs, extractors, microwaves and BBQs.

**It's a dirty job, why not give me a call?**

Contact **Paddy Kelly** on  
Tel: 01638 742703  
Mob: 07752 631343  
Email: [info@ovenpad.com](mailto:info@ovenpad.com)  
Website: [www.ovenpad.com](http://www.ovenpad.com)

## ANDREW EVANS

01954 780 999 – 01223 864335

email: [andrew@omegaclean.co.uk](mailto:andrew@omegaclean.co.uk)  
[www.omegaclean.co.uk](http://www.omegaclean.co.uk)

- ✓ Carpet Cleaning
- ✓ Upholstery Cleaning
- ✓ Tile & Grout Cleaning
- ✓ Leather Cleaning
- ✓ Oriental Rug Cleaning
- ✓ Carpet & Fabric Protection
- ✓ Allergy Relief Treatment
- ✓ Odour Eradication
- ✓ Stain Removal
- ✓ Carpet Fitting

Family Business Since 1980



# PEST PROBLEM?

CALL DRE PEST CONTROL

01954 230708

07789 502556

- Commercial & Residential
- One - off Call Outs
- Management Contracts

Cambridge & surrounding areas  
[www.drepestcontrol.co.uk](http://www.drepestcontrol.co.uk)



# ***Bottisham Adult Learning Association (BALA)***

## **SPRING TERM COURSES**

We are looking forward to welcoming Stephen Poulter to Bottisham for two 5-week courses in the Spring Term of 2023. Stephen currently runs an on-line antiques business, and for the past five years has been delivering adult leisure courses across East Anglia both face to face and on-line for the WEA and other training organisations. Since 2010 he has given hundreds of one off talks for all sorts of community organisations including U3A, WI, Rotary, plus local history and church social groups. He has also created and taught new courses at Ravensbourne College and Kingston University.

### **STARTING ON THURSDAY 12th JANUARY 10.30am AT BOTTISHAM SPORTS AND SOCIAL CLUB - AN HISTORIC TOUR OF CAMBRIDGESHIRE FROM THE 17th TO 20th CENTURIES**

From gentlewoman Celia Fiennes accounts of her excursions in the late 17th century, via Daniel Defoe's best-selling book *Tours Through the Whole Island of Great Britain* in the 1720s, to the enormously popular 20th century *King's England Guides* of Arthur Mee, this course charts nearly 400 years of change in the landscape and settlements of the historic County of Cambridgeshire. The original observations and recommendations of travellers to this area in the past along with a wealth of period paintings, antiquarian engravings, vintage postcards and modern photographs will help reveal local myths, hidden gems, famous residents and lost properties from Cambridgeshire.

### **STARTING ON THURSDAY 23RD FEBRUARY 10.30am - STAND AND DELIVER – HIGHWAYMEN VS THE GEORGIAN JUDICIAL SYSTEM**

By 1737 Dick Turpin was England's 'Public Enemy Number One' with a string of house-breaking offences, highway robberies and a cold-blooded murder to his name. The forces of law and order seemed completely ineffectual in bringing him to justice, and it was only due to a lucky co-incidence that he was eventually tried and hanged – but for stealing horses, rather than for his exploits as a highwayman. This course will look in detail at the careers of a number of notorious highway robbers and reveal the cat and mouse games they played with the authorities who struggled to apprehend them with the very limited manpower and resources at their disposal.

All the meetings take place at Bottisham Sports and Social Club on Thursday mornings.

We do not meet at half term which will be 16th February.

The final session will be on 23rd March.

The charge for both courses is £40 for the term or £20 for one course. There is a one off £5 charge for new members. We take a break mid way through the session and ask that you bring your own tea and coffee but we provide biscuits!

We look forward to seeing you again in January. New members are always welcome.

*Helen Cole*

# **EAS** UK **Asbestos**

EAS UK Asbestos are experts in asbestos removal and are fully committed to meeting the safety needs of our clients and as a result we receive a very high percentage of our contracts simply through personal recommendation and repeat business. Working within the asbestos industry since 1990, EAS UK Asbestos work on Asbestos Removal projects, producing comprehensive survey reports and removing asbestos from homes and workplaces.

We have the experience and expertise in asbestos surveying and Asbestos removal to ensure that your home or business is a safe environment, free from asbestos exposure and contamination. Our job is to return your home or establishment to a clean and safe environment.

5% discount if you live in Bottisham and if we do a second job at the same address, we will give you a discount of 7.5%. just say Bottisham by email or phone. Excludes sample testing.

[www.easukasbestos.co.uk](http://www.easukasbestos.co.uk)

email: [office@easukasbestos.co.uk](mailto:office@easukasbestos.co.uk), Tel: 01223 902150 Newmarket office: 01638283871

SUMMIT



## **LANDSCAPES**

PAVING - DRIVEWAYS - BRICKWORK  
CARPENTRY - GROUNDWORKS



[www.landscapingpaving.co.uk](http://www.landscapingpaving.co.uk)

PHONE: 01223-929394



## *Public Transport Matters*

I have just been reading last month's article and wondering what progress has been made on the various transport problems - still no connection between the other villages and Bottisham by the No.11 Stephenson's bus. I have sent Bill Hilton the Managing Director copies of the Stagecoach timetables but only had a letter explaining the 12 route. I have mentioned it to drivers but they don't know of the previous route for the No.11. They are Essex based and having to learn about Cambridgeshire.

The question of a congestion charge to enter Cambridge at certain times is being discussed. I think most people are against the idea. I'm not sure how it would work for delivery drivers who could be in and out several times. The Mayor and the Greater Cambridgeshire partnership do have ideas about setting up a good local bus service in the future but the problems need sorting now. Do they use the local buses. We need action now not regular maps and articles in the local papers.

We are linked to the Grafton Centre and Fitzroy Street by the 12 bus for Bottisham residents and the 11 bus for people in nearby villages. Now, however, plans are being discussed to totally redevelop the area. I would miss the useful shops on Fitzroy Street and surely people working on the new buildings and future employees would appreciate somewhere to shop or eat in their lunch breaks.

The closure of Mill Road bridge is again being proposed but that means cars must use narrow side roads where most homes have no garages and owners park on the road which makes driving through that area difficult.

It is suggested that bus franchising could be a good idea but how long would it take to get it all organised - two and a half years is suggested.

Stagecoach is having problems delivering the bus services it has retained - cancelled and delayed buses. Schoolchildren left stranded at bus stops often in the dark. People are having to take time off work to do school runs. NHS workers are affected. Shortage of drivers?

Soham railway station is being well used and funding has been proposed for a new rail project in Fenland. Wisbech rail project is still on track but which option?

East West rail project is still being discussed despite opposition from the residents of homes that will be very close to the raised railway lines where freight could run at night. These villages have very few buses and wouldn't have easy access to the trains. The present and future strikes by railway workers is dreadful, causing so many problems and perhaps cancelling people's Christmas plans. I understand it is not just pay but proposed changes at stations. I would like to keep ticket offices but that is extra staff that must be paid.

I hope you have been able to enjoy Christmas despite the proposed strikes and disruption.

Stephenson's website has any cancellations for its buses listed each morning.

**Happy travelling. Take care.**

**Rail info - 08457 48 49 50**

*Paddy James*



**Copy deadline for next issue is 14 January.**

*Please send material to the editor at [BottishamCresset@gmail.com](mailto:BottishamCresset@gmail.com)*



HILTON PARK  
BARCHESTER HEALTHCARE

## Exciting changes to our care home

At Hilton Park Care Home, we believe every person should be treated as an individual, with tailored care provided in the very best surroundings. That's why our home's recent refurbishment has been designed with comfort, well-being and happiness in mind.

**We hope you'll love the changes as much as we do.**



Stylish new café, stocked with delicious home-made treats  
–the perfect place to meet family and friends.

Well-appointed hair salon for regular pamper sessions.

Restaurant-style dining rooms serving residents' favourite dishes.

Luxury spa bathroom for soothing soaks and relaxing experiences.

Choice of beautifully decorated lounges to feel comfortable in.

**Call 01223633900 to arrange a visit.  
We'd love to show you around.**

Hilton Park Care Home, Bottisham, Cambridge, CB259BX

[www.barchester.com/hiltonpark](http://www.barchester.com/hiltonpark)

## *News from Wicken Fen Nature Reserve*

**WINTER WILDLIFE** Water levels have been rising and areas of open water are great places to stop off for some tranquillity, and for wildlife watching on the reserve. The vegetation has been cut back in front of East Mere hide, so there is a good view from both East and West Mere hides across the open water there.

Rangers are currently managing the reed bed in the wider reserve, ensuring that the rotation provides the best conditions for biodiversity. You may see our fen harvester while you are on your walk as we complete this round of the rotation.

### **ARCHAEOLOGY AT WICKEN FEN – finds washing Saturday 14 January**

Community archaeology volunteers from Wicken Fen and volunteers from Cambridge Archaeology Field Group recently excavated test pits at Oily Hall near Lode, under the supervision of Oxford Archaeology East (OAE). This archaeology activity is part of our community engagement project: Footprints, made possible with the National Lottery Heritage Fund, with thanks to National Lottery players.

We'd like to invite you to come along to our finds washing activity on Saturday 14 January between 1:30-3pm, when you'll be able to talk to the archaeologists and our volunteers about the archaeology of the Wicken Fen landscape and help us wash the finds from our recent test pits at Oily Hall. There's no need to book, just call in during the session, which will take place in the Learning Centre at Wicken Fen.

**VOLUNTEER RECRUITMENT EVENT – Saturday 28 January** We'll be holding a recruitment day for a variety of roles in the Learning Centre at Wicken Fen. The volunteer opportunities include: School Visits Volunteers (midweek), Family Discovery Guides (weekends and school holidays), Visitor Experience Volunteers (weekends and school holidays) - for further information contact Chris White: [chris.white@nationaltrust.org.uk](mailto:chris.white@nationaltrust.org.uk)

**Fairs, Feasts and Festivals Volunteers (weekends)**, Wellbeing Walk Leaders (Friday morning), Outreach Talks Volunteers (daytime and/or evening) - for further information contact Julia Hammond: [julia.hammond@nationaltrust.org.uk](mailto:julia.hammond@nationaltrust.org.uk)

We're also looking for a couple of volunteer rangers (for hands-on conservation work on Mondays, and for monitoring/surveying wildlife), Visitor Welcome (indoors/outdoors) and Visitor engagement volunteers for Fen Cottage and Workshop - Contact Matthew Hudson for details: [matthew.hudson@nationaltrust.org.uk](mailto:matthew.hudson@nationaltrust.org.uk)

**\*NEW\* volunteer opportunity for young people aged 14-18 years** We'd like to recruit 10 young people to volunteer as Nature Champion volunteers to help us at bioblitz, family events, school and young people's engagement activities, and shape future opportunities for young people. This is a great opportunity to gain new skills, experience in nature conservation, and enhance your college/uni/job application. Find out more from Julia or Chris (contact details above).

**\*NEW\* volunteer opportunity for families** If you like walks in the great outdoors and connecting with nature as a family, we're looking for Family Walk Leaders to help us set up a regular (once a month) walk for families. Find out more from Julia (contact details above).

*For the latest reserve information, please visit our website  
[www.nationaltrust.org.uk/wicken-fen](http://www.nationaltrust.org.uk/wicken-fen)*

*Details of our events can be found on our website using the What's on link.*



# Are You Paying Too Much For Your Medical Insurance?

## Independent And FREE Advice

- **Switch to an alternative scheme** – If you are currently insured, switching to a competitor can mean *substantially lower rates*
- **Pre-existing conditions covered** – It is often possible to include pre-existing medical conditions currently covered by your existing provider
- **Improve your coverage** – We can frequently improve your cover whilst also lowering the cost of your premium
- **Complexities of different schemes** – In many cases, people are over insured – we can ensure you are covered with a scheme that meets your individual needs and requirements
- **Full cover for cancer treatment** – Many policies do not cover cancer in full – we are able to advise on your current level of coverage



For further information, please call Simon Lively at  
M&L Healthcare Solutions -

**FREEPHONE 0800 145 5838 or 07710 993990**

Email: [simon.lively@mlhs.co.uk](mailto:simon.lively@mlhs.co.uk)

quoting ref: The Cresset

M&L Healthcare Solutions Ltd is authorised and regulated by the Financial Conduct Authority. (FCA Reference number 943748)

## *Reasons to be Cheerful...*

**Here we go again. A new year of madness.**

- The BB in BB King stood for “Blues Boy”. His guitar was called Lucille. (Pawn Stars).
- Do you remember the old TV’s? Horizontal or vertical hold. Hit the top or side to adjust the picture.
- It is said “It’s not about the destination, but the journey”. Unless it’s a game of football of course.
- If you ignore someone in Coventry, where do you send them?
- Solar power is the way to go, but its not going to happen overnight.
- Fancy being posh this month? Leave your toilet roll on the radiator overnight.
- Have you ever wondered what Greek yoghurt is called in Greece? - Straggisto
- 18th January is Winnie the Pooh day.
- I’ve got a golden ticket. Wonka bars or cheap specs?
- Talking in the pub before Christmas. You may as well enjoy the turkey. You’ve got it all week.
- There is a factory in Lowestoft that produces 1 million identical waffles daily. (Inside the factory).
- People who use selfie sticks really need to have a long look at themselves.
- Why is it “As clean as a whistle”? Whistles are always full of dribble.
- Do you remember the film “The long, good Friday”? Now watch the sequel, The long Black Friday.
- Malleable-What a great word.
- If you tied a piece of toast to a cat’s back, butter side up. Which way would the cat land if it fell?

*Happy new year everyone Peter Rayment*



## **Need a little extra Financial Help?**

**We don't have a magic money tree, but we may be able to help!**

### **BOTTISHAM LOCAL CHARITIES**

**\*Bottisham Local Charities can offer support to people with a minimum of two years residence in the village**

**For further information or an application form contact the Clerk:**

**[bottishamlocalcharities@gmail.com](mailto:bottishamlocalcharities@gmail.com)**

**01223 813774 or 0792 042 5154**

# D.S. FREEMAN

## Painters & Decorators

- Residential & Commercial
- Interior & External
- Fully Insured
- All Aspects Undertaken

duncan@dsfreeman.co.uk

**Tel: 01223 812920**

Longmeadow

## Morgans Hairdressers

Tel: 01223 811646

### Creative styling for the family

- Creative cutting
- Hair up
- Colouring
- Colour correction
- Perming

Open: Tuesday - Saturday, Wednesday  
until: 8.00pm



10 Herschel Court, High Street,  
Bottisham, CB25 9DQ



Follow us on facebook

## E.J. DENSTON

### KITCHENS & CARPENTRY

All aspects of Carpentry & Joinery  
New Build 1st & 2nd fix carpentry  
Purpose made cupboards, wardrobes  
& Bookcases

Kitchens supplied & fitted  
Renovations & small build works



Tel: 01223 813279  
Mobile 07711 578687

## Carpentry Services

# TONY MARTIN

Over 30 years experience

*Any carpentry jobs  
undertaken — BIG or small*

Call Tony  
for a free estimate  
**Tel: 01223 812786**  
**(Bottisham)**  
**Mobile: 07767475987**

## ***Bottisham and District Gardening Club***

Having missed 2 consecutive meetings of the Club, including the AGM I was glad to be there for the October meeting when Helen Ackroyd, a NT volunteer, spoke about the History of Anglesey Abbey. As a regular visitor (3 times a week during lockdown) you think you know all about it but...

It began as an Augustinian Abbey in 1135 with monks offering basic healthcare to the local community and accommodation for travellers. There was some rebuilding in the 1200's but it was not looked after and soon fell into disrepair. With the reformation in 1536 the property was sold to John Hinds who took the rooves and much stone to rebuild his house in Madingley! It was left for 70 years and the only room to survive is the present dining room used then to house cattle. It was owned then by the family of Thomas Hobson and then the Downings and later local vicars.

Then came Urban Broughton in 1926, a very wealthy man, and the Abbey was purchased unseen at auction. It was near Newmarket to cater for his horse racing interests and there was good shooting in the Fens. Urban had built Felixstowe docks before going to America, worked for the Chairman of Standard Oil and married his orphaned daughter so he was rich enough to also buy property in Mayfair and Windsor on his return to England. (He also bought Runnymede when it came up for sale and donated it to the National Trust). He was given a title in 1929 but died before he was invested with it and chose the name of Fairhaven as it was where he first lived in America.

Anglesey Abbey as we know it today was reconstructed in the 1920's with a new entrance hall. The two sons Huddleston (who became Lord Fairhaven) and Henry both took up residence and Henry was responsible for designing the gardens as we know it. He eventually married and moved to South Walsham where he created Fairhaven Woodland and Water Gardens. Well worth visiting.

Huddleston never married, was a great collector of clocks, books, silverware and paintings and added the library and 2 art galleries in his later years to display his treasures and those he brought from his other properties. He has 45 pictures of Windsor Castle but no modern art. He was obsessed with punctuality, dinner being served at 8.03pm for example. When he died in 1966 the Abbey was offered to the National Trust. They were not too keen at first as the house did not represent a set period of history but they eventually took it on because of all its treasures he had bought over the years. There was an archaeological dig on the south lawn started in 2020 but Covid came along and it stopped. Hopefully they can come again.

Our first meeting in the New Year will be on **Tuesday 24th January when Peter Jackson**, formerly from Scotsdales, will speak about **“Shrubs for all Seasons.”**

**We meet in the Poppy Room at the Club at 7.30.**

*Sylvia Overton*

**Copy deadline for the next issue is 14 January.**

*Please send material to the editor at [BottishamCresset@gmail.com](mailto:BottishamCresset@gmail.com)*



# S. NEAL

*Carpentry and Small Works*

Offering a high quality carpentry and small works service in Bottisham and the surrounding area.

FLOORING • HANGING NEW DOORS  
KITCHEN RENOVATIONS • DECORATING •  
TILING • LANDSCAPING  
BESPOKE CARPENTRY



**07703 043243**

SNealCarpentry@Gmail.com  
@S.Nealcarpentry



## My love for dogs An alternative to Kennels

A personal, caring approach to dog care.

In our home, your dog will receive two hour-long walks every day as well as treats, socialisation with other dogs and the administration of any required treatments.

- Fully insured and police checked
- Licensed by Sth. Cambs. District Council.

For further details call Amanda on  
07903 806750

Based In Steeple Morden near Royston.



# ONG

“Successful entrepreneurs are givers and not takers of positive energy.” ANONYMOUS

**codge.com**  
**info@codge.com**  
**01449 675 548**

Design & Origination • Website Design & Maintenance • Email Marketing • Digital Publishing  
• Logo Creation • Cartoons & Illustrations • Theatrical, Product Photography & Retouching •  
Business Stationery • Promotional Flyers & Posters • Newsletters & Magazines • Programs &  
Catalogues • Books & Brochures • Calendars • Reports • Signage, Displays & Banners •  
Personal & Wedding Stationery • Mac Training





On the 17th November our meeting was held in Fassage Hall for the first time. The committee feeling this would be more economical to heat and cosier especially during the winter months. Our guest speaker for the afternoon was Diocesan President Hazel Williams. She updated on events and projects within the Diocesan, Nationwide and Worldwide. Giving feedback on the recent Diocesan Day held at Milton in October. At the time of writing Mothers' Union is currently taking part in the 16 Days of Activism Against Gender Based Violence and Abuse from 25 November to 10 December 2022.



Hazel also brought along Mothers' Union Christmas cards, greeting cards, and various other MU merchandise for members to purchase.

Our December meeting took place a week earlier than usual. A short Advent service was held, which included Wave of Prayer for our fellow members and the work they carry out in Zambia, Rwanda, India, Nigeria and our own Ely Diocese. Afterwards members showed much enthusiasm and their artistic skills in making a Christmas table decoration, which we all admired whilst sharing some Christmas cheer with tea and mince pies.

Our programme for 2023 will begin on Thursday 19th January, when we will be joining the regular Thursday morning Holy Communion Service in St. James' Church, Lode for our New Year Communion. Following the service, we will be serving a soup lunch in the church. All are welcome to join us.

Copies of our January to June programme are available in all five churches of The Anglesey Group.

*Ann Langran*

## Tutor



Experienced tutor:  
Fully qualified former primary school  
teacher and home educator based in  
Little Wilbraham

Expertise in:  
Primary  
Key Stage 3: Maths, English,  
History & Geography  
Study skills & revision techniques

For information and to arrange a free  
meeting/consultation contact:

Anne-Marie McCubbin BA(Hons) PGCE  
email: [info@wingstoflyeducation.co.uk](mailto:info@wingstoflyeducation.co.uk)  
tel: 01223 811939

## SHANE MAUREL HANDYMAN SERVICES

ALL TYPES OF DOMESTIC WORK  
UNDERTAKEN

From:

**Plumbing,  
Carpentry  
Gardening  
Electrical  
Tiling**

to

**Moving Furniture**

**I WILL DO THE  
LOT!**



Tel: 07518 644537

Email: [shapiemau@gmail.com](mailto:shapiemau@gmail.com)

## STEPWISE FOOTCARE

**Vivien Honeyborne-Martins**

MA(Cantab) BSc(Hons) MChS HPC Registered



**Clinic-based Chiropody/Podiatry**

- *Chiropody*
- *Biomechanical assessment*
- *Insoles/SIDAS bespoke orthotic therapy*
- *Children's foot problems*
- **MotionMetrix** gait analysis
- **Lunula Laser™** fungal nail treatment
- **Swift Microwave** for verrucas

## *The Burwellness Centre*

10 Ness Road, Burwell, Cambridge, CB25 0AA  
Tel: **01638 741973** [stepwise-footcare.co.uk](http://stepwise-footcare.co.uk)

## The Upholstery Barn



- Fulbourn-based upholsterer offering traditional and modern reupholstery, repairs and re-covers
- Bespoke footstools & soft furnishings

**Contact:**

Anne McGarvey  
T: 07986027807

E: [camupholsterybarn@outlook.com](mailto:camupholsterybarn@outlook.com)  
[www.theupholsterybarn.co.uk](http://www.theupholsterybarn.co.uk)

## *Bottisham Bird Brain*

How well do you know the birds that frequent your garden, your village, or your county? What I hope to do with this column is to offer a little insight into what's around, including some identification assistance, and some interesting facts and stories about the avian life of Bottisham and the surrounding area.

I don't profess to be an expert but, as a lifelong birdwatcher, I am often approached by friends who have seen a 'mystery' bird and it can be frustrating, for both parties, when some of the key information necessary for a positive identification is missing! Usually, the first thing that people notice is the colour but, as a guide to identification, the description, "small and brown" does not help much! The clues are numerous, but it is important to see, not just 'a bird', but a combination of features and behaviours that will give its name away 99 times out of 100. Of course, there is always an outside chance of a rarity turning up in your garden (someone in Oxfordshire had a 'first for the UK' in their garden in September when an American Nighthawk stopped for a rest during an ill-fated journey from North America to South America!) but, normally, we can identify a British regular by answering a few simple questions.

Key to this is to narrow it down to a family, if possible. Where was it? What time of year? What was it doing? How big was it? Were there any distinguishing marks? Leg length? Tail length? Beak size? How did it walk/hop? How did it fly? How/what did it eat? Any of these pieces of information could suggest the correct family, but any combination of answers would enable you to have a fair stab at an accurate identification and, with a bit of practice, you can put a bird's characteristics together to form an instant overall impression. And a book will always help... The Observer's Book of British Birds has been around for many decades and is a great resource for the beginner, or for anyone who needs a quick reference guide. For those who require a little more depth, The Shell Guide to the Birds of Britain and Ireland is a time-honoured, trusted friend.

Anyway, we're going to kick off (apologies for the sporty reference – old habits die hard!) with a seasonal favourite, indeed one of the nation's favourites: the beautiful, humble Robin. Who knew that the Robin was a member of the Thrush family 'Turdidae'? Admittedly, it doesn't look a lot like the more commonly-known Thrushes, having more in common with woodland birds like the Redstart than, say, the Song Thrush; but the proud, upright stance is certainly a feature of many Thrush relatives.

One important feature to look out for in garden birds is the beak. What do you notice about the Robin's bill? It's short, slim and pointed, quite delicate in fact... which tells us that it's predominantly an insect eater. It will also take earthworms, crumbs, scraps, berries, and those who deploy garden feeders may know that Robins have a real penchant for mealworms. Compare the Robin's bill with the chunkier, more powerful tool of a House Sparrow, or any of the finches, whose diet chiefly comprises seeds.

So why is the Robin so closely associated with Winter, and Christmas in particular? One thing to bear in mind is the fact that they are more



*(Continued on page 43)*

# SECURE CONTAINER STORAGE

**10ft and 20ft**

IDEAL FOR BUSINESS OR PRIVATE STORAGE.  
CONVENIENTLY LOCATED IN BOTTISHAM

**Call 07841 930065**



**Rothwell's**  
Carpet Cleaning

**01638 428 060**

**01223 832 928**

**[www.Rothwells.biz](http://www.Rothwells.biz)**

## **Carpet Cleaning**

### **Stone Floor, Upholstery & Rug Cleaning.**

*A few points that make us stand out from the others,*

Rothwell's has been in business since 1993.

We're an honest local family firm.

Our large truck mounted machines mean more cleaning  
& drying power for the best results possible.

Members of both the NCCA and TACCA.

We will move the furniture for a thorough clean.

100% satisfaction or it's FREE.

*Call Oliver and Max Campbell for expert help today.*

Rothwell's, Malting End, Kirtling, Newmarket, CB8 9HH

*(Continued from page 41)*

numerous in Winter, with the resident birds having been joined by visitors from Northern Europe escaping the worst of the seasonal weather. But the link goes back to the 1860s when the early postmen, delivering the newly fashionable Christmas greetings cards, wore red tunics, giving rise to the nickname of 'Robins' or 'Redbreasts'.

It helps, too, that Robins are widely regarded as friendly, even tame, in the UK. This is often thought to be a tribute to the British character of respecting and caring for wildlife and that may well be true, given that a number of less-enlightened countries in Southern Europe still regard the massacre of song birds as 'sport'. But I like to think of the Robin as bold rather than tame. The fact is that they possess a fearlessness, unrivalled by most other Passerines (small, perching birds), which not only results in a tendency to 'befriend' a gardener who might turn up a tasty morsel or two from the ground, but in fierce battles with rival birds over a precious territory, which can result in serious injury or death to the defeated.

By the way, how do you tell male from female? Well, you can't, because the sexes are alike, unless perhaps you're willing to spend hours watch a courtship in which the female usually takes the lead. Pairing up will begin as early as late December and the female will expect to be fed by the cock bird during their courtship, once he's succumbed to her advances! And he will sing his heart out in early Spring, with a joyful, fluid medley of notes usually delivered from a perch, sometimes even at night by the light of a streetlamp. Romantic, eh?!

So, there's a lot to admire about this plucky, perky bird. In 1961, the British Section of the International Council for Bird Preservation decided set about choosing Britain's national bird. Extensive correspondence was conducted in the pages of The Times and the title was duly bestowed on our beloved Robin.

*TTFN - Gerry Daish*

The north wind doth blow, and we shall have snow, and what will the  
Robin do then, poor thing?

He'll sit in a barn, and keep himself warm, and hide his head under his  
wing, poor thing - 16th Century Nursery Rhyme

## **BOTTISHAM CARPET BOWLS CLUB**

**AT BOTTISHAM VILLAGE COLLEGE**

**HENRY MORRIS LECTURE ROOM - Enter via main Reception**

Term times only

**Club Night Wednesday 7.15pm - Thursdays League Matches**

**4 weeks free trial**

Carpet bowls is suitable for all ages and all equipment is provided by the club.

We are a friendly group and new members are always welcome,

so please come along and try your hand

Further details from:

**Nora Watson - 01223 812121 (email:-nora@gandnwatson.uk)**

**Richard Nichols- 01223 812158 (email:-rlla.bell@btinternet.com)**

If interested please contact us

## Adult Learning

Are you interested in learning something new?

Our full range of courses for the Spring term is now available and you can book a course at any time by visiting our website.

[www.bottishamvc.org/adultlearning](http://www.bottishamvc.org/adultlearning)

Astronomy / Calligraphy / Dressmaking / Pottery and Ceramics (Fully Booked)  
 Indian Cookery/Italian Cookery / Introduction to Counselling / Tai Chi for Relaxation / Yoga

### New Daytime Courses Include

Art History / Felt Making / Drawing Techniques

Tel: 01223 811372 email: [adultlearning@bottishamvc.org](mailto:adultlearning@bottishamvc.org)

Centre open Monday to Wednesday 8.30am – 2.30pm, Thursday 8.30am– 1.00pm

Facebook: [BottishamAdultCommunityLearning](https://www.facebook.com/BottishamAdultCommunityLearning) or Twitter: [@CommunityEdBott](https://twitter.com/CommunityEdBott)

0%  
FINANCE AVAILABLE

## How will your fence look after another UK Winter?



**Install a ColourFence before the Spring and you'll be maintenance-free until 2048!**

**PREVENTION IS ALWAYS BETTER THAN CURE.**

The moment a fence falls or breaks, you have to deal with third party damage, security and privacy issues, neighbour quotes, the expense and inconvenience - all at once. Alternatively, a simple call to ColourFence can head off all your problems for the next 25 years! Virtually maintenance-free, before the Spring growing season starts, now is the best time to see our great value, colours & designs. Free phone today.

*The product is just what we were looking for and wish we had discovered it years ago. No more annual painting or waking up to fallen panels! We are very pleased with our new fence.*

Mr & Mrs Green, Sandy

- Guaranteed\* not to warp, crack, shrink, rot or peel
- Withstands wind gusts of up to 130mph
- Saves maintenance, time and money – no annual treatment required
- Guaranteed to look good for up to 25 years\*
- Unbeatable value compared to other fences
- Create your look with a choice of designs and sizes in four colours
- No risk professional installation
- 0% Finance Available



Brown

Cream

Green

Blue

For a free, no-obligation quote, find out more via:

**01223 811 160**

[colourfencecambs.co.uk](http://colourfencecambs.co.uk)





**Touse our wide choice of sizes, colours and designs – contact us today!**

Hose down several times a year. Terms & conditions apply. \*FreeFencing Ltd is a manufacturer appointed representative of Ideal Sales Solutions Ltd (a specialist fence, gate & door solutions company). Finance available subject to status. The rate offered is always provisional and will depend upon your personal circumstances, the loan amount and term.







Have you ever stopped of a morning to sit down to have a cup of coffee in the house on your own, and thought it would be nice to talk to somebody?  
Well you can and very easily too. Come along to Meeting point on a Wednesday and have that cup of coffee with like-minded company



## in the Poppy Room at the Bottisham Community Sports and Social Club

A place where you can meet old friends make new friends, relax, chat and enjoy coffee, cake and biscuits in a friendly relaxed atmosphere.

**EVERYONE WELCOME**  
**ADMISSION FREE**

## *East Anglian Air Ambulance*



It is highly unlikely that anyone across East Anglia has not heard, or heard of, EAAA and the wonderful work it undertakes. The scale of the operation – two state-of-the-art + - HS145 helicopters plus rapid response vehicles means that a substantial bank account is required to meet costs. What are the costs you might ask – well, about £3,750 a mission on average which currently translates to around £17m this year!

We receive an astounding level of active and passive support from young and, not so, young alike. We need more – please.

If you have an idea by which money for EAAA can be raised please get in touch.

Quiz's, walks, rambles, scrambles! climbs, orienteering, collections (at parties or at work, anything – the list doesn't stop there. It's fun too.

This year our Trek24 raised over £88k, Only the Brave over £83k and the 'Together We' series a further £74k plus – please do get in touch\*

Email: [info@eaaa.org.uk](mailto:info@eaaa.org.uk) to find out how you can join the teams or do your own thing. Remember, we run a weekly regional lottery and an accumulator – up to £25k prize money. 2023 EAAA pocket diaries are still available for new lottery players and their introducers!

\*also, to find out about 'gifts in wills' – an increasingly important component of our overall income.

Another 'New Year's Resolution? So, what's stopping you? Please help East Anglian Air Ambulance to save more lives.

*Michael White*

Copy deadline for next issue is 14 January.

Please send material to the editor at [BottishamCresset@gmail.com](mailto:BottishamCresset@gmail.com)

# ARCHITECTURAL DRAWINGS

FOR

PLANNING & BUILDING REGULATION APPLICATIONS

NEW PROPERTIES, EXTENSIONS, LOFT CONVERSIONS ETC

CONTACT US now to arrange a FREE on-site meeting at your convenience to discuss your project.

## ELY DESIGN GROUP

*'Architecture by Professionals'*

[www.elydesigngroup.co.uk](http://www.elydesigngroup.co.uk)

01353 649649

[mail@elydesigngroup.co.uk](mailto:mail@elydesigngroup.co.uk)

# Lloyds Gardens

## Friendly Affordable Reliable Gardening Service

- All aspects of tree surgery
- Stump grinding
- Root ball removal
- Tree houses
- Garden Structures
- Bespoke clay pizza ovens

FULLY ACCREDITED AND INSURED

ALL WORK CARRIED OUT TO BS 3998 STANDARD  
MANY HAPPY REFERENCES AVAILABLE ON REQUEST

Tel: 01638 744140

Mob: 07811 132709

[WWW.LLOYDSGARDENS.ME.UK](http://WWW.LLOYDSGARDENS.ME.UK)







# DRAIN-PLUMB

*Plumbing, Heating & Drain  
Services*

## **BLOCKED DRAINS CLEARED**

- Gas Boiler Service & Maintenance
- Power Flushing of Boilers & Heating Systems
- Home Buyers CCTV Drain & Plumbing Surveys
- All Plumbing & Heating Repairs/Alterations
- All work Guaranteed

TEL: 01638 742873  
MOB: 07932 773515

7 NESS ROAD,  
BURWELL  
CAMBRIDGE, CB25 0AA

## **TV AERIALS**

## **SATELLITE**

## **DIGITAL FREEVIEW**

**Installations  
Extra points etc.  
Tuning in of TVs, Digiboxes etc.**

**Experienced local engineer  
RICHARD FORTEY  
01638 662119**

**No Call Out Charge**

## DB Electrical & Building Services

Dale Badcock  
07718 122538

dbelectricalandbuilding@gmail.com

All domestic work undertaken

- Rewiring
- Lighting
- Burglar alarms
- Security Lighting
- Lighting design
- Controls specialist
- Renovations
- Alterations
- Kitchens & Bathrooms

91 Northfield Park  
Soham  
CB7 5XA

01353 720570

www.DBElectricalandbuilding.co.uk



*Rebecca Golding*  
now has her new salon  
in Burwell

Tues  
9.30am-8pm

Thurs  
9.30am-8pm



30 Years'  
Experience  
All aspects of  
Hairdressing

*Tel. 07742 997474*

*Free Parking at  
67 Silver Street  
Burwell, CB25 0EF*



## TIM PHILLIPS & Co. Accountants

Independent, specialist service for:  
**Small Business • Self Assessment  
Personal Taxation**

Free initial consultation – no obligation  
**EASY, FREE PARKING**

Copley Hill Business Park, Cambridge Rd., Babraham  
Off A1307 between Wandlebury and Babraham

**Tel: 01223 830044. www.tpaccounts.co.uk**

## *Ukrainian Family Update*

Last weekend we helped our lovely family, fleeing the war in Ukraine, to move into their own rented home in Great Wilbraham. At the time there was no suitable, affordable property in Bottisham and this is the village where 5 yr. old Lev attends school. Of course, it would have been wonderful to keep them close to us in Bottisham but Lev can now walk to school and spend time afterwards at the playground in Gt Wilbraham. Today he told me about his school trip to the Polar Museum in Cambridge and I am typing this as I have collected him and his mum and taken to his weekly Judo lesson at BVC which he loves. We are so happy he is involved in these sorts of activities. He continues to enjoy weekly swimming sessions, cost covered by a very kind village friend, and football training on Saturday morning, again a kind offer makes this happen.

Of course, moving into a different village with almost non-existent buses (one 7am., ish to Cambridge and one back at 6.30pm) causes more difficulties. Grandmother, Nika, needs to attend English lessons twice weekly 2-4pm in centre of Cambridge and needs to get to work 3 days a week at Anglesey Abbey. Thanks to kind offers of lifts from Wilbraham residents they are managing on a transport rota at present. Olena continues to have online English lessons as she remains at home to care for 4 month old Max who is a chubby, happy baby. Thankfully he recovered fully from Covid a few weeks ago after a rush to hospital and a night in isolation. Not something Mum wishes to repeat! Her aim is to be able to work from home managing her time around baby-care.

We continue to support them emotionally and in a very practical sense, anyone who knows Ron knows that there is not much he cannot fix, build, fit or design to make life easier. Thankfully we have vehicles for transporting large items of furniture (eg double bed) and also dry storage available for items not needed at present. We have had teething problems with quite old storage radiators. These appear to be unknown and some hilarious conversations have arisen about their usage and purpose. Hopefully all will be working smoothly very soon (although goodness knows what the energy bills will be!) It's hard for everyone at present to cope with the rising cost of living.

We are now waiting to see if Lev's daddy, Andrii, will be allowed to leave Ukraine to join his wife and see his son for the first time in around six months and hold baby Max in his arms. We will sponsor him as this is what happens under the Homes for Ukraine scheme. What a Christmas gift that would be if he arrived in the next few weeks!

Once again Ron and I would like to use this communication to thank everyone who has supported us either with words, donations, actions etc. We are very grateful and so are Olena and Nika.

The small house is mostly furnished now but if anyone reading this has a small table/desk suitable for Lev to sit at to do his homework/daw/write please let us know. We have been given one for his bedroom but another one in the corner of the living room would be brilliant.

Thank you all

*Wendy and Ron Haynes, Olena, Lev, Max and Nika*



# J&J DRAKE



## Fully approved electrical contractor

- All Work Certificated in Accordance with NICEIC
- Free no obligation quotations
- All aspects of electrical work undertaken such as re-wires, Periodic test and inspections, maintenance calls, New build Installations.
- However small you may consider your job it will be treated with the same attention to detail as every one of our jobs.

## Your Local Electrician

Unit 24, Hall Barn Road Industrial Estate, Isleham, Ely, Cambs. CB7 5RJ  
Contact us on: 01638 781567 / enquiries@jandjdrake.co.uk



From  
**£895\***

for a fully  
fitted electric  
garage door.

Gotta get a Garolla.



Garolla garage doors are expertly made to measure in our own UK factories, they're strong and solidly built. The electric Garolla door rolls up vertically, taking up only 8 inches inside your garage, maximising valuable space. Our expert local installers will fit your new door and they'll take away the old one too, so there's no mess.

Give us a call today and we'll come and measure up FREE of charge.

**GAROLLA**  
ROLLER  
SHUTTER  
DOORS 

[www.garolla.co.uk](http://www.garolla.co.uk)

CALL US TODAY ON:  
**01223 902 011**  
MOBILE:  
**07537 149 128**

LINES OPEN 7 DAYS A WEEK

\*Offer valid for openings up to 2.4m wide & including 2 remote controls, 55mm white slats, internal manual

# *Cambridge, Past, Present & Future*

*- A colourful month of activities*



**Winter Tree Walk.** - Wandlebury Country Park - Wed 11 January, 10am – 12noon FREE guided walk to learn how to identify tree species in winter. Learn how to identify our native trees using bark, buds, shape and form (and leaves / seeds when available!). Gentle guided walk around Wandlebury. Meet at the noticeboard in the car park. Free but donations welcome.

**Woodland & Wildlife Walk** - Wandlebury Country Park - Wed 25 January, 10am – 12noon FREE guided walk to learn about woods and their wildlife. Join our Wardens for a gentle guided walk to learn about and enjoy the woods and their wonderful wildlife. Meet at the noticeboard in the car park. Free but donations welcome.

## *Red2Green News - [www.red2green.org](http://www.red2green.org)*

As we pack the Christmas decs away and get stuck into a new term, we thought we'd list a few things we are looking forward to at Red2Green this year:

### **GETTING INVOLVED IN THE KING'S CORONATION.**

We were really excited to receive an email from the Bottisham Inaugural Group talking about plans for a village-wide coronation celebration. We love a good reason for a party and can't wait to support the village however we can. We are sure to have clients across our Bottisham and Swaffham Bulbeck sites who want to get involved, making wreaths, decorations and/or whatever else the village needs.

### **SEEING OUR CLIENTS GROW!**

Last year we introduced AQA Unit Award Scheme certificates into our services. These offer small steps on the development pathway, and you can receive an official certificate from an examination board in everything from cooking and food hygiene, maths, English, IT skills, CV writing, sports, and more. Over half of our clients are now earning certificates through this scheme and some will go on to use them to find further education and employment. We couldn't be prouder of them all.

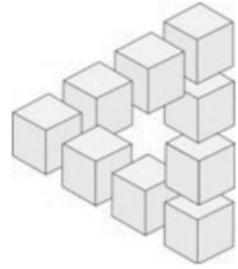
### **SUMMER FETES AND CAR BOOTS.**

We are already wishfully thinking of the warm weather again and are looking forward to bumping elbows with our local communities again. We are hoping to have an action-packed summer attending local fetes and markets to sell our plants and home-made items, but we need weekend volunteers to do this! If you or anyone you know is interested in volunteering with us this year, please do let us know at [info@red2green.org](mailto:info@red2green.org)

**Copy deadline for the next issue is 14 January.**

*Please send material to the editor at [BottishamCresset@gmail.com](mailto:BottishamCresset@gmail.com)*





## INDEPENDENT FINANCIAL SOLUTIONS

You know that the State Pension is not enough, but you don't know what it will provide!

You want to save for your retirement, but you don't know what you will need!

You wish to protect your family against financial disaster, but don't know what cover you require!

You need to make your money work hard, but don't know which option is best for you!

You would like to reduce your tax bill, but you don't know how!

.....  
**Whether you own a company, are self employed, employed or retired, we can help!**

**We don't believe in adding to your problems.**

**We believe in clear and simple solutions.**

Let us provide you with an **INDEPENDENT**  
review of your financial situation.

**The value of investments and income from them may go down.  
You may not get back the original amount invested.**

*Tax treatment is based on individual circumstances  
and may be subject to change in the future*

**Tel: 01638 615343 or Fax: 01638 615342**  
**E-Mail: [qc@independent-financialsolutions.co.uk](mailto:qc@independent-financialsolutions.co.uk)**  
**Website: [www.independent-financialsolutions.co.uk](http://www.independent-financialsolutions.co.uk)**

Newnham Farmhouse, 16 Low Road, Burwell, Cambs, CB25 0EJ  
Partners: Quentin Cooke (authorised Independent Financial Adviser) & Alison Cooke



# My Village Handyman Services Ltd

- DIY Repairs & Odd Jobs
- Painting & Decorating
- Tiling & Flooring
- Gardening & Landscaping
- Patios & Decking
- Fencing, Sheds + Garden Studios
- Kitchen & Bathroom Installation
- Gutter Clear and Jet Washing
- Leaking Taps & Plumbing Jobs
- Carpentry & Repairs
- Light Fittings, Sockets & Electrical Works
- Studio & Summer House Builds
- Brickwork & Small Builds
- New Doors or Locks
- Security & Garden Lighting



**If your job is not listed, get in touch I'm sure we can help**  
Free no obligation quotes and advice provided  
Your very local Handyman

Contact us to arrange a visit or quote

Call: **07500876376** or **01223 881700**

Email: [info@myvillagehandyman.com](mailto:info@myvillagehandyman.com) Web: [myvillagehandyman.com](http://myvillagehandyman.com)

# K.J.P.

## Building/Maintenance



Including:

Design, landscapes, patios, fencing,  
gardening, decking, painting,  
decorating, tiling, all interior work,  
etc.

Tel: 01223 812021 or  
mobile 07799 504043



## SANICLEAN

DRAIN & PLUMBING SERVICES

**R. BRISTLEY** Est. 1974

9 Collings Place, Newmarket

- *Drains Unblocked Fast*
- *Toilets, Baths and Sinks*
- *Guttering and Downpipes*
- *Drain repairs and CCTV Surveys*
- *High Pressure Water Jetting*
- *Domestic and industrial*
- *All Work Guaranteed*

Newmarket (01638) 662439

Mobile 07970 038404

[www.rbristley.co.uk](http://www.rbristley.co.uk)

**FREE  
Estimates &  
Advice**



BRADSTONE

- All Driveways & Block Paving
- Site & Garden Clearance
- Driveway Cleaning & Sealing
- Fencing, Trellis Work & Decking
- Patios & Paths
- Turfing & Seeding
- Concrete Crushing
- Grab Hire & Digger Hire

[amsbuildingandlandscaping.co.uk](http://amsbuildingandlandscaping.co.uk)

**OFFICE: 01638 721 893 | SITE: 07789 261 266**



# Rayment's

• Vehicle Servicing & Repairs •

## Diagnostic Specialist

MOTs | Servicing | Tyres

Cambelts | Brakes | Air Con

8 Townsend, Soham, Ely, CB7 5DB

# 01353 655136

[raymentsvehiclerepairs@outlook.com](mailto:raymentsvehiclerepairs@outlook.com)

[www.raymentsvehiclerepairs.co.uk](http://www.raymentsvehiclerepairs.co.uk)

# HARRISONS OF BURWELL LTD

**Plumbing and Heating**

*FREE ESTIMATES GIVEN*

Gas Boiler Servicing

**Clarence House, 7 Ness Road, Burwell, Cambs CB25 0AA**  
**Telephone: Newmarket 01638 742873 - Mobile 07932 773515**

**email: [harrisonsofburwell@gmail.com](mailto:harrisonsofburwell@gmail.com)**

Gas Safe Registered

# HAYDEN

**THE CLEANING SPECIALIST**

Merrywood  
8 Lode Rd. Bottisham CB25 9DJ  
01223 813766 or 07919561665  
Email: [hayden.woodruff@btinternet.com](mailto:hayden.woodruff@btinternet.com)

WOULD YOU LIKE YOUR CARPETS  
OR UPHOLSTERY CLEANED?

HAYDEN IS LOCAL TO THE AREA,  
OFFERING FREE QUOTATIONS  
AND ADVICE

WE ALSO CLEAN WINDOWS WITH  
OUR NEW REACH AND WASH  
SYSTEM OR TRADITIONAL, YOUR  
CHOICE

## k-domestic electrical solutions



Complete installations & rewires

Small and large alterations

Lighting

Internal & External work

PAT testing

Periodic Inspection & Reports

Full Inspection, Testing,  
Verification & Certificate issue

LED

Under Floor Heating

Voltage Optimization

your **local** electrical service of choice and recommendation

**Karl Howe**

**01638 610438 M: 07541 008613**

Email: [enquire@k-elecsolutions.com](mailto:enquire@k-elecsolutions.com) Website: [www.k-elecsolutions.com](http://www.k-elecsolutions.com)

Fully qualified Part P and 17th Edition

**City &  
Guilds**  
Qualified





The Christmas decorations have been stored away for another year, and as we say goodbye 2022, we are planning many new and exciting things for 2023. Winter Lights 2022 was bigger and better, and we had such fun welcoming visitors new and old to see the stunning light displays. Now that the festivities are over, winter in the garden remains one of the most spectacular seasons we see.

The Winter Garden is the perfect place to walk off Christmas dinners and take in the vibrant colours and fragrances this area of the garden has to offer. This is also when we begin to see small green snowdrop shoots peak out of the soil. The best Snowdrop displays tend to pop out towards the end of January to mid-February, depending on the weather. This year you can get up close to our special collection of over 400 varieties of snowdrops by booking yourself onto a Snowdrops: The Specialist Collection tour. These are available for pre-booking on our website and is a wonderful way to help support the work the team do to research and care for this collection.

The House will be closed in January for annual conservation work. We will be running 'Behind the Scenes' tours on Tuesdays and Wednesday throughout January to give visitors a glimpse of the action. Head to our website to pre-book your ticket.

[www.nationaltrust.org.uk/visit/cambridgeshire/anglesey-abbey-gardens-and-lode-mill](http://www.nationaltrust.org.uk/visit/cambridgeshire/anglesey-abbey-gardens-and-lode-mill)

# Bottisham Vehicle Services Ltd.

Reliable, Friendly, Professional

Service and repairs to all makes,

MOT testing, tyres, air conditioning

Courtesy car available

Local collection and delivery

10 Tunbridge Lane, Bottisham, Cambridge CB25 9DU

01223 811919 • [simon@bvsltd.net](mailto:simon@bvsltd.net) • [www.bvsltd.net](http://www.bvsltd.net)

# *'Your Friendly, Local Wood Burning Stove Specialist'*



## VISIT OUR SHOWROOM!

**Whitelands Farm  
Newmarket Road  
Bottisham  
Cambridge  
CB25 9BD**

**Mon – Closed  
Tues – 12.30 – 14.30\*  
Wed - Appointment Only  
Thurs – 12.30 – 14.30\*  
Fri - Closed  
Sat – Appointment Only  
Sun – Closed  
(\*School holidays by  
appointment only)**

**- Email & telephone enquiries  
dealt with Monday – Friday  
09.00am – 5.00pm  
 01223 703184**

Email: [sarah@cambridgestoves.co.uk](mailto:sarah@cambridgestoves.co.uk)

[www.cambridgestoves.co.uk](http://www.cambridgestoves.co.uk)

CALL NOW FOR YOUR FREE, NO  
OBLIGATION SURVEY AND  
QUOTATION, OR MAKE AN  
APPOINTMENT TO VISIT OUR  
SHOWROOM

ALL ASPECTS OF BUILDING WORKS TO  
YOUR FIREPLACE UNDERTAKEN

FAST, RELIABLE AND EFFICIENT  
SERVICE CARRIED OUT BY QUALIFIED  
HETAS ENGINEERS

LARGE SELECTION OF WOOD  
BURNING STOVES ON DISPLAY



# MOBILITY EQUIPMENT

**STAIRLIFTS, SCOOTERS, WHEELCHAIRS, RISING CHAIRS AND  
BEDS, WALKERS, TOILET & BATHING AIDS, KITCHEN &  
HOUSEHOLD AIDS, CONTINENCE CARE, FOOTWEAR**

**SPARES, SERVICE, HIRE OF EQUIPMENT  
HOME VISITS AVAILABLE  
FRIENDLY AND CONSIDERATE SERVICE GUARANTEED**



**SCOTSDALES GARDEN CENTRE  
HORNINGSEA  
CB25 9JG  
01223 863908  
[www.orchard-mobility.co.uk](http://www.orchard-mobility.co.uk)**

**Monday to Saturday 9.00 – 5.00**

## **Bottisham Parish Council**

### **CHAIR**

JON OGBORN 3 Woodward Drive 07486 372780

### **VICE CHAIR**

JOHN WILSON 76-78 High Street 07850 332169

### **PARISH COUNCILLORS**

JOHN AUSTIN 183 High Street 01223 813151  
HILDA BUCHANAN 55 Beechwood Avenue 811689  
NADENE CUNDELL 48 High Street 07733 102859  
LINO DI LORENZO 15 Peacock Drive 813420  
STEVEN O'DELL 23 Downing Close 07881 775499  
MARK OVERTON 49 High St. mark.overton@bottisham-pc.gov.uk  
J. SWAMINATHAN 2 Woodward Drive 07990 536992  
LAURIE VAN SOMEREN 123 High Street 811679  
NEIL WINKCUP 07385 367985

### **DISTRICT COUNCILLORS**

CHARLOTTE CANE 34 Swaffham Road, Reach 07976 607512  
Charlotte.cane@eastcambs.gov.uk  
JOHN TRAPP 104 Commercial End, Swaffham 812120  
Bulbeck john.trapp@eastcambs.gov.uk

### **COUNTY COUNCILLOR**

ALAN SHARP 11 High Street, Stetchworth CB8 9TH  
Tel.01638 507485 Mob.07794 292941  
alansharp730@btinternet.com

### **PARISH CLERK**

ALICE BETTONEY 7 West Walk 07774 490607  
clerk@bottisham-pc.gov.uk

## **BOTTISHAM COMMUNITY LIBRARY ASSOCIATION**

### **LIBRARY OPENING HOURS**

#### **TUESDAYS**

3.00-5.00 and 6.00 - 8.00

#### **WEDNESDAYS**

10.00-11.30

#### **THURSDAYS**

3.00-5.00

#### **FRIDAYS**

6.00-8.00

#### **SATURDAYS**

10.00-12.00am

*Working in Partnership with the  
County Library Service.*

## Useful Information

<b>Bottisham Website:</b> .....	www.bottisham-pc.gov.uk
<b>Holy Trinity Church:</b> Revd Sue Giles .....	812726
Stuart Field, Churchwarden .....	01223 604019
<b>Roman Catholic Priest:</b> Monsignor Eugène Harkness. Parish of St Philip Howard .....	01223 211235
<b>RE:NEW/Lode Chapel:</b> Rev. Alan Brand .....	01223 812558
<b>Bottisham Surgery:</b> .....	
Enquiries and Appointments .....	810030
Out of Hours only - Urgentcare Cambridge .....	111
<b>Bottisham Library:</b> .....	812354
Library hours: Monday Closed; Tuesday 3-5pm and 6-8pm; Wednesday 10am-12.00noon Thursday 3-5pm; Friday 6-8pm; Saturday 10am-11.30am	
<b>Cambridgeshire Police HQ:</b> .....	01480 456111
<b>Cambridgeshire Police:</b> .....	(NON-URGENT MATTERS) ring 101 - In EMERGENCIES ring 999
Local East Cambs Policing info. www.cambs.police.uk/Neighbourhood-Policing/East-Cambs	
<b>1st Bottisham Rainbows/1st Bottisham Brownies:</b> Kay Pearce .....	811055
<b>Bottisham &amp; District Gardening Club:</b> Secretary: Julia Green .....	811467
<b>Bottisham Bowling Club:</b> Peter Clowes, Secretary .....	811565
<b>Bottisham Carpet Bowls Club:</b> Nora Watson .....	nora@gandnwatson.uk - 812121
<b>Bottisham Community Primary School:</b> .....	811235
<b>Bottisham Cricket Club:</b> Chairman: Will Allen .....	Chairman@bottlodecricket.co.uk - 07713 007757
<b>Bottisham Local Charities Trustees:</b> secretary - Jonathan Barrett .....	07920 425154
<b>Bottisham Pharmacy:</b> .....	812321
<b>Bottisham Pool Association:</b> Manager - Harry Bubb .....	811121
<b>Bottisham Royal British Legion Branch:</b> Secretary. Peter Walker .....	811402
Branch Chairman: Dave Frost .....	www.Britishlegion.org.uk/branches/bottisham
<b>Bottisham Scout Group:</b> Group Contact: Linda Jones .....	813040
<b>Bottisham Community Sports and Social Club:</b> Secretary Bev Clowes, Bottishamcsasc@gmail.com .....	812063
<b>Bottisham Village College, School:</b> .....	811250
Evening Classes, Clubs and Youth Club Information .....	811372
<b>Bottisham W.I.:</b> Secretary - Jenn White • mrandjw@btinternet.com .....	811600
<b>Bottisham Youth Football Club:</b> Adam Bridgland .....	adambridgland@hotmail.com - 07764 488599
<b>Cambridgeshire County Councillor:</b> Alan Sharp .....	01638 507485/07794292941
Alan.sharp@cambridgeshire.gov.uk	
<b>East Cambridgeshire District Offices:</b> .....	01353 665555
<b>East Cambridgeshire District Councillors:</b> Charlotte Cane 34 Swaffham Road, Reach .....	07976 607512
John Trapp 104 Commercial End, Swaffham Bulbeck .....	01223 812120
<b>Girlguiding Bottisham District:</b> Cambs East County office • www.cambseastguides.org.uk .....	01223 813917
<b>Parish Council Chairman:</b> Jon Ogborn .....	07486 372780
<b>Parish Council Clerk:</b> Alice Bettoney, 7 West Walk • clerk@bottisham-pc.gov.uk .....	07774 490607
<b>Queen's Court Day Centre:</b> .....	811905
<b>MP for Cambs South East Constituency:</b> Lucy Frazer, House of Commons, London SW1A 0AA .....	
E. lucy.frazer.mp@parliament.uk W. www.lucyfrazer.org.uk	
<b>Cambridgeshire Trading Standards Helpdesk:</b> .....	0845 3030666
<b>Milton Road Tip:</b> Apr to Sept - Weekdays 9.00am-8.00pm; Weekends 9.00am-6.00pm .....	860674
Oct to Mar - 9.00am-4.00pm	
<b>CRESSET Editor:</b> .....	email: BottishamCresset@gmail.com
<b>Treasurer, Advertising rates and payment:</b> Rhona Walker, 94 High Street, Bottisham .....	811402
<b>Distribution:</b> Ian & Helen Cole .....	812573
<b>Design/Artwork:</b> ONG (Old Newton Graphics) • www.codge.com .....	01449 675548

**The Cresset:** While every effort is made to ensure accuracy we cannot accept liability for any mistakes or misprints. The views of, or any opinions expressed, are **not** those of the EDITOR. The Editor cannot accept any responsibility for statements made in advertisements.

# MANCHETTS

Car Truck & Van Centre



# Van Hire from £49

**01638 661113**

***www.manchetts.co.uk***

*1 Victoria Way Studlands Industrial Estate Newmarket Suffolk CB8 7SH*

# E.C. AUTOCARE

(Est. 1980)



**SERVICING & REPAIRS**  
**Cars & Light Commercial**  
**Diesel & Petrol**



## MOT TESTING STATION

**Servicing to all makes of Cars  
& Light Commercial**

- ENGINE MANAGEMENT DIAGNOSTICS**
- TYRE - BRAKES - EXHAUSTS**
- AIR CONDITIONING SERVICING**
- GEARBOX SPECIALISTS** MANUAL & AUTOMATIC

**FAST, FRIENDLY, FAMILY BUSINESS**

**56 HIGH STREET, BOTTISHAM**

Also at

**A1303 SERVICE STATION, BOTTISHAM**  
**(behind Brian McKay)**

**Tel.01223 811122 or 01223 812357**

